



Whole Tree Chipper Catalog



Bandit

INDUSTRIES, INC.

- Disc-Style Whole Tree Chippers
- Drum-Style Whole Tree Chippers
- Track Whole Tree Chippers

Why Buy a Bandit Whole Tree Chipper?

Production, Production, Production.

You will be amazed at how productive your operation can be with a Bandit whole tree chipper. Whether you need to produce five or fifty loads a day, we have a unit that will meet your expectations. Our product line allows you to choose from a wide range of chippers that will produce 45 tons of chips an hour all the way up to 150 tons of chips per hour. Our efficient chipping action will allow your operation to produce more tons of material per hour using less fuel.

Powerful Feed Systems

All Bandit whole tree chippers feature heavy-duty chain driven feed systems that efficiently pull and compress material into the chipper. Most of the larger whole tree chippers feature two top feed wheels, and two vertical side feed wheels. Customers who are using these feed systems agree that they are the best systems ever developed for a whole tree chipper. This set up, along with large hydraulic motors; make chipping large diameter, limby material simple and quick. Operators do not have to struggle trying to force the material into the chipper. Infeed conveyors can be equipped on all Bandit whole tree chippers. These long infeed conveyors with heavy-duty track style conveyor chain, simplify the feeding of limby material, shorter pieces, and piles of brush.

Chip Throwing Power

Powerful fixed and swivel discharge systems fully load end opening trailers to their maximum capacity. Bandit drum-style chippers feature fixed discharge systems that significantly enhance chip velocity. These chippers are known to load vans to their maximum capacity. A 270-degree hydraulic swivel discharge is standard on the disc-style chippers and can be ordered as an option on the drum-style chippers if you prefer a swivel discharge for spotting numerous vans.

Heavy-Duty Construction

As with all Bandit equipment, our whole tree chippers are constructed with heavy-duty steel and high quality components. What does this mean for you? This means that when you buy a Bandit, it will last! Bandit chippers are known for their durability, providing years of dependable service with limited downtime. There are numerous Bandit whole tree chippers in the field today that are still running with well over 10,000 hours on them. With a Bandit chipper, your maintenance costs will be drastically reduced, enhancing your operation's productivity, making you more profitable.

We realize that an important part of a chipper is the drum or disc, which is why we make these components extremely durable. Our larger whole tree drum-style chippers are reinforced with internal baffles and feature 1" thick steel drum skin for added durability. These drums will hold up and will not come apart. Bandit offers a 5 year "GUTS" warranty on the disc or drum.



Bandit Industries, Inc.

CORPORATE HEADQUARTERS:
6750 Millbrook Road
Remus, MI 49340

Phone: 1-989-561-2270
Fax: 1-989-561-2273
Toll Free: 1-800-952-0178

sales@banditchippers.com
<http://www.banditchippers.com>

TABLE OF CONTENTS

THANK YOU FOR YOUR INTEREST IN BANDIT PRODUCTS.

Bandit Industries, Inc. manufactures an array of whole tree chippers designed to excel at chipping large diameter material using less horsepower and fuel. Most of these units are being used for a variety of biomass operations converting whole trees, tops, and diseased wood into chips for fuel. They are also an excellent choice for land clearing operations, right-of-way clearing contractors, loggers, and tree services.

With a Bandit whole tree chipper, the cost to produce chips is much lower than with competitive chippers. These proven machines will make your operation more profitable by reducing trimming, fuel, maintenance and transportation costs.

Please take a moment to explore all that our equipment has to offer. Bandit has over 170 dealer locations worldwide. You can be sure that our dealers are highly trained in servicing Bandit equipment. Should you need assistance in locating the nearest Bandit dealer, feel free to contact us at any time. You can also visit our web site at www.banditchippers.com for daily updates on used equipment, customer service, or to view our entire product line video library.

*For detailed information on any model,
please contact Bandit Industries, Inc. or your local
Bandit dealer for a specific product brochure.*

DISC-STYLE WHOLE TREE CHIPPERS

The chipping angle of a disc-style chipper is approximately 45°. This angle allows the material to be chipped with the grain of the wood, creating less vibration and consuming less energy.

PAGE
4

DRUM-STYLE WHOLE TREE CHIPPERS

Drum-style chippers have larger openings with feed systems more closely coupled to the chipper. They collapse limbs easier, and chip more material at one time.

PAGE
8

SELF-PROPELLED TRACK WHOLE TREE CHIPPERS

Eliminate the need to forward or skid material with one of these bad boys: the best machines for disposing of or salvaging clearing and logging waste.

PAGE
12



MODEL 1850

This compact disc-style whole tree chipper is very popular with land clearers and tree services involved in big tree take downs. This proven workhorse features an 18" x 20.5" chipper opening and is available with a number of different set-ups: including with or without a loader, towable or self-propelled, and with or without a cab. A hydraulic winch is also a popular option to pull trees to the chipper. This unit is popular with tree services and many loggers that have loaders for separating whole trees and sorting logs.



18" - 24" diameter capacity

Engine options from 250- to 700-hp

Smooth, efficient chipping

Many options available

**LESS TRIMMING.
LESS FUEL.
LESS MAINTENANCE.
MORE PRODUCTION.**

**LESS IS
MORE.**

MODEL 1900

The Model 1900 is a rugged, high-production whole tree chipper for clearing land or harvesting whole trees for paper, pulp, fiber board or wood fuel. The unit can be equipped with an optional cab and loader. When a unit is not equipped with a loader, a tether remote enables the operator to control all functions of the chipper from a separate loading unit (*an optional wireless radio remote control is available.*) The 19" diameter capacity chipper features an infeed opening of 19" x 23", along with a powerful five-wheel feed system, to allow for easy crushing, compressing and chipping of limby materials.

MODEL 2400

This 24" diameter capacity disc-style chipper is equally popular with land clearing contractors and logging. With a chipper opening of 24" x 29", coupled with the powerful five-wheel feed system, this monster easily crushes, compresses and chips limby materials. This chipper can fill a 45-foot chip trailer in under ten minutes. Available with powerful knuckle-boom loader and roomy operator's cab with full instrument panel, engine gauges and joystick controls. An electrically-controlled engine throttle is standard; no need to waste fuel when wood is not there!

These chippers will produce more material, chip with less trimming, consume less fuel, load trailers fuller, and last longer – all with less maintenance. The powerful synchronized feed systems, coupled with the large chipper openings, allow these chippers to chip with minimal vibration while consuming less fuel. Side- and top-discharge options are offered. The top discharge provides much more flexibility by loading chips in almost any direction and allows for several vans to be spotted at one time. The side-discharge options throw harder thanks to the unique shape of our throwers.

Withstand the test of time.

Durable, high-production machines with low maintenance.

Bandit has been producing our line of disc-style whole tree chippers since the early 1990s. These proven workhorses deliver high-quality, uniform chips. All of our whole tree chippers are equipped with a reversing auto feed that automatically stops and reverses the material out of the cut, reducing the chances of plugging the feed system by automatically restarting the feed system when the engine regains full RPM.



Disc vs. Drum: *Bandit gives you a choice!*

Disc-style advantages:

The chipping angle of the disc-style chipper is approximately 45°. This angle allows the wood to be chipped with the grain, creating less vibration and consuming less energy.

Models 1850, 1900 and 2400:

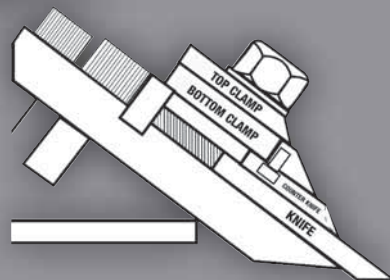
- Chip easier because of their fixed angle feed.
- Require less energy.
- Use less fuel.
- Chip with less vibration.

Drum-style advantages:

Drum-style chippers have larger openings with feed systems more closely coupled to the chipper.

Models 2090, 2290, 2590, 3090, 3590, 3590XL:

- Collapse limbs easier.
- Chip more material at one time.
- Process most fibrous materials common in warmer climates easier than a disc-style chipper.



Clamp-In Knives:

The 1900 and 2400 utilize babbitted knives that are clamped into the chipper. The chip size can be set at $\frac{3}{4}$ ", $\frac{7}{8}$ " or 1" to produce a specific chip size for pulp, paper or pressed board. The babbitted knife system will allow for more knife sharpening. A babbitted jig is used to set a precise knife width after sharpening.

Bolt-In Knives:

The 1850 and 2090 utilize simple, fixed bolt-in knives. The chips from the 2090 are slightly smaller than the chips from the 1850.

Babbitted knives are standard on the Model 3090 and 3590 whole tree chippers.

Have it your way.

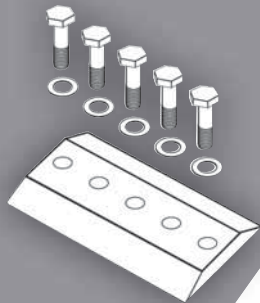
Order the Bandit chipper that best meets your needs.

Get a chipper with a loader, or with a conveyor. With a cab, or with remote controls. We offer more features and options than any manufacturer. Call your local Bandit dealer or representative to learn which time- and money-saving features are right for you!

Popular Options:

- Infeed Conveyor
-
- Joystick Controls
-
- Operator's Cab
-
- Knuckle-boom Loader
-
- Track Undercarriage
-
- Dirt Separator*

*Not available on all units.



MODEL 1850



A compact disc-style chipper for both tree services and land clearers. Easily disposes of trees and limbs up to 18" in diameter. Available with or without cab and loader.

SPECIFICATIONS

	STANDARD	METRIC
CAPACITY:	18" diameter	46 cm
CHIPPER OPENING:	18" x 20.5"	46 cm x 52 cm
FEED RATE:	100 FPM	2,987 cm/min
WEIGHT:	13,500 lbs.	6123.5 kg
LENGTH:	18' 4"	665.5 cm
WIDTH:	8' 5"	256.5 cm
HEIGHT:	10' 8"	325 cm
ENGINE:	250 - 325 hp	187 - 242 kW
DISCHARGE CHUTE:	270° hydraulic swivel with hydraulic chip deflector	
HYDRAULIC TANK:	30 gallon	113.5 L
FUEL TANK:	60 gallon	227 L

MODEL 1900



A rugged, high-production whole tree chipper for clearing land or harvesting whole trees for paper, pulp, fiber board or wood fuel. Available with high-performance loader.

SPECIFICATIONS

	STANDARD	METRIC
CAPACITY:	19" diameter	48.3 cm
CHIPPER OPENING:	19" x 23"	49.5 x 59.5 cm
FEED RATE:	135 FPM	4,206 cm/min
WEIGHT:	38,000 lbs.	17,236 kg
LENGTH:	24'	731.5 cm
WIDTH:	8' 6"	259 cm
HEIGHT:	11' 9"	358 cm
ENGINE:	535 or 540 hp	397 - 403 kW
DISCHARGE CHUTE:	220° hydraulic swivel with hydraulic chip deflector	
HYDRAULIC TANK:	150 gallon	567 L
FUEL TANK:	195 gallon	738 L

*NOTE: MODEL 2400 WITH END-DISCHARGE SHOWN

MODEL 2400*



This 24" diameter capacity monster of a disc-style chipper is equally popular with land clearing contractors and loggers. The powerful five-wheel feed system easily crushes, compresses, and chips limby material.

SPECIFICATIONS

	STANDARD	METRIC
CAPACITY:	24" diameter	61 cm
CHIPPER OPENING:	24" x 29"	61 cm x 74 cm
FEED RATE:	119 FPM	3962.5 cm/min
WEIGHT:	64,000 lbs.	29,029 kg
LENGTH:	31'	945 cm
WIDTH:	11'	335 cm
HEIGHT:	13'	396 cm
ENGINE:	700 hp	523 kW
DISCHARGE CHUTE:	220° hydraulic swivel with hydraulic chip deflector	
HYDRAULIC TANK:	200 gallon	757 L
FUEL TANK:	340 gallon	1,287 L

20" - 36" diameter capacity

Engine options from 250- to 1,200-hp

Large openings

Close-coupled feed systems

THE PEOPLE HAVE SPOKEN: BANDIT IS THE KING OF THE FOREST



Bandit's complete line of drum-style whole tree chippers are the essential machines for delivering low-cost raw material for biomass and fuel wood markets. Our chippers save time and money by fully loading chip trailers, saving on fuel costs. You can eliminate lost time associated with spotting vans with our versatile swivel discharges. Need more pulling power? Bandit's powerful feed systems easily crush limbs and branches, pulling whole trees into the chipper. *Also available with self-propelled track undercarriage.*



MODEL 2090

The Model 2090 is a compact whole tree chipper designed for limby materials and is very popular with land clearers and tree services involved in big tree take-downs. This workhorse features a 24.5" x 26" opening and is available with or without a loader. When equipped with a loader, the unit is available with an optional cab. Available with replaceable knife holders and optional babbitted knives.

MODEL 2290

The 2290 is an upgraded version of the 2090 and designed specifically for those harvesting materials for the biomass energy market. This unit has fixed-end discharge that will put maximum tonnage in the chip van. It also has a more productive feed system and is equipped with an infeed conveyor.



MODEL 2590

The Bandit Model 2590 is a mid-size drum-style whole tree chipper for smooth, economical chipping. Engine options are available from 375- to 600-horsepower. The Model 2590 will completely pack 50-foot chip vans, thanks to the powerful discharge system. The 37" diameter x 30" wide drum means smooth chipping with minimal vibration. Featuring a 26.25" tall by 30" wide chipper opening.

MODEL 3090

The Model 3090 is a powerful, high-production whole tree chipper featuring a 36" wide by 30" high chipper opening, for material up to 24" in diameter. The large chipper opening, along with powerful feed system, allows the Model 3090 to process very limby materials. The 3090 is available with or without a loader. A rugged, 37" diameter by 36" wide drum chipper with inter-baffling provides years of dependable service.

MODEL 3590

The Models 3590 is the ideal machine for converting tops from logging and land clearing operations into dimensional chips. This unit features a 48" wide by 30" high chipper opening. The powerful four feed wheel system easily crushes limbs and branches. The track-style infeed conveyor easily pulls whole trees into the chipper. The stationary discharge system fully loads end opening chip vans like never before. This unit can be equipped with a deluxe swiveling cab and loader.

MODEL 3590XL

For maximum production, choose the Bandit Model 3590XL. This powerful drum-style whole tree chipper features a 48" diameter x 48" wide drum, engine options up to 1,200-horsepower, and a 48" wide by 36" high chipper opening. The stationary discharge packs chip vans full, meaning fewer trips to the dump site. Experience all the power of the Model 3590 with a durable 48" diameter drum.

Bring it on.

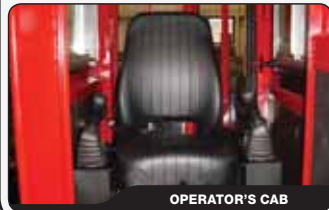
A chipper with an appetite.

Bring on the toughest, limbiest materials: these machines can handle it. The Bandit line of drum chippers have become the most popular whole tree chippers in the industry thanks to their large openings, powerful feed systems, and most importantly, because of the ruggedness of their design and construction, centered around the heavy-duty baffled drum.

Special Features & Options



AIR COMPRESSOR



OPERATOR'S CAB

Air Compressor

An 11-horsepower air compressor with 24 gallon air tank is available as an option. This serves as a useful option to assist with blowing debris off of the machine after a days work. It also can be utilized to run an air impact wrench to help make knife changing quicker. Please remember that the air impact can be used to tighten the knife bolts down, but a torque wrench **MUST** be utilized per the operator's manual instructions to ensure proper torque.

Operator's Cab

A roomy operator's cab is available on all Bandit whole tree chippers. Joystick controls mounted within the arm rest of the operator's seat provide easy loader operation. A full instrument panel with engine gauges, as well as heat and air conditioning, windshield wipers, and defroster fan are included.



MODEL 2090



The Bandit Model 2090 is the most versatile chipper in its class. Featuring a replaceable knife holder drum, which allows it to be equipped with bolt-in or babbitted knives. Also available with track undercarriage. Optional 9-foot track-type infeed conveyor available.

SPECIFICATIONS

	STANDARD	METRIC
CAPACITY:	20" diameter	50.8 cm
CHIPPER OPENING:	24.5" x 26.25"	62.2 x 66.7 cm
FEED RATE:	110 FPM	.55 mps
WEIGHT:	18,000 lbs.	8,164 kg
LENGTH:	21' 6"	655 cm
WIDTH:	8' 6"	259 cm
HEIGHT:	10' 4"	315 cm
ENGINE:	250 - 350 hp	186 - 260 kW
DISCHARGE CHUTE:	270° hydraulic swivel with hydraulic chip deflector	
HYDRAULIC TANK:	60 gallon	227 L
FUEL TANK:	60 gallon	227 L

MODEL 2290



The Model 2290 is a compact whole tree chipper with the power to crush and compress limbs and tops. Features a 9-foot track-type infeed conveyor (standard), allowing material to be fed to the chipper with ease.

SPECIFICATIONS

	STANDARD	METRIC
CAPACITY:	20" diameter	56 cm
CHIPPER OPENING:	24.5" x 26.25"	62.2 x 66.7 cm
FEED RATE:	110 FPM	.55 mps
WEIGHT:	33,000 lbs.	14,968 kg
LENGTH:	29' 6"	899 cm
WIDTH:	8' 3"	251.46 cm
HEIGHT:	11' 5"	348 cm
ENGINE:	250 - 440 hp	186 - 328 kW
DISCHARGE CHUTE:	Stationary discharge with side/side, up/down deflector	
HYDRAULIC TANK:	85 gallon	321.7 L
FUEL TANK:	130 gallon	492 L



TRACK-TYPE INFEED CONVEYOR

Track-type Infeed Conveyor Chain

The wide track-type conveyor chain extends the width of the feed system and provides assistance to the feed system for heavy materials and ridges to assist in forwarding material to the chipper. Easily feed multiple stems, piles of brush and short pieces of material using the wide track infeed conveyor. A 5-1/2' long conveyor is optional on the 1850, 1900, 2090 and 2400; a 9' long conveyor is standard on the Models 2290, 2590, 3090 and 3590.

Looking for a **used** chipper? Log on to www.banditchippers.com!

DRUM-STYLE | WHOLE TREE CHIPPERS

MODEL 2590



The 2590 features a large throat opening of 26.25" tall x 30" wide to easily accommodate whole trees, tops, and logging slash, and can process roughly 65 tons of material an hour, filling a 54-foot chip van in under 30 minutes. Features a 9-foot track-type infeed conveyor (standard).

SPECIFICATIONS

	STANDARD	METRIC
CAPACITY:	22" diameter	55.8 cm
CHIPPER OPENING:	26.25" x 30"	66.7 x 76.2 cm
FEED RATE:	115 FPM	.58 mps
WEIGHT:	36,000 lbs.	16,329 kg
LENGTH:	30' 6"	929.6 cm
WIDTH:	8' 5"	257 cm
HEIGHT:	11' 5"	348 cm
ENGINE:	375 - 600 hp	280 - 447 kW
DISCHARGE CHUTE:	Stationary discharge with side/side, up/down deflector	
HYDRAULIC TANK:	85 gallon	303 L
FUEL TANK:	130 gallon	492 L

MODEL 3090



The Model 3090 was redesigned in 2008, and is now equipped with the same features found on the popular model 3590. With a large 30" x 36" opening, it will easily process whole trees up to 24" in diameter. Features a 12-foot track-type infeed conveyor (standard).

SPECIFICATIONS

	STANDARD	METRIC
CAPACITY:	24" diameter	61 cm
CHIPPER OPENING:	30" x 36"	76.2 x 91.4 cm
FEED RATE:	120 FPM	.635 mps
WEIGHT:	46,000 lbs.	20,865 kg
LENGTH:	39'	1188.72 cm
WIDTH:	10' 6"	320 cm
HEIGHT:	12' 6"	381 cm
ENGINE:	535 - 630 hp	399 - 470 kW
DISCHARGE CHUTE:	Stationary discharge with side/side, up/down deflector	
HYDRAULIC TANK:	200 gallon	575 L
FUEL TANK:	200 gallon	575 L

MODEL 3590



The secret to the Model 3590's power lies in its newly designed discharge system and one-of-a-kind feed system: the most powerful feed system ever developed on a whole tree chipper. Features a 14-foot track-type infeed conveyor (standard).

SPECIFICATIONS

	STANDARD	METRIC
CAPACITY:	30" diameter	76.2 cm
CHIPPER OPENING:	30" x 48"	76.2 x 122 cm
FEED RATE:	115 FPM	.58 mps
WEIGHT:	62,000 lbs.	28,122 kg
LENGTH:	41'	1250 cm
WIDTH:	10' 11"	332.7 cm
HEIGHT:	12' 2"	371 cm
ENGINE:	700 - 875 hp	522 - 652 kW
DISCHARGE CHUTE:	Stationary discharge with side/side, up/down deflector	
HYDRAULIC TANK:	200 gallon	757 L
FUEL TANK:	350 gallon	1,325 L

MODEL 3590XL



The Model 3590XL offers all the power of the Model 3590 standard, with a 48" diameter drum. The larger drum reduces vibration and fuel consumption for more efficient chipping. Engine options up to 1,200-hp. Features a 14-foot track-type infeed conveyor (standard).

SPECIFICATIONS

	STANDARD	METRIC
CAPACITY:	36" diameter	91.4 cm
CHIPPER OPENING:	36" x 48"	91.4 x 91.2 cm
FEED RATE:	90 FPM	.4572 mps
WEIGHT:	75,000 lbs.	34,019 kg
LENGTH:	43' 6"	1,325 cm
WIDTH:	11' 8"	355.6 cm
HEIGHT:	12' 8"	386 cm
ENGINE:	700 - 1200 hp	522 - 894 kW
DISCHARGE CHUTE:	Stationary discharge with side/side, up/down deflector	
HYDRAULIC TANK:	200 gallon	575 L
FUEL TANK:	350 gallon	1,324 L

FEATURED PRODUCT: MODEL 2590 DRUM-STYLE CHIPPER

The Bandit Model 2590 has become our most popular whole tree chipper. This medium range whole tree chipper with 22" diameter chipping capacity is of ideal size for both the logger and land clearing contractor. The standard infeed conveyor is great for feeding brush and slash. The 27" diameter top feed wheel and 10-5/8" diameter bottom feed wheel assist in feeding limby materials. The powerful stationary discharge allows the Bandit Model 2590 to fully pack even the largest chip trailers. Plenty of power is offered, with engine options ranging from 375- to 600-horsepower available.





MODEL 1850T

A great lot clearing machine and equally effective in general land clearing. Powered by a 312B Caterpillar® undercarriage, this proven workhorse boasts an 18" x 20.5" chipper opening. All Bandit self-propelled whole tree chippers eliminate most of the labor associated with tree disposal and are equipped with swivel discharge spouts to broadcast chips over the site.

MODEL 1900T

Our most popular land clearing chipper is the Model 1900 Track. Powered by a 325EL Caterpillar® undercarriage, the Model 1900 Track is a favorite of right-of-way clearing contractors. An optional dirt separator is also available, which assists in removing a large portion of the loose bark, limbs, and dirt that shake loose during the chipping process.

MODEL 2400T

Eliminate the need to forward or skid material by utilizing a track Bandit on your next clearing project! This 24" diameter capacity hydraulic feed disc-style chipper offers high production and maneuverability. Perched on a 325EL Caterpillar® undercarriage, this powerful unit is one of the best machines for disposing of or salvaging clearing and logging waste.

MODEL 2090T

This 20" capacity hydraulic feed chipper is a great intermediate chipper, and is especially effective for processing forked trees and piles of brush. The Model 2090 Track features a 24.5" x 26" opening and is powered by a 312B Caterpillar® track undercarriage. Also available as a remote controlled track unit without cab and loader.



- **18" - 24" diameter capacity**
- **Sturdy Caterpillar® track undercarriage**
- **Engine options up to 700-horsepower**
- **Available with cab and loader**

IT'S TIME TO GET ON THE RIGHT TRACK.



MODEL 2290T

The Model 2290 Track is an extremely versatile chipper that will excel in most every type of land clearing operation. Its smaller size makes it particularly useful in situations with spongy ground or steep inclines, where towable chippers may not be a viable option.

MODEL 2590T

Featuring a 22-inch capacity and engine options up to 600-hp, the model 2590 is Bandit's most popular whole-tree chipper. It can produce as much as 80 tons/hour of chips. In track form, it uses a Caterpillar 320L chassis. This machine is a favorite of loggers producing biomass chips, as well as land clearing contractors.

MODEL 3090T

On a Caterpillar 325EL undercarriage, this mean machine runs with a footprint of 11 pounds/square-inch when outfitted with 800 millimeter pads. Rugged and capable, this high-production chipper is ideally suited for companies working dense utility or pipeline clearing.

Our high production whole tree track chippers offer power and portability for land clearing, forestry, and logging operations. All are equipped with swivel discharge spouts to broadcast chips over the site, or for quickly loading multiple chip vans. Four models to choose from.

(All Bandit drum-style chippers can be equipped with optional self-propelled track undercarriage.)

Take the chipper to the trees.

Powerful chipping on a dependable track undercarriage.

Eliminate the need to forward or skid material with our powerful track chippers. Our track Bandit whole tree chippers greatly reduce the labor and cost associated with tree disposal. All can be equipped with swivel discharge spouts to broadcast chips over the site. These truly are the best machines for disposing of or salvaging clearing and logging waste. All track units can be ordered with or without a cab and loader.

MODEL 1850T



Equipping the Model 1850 with a 312B steel track undercarriage allows the chipper to travel over rough terrain not accessible by towable units. Available with or without cab and loader.

SPECIFICATIONS

	STANDARD	METRIC
CAPACITY:	18" diameter	45.7 cm
CHIPPER OPENING:	18" x 20.5"	45.7 x 52 cm
FEED RATE:	100 FPM	2,987 cm/min
WEIGHT:	32,000 lbs.	14,515 kg
LENGTH:	23' 2"	706 cm
WIDTH:	9'	228.6 cm
HEIGHT:	10' 8"	325 cm
ENGINE:	250 - 325 hp	187 - 242 kW
TRACKS:	312B Steel Track / Triple Grouser / 137.4" Long	
HYDRAULIC TANK:	67 gallon	253 L
FUEL TANK:	100 gallon	378 L

MODEL 1900T



Take the chipper to the trees! The Model 1900 with Caterpillar 325EL steel track undercarriage eliminates the need to forward or skid material to the chipper. Available with or without cab & loader.

SPECIFICATIONS

	STANDARD	METRIC
CAPACITY:	19" diameter	48.2 cm
CHIPPER OPENING:	19" x 23"	48.26 x 58.5 cm
FEED RATE:	135 FPM	4,114 cm/min
WEIGHT:*	66,000 lbs.	29,937 kg
LENGTH:	28'	853.4 cm
WIDTH:	10' 11"	332.7 cm
HEIGHT:	11' 4"	354.5 cm
ENGINE:	440 - 540 hp	328 - 403 kW
TRACKS:	325EL / Triple Grouser / 184" Long	
HYDRAULIC TANK:	125 gallon	473 L
FUEL TANK:	195 gallon	738 L

*APPROXIMATE WITH CAB AND LOADER

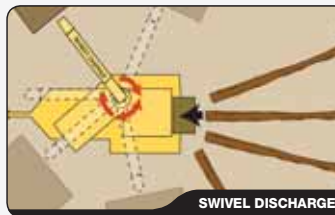
MODEL 2400T



The Model 2400 Track takes chipping to the next level. Equipped with Caterpillar 325EL steel track undercarriage and an optional cab & loader. (Unit without cab and loader is available with radio remote control.)

SPECIFICATIONS

	STANDARD	METRIC
CAPACITY:	24" diameter	61 cm
CHIPPER OPENING:	24" x 29"	61 x 74 cm
FEED RATE:	119 FPM	3,627 cm/min
WEIGHT:	85,000 lbs.	38,555 kg
LENGTH:	35'	1,066.8 cm
WIDTH:	11' 2"	340.4 cm
HEIGHT:	11' 10"	360.7 cm
ENGINE:	700 hp	523 kW
TRACKS:	325EL / Triple Grouser / 199" Long / 164" on Ground	
HYDRAULIC TANK:	200 gallon	757 L
FUEL TANK:	340 gallon	1,287 L



Discharge Chips in Any Direction

Pack Chip Trucks Full

Eliminate lost time associated with spotting vans! All Bandit chippers are equipped with powerful chip throwers to broadcast chips over the site or to fully load chip trailers.

Benefits of a Swivel Discharge

- Several vans can be spotted at the chipper.
- Chip into chip boxes from the roadway.
- Load directly over the hitch.
- Easily separate chips on a landing by species or quality.
- Spread chips over the site.

For more on these rugged track machines,

SELF-PROPELLED TRACK | WHOLE TREE CHIPPERS

MODEL 2090T



The Model 2090 with 312B track undercarriage goes where towable chippers don't dare. Choose from an optional remote controlled unit, or a unit with cab and loader for complete maneuverability.

SPECIFICATIONS

	STANDARD	METRIC
CAPACITY:	20" diameter	50.8 cm
CHIPPER OPENING:	24.5" x 26"	51.5 x 61 cm
FEED RATE:	100 FPM	3,048 cm/min
WEIGHT:	33,000 lbs.	14,968 kg
LENGTH:	20'	609.6 cm
WIDTH:	9' 7"	292 cm
HEIGHT:	11' 3"	343 cm
ENGINE:	250 - 325 hp	187 - 242 kW
TRACKS:	325EL Steel Track / Triple Grouser / 137.4" Long	
HYDRAULIC TANK:	100 gallon	378.5 L
FUEL TANK:	145 gallon	549 L

MODEL 2290T



The 2290 Track processes a wide variety of material while providing excellent flotation and maneuverability. Many options available to enhance operator comfort and efficiency.

SPECIFICATIONS

	STANDARD	METRIC
CAPACITY:	20" diameter	50.8 cm
CHIPPER OPENING:	24.5" x 26"	51.5 x 61 cm
FEED RATE:	110 FPM	3,048 cm/min
WEIGHT:	37,500 lbs.	14,968 kg
LENGTH:	27' 10"	609.6 cm
WIDTH:	9' 7"	292 cm
HEIGHT:	11' 2"	343 cm
ENGINE:	250 - 440 hp	187 - 242 kW
TRACKS:	315L Steel Track / Double Grouser / 600 MM	
HYDRAULIC TANK:	85 gallon	378.5 L
FUEL TANK:	130 gallon	549 L

MODEL 2590T



This mid-sized whole tree track chipper is designed for those contractors looking for a highly productive machine without stepping up to a larger model machine. Available with engine options up to 600-hp.

SPECIFICATIONS

	STANDARD	METRIC
CAPACITY:	22" diameter	50.8 cm
CHIPPER OPENING:	26.25" x 30"	51.5 x 61 cm
FEED RATE:	115 FPM	3,048 cm/min
WEIGHT:	61,500 lbs.	14,968 kg
LENGTH:	31' 4"	609.6 cm
WIDTH:	11' 11"	292 cm
HEIGHT:	11' 7"	343 cm
ENGINE:	375 - 600 hp	187 - 242 kW
TRACKS:	320L Steel Track / Double Grouser / 174" Long	
HYDRAULIC TANK:	85 gallon	378.5 L
FUEL TANK:	130 gallon	549 L

MODEL 3090T



The 3090 Track is used in many different applications, including pipeline clearing projects. This unit features a deluxe operator's cab with electronic joystick controls for smooth loading.

SPECIFICATIONS

	STANDARD	METRIC
CAPACITY:	24" diameter	50.8 cm
CHIPPER OPENING:	30" x 36"	51.5 x 61 cm
FEED RATE:	120 FPM	3,048 cm/min
WEIGHT:	85,640 lbs.	14,968 kg
LENGTH:	35'	609.6 cm
WIDTH:	11' 9"	292 cm
HEIGHT:	11' 8"	355.6 cm
ENGINE:	535 - 630	187 - 242 kW
TRACKS:	325EL Steel Track / Triple Grouser / 199" Long	
HYDRAULIC TANK:	200 gallon	378.5 L
FUEL TANK:	200 gallon	549 L

FEATURED PRODUCT: MODEL 2090 WHOLE TREE TRACK CHIPPER

Our Model 2090 Track has become one of our most popular self-propelled whole tree chippers. The 2090's compact size, large chipper opening and optional infeed conveyor makes it a favorite with clearing contractors and loggers capturing logging slash. The 2090 track is most commonly sold without a loader, and fed by a track loader with the track loader operator controlling all functions of the chipper via radio remote control.



log on to <http://www.banditchippers.com> and view our Video Library.



Equipment for today's global economy.

Times change. Markets shift. Prices rise and fall. In an unstable economy, one thing remains the same. *When you buy Bandit, you buy the best.* For over twenty-five years, we've been committed to producing quality products for the tree care, forestry, and waste reduction markets. All of our products are built according to customer specifications and with the highest quality and craftsmanship. For this reason, Bandit equipment yields one of the highest re-sale values on the market.

We are proud to be a leader in the worldwide biomass energy market. We are avid supporters of renewable energy initiatives, and strive to provide equipment that can help reduce our dependence on fossil fuels, while reducing carbon emissions and stimulating our global economy. Biomass can easily supply 10% of the world energy needs, and we are committed to helping reach that goal.

Welcome to the Bandit network.

We are proud to offer our line of chippers, grinders and recyclers to all the corners of the world. When you buy Bandit, you gain instant access to the most dedicated, committed network of dealers worldwide. Thanks to our network of over 170 dealer locations, we are able to stand by ready to assist with all your chipper and grinder needs. So remember, when you're making your purchasing decision, don't settle for anything less. **Choose Bandit. Choose the best.**

BANDIT INDUSTRIES, INC. // 6750 MILLBROOK ROAD // REMUS, MI 49340 // PH. 1-989-561-2270 // 1-800-952-0178 // SALES@BANDITCHIPPERS.COM // HTTP://WWW.BANDITCHIPPERS.COM



Mixed Sources

Product group from well-managed forests, controlled sources and recycled wood or fibre
www.fsc.org Cert no. SW-COC-001530
© 1996 Forest Stewardship Council



Partnerships for the future.

Bandit is committed to being a leader in the tree care and waste reduction industries. By forming partnerships with other dedicated organizations and dealer networks, Bandit provides a wealth of knowledge, innovation and support to their customers.

All specifications, dimensions, standards and options are subject to change without notice. Dimensions and weights may vary, depending on options and engines selected. Bandit Industries, Inc. reserves the right to change designs, specifications and options without prior notice. All figures shown in technical data were current at the time of printing. However, these can change as a result of further product development. Please contact Bandit Industries, Inc. for more information. Made in the USA. Printed in the USA. © 2011 Bandit Industries, Inc. All Rights Reserved.