

OVER 50 YEARS OF SERVICE TO THE INDUSTRY

# Broce Broom

THE  LEADER  
**250 Series**



Visit our web site at  
[www.brocebroom.com](http://www.brocebroom.com)

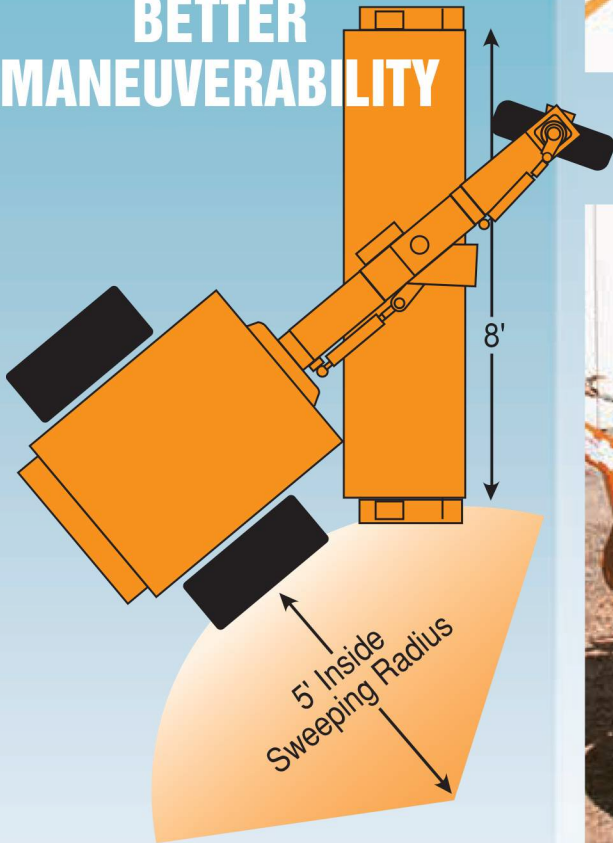
CALL TOLL FREE

**866-579-2488 - Sales**  
**877-227-8811 - Parts & Service**

**Kubota**  
BB-250-B

**ASK YOUR  
NEAREST BROCE  
DEALER FOR A  
DEMONSTRATION  
TODAY!**

## IN TIGHT PLACES BROCE BB250 OFFERS BETTER MANEUVERABILITY



## BB-250 POWER PLANTS

- Kubota 24 HP diesel or
- Water Cooled
- 12 Volt Electrical

Broce offers a trailing type broom function that allows full contact on the road surface without manual adjustments. The brush, as a standard feature, has hydraulic float, plus down pressure for extra heavy sweeping.



## STANDARD HEAVY DUTY SHOCK ABSORBER

Shock absorber provides smoother brush operation and longer brush life.

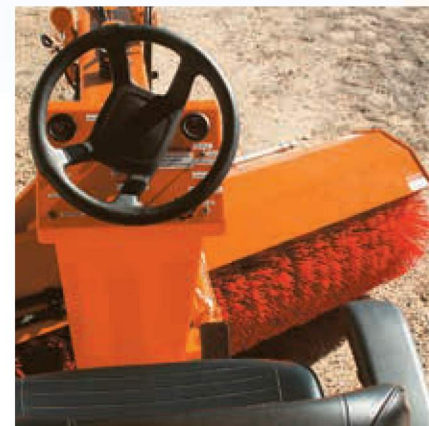
## HITCH WARNING ALARM SYSTEM

When hitch is folded down for towing, red light flashes to remind you to disengage rear wheel drive hubs.



## 100% BRUSH VISIBILITY WHILE SWEEPING

Operator has full view brush-to road contact at all times.





## KEEP DUST TO A MINIMUM FOR CONVENIENCE & SAFETY

- 72 gallon capacity
- 2.1 gpm electric pump
- 8 spray nozzles
- galvanized spray bars
- suction strainer filter
- back flow valve

## WATER SPRAY SYSTEMS



## DUST CONTROL WHEN IT'S NEEDED

### SINGLE BRUSH DRIVE MOTOR

- Sauer Danfoss high torque
- 192 brush RPM
- Easy brush replacement

### HYDROSTATIC FOOT CONTROL

- To move your Broce Broom forward or reverse - simply move the rocker pedal in the direction you want to go.

### JOYSTICK CONTROL- PLUS EASY ACCESS FROM OPERATORS STATION

- Joystick operates brush raise, lower, float, down pressure, along with right and left brush swing.



# BROCE BROOM MODEL BB-250-B SPECIFICATIONS

## Standard Equipment on All Units

- Safety orange paint
- 8' steel core with 6 3/8" x 24" poly flat wafers
- Electric over hydraulic brush lock
- Certified roll-over protection structure and canopy ISO 3471 Compliant
- Seat Belts ISO 6683 Compliant
- Power steering
- 2-wheel hydraulic drum brakes with manual parking brake
- 16 gauge core cover
- 72 gallon water sprinkler system
- 2" ball tow hitch with surge brakes and tow lights
- Hydraulic tow hitch
- Gauge package includes: oil, water, alternator, fuel and hour meter
- P185/70R14" radial tires
- Sauer - Danfoss hydrostatic
- Wheel Drive - hydraulic motors
- Single direct drive motor on brush drive
- Broom controls - two spool joystick valve with adjustable down pressure and float position
- Steering - orbital type steering w/dead steer capabilities
- Padded seat with arm rests and seat belt
- Reverse alarm

## Optional Equipment

- 6' core (in lieu of std. 8')
- 2 5/16" ball hitch or pintle eye hitch
- Amber beacon light
- Amber strobe light
- Front work lights and rear tail lights
- Rear work lights (2 single beam)
- Hitch disconnect warning light
- Paint (other than standard safety orange)
- Engine shutdown safety system
- Windshield
- Traffic horn

## THE HYDRAULIC TOW HITCH ON EVERY BB-250 IS NOW STANDARD WITH NO CRANKING, MAKING IT EASIER TO TRANSPORT THE MACHINE TO THE JOB SITE



When the BB-250 is being towed, the coupler at the end of the hitch will activate the mechanical brakes anytime the driver of the towing vehicle applies his brakes.

Dimensions	Height 7'10" Width 8' Length 12'6"
Engine - Kubota or Caterpillar diesel	Kubota 24 HP - Tier 4
Machine Weight	3,000 lb.
Weight w/Water System	3,600 lb.
Broom Size	6 3/8" ID x 24" OD
Broom Length	Full 8' (Optional 6')
Broom Drive	Single Hydraulic Motor
Brush Speed	192 RPM
Broom Angle	Full 40 Degrees (both ways)
Steering	60 Degrees (both ways)
Outside Turning Radius	10' 9"
Inside Sweeping Radius	5'
Fuel Capacity	9 U.S. gallon
Hydraulic Oil Capacity	15 U.S. gallon
Speed	0 to 10 mph

**Distributed by:**

*Broce Broom*

**Broce Manufacturing Co.** • 205 E. Main • Norman, OK 73069-1304  
Sales: 866-579-2488 • Parts & Service: 877-227-8811