

Dynapac Tandem Asphalt Rollers



Dynapac CC800, CC900, CC900S, CC1000, CC1100, CC1200, CC1300
CC1100C, CC1200C, CC1300C

Sustainable Productivity

Atlas Copco

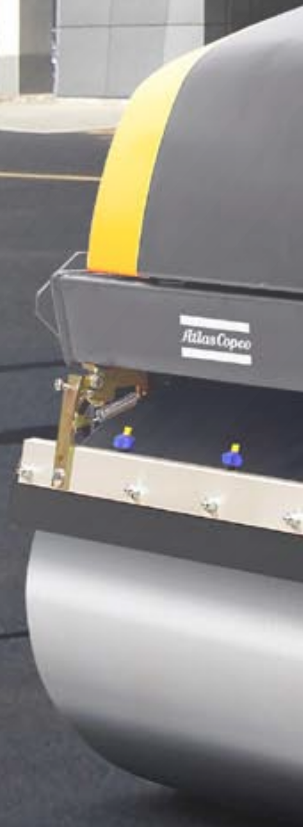
SMALL TANDEM ASPHALT ROLLERS

Dynapac is the world's most specialized and experienced manufacturer of compaction and paving equipment. Our expertise has resulted in numerous successful innovations. To put it simply, we know this business and we've got the power to transform groundbreaking ideas into cost-efficient solutions and reliable machines.

Building on exp

That is why Dynapac is a winner when you compare overall profitability and life-cycle cost. In our lean and target-oriented organization there are very short and straight paths between development, manufacturing and our world-wide service network. Your benefit is quality all through - in products, maintenance, service and overall performance.

Our small tandem vibratory rollers are a series of highly efficient rollers that can make your project more profitable and strengthen your reputation as a trustworthy working partner.



perience



SMALL SCALE COMPACTION WORK

Dynapac's range of small tandem asphalt rollers – the Dynapac CC800, CC900, CC900S and CC1000 – are used primarily for small-scale compaction work such as pavements, cycle paths, small roads and small parking areas – places that need compaction but are difficult to reach with a larger roller.

These small tandem rollers come with an operating mass of approximately 1.6 tons and drum widths of 31.5", 35" and 39".

GET THE JOB DONE

Low noise - high power

The powerful and quiet water-cooled 3-cylinder diesel engine produces 17.3 kW (23,5 hp). With the large drum diameter and the drive motors connected in series, there is excellent accessibility and hill-climbing capability. Propulsion and vibration are standard on both drums.

As an option, vibration can be switched off on either the front or the rear drum.

Fetaures that matters

These rollers are equipped with an innovative sprinkler tube and nozzles that are self-draining to minimize the risk of ice plugs in cold weather.

The 30 gal water tank allows long periods of work between refills*. To further extend the work periods, an optional sprinkler timer is available. The powerful water pump is the same model as used on our larger asphalt machines.

Operator friendly

A spacious, vibration-damped operator platform and an ergonomically positioned step make these machines extremely operator-friendly. A modern, easily legible instrument panel with a warning panel and a fuel gauge is standard.

Easy transportation

To easily transport the roller between workplaces, the machines are fitted with a robust central lifting eye that allows fast and easy loading. Standard folding ROPS keeps the transport height to a minimum.

Minimum service required

Extended service intervals minimize maintenance costs. The machines have a maintenance-free steering hitch and steering cylinder. The few remaining service points are easily accessible.

** If you chose the PLUS-version, you will get an even larger watertank - 50 gal.*



Dynapac CC900S

The "Single Arm" version - Dynapac CC900S - has the right side of the front drum free, which makes it possible to compact close to the walls. The front and rear drum have an offset of 2.36".

*Experience is the base of excellence.
Dynapac will always help you to
reach perfection.*

ON TIME AND ON BUDGET

Powerful and silent 3 cylinder water cooled diesel engine.

Central lifting point.

Standard foldable ROPS.

Spacious operator platform.

Fail-safe brakes

Ergonomic boarding steps.

Serial connected drum drive motors contribute to excellent hill-climbing capacity.

Maintenance-free steering hitch and steering cylinder.

GET THE JOB DONE. ON TIME AND ON BUDGET



Easily readable instrument panel with fuel gauge. Very low vibration levels in the operator's platform.



Big drum diameter makes compaction easier even on soft tricky asphalt mixes. Thick drum shells for long life.



Pressurized sprinkler system with a powerful water pump and with self draining sprinkler tubes and nozzles.



Long service intervals together with maintenance free steering hitch and steering cylinder contribute to a minimum of maintenance.



A robust central lifting eye allows fast and easy loading.



A spacious vibration damped operator platform with comfort seat and dual forward/reverse levers for total operator comfort.

Choose between CC and CC PLUS Packages



CC Package for Dynapac CC800, CC900, CC900S and CC1000

Included:

- Backup alarm
- Working lights
- Foldable ROPS incl. seat belt



CC PLUS Package for Dynapac CC800, CC900, CC900S and CC1000

Included:

- Backup alarm
- CE sign
- Comfort seat
- Cup/can holder
- Foldable ROPS incl. seat belt
- Large Watertank, 50 gal
- Rotating beacon
- Sprinkler timer
- Vibr. shut off, front or rear drum
- Working lights

Options for CC Plus package:

- Driving lights, right or left handed
- Dual forward/reverse control
- Spring loaded scrapers

Options for CC and CC Plus Dynapac CC800, CC900, CC900S & CC1000

- Biodegradable hydraulic fluid
- Fire extinguisher
- Hearing protectors
- Licence plate light

- Rear view mirror, traffic view
- Service kit 50/500/1000 h
- Side direction lights (driving lights required)
- Slow moving vehicle sign

- Special color (one or two)
- Tool set
- Water tank cover, lockable

STREET-SMART COMPACT TANDEM ROLLERS

Dynapac's series of articulated compact tandem rollers – the Dynapac CC1100, CC1200 and CC1300 – are designed for compaction on city streets where size and noise matter most. The series have an operating weight of 2,4 metric tons to 4 metric tons and are available with double steel vibratory drums or one vibration drum and four static rubber tires - a combi version.

All models feature design improvements and an engine, which is quieter than ever.

QUIETER THAN EVER

On the surface

All three double drum models feature vibration and drive on both drums. A large drum diameter makes them especially effective on soft asphalt. The optimum ratio of drum diameter to static linear load reduces the risk of cracks.

All models in the series are perfect for urban areas, streets and roads. The CC1300 is also suitable for compacting subbases and bases and has the capacity to follow a paver.

In the driver's seat

An optional sideways sliding seat and operator-friendly dual front and reverse controls improve visibility for better control and better compaction. The ample clearance at the edge of the drums makes this true even close to high curbs.

The series feature a new control panel and low noise and vibration levels to reduce operator fatigue. A low center of gravity keeps the machines stable, and sturdy handgrips and steps enable safe boarding.

An interlock system prevents the engine from accidentally starting. An automatic brake lock is applied if the engine stops or if there is a problem in the hydraulic or electric brake circuits.

Ease of maintenance

Three separate filters in the sprinkler water system ensure no clogged sprinkler nozzles. The entire system can

be drained easily without special tools. Filters for hydraulic fluid, engine oil and fuel are easily accessible.

Modularity is one of the corner-stones when it comes to building Dynapac rollers. These are built from a lot of existing common parts. That means great parts availability and that these models will be offered for several years to come – thus underscoring the high second-hand value of Dynapac equipment.

Sustainable productivity

Dynapac develops and manufactures products with the goal of sustainability: low operating costs and long-lasting quality equipment that creates high-quality results for the companies who use Dynapac. These articulated small tandem asphalt rollers are no exception.

The rollers are powered by a water-cooled Kubota diesel engine. The Dynapac CC1100 and CC1200 provide a power of 35 hp and the CC1300 proves 45 hp. The low noise level benefits the operator and the surroundings, especially during night work.

Long service intervals mean fewer oil changes and less money spent on routine maintenance. The corrosion-free water tanks are made of impact-resistant and recyclable polyethylene plastic. As an option, the machines can be equipped with bio-degradable hydraulic oil.

Dynapac CC1100 CC1200 CC1300

All models available as combi version

The combi versions of the rollers reduce the risk of marrying newly laid asphalt when making sharp turns.

The rubber tires are operated in pairs by separate drive motors.



Hydraulic fluid, engine oil and fuel system filters are easy to reach and easy to change. Long service intervals means less downtime.

The corrosion-free and impact-resistant water tank is made of recyclable material. Large opening for easy filling.

Silent water cooled diesel engine.

Safety interlock to prevent accidents – Operator must be in the seat before the engine will start.

Ergonomic F&R-handle

Automatic brake lock if the engine stops or if there is a problem in the hydraulic or electric brake circuits.

Easy-drained sprinkler system – no special tools required.



ATTENTION TO DETAIL - THE BASE OF PERFECTION



Silent and powerful water cooled Kubota diesel engine. The large easy-to-open engine hood contributes to great accessibility.



The water tank has a large opening for easy filling.



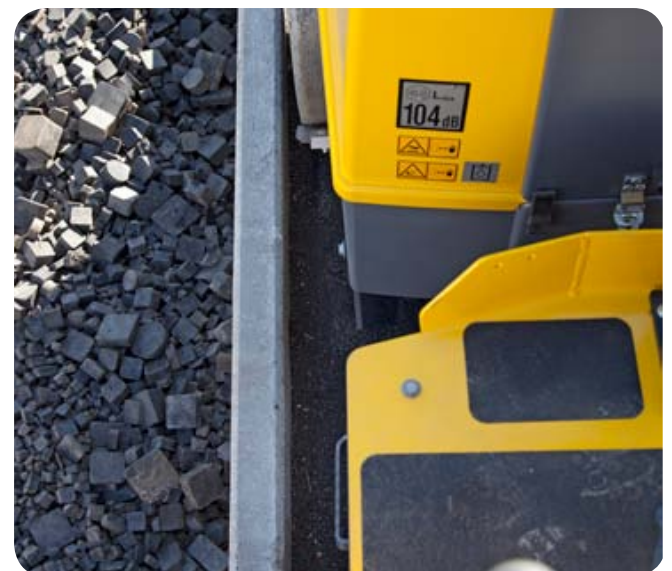
Pressurized sprinkler system with a powerful water pump and with self draining sprinkler tubes and nozzles.



Fail safe brakes on both drums (or drum + combi wheels) which apply automatically in the event of failure in engine, hydraulics or electrical fault in the brake system.



Sturdy handgrips and ergonomic steps enable safe boarding.



High clearance of the edge of the drums facilitates compaction close to high curb stones. Excellent view over the drum edges for better control and compaction results.

Choose between CC and CC PLUS Packages



CC Package for Dynapac CC1100, CC1200 and CC1300 + combi versions

Included:

Backup alarm
Working lights
Foldable ROPS
incl. 3 " seat belt



CC PLUS Package for Dynapac CC1100, CC1200 and CC1300 + combi versions



Included:

Backup alarm
Brake release
CE Sign
Dual arm rest
Dual forward/reverse control
Foldable ROPS incl. seatbelt
Rotating beacon
Sprinkler timer
Spring loaded scrapers

Slideable comfort seat
Vibration shut off, front drum
Working lights

Options for CC Plus package:

Driving lights, right and left handed
Dual frequency
Flow divider
Slidable lux seat

Options for CC and CC Plus Dynapac CC1100, CC1200 and CC1300

Biodegradable hydraulic fluid
Fire extinguisher
Foot rest
Hearing protectors

Licence plate light
Rear view mirror, traffic view
Service kit 50/500/1000H
Side direction lights (driving lights required)
Slow moving vehicle sign

Special color (one or two)
Tool set
Towing eyelet
Water tank cover, lockable

Technical Data

	CC800	CC900	CC1000	CC1100	CC1200	CC1300
Drum width, in	31,5	35	39	42	47	51
Masses						
Operating mass , lb (incl. ROPS)	3 475	3 500	3 700	5 200	5 750	8 600
Module mass, lb (front/rear)	1,630/1,845	1,650/1,850	1,730/1,970	2,500/2,700	2,800/2,975	4,200/4,400
Traction						
Speed range (mph)	0-6	0-6	0-6	0-6	0-6.2	0-6.2
Vertical oscillation (Deg)	±13	±13	±13	±10	±10	±10
Theor. Gradeability (%)	40%	40%	40%	49%	43%	37%
Compaction						
Centrifugal force , lb	3 820	3 820	3 820	5 170	6 070	7 420
Nominal amplitude, in	0,02	0,02	0,01	0,02	0,02	0,02
Static linear load lb/in (front/rear)	52/58	46/53	44/50	59/64	59/63	82/86
Vibration frequency, VPM (high/low amplitude)	4 200	4 200	4 200	3 420	3 420	3 120
Water tank, Gal	30	30	30	42	42	53
Engine						
Manufacturer/Model	Perkins 403D-11	Perkins 403D-11	Perkins 403D-11	Kubota D1701-M T4i	Kubota D1701-M T4i	Kubota V2203-MT4i
Rated power (hp), @ 2,600 rpm SAE J1995	23	23	23	35	35	44
Fuel tank capacity, Gal	6	6	6	13	13	13

	CC1100C	CC1200C	CC1300C
Drum width, in	42	47	51
Masses			
Operating mass, lb (incl. ROPS)	5 075	5 350	8 300
Module mass, lb (front/rear)	2,500/2,575	2,775/2,575	4,275/4,025
Traction			
Speed range (mph)	0-6	0-6	0-6
Vertical oscillation (Deg)	±10	±10	±10
Theor. Gradeability (%)	68%	63%	37%
Compaction			
Centrifugal force, lb	5 170	6 070	7 420
Nominal amplitude, in	0,02	0,02	0,02
Static linear load lb/in (front/rear)	59/63	59/55	83/78
Vibration frequency, VPM (high/low amplitude)	3 420	3 420	3 120
Water tank, Gal	42	42	53
Engine			
Manufacturer/Model	Kubota D1701-M T4i	Kubota D1701-M T4i	Kubota V2203-M T4
Rated power (hp), @ 2,600 rpm SAE J1995	35	35	44
Fuel tank capacity, Gal	13	13	13

Hydraulic system

Driving Axial piston pump with variable displacement and servo.
 2 radial piston motors with constant displacement.
 Vibration Gear pump/ motors with constant displacement.
 Steering Gear pump with constant displacement.
 Service brake Hydrostatic in forward and reverse lever.
 Parking/ Emergency brake Failsafe brake in both drums.



Atlas Copco Construction Mining Technique USA LLC
 3700 E 68th Ave, Commerce City, CO 80022 USA
 Phone +1 800 732-6762, Fax+1 303 288-8828
www.atlascopco.com