



GENESIS[®]

The Promise of Performance.

GXT 665R



GENESIS[®]



▲ DANGER
Keep 75 feet (23m)
away during operation

PRODUCT CATALOG



Division of
INTERNATIONAL
EQUIPMENT
SOLUTIONS

VISIT US ONLINE

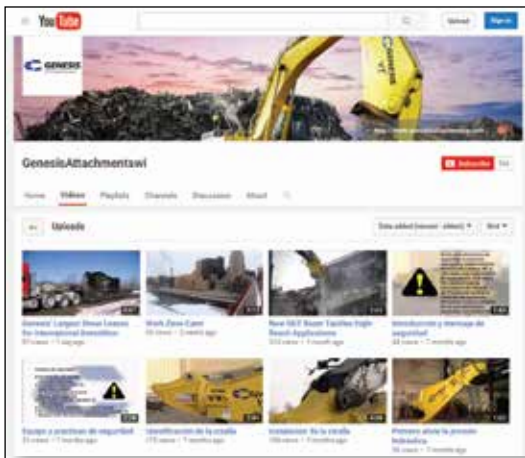
GENESISATTACHMENTS.COM



FACEBOOK.COM/GENESISATTACHMENTS



YOUTUBE.COM/GENESISATTACHMENTSWI



LINKEDIN.COM/COMPANY/GENESIS-ATTACHMENTS-LLC



DIVISION OF IES

Genesis is a division of International Equipment Solutions, LLC, a global engineered equipment company that focuses extensive resources on supporting customers with strong value propositions and outstanding customer service across domestic and international markets. For more information, visit iesholdings.com

CONTENTS

JAW ARMOR	4
GXT MOBILE SHEAR	5
GXP MOBILE SHEAR	6
GSS SUBSEA SHEAR	7
GVP VERSI PRO 07 & 15	8 - 9
GDT RAZER	10
GDR DEMOLITION RECYCLER	11
LXP® LOGIX PROCESSOR	12 - 13
GMP MECHANICAL PULVERIZER	14
GMP C MECHANICAL PULVERIZER C SERIES	15
GCP CONCRETE PROCESSOR	16
GCC CONCRETE CRACKER	17
GLS LINKAGE SHEAR	18
GRS REBAR SHEAR	19
GSD SEVERE-DUTY GRAPPLE	20
GSD C SEVERE-DUTY GRAPPLE C SERIES	21
GSG SCRAP GRAPPLE	22
REBUILD SERVICES	23
PARTS	23
SERVICE	23
TECHNICAL SERVICE TRAINING	23



GXT



GXP



GSS



GVP



GDT



GDR



LXP®



GMP



GMP C



GCP



GCC



GLS



GRS



GSD



GSD C



GSG

All Genesis attachments are covered by a 12-month, 1,500-hour (whichever occurs first) warranty. Genesis reserves the right to continually make product improvements designed to positively enhance performance. Patents: genesisattachments.com/patents



Tough. Long-lasting. Reliable.

Attachments protected with Genesis Shear Jaw Armor™ and Grapple Jaw Armor not only deliver productivity, uptime and value, but also far exceed normal wear cycles. Constructed from our proprietary GenGuard steel, the Jaw Armor abrasion-resistant system maintains structural integrity and reduces build-up and hard-surfacing downtime.

To learn how Genesis Jaw Armor can increase your uptime and productivity, call **888-SHEAR-IT**.

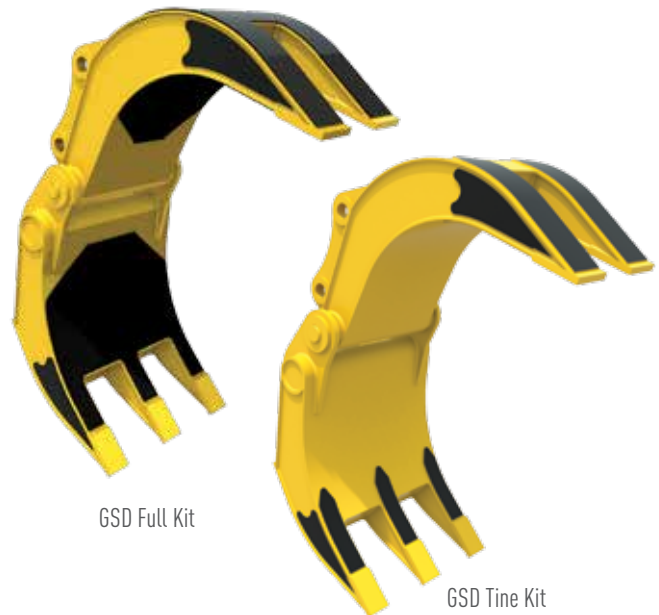
FEATURES

- Reduces downtime and expense of frequent welding maintenance
- Abrasion-resistant protective system
- Virtually eliminates build-up and hard-surfacing
- Maintains structural integrity
- Available on new and for existing attachments
- Does not affect shear blade mounting



APPLICATIONS

- Demolition
- Scrap Processing
- Recycling



GSD Full Kit

GSD Tine Kit

GSD APPLICATIONS

- Demolition
- Scrap Handling & Compaction
- Rip-rap Handling
- Road Building & Reconstruction
- C&D Sorting
- Land Clearing

Genesis Jaw Armor is available on the following attachments:



GXT



GXP



LXP®



GLS



GRS



GSD



GXT APPLICATIONS

- Scrap Processing
- Demolition



JAWARMOR™
COMPATIBLE

GXT FEATURES

- 1 All the power in a shorter, lighter shear with a center of gravity closer to the excavator. Most models mount on smaller size carriers for lower initial investment and hourly operating costs.
- 2 Bolt-on piercing tip encapsulates front of upper jaw, minimizing risk of damage while reducing welding build-up and downtime
- 3 Short primary cutting blades position apex closer to the rear of the jaws and draw material further into the jaws where higher force makes efficient cuts
- 4 Weld-on, replaceable, highly abrasion-resistant steel rhino horn protects front of upper jaw, reducing downtime and welding build-up
- 5 Dual guide blade length matches piercing tip length enabling blades to be shimmed independently to accommodate piercing tip wear
- 6 Improved jaw geometry makes it easier to pick up material and reduces wear from ground contact
- 7 Reverse-mounted hydraulic cylinder shortens shear length and weight while protecting rod from damage
- 8 Remote-mounted hydraulic speed valve improves serviceability and minimizes stress on other critical hydraulic components
- 9 Lower shear height improves visibility while providing superior rigidity and structural integrity

GXT Model Number	Weight*	Jaw Opening	Jaw Depth	Reach**	Minimum Excavator Weight	
	(lbs.)	(ins.)	(ins.)	(ft. ins.)	Boom Mount*** (lbs.)	Stick Mount*** (lbs.)
GXT 115****	3,100	16	18	5' 0"	15,000	25,000
GXT 115R****	3,550	16	18	7' 8"	18,000	30,000
GXT 225	4,200	18	20	5' 8"	25,000	35,000
GXT 225R	4,900	18	20	7' 11"	30,000	45,000
GXT 335	6,500	23	26	6' 5"	27,000	45,000
GXT 335R	7,300	23	26	8' 11"	37,000	66,000
GXT 445	9,500	28	28	7' 2"	40,000	75,000
GXT 445R	11,000	28	28	10' 1"	48,000	90,000
GXT 555	11,600	30	30	8' 0"	50,000	90,000
GXT 555R	13,100	30	30	11' 0"	55,000	110,000
GXT 665	13,200	32	32	9' 0"	55,000	110,000
GXT 665R	14,700	32	32	12' 0"	68,000	120,000
GXT 775	15,500	35	37	9' 8"	68,000	135,000
GXT 775R	17,750	35	37	13' 0"	79,000	150,000
GXT 995	18,000	39	42	10' 8"	79,000	170,000
GXT 995R	20,000	39	42	14' 2"	100,000	180,000
GXT 1555	23,000	44	46	13' 5"	110,000	190,000
GXT 1555R	26,750	44	46	17' 2"	145,000	250,000
GXT 2055	32,000	48	50	14' 5"	145,000	240,000
GXT 2055R	36,200	48	50	17' 7"	180,000	280,000
GXT 2555	50,500	54	56	15' 5"	220,000	Consult Factory
GXT 2555R	56,500	54	56	21' 5"	240,000	Consult Factory

*Weight includes mounting bracket to attach to excavator.

**Distance is measured from the attachment mounting pivot (boom or stick) forward.

***2nd-member installations that are at or near minimum excavator weight and all 3rd-member installations require pre-approval from Genesis.

****The GXT 115 and GXT 115R have a single guide blade.

GXP APPLICATIONS

- Structural Steel
- Scrap Processing
- Primary Demolition
- Tire Recycling



GXP FEATURES

- 1 Proprietary regeneration valve improves cycle time by up to 33% compared to standard hydraulic systems
- 2 Enclosed structure adds strength and rigidity while protecting the cylinder
- 3 Exclusive easy-to-shim AutoGuide system helps maintain blade tolerances by offsetting jaw deflection
- 4 Patented bolt-on piercing tip is replaced in minutes without grinding or welding
- 5 Four-way indexable guide blades, razor blade and primary blades provide four useable cutting edges
- 6 Exclusive dual guide blade system accommodates heat expansion at the tip while maintaining tighter tolerances where the primary and secondary cutting blades pass
- 7 Shrouded heavy-duty pivot design provides structural strength and long-term durability
- 8 Built with Weldox steel for the best combination of structural strength and wear durability

GXP Model Number	Weight*	Jaw Opening	Jaw Depth	Reach**	Minimum Excavator Wt. Boom Mount	Minimum Excavator Wt. Stick Mount
	(lbs.)	(ins.)	(ins.)	(ft. ins.)	(lbs.)	(lbs.)
GXP 200***	5,000	18	17	5' 10"	25,000	40,000
GXP 200R***	5,500	18	17	8' 9"	30,000	45,000
GXP 300***	7,700	23	24	7' 0"	36,000	50,000
GXP 300R***	8,100	23	24	10' 2"	45,000	68,000
GXP 400	8,800	28	29	8' 0"	45,000	75,000
GXP 400R	11,000	28	29	11' 7"	55,000	90,000
GXP 440 MAXX	11,400	28	29	8' 9"	50,000	80,000
GXP 440R MAXX	13,000	28	29	12' 2"	60,000	100,000
GXP 500	12,050	32	32	9' 1"	55,000	98,000
GXP 500R	13,350	32	32	12' 5"	67,000	110,000
GXP 660 MAXX	13,700	32	32	10' 0"	60,000	100,000
GXP 660R MAXX	15,500	32	32	13' 6"	75,000	120,000
GXP 700	13,800	35	35	10' 0"	70,000	110,000
GXP 700R	17,000	35	35	13' 10"	90,000	135,000
GXP 990 MAXX	15,500	35	35	10' 7"	88,000	135,000
GXP 990R MAXX	18,500	35	35	15' 0"	100,000	170,000
GXP 1000	15,000	38	38	10' 9"	90,000	140,000
GXP 1000R	18,000	38	38	15' 1"	100,000	170,000
GXP 1200	20,700	42	42	11' 0"	110,000	170,000
GXP 1200R	26,300	42	42	15' 11"	130,000	250,000
GXP 1500	23,700	44	44	11' 6"	120,000	190,000
GXP 1500R	29,500	44	44	16' 5"	160,000	250,000
GXP 2500	46,000	46	48	14' 7"	200,000	280,000
GXP 2500R	54,000	46	48	21' 9"	240,000	360,000

*Weight includes mounting bracket to attach to excavator.

**Distance is measured from the attachment mounting pivot (boom or stick) forward.

***GXP 200 and 300 series shears offer a single guide blade system.

GXP MAXX models deliver extra shear power for heavy-duty processing. Extended reach brackets are available on all non-rotating shears.

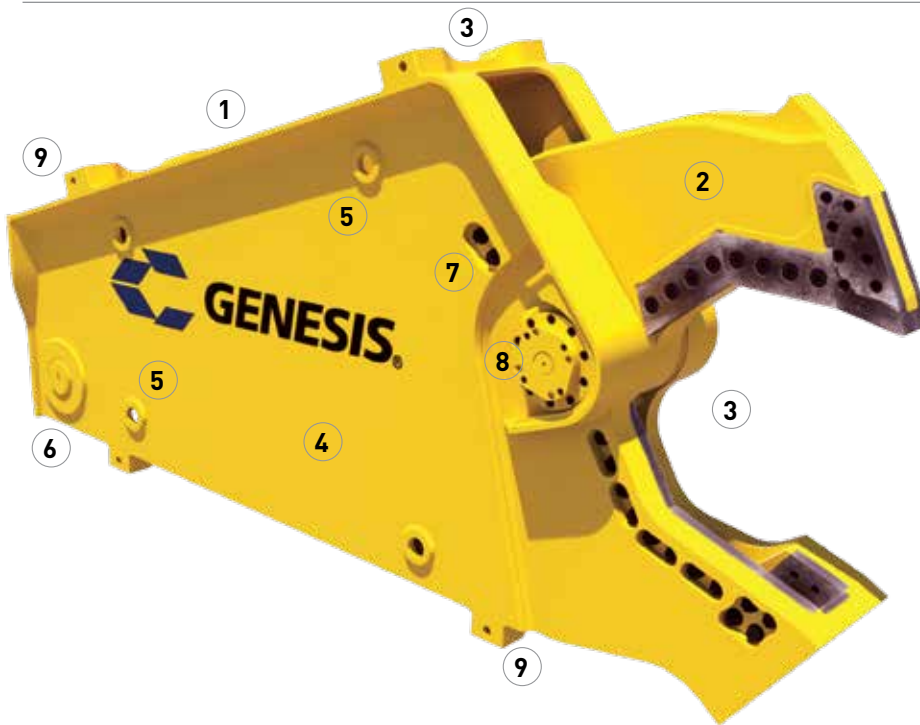


GSS APPLICATIONS

- Offshore Platform Decommissioning
- Offshore Pipeline and Piling Cutting
- Underwater Steel Cutting
- Cable Hung — Operated by Subsea Power Pack or from Surface Power

GSS FEATURES

- 1 Pressure tested to operate at depths down to 10,000 feet
- 2 Anti-corrosion primer and paint for supreme protection in harsh marine environments
- 3 Xylan® anti-corrosion coated fasteners and critical surfaces
- 4 Zinc anodes for galvanic corrosion protection
- 5 Holes for easy draining and flushing
- 6 Sealed, greaseable pivot points
- 7 Exclusive easy-to-shim AutoGuide system helps maintain blade tolerances by off-setting jaw deflection
- 8 Heavy-duty pivot design protected by an anti-corrosion coating provides structural strength and long-term durability
- 9 Multi-position rigging to hang and operate while suspended by a cable crane



GSS Model Number	Weight	Jaw Opening	Jaw Depth
	(lbs.)	(ins.)	(ins.)
GSS 660	13,300	32	32
GSS 2500	41,000	46	48

Xylan is a registered trademark of Whitford Corporation



GVP 07 APPLICATIONS

- Interior Demolition
- Scrap Processing
- On-site Material Processing and Handling

SHEAR JAWS

- Patented pivot geometry creates peak power for piercing and cutting
- Weld-on wear plate and piercing tip
- Four-way indexable guide blades and primary blades provide four useable cutting edges

CRACKER JAWS

- Patented pivot geometry creates peak power when jaws are fully open, where it's most needed to crush concrete
- Open relief design allows concrete to pass through lower jaw

GRAPPLE JAWS

- Recessed welds are protected from wear, increasing grapple life
- Boxed-tine construction creates a very high strength and lightweight grapple—each tine will withstand the full breakout force of the carrier
- Replaceable tine tips are abrasion-resistant
- Inside radius matches that of a 55-gallon barrel

WIRE CUTTER JAWS

- Bolt-on interchangeable cutting blades can be sharpened and are easily replaced
- Curved jaw design gathers material deeper into the jaw for maximum cutting power
- Unique self-tensioning pivot group maintains optimal blade clearance
- For non-ferrous wire only



Skid Steer Bracket
Mounting bracket option for skid steers features a traction grip to provide safe entry and exit for the operator

GVP 07 FEATURES

- 1 Each jaw's pivot group stays intact, allowing the use of a press-fit pin design for a stronger, more durable product and making jaw change-outs safe, easy and fast
- 2 Built with Weldox steel for the best combination of structural strength and wear durability
- 3 360° rotation comes standard with every Versi Pro
- 4 The innovative bracket system accommodates a skid steer quick plate or a mini excavator lug plate change-over in 10 minutes
- 5 Electric over hydraulic system allows for jaw open or close and rotation with one hydraulic circuit
- 6 Proprietary regeneration valve improves cycle time by up to 33% compared to standard hydraulic systems
- 7 Jaw change-outs in 10 minutes with the coupler-style connection system

JAWS	Weight*	Jaw Opening	Jaw Depth	Reach**	Minimum Excavator Weight	Minimum Excavator Weight	Minimum Skid Steer Weight
	(lbs.)	(ins.)	(ins.)	(ft. ins.)	Boom Mount (lbs.)	Stick Mount (lbs.)	(lbs.)
Shear	1,375	11.5	11.5	5'6"	12,000	16,000	7,000
Cracker	1,385	14.5	13	5'8"	12,000	16,000	7,000
Grapple	1,420	32	15.5	5'11"	12,000	16,000	7,000
Wire Cutter	1,245	10.5	11.5	5'9"	12,000	16,000	7,000

*Weight includes mounting bracket to attach to excavator.

**Distance is measured from the attachment mounting pivot (boom or stick) forward.

The stability of each lift class varies between OEM skid steer and mini excavator models. Please consult with your Genesis salesperson for recommended carrier models. Control packages are available for carriers less equipped.



GVP 15 APPLICATIONS

Shear Jaws

- Scrap Processing
- Demolition
- Rebar
- Wire
- Tires
- Many Types of Non-ferrous

Cracker Jaws

- Demolition
- Concrete Recycling
- C&D Processing



SHEAR JAWS

- Patented bolt-on piercing tip is replaced in minutes without grinding or welding
- Four-way indexable guide blades, razor blade and primary blades provide four useable cutting edges
- Exclusive dual guide blade system accommodates heat expansion at the tip while maintaining tighter tolerances where the primary cutting blades pass



CRACKER JAWS

- Offset teeth rows maximize the ability to downsize material
- Patented pivot geometry creates peak power when jaws are near wide open, where it's most needed to crush concrete



GVP 15 FEATURES

- 1 Patented pivot system provides a power curve to match each jaw set's primary application
- 2 Built with Weldox steel for the best combination of structural strength and wear durability
- 3 360° rotation comes standard with every Versi Pro
- 4 Proprietary regeneration valve improves cycle time by up to 33% compared to standard hydraulic systems
- 5 Each jaw's pivot group stays intact, allowing the use of a press-fit pin design for a stronger, more durable product and making jaw change-outs safe, easy and fast
- 6 Jaw change-outs in 10 minutes with the coupler-style connection system

JAWS	Weight*	Jaw Opening	Jaw Depth	Reach**	Minimum Excavator Weight
	(lbs.)	(ins.)	(ins.)	(ft. ins.)	Stick Mount (lbs.)
Shear	3,200	16	15	7'5"	28,000
Cracker	3,200	25	25	8'3"	28,000

*Weight includes mounting bracket to attach to excavator.

**Distance is measured from the attachment mounting pivot (boom or stick) forward.

The stability of each lift class varies between OEM excavator models. Please consult with your Genesis salesperson for recommended carrier models.

GDT RAZER | GENESIS DEMOLITION TOOL



GDT RAZER APPLICATIONS

- Concrete Recycling
- C & D Processing
- Bridge Demolition
- Wire
- Copper
- Structural Steel
- Demolition
- Rebar
- Aluminum

GDT FEATURES

- 1 Low-cost, reversible, long-life crushing teeth are quickly and easily replaced, eliminating build-up
- 2 4-way indexable cutting blades feature an apex that draws material deeper into the jaw for more efficient cutting
- 3 Easy-to-change crushing teeth are available in several configurations to maximize performance in any application
- 4 Lighter weight ensures stable mounting on today's excavators and specialty high-reach machines
- 5 Short, flat-top head with bolt-on bracket shortens the center of gravity while making it easy to change mounting for different carriers
- 6 Open lower jaw allows material being processed to easily pass through, preventing jamming
- 7 Cylinder is reverse-mounted to protect from debris



GDT Model Number	Weight* (lbs.)	Jaw Opening (ins.)	Jaw Depth (ins.)	Reach** (ft. ins.)	Minimum Excavator Wt. Stick Mount (lbs.)
GDT 190	4,900	31	33	8' 0"	45,000
GDT 290	7,000	39	42	9' 2"	66,000

*Weight includes mounting bracket to attach to excavator.

**Distance is measured from the attachment mounting pivot (boom or stick) forward.

JAW CONFIGURATIONS



Pulverizer Jaws
150 and 200 models



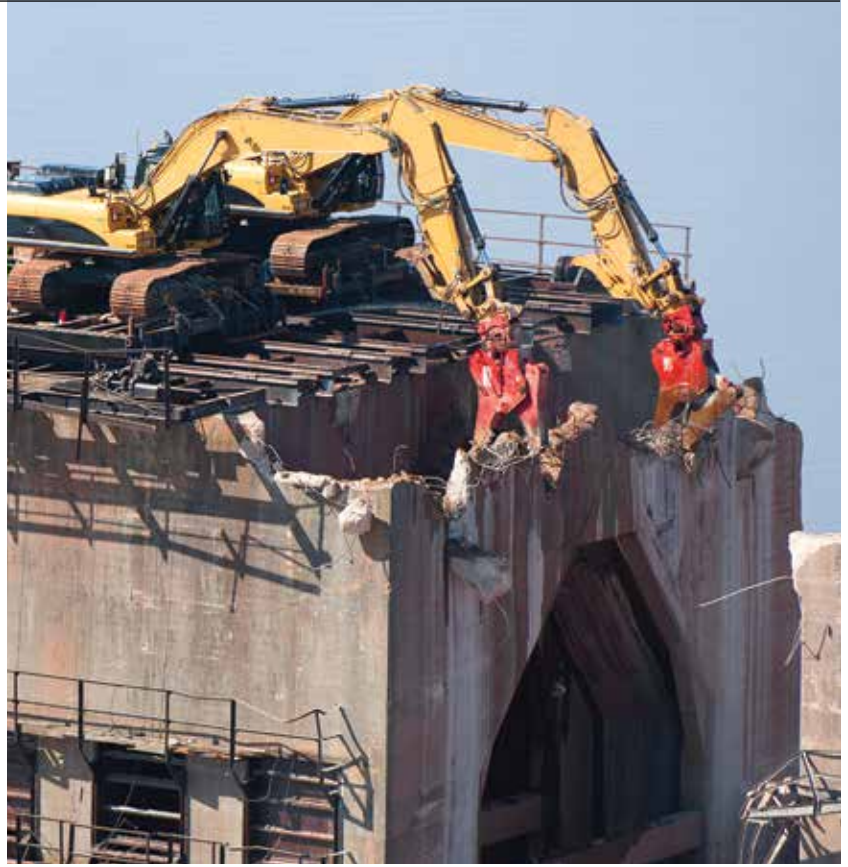
Pulverizer Jaws
300 and 400 models



Cracker Jaws
150 and 200 models



Shear Jaws
150, 200 and 300 models only



GDR APPLICATIONS

- Concrete Recycling
- Bridge Demolition
- C&D Processing
- Structural Steel
- Demolition
- Rebar
- Wire
- Aluminum
- Copper



300/400 Cracker Jaw Configuration

GDR FEATURES

- 1 Reverse-mounted cylinder protects cylinder rod from debris
- 2 Tight fit between the cylinder, body and upper jaw minimizes the risk of debris damaging internal components
- 3 360° rotation comes standard with every GDR
- 4 Combination of a large-bore cylinder and a regeneration valve eliminates the need for an intensifier and a complex hydraulic system
- 5 Built with WeldoX steel for the best combination of structural strength and wear durability
- 6 Heavy-duty pivot design with recessed end caps provides structural strength and long-term durability
- 7 Indexable blades provide two useable cutting edges
- 8 Extended chin aids in positioning concrete for processing
- 9 Bolt-on teeth and blades reduce maintenance time
- 10 Weld-on tooth and blade pockets greatly improve the ability to maintain the jaws, extending the GDR's useful life
- 11 Extended upper plate aids in positioning concrete for processing

GDR Model Number	Weight* (lbs.)	Jaw Opening (ins.)	Jaw Depth (ins.)	Reach** (ft. ins.)	Minimum Excavator Wt. Stick Mount (lbs.)
GDR 150	3,450	26	25	6' 4"	28,000
GDR 200	5,500	35	32	7' 7"	45,000
GDR 300	7,900	43	39	8' 9"	70,000
GDR 400	11,000	48	41	9' 10"	100,000

*Weight includes mounting bracket to attach to excavator.

**Distance is measured from the attachment mounting pivot (boom or stick) forward.

TRUE MULTI-PROCESSOR CAPABILITIES WITHOUT COMPROMISE.

The LXP®'s quick-change jaw sets go from shear jaws to pulverizer jaws or cracker jaws in 15 minutes to meet multiple jobsite needs. Unique pivot group configurations that stay with each jaw set provide maximum power at the piercing point when shearing or as jaws start to close when crushing concrete for optimum performance when and where you need it.

LXP® FEATURES

- 1 Jaw change-outs in 15 minutes with the coupler style connection system, hydraulically activated lock pin, jaws that stay intact and a stand with every jaw set – safe, easy and fast
- 2 Proprietary regeneration valve improves cycle time by up to 33% compared to standard hydraulic systems
- 3 Patented pivot system provides a power curve to match the jaw's primary application. Each jaw's pivot group stays intact, allowing the use of a press fit design for a stronger, more durable product.
- 4 Heavy-duty pivot design with recessed caps provides structural strength and long-term durability
- 5 Reverse-mounted cylinders protect the rods from debris
- 6 Enclosed structure adds strength and rigidity while protecting the cylinders



JAWARMOR™
COMPATIBLE

JAW STANDS



LXP 200 & 300: 680 lbs.
LXP 400 & 500: 780 lbs.
LXP 800: 1,100 lbs.

SHEAR JAWS

- 7 Patented bolt-on piercing tip is replaced in minutes without grinding or welding
- 8 Exclusive dual guide blade system accommodates heat expansion at the tip while maintaining tighter tolerances where the primary cutting blades pass (300 - 800 models only)
- 9 Four-way indexable guide blades, razor blade and primary blades provide four useable cutting edges

LXP® APPLICATIONS

Shear Jaws

- Demolition
- Bridge Demolition
- Structural Steel
- Rebar
- Wire
- Aluminum
- Copper

Cracker Jaws

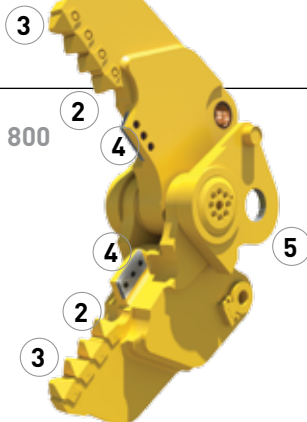
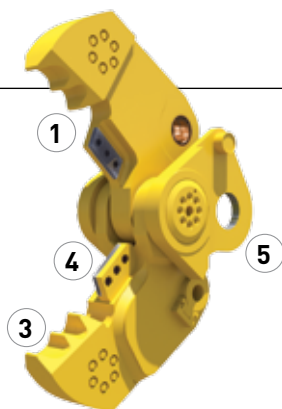
- Concrete Recycling
- C&D Processing
- Rebar
- Demolition

Pulverizer Jaws

- Demolition
- Concrete Recycling
- C&D Processing
- Rebar



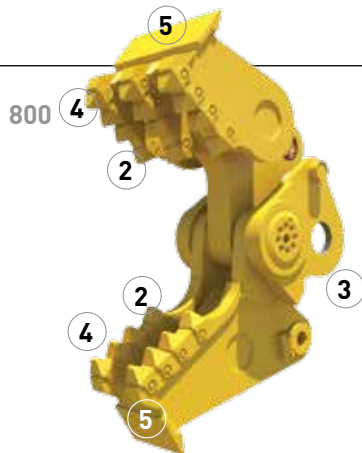
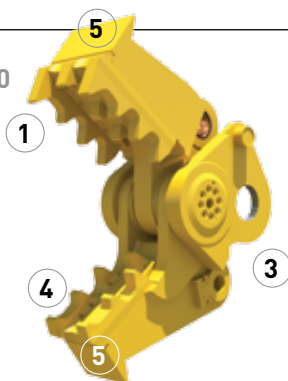
200-500



CRACKER JAWS

- 1 Teeth are easy to change and fully protect the parent material, eliminating the need for build-up and hard-surfacing (200-500 models only)
- 2 Bolt-on teeth and blades reduce maintenance and downtime (800 model only)
- 3 Cracker tips concentrate force for a greater ability to crush through heavy concrete
- 4 Indexable blades provide two useable cutting edges
- 5 Patented pivot geometry creates peak power when jaw is fully open, where it's most needed to crush large concrete

200-500



PULVERIZER JAWS

- 1 Bolt-on tooth bed features a fully replaceable crushing surface, eliminating the need for welding (200-500 models only)
- 2 Bolt-on teeth reduce maintenance and downtime (800 model only)
- 3 Patented pivot geometry creates peak power when jaws are fully open, where it's most needed to crush concrete
- 4 Tooth profile maximizes crushing force, pulverizing concrete from rebar like no other processor
- 5 Extended wear plates aid in positioning concrete for processing

LXP Model Number	Weight*	Jaw Opening	Jaw Depth	Reach**	Minimum Excavator Weight	
	(lbs.)	(ins.)	(ins.)		Boom Mount (lbs.)	Stick Mount (lbs.)
LXP 200 Shear	5,370	17	19			
LXP 200 CP	5,670	29	24	8' 0"	20,000	45,000
LXP 200 CC	5,650	38	28			
LXP 300 Shear	7,600	22	24			
LXP 300 CP	7,270	35	26	8' 6"	45,000	70,000
LXP 300 CC	7,560	43	30			
LXP 400 Shear	11,065	24	27			
LXP 400 CP	11,255	38	30	9' 6"	60,000	100,000
LXP 400 CC	11,145	47	33.5			
LXP 500 Shear	12,905	27	28			
LXP 500 CP	12,205	43	31	9' 11"	70,000	120,000
LXP 500 CC	12,715	51	34.5			
LXP 800 Shear	17,500	40	35			
LXP 800 CP	17,720	61	39	11' 8"	90,000	150,000
LXP 800 CC	17,600	71	50			

*Weight includes mounting bracket to attach to excavator.

**Distance is measured from the attachment mounting pivot (boom or stick) forward.



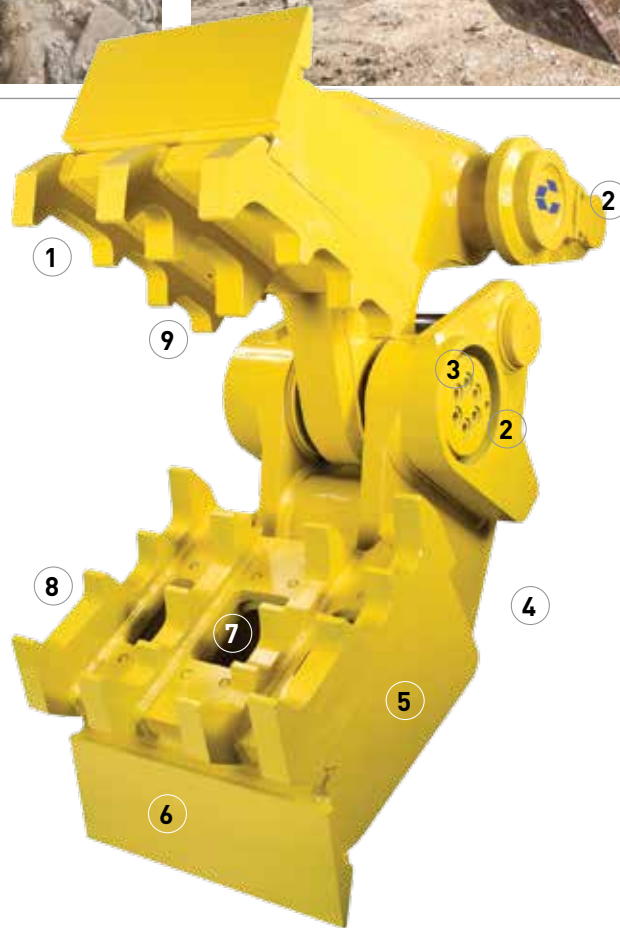
GMP | GENESIS MECHANICAL PULVERIZER

GMP APPLICATIONS

- Scrap Processing
- Demolition
- C&D Processing
- Concrete Recycling



POWER Series



GMP FEATURES

- 1 Teeth extend to protect parent steel from wear and abrasion
- 2 Common pivot group and pinning points accommodate the full line of Power Series linkage tools with one stiff arm — the mounting pad remains in place
- 3 Shrouded heavy-duty pivot design provides structural strength and long-term durability
- 4 The GMP stands upright for easy attachment changes, convenient storage and transport
- 5 Built with Weldom steel for the best combination of structural strength and wear durability
- 6 Extended chin blade aids in positioning concrete for processing
- 7 Relief area allows pulverized material to pass through lower jaw
- 8 Bolt-on tooth beds feature a fully replaceable crushing surface, eliminating the need for welding
- 9 Offset teeth rows maximize the ability to downsize material



STIFF ARM AND MOUNTING PAD

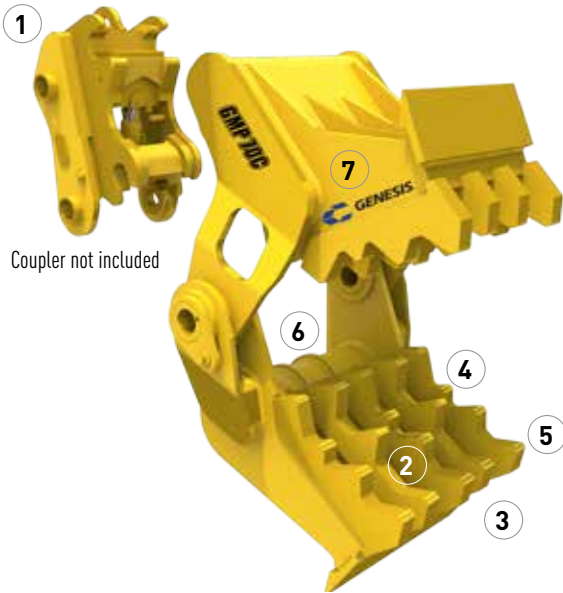
Comes standard with each GMP

GMP Model Number	Weight* (lbs.)	Jaw Opening** (ins.)	Jaw Depth (ins.)	Excavator Weight (lbs.)
GMP 50	5,600	30	28	40,000-60,000
GMP 70	6,206	34	32	60,000-80,000
GMP 90	7,172	40	35	80,000-110,000
GMP 140	10,600	52	44	110,000-150,000

*Weight includes mounting bracket and stiff arm.

**Jaw opening varies slightly depending on excavator mounting location.

Genesis linkage attachments are not compatible with quick couplers. Contact Genesis for more information.



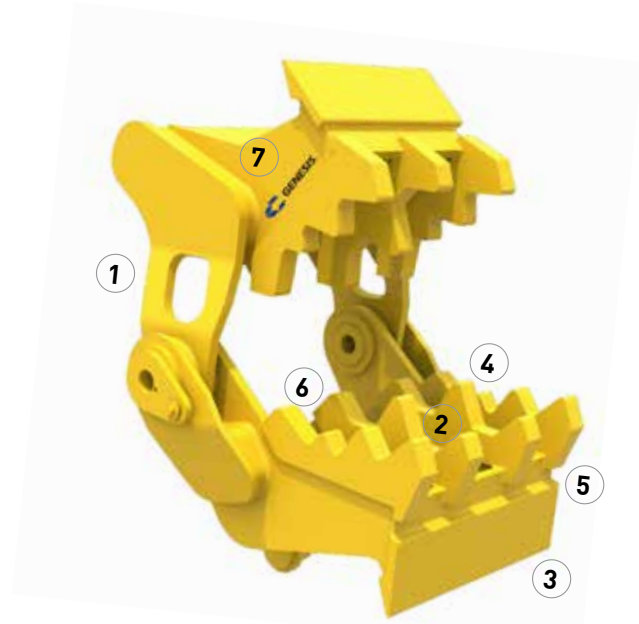
GMP 70C and 90C Weld-in Teeth Jaw Configuration

GMP C APPLICATIONS

- Demolition
- C&D Processing
- Concrete Recycling

GMP C FEATURES

- 1 The C Series is specifically designed to provide optimal performance with a quick coupler
- 2 Pass-through jaw design provides easy material processing and prevents jamming
- 3 Extended chin blades aid in positioning concrete for processing
- 4 Weld-in teeth can be rebuilt in place for extended life
- 5 All teeth extend beyond chin to protect parent steel from wear and abrasion
- 6 Offset teeth rows maximize the ability to downsize material
- 7 Built with Weldom steel for the best combination of structural strength and wear durability



GMP 50C Weld-in Teeth Jaw Configuration



STIFF ARM AND MOUNTING PAD

Comes standard with each GMP C

GMP C Model Number	Weight*	Jaw Opening**	Jaw Depth	Moving Jaw Width	Fixed Jaw Width	Excavator Weight
	(lbs.)	(ins.)	(ins.)	(ins.)	(ins.)	
GMP 50C	4,800	32	25	27.50	34	40,000 - 60,000
GMP 70C	5,800	36	29	29.25	36	60,000 - 80,000
GMP 90C	7,000	40	32.5	33.75	41	80,000 - 110,000

*Weight includes mounting bracket and stiff arm.

**Jaw opening varies slightly depending on excavator mounting location.

GCP | GENESIS CONCRETE PROCESSOR



GCP APPLICATIONS

- Concrete Recycling
- Demolition



GCP FEATURES

- 1 Power is derived from a protected large-bore cylinder, eliminating the need for an intensifier
- 2 One-piece bolt-on tooth bed and bottom wear pad protect parent material, are quick and easy to replace, and minimize build-up and hard-surfacing
- 3 Bolt-on rebar cutting blades and weld-in blade pockets are easy to replace and reduce maintenance
- 4 Large jaw opening readily pulverizes thick concrete
- 5 Heavy-duty pivot design with recessed end caps provides structural strength and long-term durability
- 6 Proprietary regeneration valve improves cycle time by up to 33% compared to standard hydraulic systems
- 7 Built with Weldox steel for the best combination of structural strength and wear durability

GCP Model Number	Weight* (lbs.)	Jaw Opening (ins.)	Jaw Depth (ins.)	Jaw Width (ins.)	Reach** (ft. ins.)	Minimum Excavator Wt. Stick Mount (lbs.)
GCP 410	4,650	34	29	20	6' 9"	45,000
GCP 410R	6,650	34	29	20	7' 9"	55,000
GCP 610	7,950	45	39	24	8' 8"	65,000
GCP 610R	9,950	45	39	24	9' 8"	85,000

*Weight includes mounting bracket to attach to excavator.

**Distance is measured from the attachment mounting pivot (boom or stick) forward.



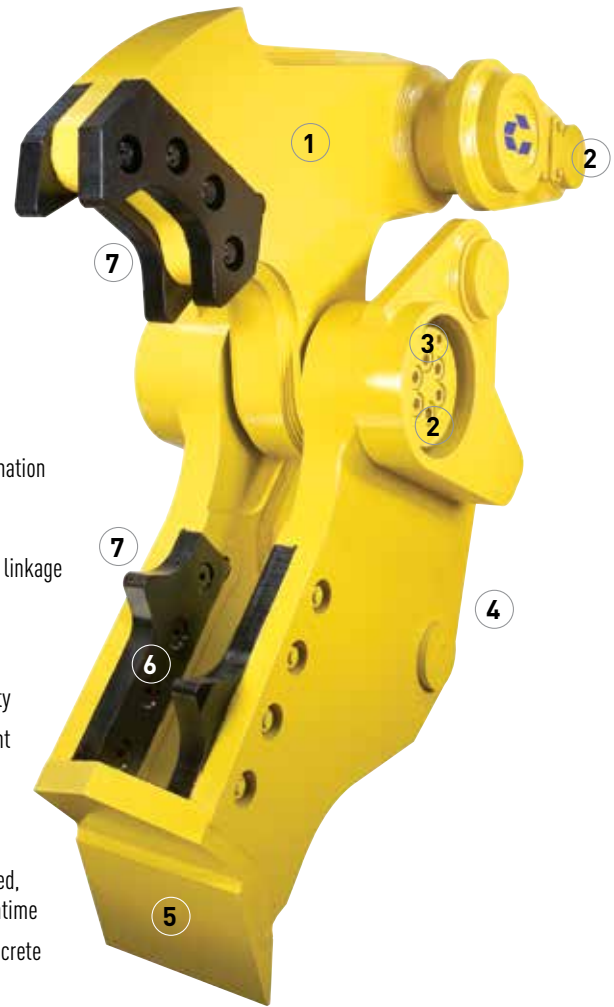
GCC APPLICATIONS

- Scrap Processing
- Demolition
- C&D Processing
- Concrete Recycling

POWER*Series*

GCC FEATURES

- 1 Built with Weldox steel for the best combination of structural strength and wear durability
- 2 Common pivot group and pinning points accommodate the full line of Power Series linkage tools with one stiff arm—the mounting pad remains in place
- 3 Shrouded heavy-duty pivot design provides structural strength and long-term durability
- 4 The GCC stands upright for easy attachment changes, convenient storage and transport
- 5 Extended chin blade aids in positioning concrete for processing
- 6 Affordable bolt-on wear parts can be rotated, maximizing blade life and minimizing downtime
- 7 Blade profile focuses force for optimal concrete processing and rebar cutting



STIFF ARM AND MOUNTING PAD

Comes standard with each GCC

GCC Model Number	Weight* (lbs.)	Jaw Opening** (ins.)	Excavator Weight (lbs.)
GCC 50	4,400	29	40,000-60,000
GCC 70	4,990	32	60,000-80,000
GCC 90	5,170	36	80,000-110,000

*Weight includes mounting bracket and stiff arm.

**Jaw opening varies slightly depending on excavator mounting location.

Genesis linkage attachments are not compatible with quick couplers. Contact Genesis for more information.

GLS | GENESIS LINKAGE SHEAR

GLS APPLICATIONS

- Scrap Processing
- Demolition
- C&D Processing
- Concrete Recycling



POWER Series



GLS FEATURES

- 1 Four-way indexable guide blades, razor blade and primary blades provide four useable cutting edges
- 2 Patented bolt-on piercing tip is replaced in minutes without grinding or welding
- 3 "Rhino horn" designed to aid in positioning material for processing
- 4 Common pivot group and pinning points accommodate the full line of Power Series linkage tools with one stiff arm — the mounting pad remains in place
- 5 Shrouded heavy-duty pivot design provides structural strength and long-term durability
- 6 The GLS stands upright for easy attachment changes, convenient storage and transport
- 7 Built with Weldox steel for the best combination of structural strength and wear durability

JAW ARMOR™
COMPATIBLE



STIFF ARM AND MOUNTING PAD

Comes standard with each GLS

GLS Model Number	Weight* (lbs.)	Jaw Opening** (ins.)	Jaw Depth (ins.)	Excavator Weight (lbs.)
GLS 50	4,100	21	21	40,000-60,000
GLS 70	4,696	24	24	60,000-80,000
GLS 90	5,313	27	27	80,000-110,000

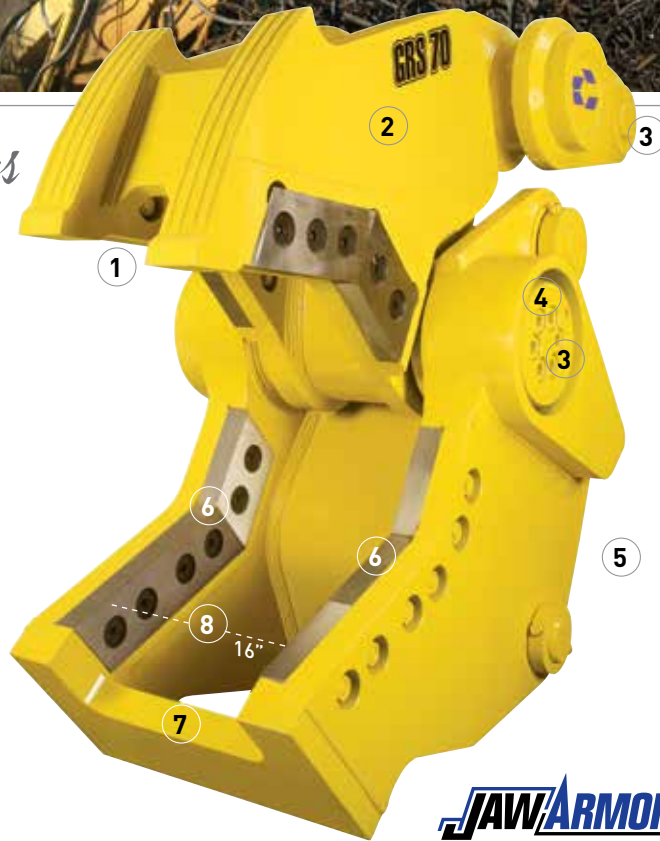
*Weight includes mounting bracket and stiff arm.

**Jaw opening varies slightly depending on excavator mounting location.

Genesis linkage attachments are not compatible with quick couplers. Contact Genesis for more information.



POWER *Series*



JAW ARMOR™
COMPATIBLE



STIFF ARM AND MOUNTING PAD

Comes standard with each GRS

GRS APPLICATIONS

- Scrap Processing
- Demolition
- C&D Processing
- Concrete Recycling

GRS FEATURES

- 1 Staggered jaws make two cuts with each cycle, applying maximum force to each cut
- 2 Built with Weldox steel for the best combination of structural strength and wear durability
- 3 Common pivot group and pinning points accommodate the full line of Power Series linkage tools with one stiff arm—the mounting pad remains in place
- 4 Shrouded heavy-duty pivot design provides structural strength and long-term durability
- 5 The GRS stands upright for easy attachment changes, convenient storage and transport
- 6 Four-way indexable blades provide four useable cutting edges
- 7 Cutaway chin plate provides a relief area for balled rebar while maintaining the rigid structural integrity of the lower jaw
- 8 16-inch cut length for higher value end product

GRS Model Number	Weight* (lbs.)	Jaw Opening** (ins.)	Jaw Depth (ins.)	Excavator Weight (lbs.)
GRS 70	6,098	26	27	65,000-80,000
GRS 90	6,718	30	30	80,000-110,000

*Weight includes mounting bracket and stiff arm.

**Jaw opening varies slightly depending on excavator mounting location.

Genesis linkage attachments are not compatible with quick couplers. Contact Genesis for more information.

GSD | GENESIS SEVERE-DUTY GRAPPLE



GSD APPLICATIONS

- Demolition
- Scrap Handling & Compaction
- Rip-rap Handling
- Road Building & Reconstruction
- C&D Sorting
- Land Clearing



GSD FEATURES

- 1 Patent-pending pivot group features a large pivot shaft, and bearings provide long-term durability
- 2 Built with Weldox steel for the best combination of structural strength and wear durability
- 3 Recessed welds are protected from wear, increasing grapple life
- 4 Replaceable tine tips are abrasion-resistant Hardox steel
- 5 Boxed-tine construction creates a very high strength and lightweight grapple – each tine will withstand the full breakout force of the excavator



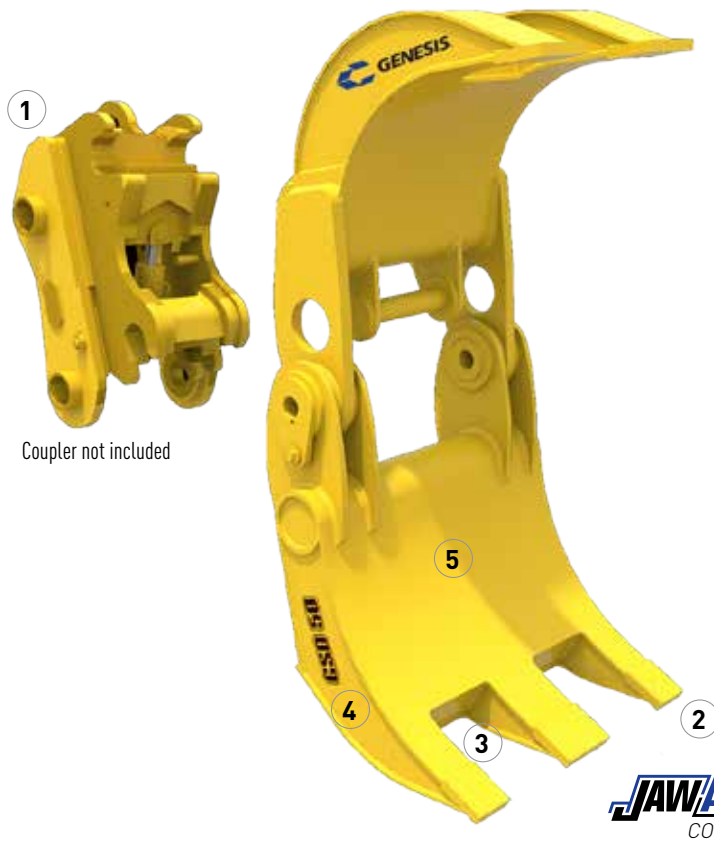
STIFF ARM AND MOUNTING PAD

Comes standard with each GSD

GSD Model Number	Weight* (lbs.)	Capacity (yd³)	Jaw Opening** (ins.)	Jaw Closed (ins.)	Moveable Jaw Width (ins.)	Lower Jaw Width (ins.)	Excavator Weight (lbs.)
GSD 10	555	0.5-0.8	64	7	13	22	10,000-20,000
GSD 30	2,110	1.5-2.5	84	8	21	35	24,000-30,000
GSD 40	2,620	2.0-3.0	92	9	26	38	30,000-40,000
GSD 50	3,300	3.0-4.0	99	10	30	44	35,000-65,000
GSD 70	4,430	3.5-4.5	121	12	30	44	65,000-85,000
GSD 90	5,950	4.5-6.5	131	12	34	50	85,000-120,000
GSD 140	7,500	6.5-7.5	140	15	34	50	120,000-170,000
GSD 170	9,600	7.5-10.0	150	16	40	58	170,000-220,000
GSD 250	16,500	8.5-12.0	150	16	40	68	220,000-280,000

*Weight includes mounting bracket and stiff arm.

**Jaw opening varies slightly depending on excavator mounting location.



1

Coupler not included

5

4

3

2

JAW ARMOR
COMPATIBLE

GSD C FEATURES

- 1 The C Series is specifically designed to provide optimal performance with a quick coupler
- 2 Replaceable tine tips are abrasion-resistant Hardox steel
- 3 Boxed-tine construction creates a very high strength and lightweight grapple – each tine will withstand the full breakout force of the excavator
- 4 Recessed welds are protected from wear, increasing grapple life
- 5 Built with Weldom steel for the best combination of structural strength and wear durability

GSD C APPLICATIONS

- Demolition
- Scrap Handling & Compaction
- Rip-rap Handling
- Road Building & Reconstruction
- C&D Sorting
- Land Clearing



STIFF ARM AND MOUNTING PAD

Comes standard with each GSD C

GSD C Model Number	Weight* (lbs.)	Capacity (yd ³)	Jaw Opening** (ins.)	Jaw Closed (ins.)	Moveable Jaw Width (ins.)	Lower Jaw Width (ins.)	Excavator Weight (lbs.)
GSD 30C	2,300	1.5-2.5	78	8	26	41	24,000-30,000
GSD 40C	2,800	2.0-3.0	88	9	30	45	30,000-40,000
GSD 50C	3,700	3.0-4.0	96	10	34	50	35,000-65,000
GSD 70C	4,900	3.5-4.5	118	12	36	52	65,000-85,000
GSD 90C	6,500	4.5-6.5	130	14	40	58	85,000-120,000

*Weight includes mounting bracket and stiff arm.

**Jaw opening varies slightly depending on excavator mounting location.

GSG | GENESIS SCRAP GRAPPLE

GSG APPLICATIONS

- Scrap Handling
- C&D Sorting
- Bulk Material Handling



GSG FEATURES

- 1 Heavy-duty guarding system completely protects cylinders and internal components, removes easily for internal maintenance access
- 2 Reverse-mounted cylinders protect rods from damage
- 3 Large bore hydraulic cylinders maximize clamping force
- 4 High-torque continuous 360° rotation for handling large and uneven loads
- 5 Large diameter hardened steel pins with integrated shear-proof pin retainers
- 6 Identical hardened steel bearings with dust seals at all pivot points
- 7 Long-life, abrasion-resistant steel tips are easily replaced with simple perimeter weld
- 8 All tine styles feature fully boxed construction for strength and durability
- 9 Overall footprint easily fits inside trailers

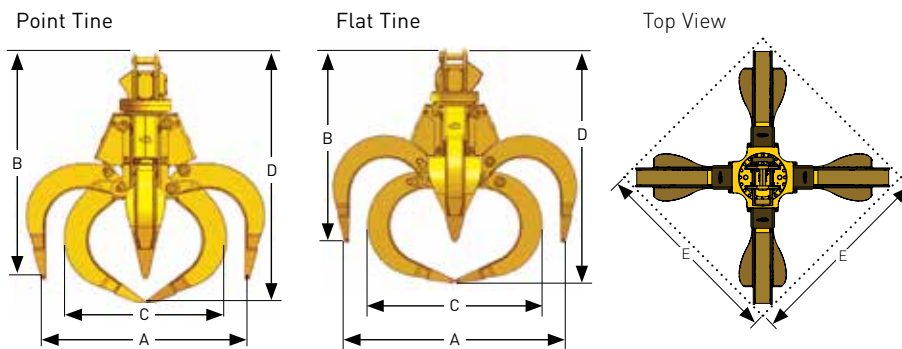


DIAGRAM DIMENSION

GSG Model Number	Capacity (yd ³)	Weight** (lbs.)	Min. Machine Size (mt)	Jaw Open Width (ins.)		Jaw Open Height (ins.)		Jaw Closed Width (ins.)		Jaw Closed Height (ins.)		Footprint (ins.)	
				Flat	Point	Flat	Point	Flat	Point	Flat	Point		
GSG 50	0.50	3,050	20	***	64	***	81	***	52	***	88	***	60
GSG 65	0.65	3,150	20	***	69	***	83	***	54	***	91	***	64
GSG 75	0.75	3,250	20	74	76	***	85	***	59	91	95	***	70
GSG 100	1	3,500	22	79	80	***	90	***	68	93	100	***	73
GSG 100 HD*	1	4,300	25	78	79	77	86	66	63	91	98	71	72
GSG 125	1.25	3,600	22	89	86	***	92	***	71	98	101	***	79
GSG 125 HD*	1.25	4,500	27	85	86	79	88	71	67	95	102	77	78
GSG 150	1.5	4,800	30	91	89	81	94	75	72	100	108	80	81
GSG 200	2	5,000	40	96	95	82	96	78	76	103	112	84	86
GSG 250	2.5	5,700	45	108	105	84	100	86	85	109	118	94	95

*Heavy-duty

**Weight includes yoke.

***Contact your local Genesis Regional Manager for additional information.

REBUILD SERVICES



Complete refurbishment, repair and restoration services extend service life and the return on investment of your attachment

There's bound to be some wear when steel cuts steel or crushes concrete, and purchasing new attachments isn't always necessary or even an option. That's why we offer Genesis Rebuild Services.

Genesis has rebuilt hundreds of attachments that have been quickly repaired and put back to work. And every rebuilt Genesis brand attachment features a six-month warranty on all repairs. Rebuilt competitive tools have a three-month warranty on all repairs.

Extend the life of worn out attachments by bringing them back to factory specs. Rebuild components include:

- Upper and lower jaws
- Cylinder
- Parent material that no longer supports the blades
- Upper and lower jaw knife edges that no longer run parallel to each other
- Main shaft
- Brackets
- Competitive brand attachments

Contact your Genesis Regional Manager for additional Rebuild Services information or visit genesisattachments.com

PARTS

We know our attachments are used in the most extreme conditions and expected to perform day in and day out. And that's why the minute these conditions take their toll, our Parts Department is dedicated to getting you up and running again as quickly as possible. Whether it's making sure your parts inventory is well stocked for maintenance or emergencies, or shipping a part overnight, we are there when you need us. At Genesis, we believe in providing the best possible customer service and are dedicated to your productivity.

SERVICE

Some people call it technical service. Some call it customer support. We just want you to call us with any installation, operation, maintenance or preventative maintenance questions. Call, e-mail, text or send photos. And if we can't solve your problem, we can provide on-site technical support or maintenance at our Superior, Wisconsin manufacturing facility. Whatever the problem, whatever you need, we have a solution.

TECHNICAL SERVICE TRAINING

There's an old saying, "Knowledge is Power." At Genesis, we couldn't agree more. That's why we offer our customers free technical service training at our Superior, Wisconsin facility. Our two-day class covers every aspect of the equipment, including:

- Installation
- Operation
- Maintenance
- Hydraulics and rotation
- Product component breakdowns
- Factory tours of product manufacturing
- Discussions with Genesis personnel

You've purchased the best product on the market. We want you to use it to its fullest potential.

All Genesis attachments are covered by a 12-month, 1,500-hour (whichever occurs first) warranty. Genesis reserves the right to continually make product improvements designed to positively enhance performance.

Patents: genesisattachments.com/patents

The Genesis Product Catalog is published by Genesis Attachments, 1000 Genesis Drive, Superior, WI 54880. Extracts from this literature may be copied or reproduced only with prior approval from the Genesis Marketing Department and if the originator is credited. Genesis' policy is to continually develop and improve products. The company reserves the right to change product detail and technical specifications. We cannot accept any liability for publication errors and omissions.



FIND YOUR LOCAL GENESIS DEALER

Visit the Dealer Locator at genesisattachments.com

WORLD HEADQUARTERS

Genesis Attachments
1000 Genesis Drive
Superior, WI 54880 USA

Toll Free: 888-SHEAR-IT
(888-743-2748)
Phone: 715.395.5252
Fax: 715.395.5255
info@genesisattachments.com

Europe/Africa/Middle East

Genesis GmbH
Teramostrasse 23
87700 Memmingen, Germany

Phone: +49 83 31 9 25 98 0
Fax: +49 83 31 9 25 98 80
genesis-europe.com
info@genesis-europe.com

Asia Pacific Representative Office

24 Upper Serangoon View #12-28
Singapore 534205

Phone: +65 9673 9730
tchoo@genesisattachments.com

Central & South America, The Caribbean

Cra 13A #89-38 / Ofi 613
Bogota, Colombia

Phone: +57 1 610 8160 / 795 8747
contact@themsagroup.com

Brazil

Rua José Alves dos Santos,
281 - Sala 413
São José dos Campos / SP-Brazil

Phone: +55 12 3905 3405
metalamericas@metalamericas.com