

ZW-6 series

HITACHI

Reliable solutions

# ZW220



*Machine representative of global product.  
Options may not be available in all markets.*

## WHEEL LOADER

Model: ZW220-6

Gross engine rated power: 200 hp / 149 kW (ISO14396)

Operating weight: 38,910–39,350 lb (17,650–17,850 kg)

Bucket ISO heaped: 4.2–4.7 yd<sup>3</sup> (3.2–3.6 m<sup>3</sup>)

# ZW220-6 NO COMPROMISE

The latest Hitachi wheel loaders have been developed specifically to meet the demands of the evolving North American construction industry. The ZW220-6 offers exceptional levels of performance without compromising on efficiency, thanks to low levels of fuel consumption.

The new model underlines Hitachi's reputation for high-quality engineering and durable products. The epitome of reliability, the ZW220-6 is also extremely versatile for a variety of industry solutions.



6. FIRST-RATE RELIABILITY



8. DESTINED FOR DURABILITY



10. EXCEPTIONAL VERSATILITY



**12. DEDICATED TO QUALITY**



**14. DRIVEN BY TECHNOLOGY**

*Machine representative of global product.  
Options may not be available in all markets.*

# DEMAND PERFECTION

The ZW220-6 has been designed and built using market-leading technology in Japan. Developed to perfection, with an emphasis on the environment, operator comfort and safety, it responds to customer demands for exceptional productivity at the lowest possible cost of ownership.



**Powerful performance**  
Quick power switch increases engine output when required.



**Industry-leading safety**  
360° visibility from the cab.



**Easy to operate**  
Multifunctional monitor shows information at a glance.



**Smooth operation**  
Ride control minimizes machine pitching.



**Superior comfort**  
Spacious cab with several storage compartments.



**Enhanced design**

Excellent rear view thanks to the curved engine hood.



**Enhanced fuel efficiency**

New Tier 4 Final engine without DPf.



**Low running costs**

7% fuel saving in load and carry operations (6% in V-shaped loading).



**User-friendly**

Effortless control with the optional e-Stick Steering System.



**Convenient access**

Easy-to-open wide engine covers.

*Machine representative of global product. Options may not be available in all markets.*

# FIRST-RATE RELIABILITY

Like all Hitachi wheel loaders, the ZW220-6 is renowned for its reliability to achieve an optimum performance with minimal downtime. It will operate at the highest levels of efficiency on a wide range of job sites, and is easy to maintain thanks to its accessible components.

## Minimal downtime

The ZW220-6 has one battery compartment instead of two, which provides easier access for maintenance and battery replacement. This results in minimal downtime and a high level of accessibility.

## Quick access

The engine covers open fully for convenient access. This helps to ensure routine maintenance is completed quickly to ensure a reliable performance.

## Improved fuel efficiency

The ZW220-6 demonstrates greater fuel efficiency than the previous model during V-shape loading, and load and carry

operations. This results in considerable savings for running costs.

## Easy maintenance

For safer and easier maintenance, the battery disconnect switch is standard. This helps to avoid electrical accidents and retain battery energy during long-term storage.

## Reduced cost

The new Tier 4 Final certified engine does not require a diesel particulate filter, which further reduces fuel consumption and maintenance costs.



Easy access to the engine compartment.



Easy access battery compartment.



New engine reduces fuel consumption.

*Machine representative of global product.  
Options may not be available in all markets.*



Increased lift arm torsion improves productivity.



Optional wide fin radiators enhance durability.

*Machine representative of global product.  
Options may not be available in all markets.*



**i** The final pre-delivery inspection procedure for each Hitachi wheel loader is typical of Hitachi's dedication to manufacturing products of unfailing quality in response to customer needs.



# DESTINED FOR DURABILITY

Hitachi's global reputation for producing robust construction machinery continues with its new medium wheel loaders. Designed and engineered to operate reliably across a wide range of demanding job sites, the ZW220-6 is guaranteed to deliver a durable performance.

### Added protection

The optional belly guard protects the machine powertrain and driveshaft from potential damage caused by materials on the ground.

### Strengthened components

The lift arm torsion of the ZW220-6 has been increased to meet customer demand. This also enhances productivity during lifting operations.

### Durable materials

High-quality radiators improve resistance to corrosion and enhance the overall durability of the ZW220-6 wheel loader.

### Maximum uptime

Optional wide fin radiators (WPFR) are designed with square-shaped instead of triangular-shaped fins to prevent clogging. This enhances the radiator's durability.



The optional belly guard provides added protection.

# EXCEPTIONAL VERSATILITY

The smooth and efficient operation of Hitachi wheel loaders makes them an ideal choice for a wide range of applications. Several features contribute to the overall versatility of the ZW220-6, and bring additional benefits of increased productivity, fuel efficiency and safety.

## Efficient flexibility

The quick power switch increases engine output when more power is instantly required, or when driving uphill.

## Enhanced rear visibility

The muffler and air intake have been repositioned and aligned to improve the rear-view visibility from the cab, enhancing safety on a variety of job sites.

## High productivity

The simultaneous movement of the bucket and lift arm ensures a smooth digging operation. The bucket is prioritized after unloading so that the wheel loader quickly returns to digging, which helps to increase productivity.

## Convenient Storage

The convenient utility space at the rear of the ZW220-6 has been designed to provide sufficient storage for a variety of tools.

## Effective control

To ensure a smooth drive on all kinds of terrain, the ride control feature prevents unnecessary pitching via the movement of lift arm cylinders.



Rear visibility has been enhanced by design modifications.



The ride control feature ensures a smooth travel performance.



The quick power switch increases power when required.

*Machine representative of global product. Options may not be available in all markets.*



*Machine representative of global product.  
Options may not be available in all markets.*



Urea is injected into the exhaust gas to reduce emissions.



Ground level access for easy maintenance.

**i** Hitachi conducts user tests in Japan to assess the features of its wheel loaders. Results have revealed an unrivaled level of control.



# DEDICATED TO QUALITY

Each new Hitachi wheel loader is rigorously tested to ensure it meets the highest possible standards of performance, reliability, comfort and safety. Built using high-quality components, the ZW220-6 is one of the quietest wheel loaders and offers the best all-round visibility in its class.



NO DPF SCR system reduces emissions.

### Reduced emissions

Hitachi has developed a selective catalytic reduction (SCR) system that injects urea into exhaust gas to reduce nitrous oxide from emissions. This cutting-edge technology not only helps the environment, but also complies with Tier 4 Final emission regulations.

### Easy access

The engine air filter has been relocated to the rear of the engine compartment, providing easier access at ground level for maintenance. The urea tank is also positioned for convenience.

### Excellent visibility

The 360° panoramic view from the spacious cab creates a comfortable working environment, and helps to increase safety and productivity. The rear-view camera also contributes to excellent all-around visibility and safety on the job site.

### Improved comfort

Sound insulation has been improved in the cab to significantly reduce noise levels and provide a quieter working environment for operators. The low-noise engine also results in a quieter performance, which makes it suitable for working in urban areas.

# DRIVEN BY TECHNOLOGY

The advanced technology incorporated within the design of the ZW220-6 highlights Hitachi's constant focus on enhancing customer satisfaction. Every component is designed and built to meet the requirements of owners and operators, and the ever-changing needs of the industry.

## **Reduced maintenance**

A new Tier 4 Final certified engine contains a high-volume cooled exhaust gas recirculation (EGR) system, a common rail-type fuel injection system and a diesel oxidation catalyst (DOC). This helps to reduce fuel costs and maintenance requirements.

## **Smaller environmental impact**

The standard auto idle shutdown feature helps to prevent fuel waste, as well as reduce noise levels, exhaust emissions and CO<sub>2</sub> levels of the ZW220-6 medium wheel loader.

## **Optimum performance**

Hitachi ZW-6 wheel loaders are fitted with a multifunctional LCD color monitor that shows useful information at a glance, such as fuel and urea levels, oil temperature and power modes. It ensures an optimum performance and easy maintenance. It also includes the display for the easy-to-use rear-view camera, which enhances visibility for a safe operation.

## **Remote monitoring**

Global e-Service allows ZW220-6 owners to monitor their Hitachi machines remotely via Owner's Site (24/7 online access) and ConSite (an automatic monthly report). These help to maximize efficiency, minimize downtime and improve overall performance.

## **User-friendly operation**

The optional Joystick Steering System enables operators to reach high levels of productivity with effortless steering, and incorporates a number of useful functions.



*Machine representative of global product.  
Options may not be available in all markets.*



The LCD monitor shows the machine's status and settings.



The optional e-Stick Steering System provides exceptional control.



Urea levels can be checked from the cab.

# REDUCING THE TOTAL COST OF OWNERSHIP



Hitachi has created the Support Chain after-sales program to ensure optimum efficiency, as well as minimal downtime, reduced running costs and high resale values.

## **Global e-Service**

Hitachi has developed two remote monitoring systems as part of its Global e-Service online application. Owner's Site and ConSite are an integral part of the wheel loader, which sends operational data daily via GMS to [www.globaleservice.com](http://www.globaleservice.com). This allows immediate access to the Owner's Site, and the vital information that is required for support on job sites.

Comparing the ratio of operating and non-operating hours helps to enhance efficiency. Effective management of maintenance programs helps to maximize availability. Running costs can also be managed by

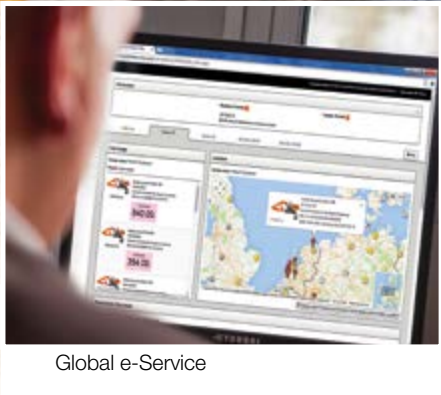
analyzing the fuel consumption. The location and movements of each machine are clearly displayed for essential planning.

An automatic service report – ConSite – sends a monthly email summarizing the information from Global e-Service for each wheel loader. This includes: daily working hours and fuel consumption data; statistics on the operating mode ratio, plus a comparison for fuel consumption/efficiency, and CO<sub>2</sub> emissions.

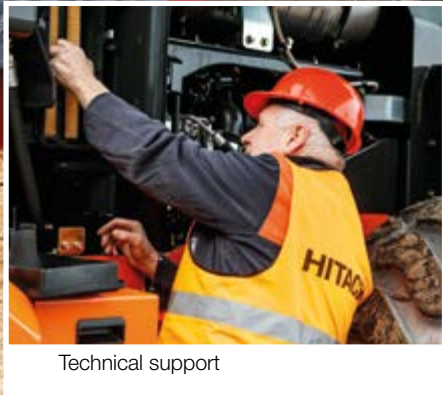
## **Technical support**

Each Hitachi service technician receives full technical training from HCMA in the USA. These sessions provide access to the same technical knowledge available within the Hitachi quality assurance departments and design centers. Technicians combine this global expertise with the local language and culture of the customer to provide the highest level of after-sales support.





Global e-Service



Technical support



Hitachi Parts

## Extended warranty and service contracts

Every new Hitachi ZW-6 wheel loader is covered by a full manufacturer's warranty. For extra protection – due to severe working conditions or to minimize equipment repair costs – Hitachi dealers offer a unique extended warranty called HELP (Hitachi Extended Life Program) and comprehensive service contracts. These can help to optimize the performance of each machine, reduce downtime and ensure higher resale values.

## Parts

Hitachi offers a wide range and a high availability of parts provided by HCMA's US parts warehouse.

- Hitachi Genuine Parts: allow machines to work longer, with lower running and maintenance costs.
- Hitachi Select Parts and Genuine Parts are of proven quality and come with the manufacturer's warranty.

- Performance Parts: to cope with highly demanding conditions, they have been engineered for greater durability, better performance or longer life.
- Genuine Hitachi rebuilt components are available from HCMA's in-house rebuild center and are offered with a standard warranty.

Whatever the choice, the renowned quality of Hitachi construction machinery is assured.



*Machine representative of global product.  
Options may not be available in all markets.*

# BUILDING A BETTER FUTURE

Established in 1910, Hitachi, Ltd. was built upon a founding philosophy of making a positive contribution to society through technology. This is still the inspiration behind the Hitachi group's reliable solutions that answer today's challenges and help to create a better world.

Hitachi, Ltd. is now one of the world's largest corporations, with a vast range of innovative products and services. These have been created to challenge convention, improve social infrastructure and contribute to a sustainable society.

Hitachi Construction Machinery Co., Ltd. (HCM) was founded in 1970 as a subsidiary of Hitachi, Ltd. and has become one of the world's largest construction equipment suppliers. A pioneer in producing hydraulic excavators, HCM also manufactures wheel loaders, rigid dump trucks, crawler cranes and special application machines at state-of-the-art facilities across the globe.

Incorporating advanced technology, Hitachi construction machinery has a reputation for the highest quality standards. Suitable for a wide range of industries, it is always hard at

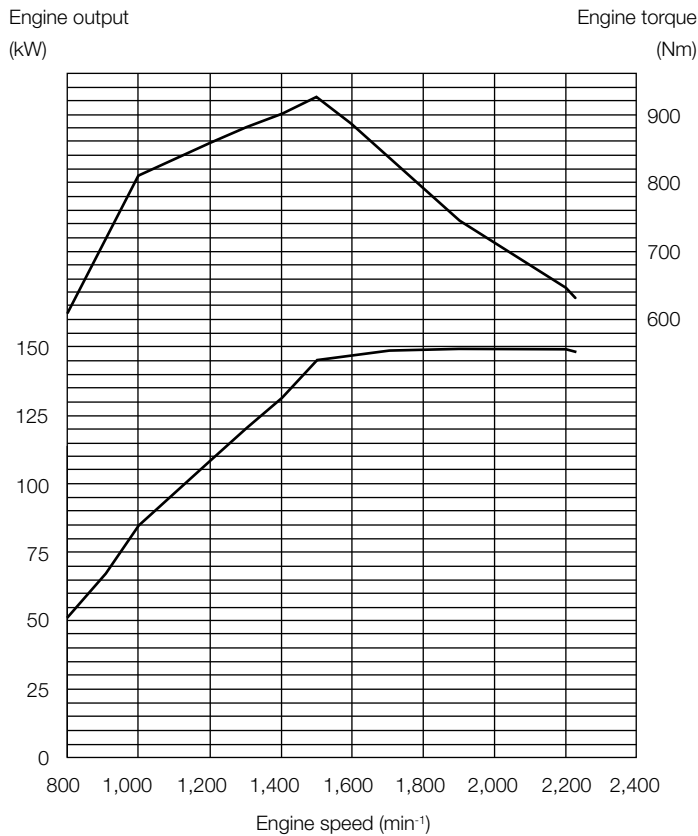
work around the world – helping to create infrastructure for a safe and comfortable way of living, developing natural resources and supporting disaster relief efforts.

Hitachi ZW wheel loaders are renowned for being reliable, durable and versatile – capable of delivering the highest levels of productivity under the most challenging of conditions. They are designed to provide owners with a reduced total cost of ownership, and operators with the ultimate level of comfort and safety.

# SPECIFICATIONS

## ENGINE

Model .....	CUMMINS QSB6.7
Type .....	4-cycle water-cooled, direct injection
Aspiration .....	Turbocharger and intercooled
Aftertreatment .....	DOC and SCR system
No. of cylinders .....	6
Maximum power	
ISO 14396.....	200 hp (149 kW) at 1,600 min <sup>-1</sup> (rpm)
ISO 9249, net .....	194 hp (145 kW) at 1,600 min <sup>-1</sup> (rpm)
Maximum torque, gross ...	929 Nm at 1 500 min <sup>-1</sup> (rpm)
Bore and stroke .....	4.2 in x 4.8 in (107 mm X 124 mm)
Piston displacement .....	408.2 in <sup>3</sup> (6.69 L)
Batteries .....	2 x 12 V
Air cleaner .....	Two element dry type with restriction indicator
Emission .....	Complies with EU stage IV and US EPA Tier 4 Final



## POWERTRAIN

Transmission .....	Torque converter, countershaft type powershift with computer-controlled automatic shift and manual shift features included.
Torque converter .....	Three element, single stage, single phase
Main clutch .....	Wet hydraulic, multi-disc type
Cooling method .....	Forced circulation type
Travel speed* Forward/Reverse	
1st .....	6.2/3.85 km/mph (6.5/4.0 km/mph)
2nd .....	10.6/6.6 km/mph (11.1/6.9 km/mph)
3rd .....	16.0/9.9 km/mph (16.8/10.4 km/mph)
4th .....	23.8 km (14.8 mph)
5th .....	36.0 km (22.4 mph)

\*With 23.5R25 (L3) tires  
( ): Data at Power Mode

## AXLE AND FINAL DRIVE

Drive system .....	Four-wheel drive system
Front & rear axle .....	Semi-floating
Front .....	Fixed to the front frame
Rear .....	Trunnion support
Reduction and differential gear .....	Two stage reduction with limited slip differential
Oscillation angle .....	Total 24° (+12°, -12°)
Final drives .....	Heavy-duty planetary, mounted inboard

## BRAKES

Service brakes .....	Inboard mounted fully hydraulic 4 wheel wet disc brake. Front & rear independent brake circuit
Parking brakes .....	Spring applied, hydraulically released, dry disc type with external output shaft

## STEERING SYSTEM

Type .....	Articulated frame steering
Steering angle .....	Each direction 37°; total 74°
Cylinders .....	Double-acting piston type
No. x Bore x Stroke .....	2 x 2.8 in x 17.4 in (2 x 70 mm x 442 mm)

## HYDRAULIC SYSTEM

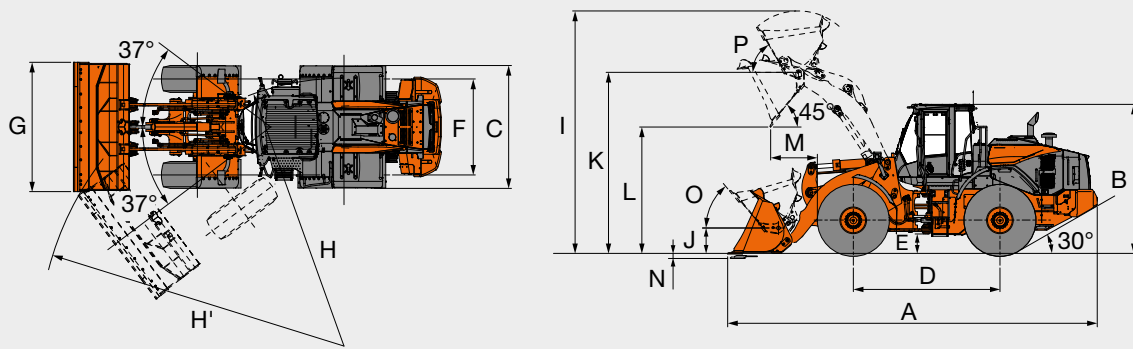
Arm and bucket are controlled by multifunction lever	
Arm controls .....	Four position valve; Raise, hold, lower, float
Bucket controls with automatic bucket return-to-dig control .....	Three position valve; Roll back, hold, dump
Main pump (Serve as steering pump) .....	Variable Displacement Axial Plunger Pump
Maximum flow .....	72.6 gal/min (275 L/min) at 2,200 min <sup>-1</sup> (rpm)
Maximum pressure ...	27.4 MPa
Fan pump .....	Fixed Displacement Gear Pump
Maximum flow .....	16.5 gal/min (62.5 L/min) at 2,200 min <sup>-1</sup> (rpm)
Maximum pressure ...	18.2 MPa
Hydraulic cylinders	
Type .....	Double acting type
No. x Bore x Stroke ...	Arm: 2 x 5.1 in x 34.7 in (2 x 130 mm x 880 mm)
	Bucket: 1 x 6.5 in x 20.1 in (1 x 165 mm x 510 mm)
Filters .....	Full-flow 15 micron return filter in reservoir
Hydraulic cycle times	
Lift arm raise .....	5.9 s (5.6 s)
Lift arm lower .....	3.3 s (3.3 s)
Bucket dump .....	1.6 s (1.5 s)
Total .....	10.8 s (10.4 s)

( ): Data at Power Mode

## SERVICE REFILL CAPACITIES

Fuel tank .....	67.4 gal (255 L)
Engine coolant .....	8.7 gal (33 L)
Engine oil .....	6.6 gal (25 L)
Torque convertor & transmission .....	7.1 gal (27 L)
Front axle differential & wheel hubs .....	8.5 gal (32 L)
Rear axle differential & wheel hubs .....	8.5 gal (32 L)
Hydraulic oil tank .....	30.1 gal (114 L)
DEF/AdBlue® tank .....	6.6 gal (25 L)

## DIMENSIONS & SPECIFICATIONS



Bucket type			Standard arm		High lift arm
			General Purpose		Material Handling
			Bolt-on Cutting Edge	Teeth and Segments	Bolt-on Cutting Edge
			Material Handling	Bolt-on Cutting Edge	
Bucket capacity	ISO heaped	yd <sup>3</sup> (m <sup>3</sup> )	4.2 (3.2)		4.7 (3.6)
	ISO struck	yd <sup>3</sup> (m <sup>3</sup> )	3.6 (2.7)		4.0 (3.1)
A Overall length		ft (mm)	27.3 (8,310)	27.7 (8,430)	27.5 (8,370)
B Overall height		ft (mm)	11.0 (3,375)		
C Width over tires		ft (mm)	9.1 (2,785)		
D Wheel base		ft (mm)	10.9 (3,300)		
E Ground clearance		in (mm)	18 (450)		
F Tread		ft (mm)	7.1 (2,160)		
G Bucket width		ft (mm)	9.6 (2,910)		
H Turning radius (Centerline of outside tire)		ft (mm)	(6,010)		
H' Loader clearance radius, bucket in carry position		ft (mm)	(6,960)	(6,990)	(6,980)
I Overall operating height		ft (mm)	17.1 (5,440)		18.0 (5,510)
J Carry height of bucket pin		ft (mm)	430		
K Height to bucket hinge pin, fully raised		ft (mm)	13.5 (4,090)		14.9 (4,500)
L Dumping clearance 45 degree, full height		ft (mm)	9.5 (2,890)	9.2 (2,810)	9.4 (2,860)
M Reach, 45 degree dump, full height		ft (mm)	3.8 (1,130)	4.0 (1,220)	3.1 (1,170)
N Digging depth (Horizontal digging angle)		in (mm)	3.9 (100)		7.0 (180)
O Max. roll back at carry position		deg	50		
P Roll back angle at full height		deg	60		52
Static tipping load *	Straight	lb (kg)	32,850 (14,900)	32,740 (14,850)	32,580 (14,780)
	Full 37 degree turn	lb (kg)	29,100 (13,200)	29,010 (13,160)	28,860 (13,090)
Breakout force		lb (kN)	34,170 (152)		32,820 (146)
Operating weight *		lb (kg)	38,910 (17,650)	38,980 (17,680)	39,090 (17,730)

Note: All dimensions, weight and performance data based on ISO 6746-1:1987, ISO 7131:2009 and ISO 7546:1983

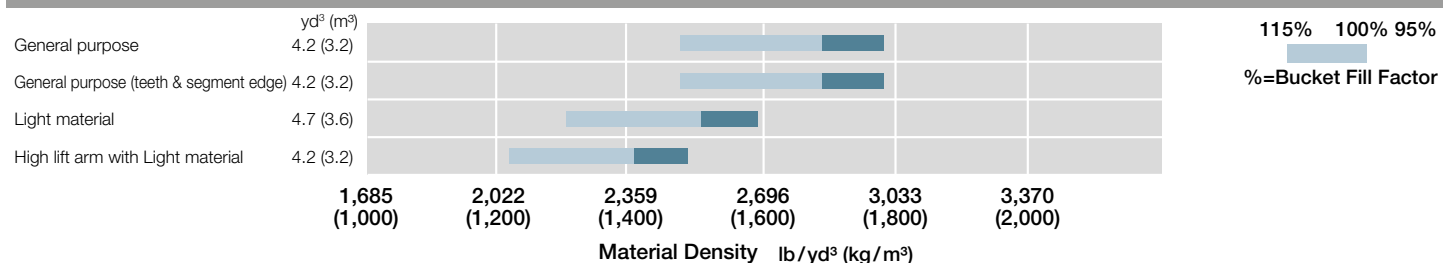
\*: Static tipping load and operating weight marked with\* include 23.5-25-16 (L3) tires (No ballast) with lubricants, full fuel tank and operator.

Machine stability and operating weight depend on counterweight, tire size and other attachments.

## WEIGHT CHANGE

Option item	Operating weight lb (kg)	Tipping load lb (kg)		Overall width in (mm) (outside tire)	Overall height in (mm)	Overall length in (mm)
		Straight	Full turn			
Remove ROPS cab (for transport only)	-1,320 (-600)	-1,010 (-460)	-900 (-410)	±0	-5 (-140)	±0
Install Refuse Counterweight	-550 (-250)	-1,480 (-670)	-1,300 (-590)	±0	±0	±0
Belly guard (transmission)	+200 (+90)	+175 (+80)	+155 (+70)	±0	±0	±0
Tires	23.5R25 (L-3)	+200 (+90)	+150 (+70)	+130 (+60)	±0	±0
	23.5R25 (L-4)	+790 (+360)	+600 (+270)	+540 (+245)	+1 (+30)	±0
	23.5R25 (L-5)	+2,140 (+970)	+1,610 (+730)	+1,460 (+660)	+1.5 (+40)	+1 (+30)
	23.5-25-16PR (L-4)	+970 (+440)	+730 (+330)	+660 (+300)	+1 (+30)	±0
	23.5-25-16PR (L-5)	+2,030 (+920)	+1,540 (+700)	+1,390 (+630)	+1.5 (+40)	+1 (+30)

## BUCKET SELECTION GUIDE



# EQUIPMENT

## STANDARD EQUIPMENT

### ENGINE

Air cleaner, double element
Auto idle shut down
Cold start (intake air heater)
Cooling fan, automatic reversible, swing-out type
Cummins QSB6.7 diesel engine
EGR System
Engine block heater 120V
Fuel filter (Main)
Fuel pre-filter, w/water separator
Rain cap
SCR catalyst and DOC
VGT (variable geometry turbocharger)
Work mode selector

### POWERTRAIN

Brakes, service
Enclosed wet disc
Dual system
Inboard mounted
Brake, parking
Spring applied
Oil pressure released
Dry disc type
Differential, limited slip type (F/R)
Down-shift switch
Drive shafts, low maintenance
F-R direction selector (2-column mounted/console mounted)
1st speed hold switch on side console
Quick Power switch
Transmission, automatic w/load sensing system.
Transmission declutch (3-position L/H/Off)
Transmission mode selection (3-position AUTO1/MAN/AUTO2)
Universal joints, sealed

### HYDRAULIC SYSTEM

Boom kick-out, dual (operator adjustable in cab)
Bucket positioner (horizontal)
Control lever, single, pilot-assisted
Control lever lock (electric)
Control valve, 4-spool
Lift arm
Bucket
QC control (switch)
Auxiliary (optional, lever)
Pump, variable displacement, load-sensing
Ride control w/load sensing valve and automatic shut-off
Quick coupler control lines and controls
Steering, pilot
System; open-center, high-pressure, load-sensing
Valve, anti-drift

### ELECTRICAL

24-volt electrical system
Back-up alarm
Batteries (2), 12V, 1,000 CCA
Battery disconnect switch
Camera, rear-view
Converter, 12V/15 Amp
Horn, dual electric
Instrument panel, LCD, color
Lights:
2 Headlights (halogen)
2 Forward working lights (halogen)
4 Rear working lights (halogen)
2 Stop/tail/backup (LED)
Turn signal w/4-way flashers/marker

### CAB

ROPS cab: enclosed cab with sound suppression, front & rear wipers and washers, two rear view and side mirrors, tinted glass, full view latch-back doors, sliding side windows.
Accessory outlet, 12v
Adjustable armrest/console, (fore/aft sliding)
Air conditioner/heater/pressurizer
AM/FM/WB radio with AUX input
Ashtray
Cab dome lamps (2)
Cigarette lighter, 24V
Coat hook
Cup holder (2)
Floor mat, sweep-out
Prepped for Loadrite Scale
Retractable seat belt (3-inch)
ROPS/FOPS certified
Seat, deluxe heated w/TLV suspension (DLX8500)
Steering column, telescoping and tilting w/quick-release pedal
Steering wheel
Storage box (heated/cooled)
Storage tray
Sun visor

### OTHERS

Articulation locking bar
Counterweight
Drawbar
Fenders, front, w/mudflap
Fenders, rear, deck-type, w/mudflap
Global e-service, telematic monitoring system (GSM-version w/4 yrs. service)
Ladders, inclined
Lifting eyes
Linkage pins, HN bushing
Neutral safety start
Rear grill, hinged
Steps, rear
Vandalism protection
Z-bar loader linkage

### ALARMS, GAUGES, INDICATORS

Alarms (visual & audible)	Aftertreatment device
	Aftertreatment device regeneration system
	Air cleaner element
	Axle oil temperature
	Battery discharge warning
	Brake oil low pressure
	CAN network system
	DEF/AdBlue tank level/quality/system
	Engine oil low pressure
	Engine trouble
	Engine warning
	Fuel filter (water in fuel)
	Hydraulic oil level
	Hydraulic oil temperature
	Main pump oil pressure
Overheat (engine coolant)	
Transmission oil temp	
Transmission warning	
Gauges	DEF/AdBlue tank level
	Engine coolant temperature
	Fuel gauge
	Speedometer
	Tachometer
Indicators	Transmission oil temperature
	Aftertreatment device regeneration
	Air conditioner display
	Boom kick-out, dual
	Cold start
	Control lever lock
	Declutch
	ECO-Operating Status
	Fan reverse rotation
	F-N-R Selection
	F-N-R Switch enable
	High beam
	Parking brake
	Shift hold
	Time/Operating hour/ODO
Transmission mode and status	
Turn signal w/4-way flashers/Marker	
Work light	
Work mode (Normal, Power)	

## OPTIONAL EQUIPMENT

Autolube
Auxiliary hydraulic function lines, lever (std) only
Belly Guard, front chassis, transmission (rear)
Bolt-on cutting edge & segments
Bucket teeth
Counterweight, (solid tire & logging applications)
Dual lever hydraulic control
E-stick steering
Fenders, rear, full w/mudflaps
HID work lights
High lift boom arm
LED work lights
Quick coupler & attachments
Wide fin radiators

Standard and optional equipment may vary by country, so please consult your Hitachi dealer for details.



A series of horizontal lines providing a template for writing a memo.

Hitachi Construction Machinery Co., Ltd. (Hitachi Construction Machinery) was established in 1970, when Hitachi, Ltd. spun off its Construction Machinery Division. Currently, there are 84 companies that comprise the Hitachi Construction Machinery Group providing Reliable solutions for customers in the heavy construction equipment industry. Hitachi Construction Machinery continues to grow as a strong, global, competitive enterprise.

Fast forward to 2010. A joint venture with Hitachi Construction Machinery and Kawasaki Heavy Industries was entered into to further develop the global scope of the wheel loader product line. This relationship combined the huge technological and manufacturing resources of Kawasaki Heavy Industries and Hitachi Construction Machinery Group. This effort has resulted in a very productive, reliable, and cost-effective product.

In 2016 Hitachi Construction Machinery bought 100% of KCM Corporation's stock transitioning to KCMA Corporation. In 2018 Hitachi Construction Machinery took the reins transitioning KCMA Corporation to Hitachi Construction Machinery Loaders America Inc., furthering their commitment to the North American market by introducing the Hitachi brand wheel loader line, offering outstanding parts availability, an unmatched factory component exchange program, customer and dealer training programs, and a wide range of services and programs.

With manufacturing facilities in Banshu, Japan; Ryugasaki, Japan, and Newnan, Ga., Hitachi Construction Machinery Loaders America has the experience and technology to design, engineer, manufacture, and service your next wheel loader. The Hitachi Construction Machinery Loaders America Inc. team is focused on wheel loaders. As a subsidiary of one of the largest construction machinery companies in the world, Hitachi Construction Machinery Loaders America Inc. is securely poised as your go-to source in the North American wheel loader market.



Reliable solutions

## A FULL LINE OF WHEEL LOADERS

- 13 Models
- 30 HP - 531 HP

REPUTATIONS ARE BUILT ON IT

Prior to operating this machine, including satellite communication system, in a country other than a country of its intended use, it may be necessary to make modifications to it so that it complies with the local regulatory standards (including safety standards) and legal requirements of that particular country. Please do not export or operate this machine outside the country of its intended use until such compliance has been confirmed. Please contact your Hitachi dealer in case of questions about compliance.

These specifications are subject to change without notice. Illustrations and photos show the standard models, and may or may not include optional equipment, accessories, and all standard equipment with some differences in color and features. Before use, read and understand the Operator's Manual for proper operation.

Hitachi Construction Machinery Loaders America Inc.  
[www.hitachicm.us](http://www.hitachicm.us)

KL-EN144NA-US

01/2019

Printed in USA