

KOMATSU®

PC78US-10

Tier 4 Final Engine

COMPACT HYDRAULIC EXCAVATOR

PC78US



Photos may include optional equipment.

NET HORSEPOWER

65.5 HP @ 1950 rpm
48.8 kW @ 1950 rpm

OPERATING WEIGHT

17,747 lb
8050 kg

WALK-AROUND

PC78US-10



Photos may include optional equipment.

NET HORSEPOWER

65.5 HP @ 1950 rpm
48.8 kW @ 1950 rpm

OPERATING WEIGHT

17,747 lb
8050 kg



PERFORMANCE AND VERSATILITY

Standard value added features provide operators with flexible jobsite performance.

New engine and hydraulic technology improves productivity by up to 3% and lowers fuel consumption by up to 5%.

A powerful **Komatsu SAA4D95LE-6 engine** provides a net output of 48.8 kW **65.5 HP** (up to 16% more than the previous model). This engine is EPA Tier 4 Final emissions certified.

Komatsu Diesel Oxidation Catalyst (KDOC) reduces particulate matter using passive regeneration 100% of the time.

No DEF or DPF is required.

Variable Flow Turbocharger is designed to provide optimum air flow under all speed and load conditions.

Komatsu's Closed-center Load Sensing System (CLSS) provides quick response and smooth operation to maximize productivity.

Enhanced working modes are designed to match engine speed, pump delivery, and system pressure to the application.

Large LCD color monitor panel:

- 7" high resolution screen
- Provides "Ecology-Guidance" for fuel efficient operation
- Enhanced attachment control

Rearview monitoring system (standard)

Equipment Management Monitoring System (EMMS) continuously monitors machine operation and vital systems to identify machine issues and assist with troubleshooting.

Enhanced working environment

- High back, suspension operator seat
- Integrated ROPS cab design
- Cab meets ISO Level 1 Operator Protective Guard (OPG) top guard
- Aux jack and (2) 12V outlets

Offset boom allows the PC78US-10 to fit in confined spaces at jobsites.

Wide access service doors provide easy access for ground level maintenance.

Standard Auxiliary Piping for Attachments



Operator Identification System can track machine operation for up to 100 operators.

Battery disconnect switch allows a technician to disconnect the power supply before servicing the machine.

Komatsu designed and manufactured components

Convenient access for maintenance and daily checks.

Komatsu Auto Idle Shutdown helps reduce nonproductive engine idle time and reduces operating costs.

Standard 7'7" 2320 mm blade

Standard pattern change valve

Two travel speeds

KOMTRAX® equipped machines can send location, SMR and operation maps to a secure website or smart phone utilizing wireless technology. Machines also relay error codes, cautions, maintenance items, fuel, and much more.

* Thumb is not standard ** All comparisons are to the prior model, unless otherwise stated.

PERFORMANCE FEATURES

Powerful and Smooth, and yet Efficient Work Is Achieved

Increased productivity

The improved vehicle control contributes to increased productivity while maintaining low fuel consumption.

Productivity

up to 3% increase

(Compared to the PC78US-8)

The productivity data is based on in-house test results.

High mobility

The powerful drawbar pull of the PC78US-8 has been further enhanced to two percent greater maximum drawbar pull, providing excellent steering and hill climbing performance.

Maximum drawbar pull

up to 2% increase (Compared to the PC78US-8)

Equipped with swing back prevention valve

The swing motor is equipped with a swing back reduction valve as standard for smooth stop of swing. This feature enables easy positioning of work equipment, which reduces load spilling from the bucket.

Equipped with a Blade as Standard Equipment

A blade for efficient back-filling and leveling work is equipped as standard. The dedicated pump for the blade enables smooth dozing operation.

PC78US-10

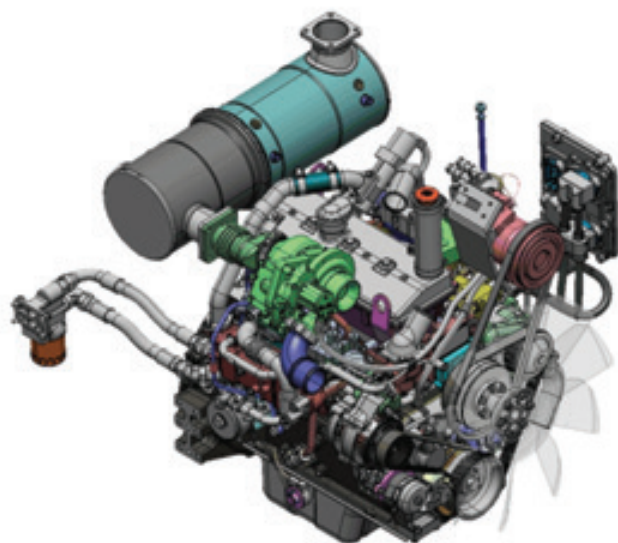
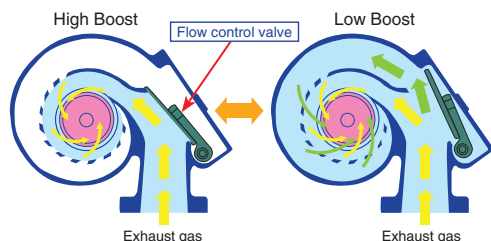


Environment-Friendly Engine

The Komatsu SAA4D95LE-6 engine is EPA Tier 4 Final emissions certified and provides exceptional performance while reducing fuel consumption. Based on Komatsu proprietary technologies developed over many years, this new diesel engine reduces exhaust gas particulate matter (PM) by more than 90% and nitrogen oxide (NOx) by more than 15%, compared to Komatsu Tier 4 Interim levels. Through the in-house development and production of engines, electronics, and hydraulic components, Komatsu has achieved great advancements in technology providing high levels of performance and efficiency in virtually all applications.

Newly designed Variable Flow Turbocharger (VFT)

A newly designed variable flow turbocharger features simple and reliable technology that varies the intake airflow. This provides optimum air flow under all speed and load conditions producing cleaner exhaust gas without sacrificing power and performance.

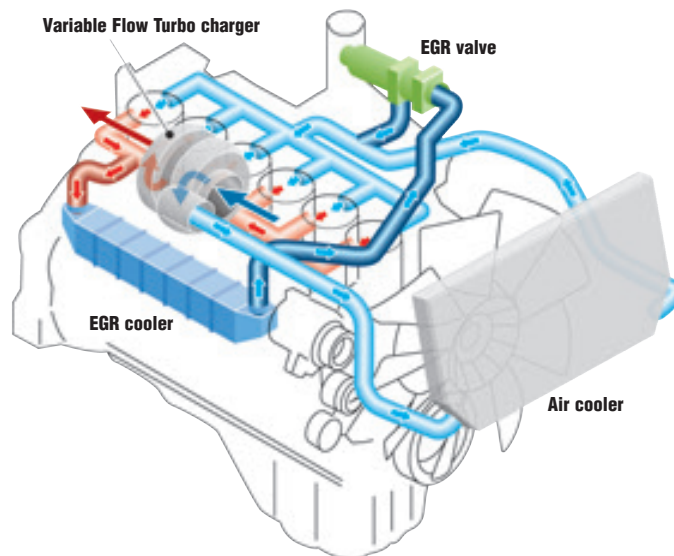


Advanced Electronic Control System

The engine control system has been upgraded to effectively manage a variety of parameters such as the air flow rate, EGR gas flow rate, fuel injection parameters, and after-treatment functions. The new control system also provides enhanced diagnostic capabilities.

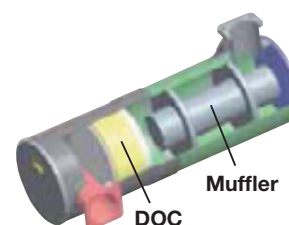
Cooled Exhaust Gas Recirculation (EGR)

Cooled EGR, a technology that has been well proven in Komatsu Tier 3 and 4 Interim engines, reduces NOx emission to meet Tier 4 levels. The EGR system has increased capacity and uses larger and more robust components to ensure reliability for demanding work conditions.



Komatsu Diesel Oxidation Catalyst (KDOC)

The new Komatsu Diesel Oxidation Catalyst (KDOC) has an integrated design that does not interfere with daily operation. This smart and simplified system removes soot using **100% "passive regeneration"** without the need for a Diesel Particulate Filter. The KDOC is a simple design and does not have a scheduled service interval like a DPF and is designed for long life with no scheduled maintenance required. For owners, this means lower owning and operating costs due to less complexity and seamless operation.



PERFORMANCE FEATURES

PC78US-10



Efficient Hydraulic System

The PC78US-10 uses a Closed-center Load Sensing System (CLSS) that improves fuel efficiency and provides quick response to the operator's demands.

The PC78US-10 also introduces new technology to enhance the engine and hydraulic pump control. This total control system matches the engine and hydraulics at the most efficient point under different load conditions. There have also been improvements in the main valve and hydraulic circuit to reduce hydraulic loss, resulting in higher efficiency and lower fuel consumption.

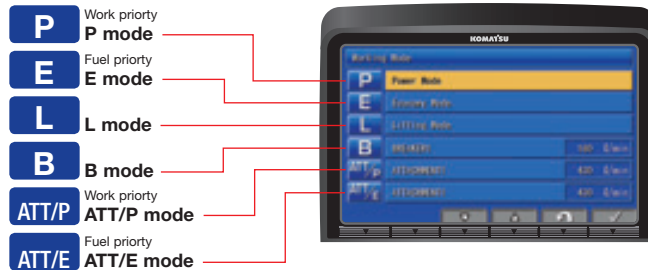
Reduced Up To 5% Fuel consumption*

*vs PC78US-8 Based on typical work pattern collected via KOMTRAX

Working Mode Selection

The PC78US-10 excavator is equipped with six working modes (P, E, L, B, ATT/P and ATT/E). Each mode is designed to match engine speed, pump flow, and system pressure to the application. The PC78US-10 features a new mode (ATT/E) which allows operators to run attachments while in Economy mode.

Working Mode	Application	Advantage
P	Power mode	<ul style="list-style-type: none"> •Maximum production/power •Fast cycle times
E	Economy mode	<ul style="list-style-type: none"> •Good cycle times •Better fuel economy
L	Lifting mode	<ul style="list-style-type: none"> •Increases hydraulic pressure
B	Breaker mode	<ul style="list-style-type: none"> •Optimum engine rpm, hydraulic flow
ATT/P	Attachment Power mode	<ul style="list-style-type: none"> •Optimum engine rpm, hydraulic flow, 2-way •Power mode
ATT/E	Attachment Economy mode	<ul style="list-style-type: none"> •Optimum engine rpm, hydraulic flow, 2-way •Economy mode



OPERATION FEATURES

True Tight Tail Swing For Confined Areas

Short implement swing radius

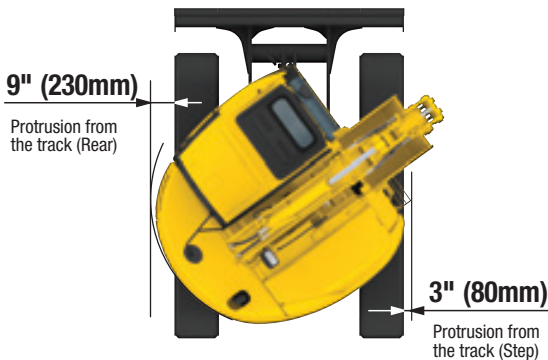
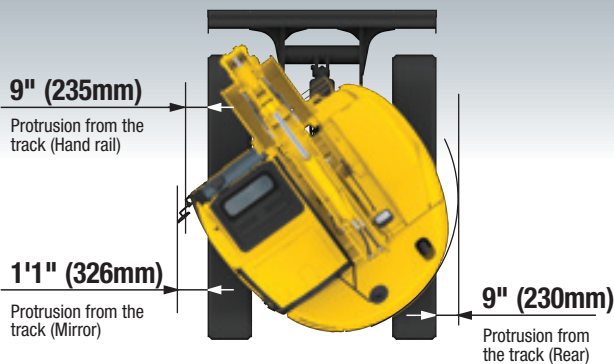
12' 2" (3710 mm) boom raising angle of the PC78US-10 is larger than a conventional profile excavator. The result is reduced front implement swing radius.

Tight tail swing radius

4' 7" 1390 mm short tail swing radius of the PC78US-10 allows the machine to work in more confined areas than a conventional machine.

Round Profile of both Front and Rear Portion of the Upper Structure

Komatsu tighttail hydraulic excavators allows the machine to work in surprisingly tight quarters.



True Tight Tail Performance

The versatile PC78US-10 can fit into areas where a conventional machine cannot. The contoured cab design and convex sliding door allow the cab to swing within the same turning radius as the counterweight.

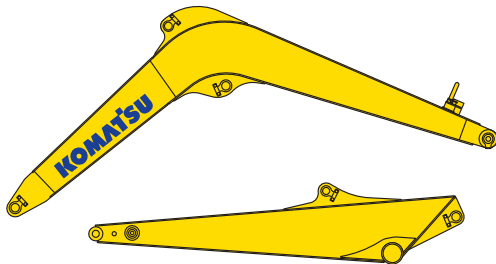
Ideal For Confined Applications

The PC78US-10 is an ideal machine for residential and roadwork. The tight tail design and minimum swing radius makes it possible to work close to buildings, walls and other obstacles.

RELIABILITY FEATURES

High Rigidity Work Equipment

Booms and arms are constructed with thick plates of high tensile strength steel. In addition, these structures are designed with large cross-sectional areas and large one piece castings in the boom foot and the boom tip. The result is work equipment that exhibits long term durability and high resistance to bending and torsional stress.



Komatsu Designed Components

All of the major machine components such as the engine, hydraulic pumps, hydraulic motors, and control valves are exclusively designed and manufactured by Komatsu.

O-Ring Face Seals

Flat face-to-face O-ring seals are used to securely seal hydraulic hose connections.



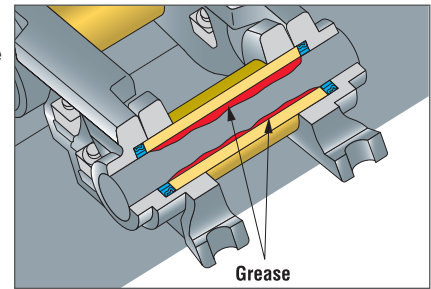
Durable Frame Structure

The revolving frame, center frame, and undercarriage are designed using the most advanced three dimensional CAD and FEM analysis technology.



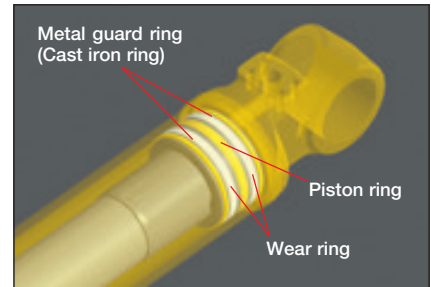
Grease Sealed Track

The PC78US-10 uses grease sealed tracks for extended undercarriage life.



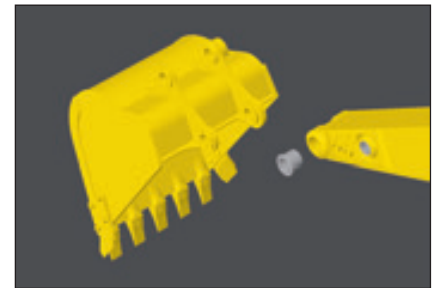
Metal Guard Rings

The PC78US-10 uses metal guard rings to protect all of the hydraulic cylinders and improve long term reliability.



Durable Arm Tip Bushing

The end face of the arm tip bushing provides high resistance to seizure and wear.



WORKING ENVIRONMENT



Newly Designed Wide Spacious Cab

The newly designed wide spacious cab features a high back, fully adjustable seat with a reclining backrest. The console and seat have an integrated design so that they move together and provide additional comfort for the operator.

The new higher capacity operator seat has been enhanced to provide more comfort.

- Integrated Seat
- Console Mounted Arm Rests

Auxiliary Input (MP3 Jack)

By connecting an auxiliary device such as an MP3 player to the auxiliary input, the operator can hear the sound through the speakers installed in the cab.



Pressurized Cab

The air conditioner, air filter, and a higher internal cab air pressure minimize the amount of external dust that enters the cab.

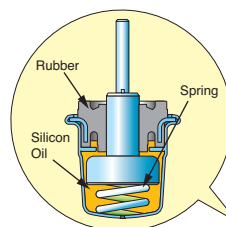
Automatic Air Conditioner

The automatic air conditioner allows the operator to easily and precisely set the cab atmosphere using the large LCD color monitor panel. The bi-level control function improves air flow and keeps the inside of the cab comfortable throughout the year.



Low Vibration with Viscous Cab Mounts

The PC78US-10 uses viscous mounts for the cab that incorporate a longer stroke and the addition of a spring. The cab damper mounting combined with a high rigidity deck reduces vibration at the operator's seat.



WORKING ENVIRONMENT

PC78US-10



Large High Resolution LCD Monitor Panel

A new large, user-friendly, high resolution LCD color monitor enables accurate and smooth work. Screen visibility and resolution are further improved compared to the previous LCD monitor panel. The switches and function keys are easy to operate and provide simple navigation through the monitor screens.

Data is displayed in 25 languages to support operators around the world.

Indicators

- | | |
|----------------------------------|-----------------------------------|
| 1 Auto-decelerator | 5 Hydraulic oil temperature gauge |
| 2 Working mode | 6 Fuel gauge |
| 3 Travel speed | 7 Eco-gauge |
| 4 Engine water temperature gauge | 8 Fuel consumption gauge |
| | 9 Function switches menu |

Basic operation switches

- | | |
|-------------------------|---------------------|
| 1 Auto-decelerator | 4 Buzzer cancel |
| 2 Working mode selector | 5 Wiper |
| 3 Traveling selector | 6 Windshield washer |

Basic operation switches

Function switches

Air conditioner operation switches

Operational Information

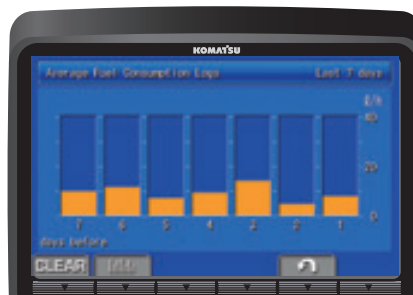
The monitor panel provides operational advice to the operator to help improve machine efficiency and lower fuel consumption. The operator can access the ecology guidance menu to check the Operation Records, Ecology Guidance Records, and Average Fuel Consumption records.

Improved Attachment Control

The PC78US-10 is capable of storing up to ten different attachments in the new monitor panel. The name of each attachment can be changed for better tool management. Hydraulic flow rates can be easily adjusted for one-way and two-way flow attachments.



Ecology Guidance



Average Fuel Consumption Logs



Attachment Setting Screen



Operation Records

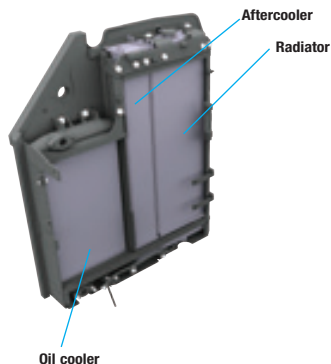


Attachment Settings

MAINTENANCE FEATURES

Easy Access Coolers

The radiator and oil cooler are side-by-side modules which simplifies cleaning, removing, and installing.



Battery Disconnect Switch

A standard battery disconnect switch allows a technician to disconnect the power supply and lock out before servicing the machine.



Large Tool Box

Large tool box provides plenty of space. Grease gun storage space is also provided.



Fan Belt Auto-tensioner

You can service the fan belt easily.



Long Life Oils, Filters

High performance filters are used in the hydraulic circuit and engine. By increasing the oil and filter replacement intervals, maintenance costs can be significantly reduced.



Hydraulic oil filter (Ecology-white element)

Engine oil & Engine oil filter	every 500 hours
Hydraulic oil	every 5000 hours
Hydraulic oil filter	every 1000 hours

Extended Work Equipment Greasing Intervals

Special hard material is used for the work equipment bushings to lengthen the greasing intervals. All work equipment bushing lubrication intervals, except the arm tip and bucket linkage, are 500 hours, reducing maintenance costs.

High Efficiency Fuel Filters

Komatsu's pre-filter and water separator comes with a built in priming pump. A new high efficiency dual element fuel filter provides twice the filtration capacity.



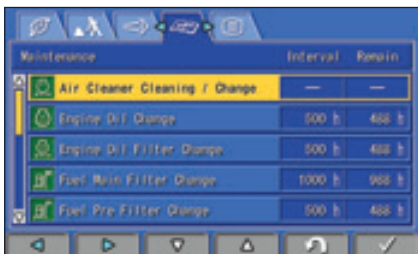
MAINTENANCE FEATURES

Equipment Management Monitoring System (EMMS)

The PC78US-10 features an advanced diagnostic system that continuously monitors the machine's vital systems. EMMS tracks maintenance items, provides advanced troubleshooting tools, reduces diagnostic times, and displays error codes. Through continuous monitoring, the EMMS helps identify issues before they become worse and allows the operator to concentrate on the work at hand.

Maintenance Tracking

When the machine approaches or exceeds the oil and filter replacement interval, the monitor panel will display lights to inform the operator.



Maintenance	Interval	Remain
Air Cleaner Cleaning / Change	—	—
Engine Oil Change	500 h	488 h
Engine Oil Filter Change	500 h	488 h
Fuel Main Filter Change	1000 h	988 h
Fuel Pre Filter Change	500 h	488 h

Abnormalities Display with Code

When an abnormality occurs an error code is displayed on the monitor. When an important code is displayed, a caution lamp blinks and warning buzzer sounds to alert the operator to take action. The monitor also stores a record of abnormalities for more effective troubleshooting.



Advanced Monitoring System

The monitor provides advanced monitoring diagnostics to assist with troubleshooting and reduce costly downtime.



Monitoring / Pre-defined(06114)	
01000 Engine Speed	0 r/min
04107 Coolant Temperature	0 °C
27217 Engine Oil Switch	ON
16400 Intake Temperature	0.0 °C
04401 Hydr. Oil Temperature	0.0 °C
02200 Battery Power Supply	0.0 V



Photos may include optional equipment

GENERAL FEATURES

ROPS Cab Design

The PC78US-10 is equipped with an integrated ROPS cab as standard equipment. The cab also meets OPG Top Guard Level 1 requirements.



Standard Blade

Every PC78US-10 comes standard with a 2320mm 7'7" blade. A wide angle blade is also available as an option.



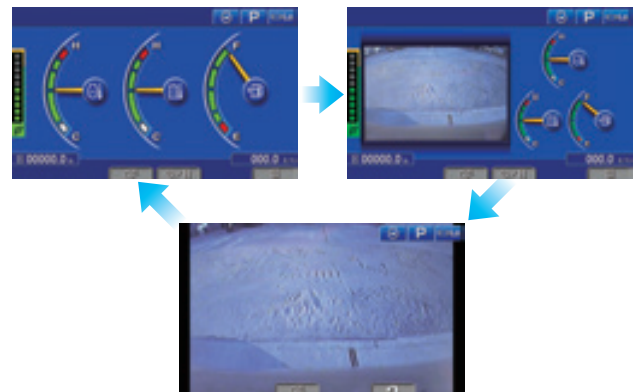
Operator Identification Function

An operator identification ID can be set for each operator, and used to manage operation information of individual machines as KOMTRAX data. Data sent from KOMTRAX can be used to analyze operation status by operator as well as by machine.



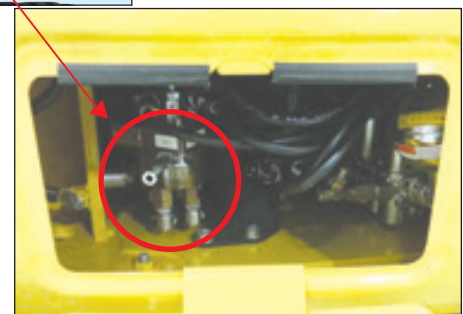
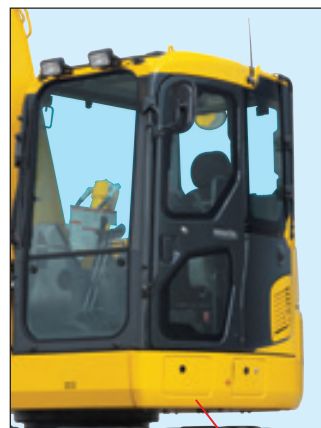
Rear View Monitoring System

The operator can view the rear of the machine with a color monitor screen. The main screen display mode can be changed by pressing the F3 key.



Pattern Change Valve Standard

A pattern change valve is conveniently located below the cab, making switching from excavator controls to backhoe controls quick and easy.



Komatsu CARE – Complimentary Scheduled Maintenance

- PM services for the earlier of 3 years / 2000 hours
- Performed by factory certified technicians
- Komatsu Genuine parts and fluids
- Significantly lowers your cost of ownership while maintaining high uptime and reliability
- Increases resale value and provides detailed maintenance records
- Extended PM services can be purchased beyond the complimentary period to provide additional peace of mind and maximize uptime



Komatsu CARE – Extended Coverage

- Extended Coverage can provide peace of mind by protecting customers from unplanned expenses that effect cash flow
- Purchasing extended coverage locks-in the cost of covered parts and labor for the coverage period and helps turn these into fixed costs



Komatsu Parts Support

- 24/7/365 to fulfill your parts needs
- 9 parts Distribution Centers strategically located across the U.S. and Canada
- Distributor network of more than 300 locations across U.S. and Canada to serve you
- Online part ordering through Komatsu eParts
- Remanufactured components with same-as-new warranties at a significant cost reduction



Komatsu Oil and Wear Analysis (KOWA)

- KOWA detects fuel dilution, coolant leaks, and measures wear metals
- Proactively maintain your equipment
- Maximize availability and performance
- Can identify potential problems before they lead to major repairs
- Reduce life cycle cost by extending component life

KOMTRAX EQUIPMENT MONITORING

GET THE WHOLE STORY WITH
KOMTRAX[®]

✓ WHAT

- KOMTRAX is Komatsu's remote equipment monitoring and management system
- KOMTRAX **continuously monitors and records** machine health and operational data
- Information such as fuel consumption, utilization, and a detailed history **lowering owning and operating cost**

✓ WHO

- KOMTRAX is **standard** equipment on all Komatsu construction products

✓ WHEN

- Know when your machines are **running or idling** and make decisions that will improve your fleet utilization
- Detailed movement records ensure you know when and where your equipment is moved
- Up to date records allow you to **know when maintenance is due** and help you plan for future maintenance needs

✓ WHERE

- KOMTRAX data **can be accessed virtually anywhere** through your computer, the web or your smart phone
- Automatic alerts keep fleet managers up to date on the latest machine notifications

✓ WHY

- Knowledge is power - **make informed decisions** to manage your fleet better
- Knowing your idle time and fuel consumption will help maximize your machine efficiency
- **Take control of your equipment** - any time, anywhere



KOMTRAX[®]

For construction and compact equipment.

KOMTRAX Plus[™]

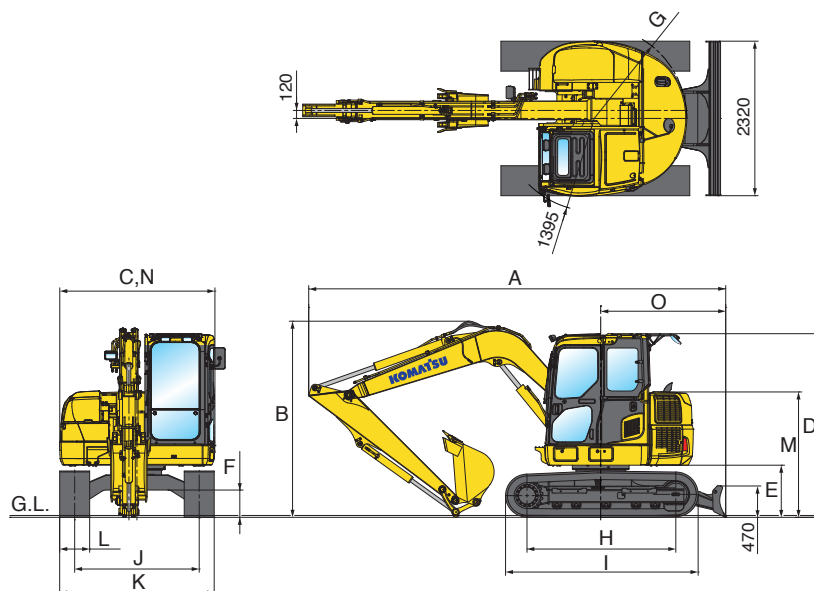
For production and mining class machines.



DIMENSIONS

	Boom length	2250 mm	7'5"
A	Overall length	6270 mm	20'7"
B	Overall height (to top of boom)	2945 mm	9'8"
C	Overall width	2330 mm	7'8"
D	Overall height (to top of cab)*	2760 mm	9'1"
E	Ground clearance, counterweight	785 mm	2'7"
F	Ground clearance, minimum	410 mm	1'4"
G	Tail swing radius	1390 mm	4'7"
H	Track length on ground	2235 mm	7'4"
I	Track length*	2890 mm	9'6"
J	Track gauge	1870 mm	6'2"
K	Width of crawler	2320 mm	7'7"
L	Shoe width	450 mm	1'6"
M	Machine engine hood height	1885 mm	6'2"
N	Machine cab width	2330 mm	7'8"
O	Distance, swing center to rear end	1885 mm	6'2"

* : Dimension of the machine with the triple grouser shoes.



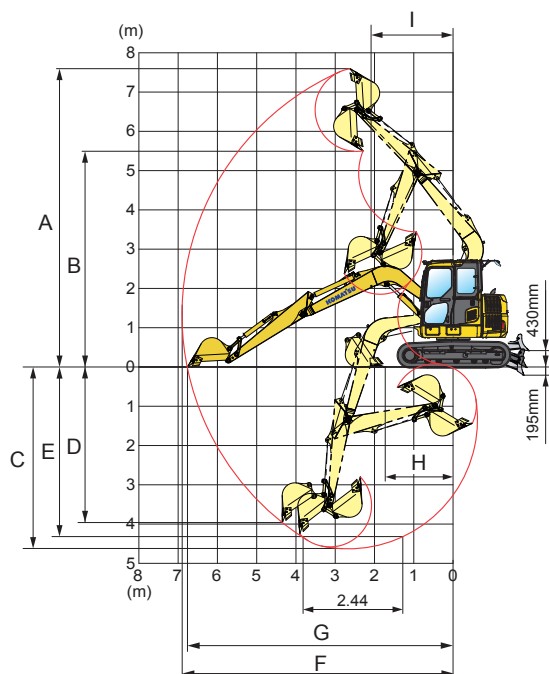
BACKHOE BUCKET, ARM AND BOOM COMBINATIONS

Bucket Capacity (heaped)				Width				Weight		Number of Teeth	Arm Length 2250 mm (7'5')
SAE, PCSA		CECE		Without Side Cutters		With Side Cutters		With Side Cutters			
0.09 m ³	0.12 yd³	0.08 m ³	0.10 yd³	350 mm	13.7"	450 mm	17.7"	145 kg	319.7 lb	3	○
0.12 m ³	0.16 yd³	0.11 m ³	0.14 yd³	450 mm	17.7"	550 mm	21.7"	160 kg	352.7 lb	3	○
0.20 m ³	0.26 yd³	0.18 m ³	0.24 yd³	550 mm	21.7"	650 mm	25.6"	185 kg	407.9 lb	3	○
0.28 m ³	0.37 yd³	0.25 m ³	0.33 yd³	650 mm	25.6"	750 mm	29.5"	210 kg	463.0 lb	4	X
0.34 m ³	0.44 yd³	0.30 m ³	0.39 yd³	755 mm	29.7"	NA	25.6"	210 kg	463.0 lb	4	X

○ - General digging □ - Light-duty operation X - Not available



WORKING RANGE



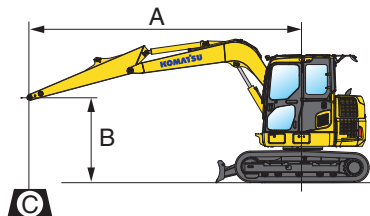
	Boom Length	3710 mm	12'2"
	Arm Length	2250 mm	7'5"
A	Maximum digging height	7650 mm	25'1"
B	Maximum dumping height	5550 mm	18'3"
C	Maximum digging depth	4660 mm	15'3"
D	Maximum vertical wall digging depth	3980 mm	13'1"
E	Max. digging depth of cut for 8' mm level	4380 mm	14'4"
F	Maximum digging reach	6920 mm	22'8"
G	Maximum digging reach at ground	6780 mm	22'3"
H	Minimum digging reach at ground	1710 mm	5'7"
I	Minimum swing radius	2050 mm	6'9"
SAE rating	Bucket digging force	53.3 kN	
	Arm crowd force	5440 kgf / 11,982 lb	
		33.3 kN	
ISO rating	Bucket digging force	61.3 kN	
	Arm crowd force	6250 kgf / 13,780 lb	
		34.5 kN	
		3520 kgf / 7,756 lb	

with road liner

LIFT CAPACITIES



LIFTING CAPACITY WITH LIFTING MODE



- A: Reach from swing center
- B: Bucket hook height
- C: Lifting capacity
- Cf: Rating over front
- Cs: Rating over side
- ⊗: Rating at maximum reach

- Conditions :
- 3710 mm 12' 2" one-piece boom
 - No bucket
 - Blade on ground

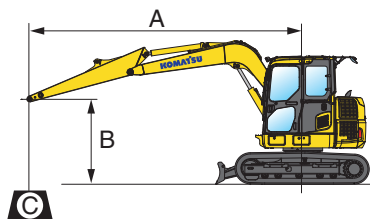
Arm: 2250 mm 7'5" (with ATT piping) Shoes: 450 mm 18" Road Liner Unit: kg lb

B \ A	1.5 m 4'11"		3.0 m 10'		4.5 m 14'9"		⊗ MAX	
	Cf	Cs	Cf	Cs	Cf	Cs	Cf	Cs
5 m 16' 5"							* 1820 * 4020	1570 3470
3 m 10'			* 2260 * 4980	* 2260 * 4980	* 1870 * 4130	1550 3420	* 1700 * 3760	1100 2440
0 m 0'			* 3510 * 7750	2460 5420	* 2290 * 5060	1400 3090	* 1750 * 3870	1010 2240
-2.0 m 6' 7"	* 4490 * 9900	* 4490 * 9900	* 3040 * 6720	2410 5320	* 1940 * 4290	1370 3030	* 1720 * 3790	1260 2790

*Load is limited by hydraulic capacity rather than tipping. Ratings are based on ISO standard No. 10567. Rated loads do not exceed 87% of hydraulic lift capacity or 75% of tipping load.



LIFTING CAPACITY WITH LIFTING MODE



- A: Reach from swing center
- B: Bucket hook height
- C: Lifting capacity
- Cf: Rating over front
- Cs: Rating over side
- ⊗: Rating at maximum reach

- Conditions :
- 3710 mm 12' 2" one-piece boom
 - No bucket
 - Blade on ground

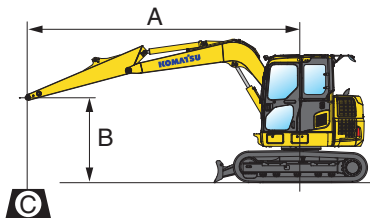
Arm: 2250 mm 7'5" (with ATT piping) Shoes: 450 mm 18" Rubber Shoe Unit: kg lb

B \ A	1.5 m 4'11"		3.0 m 10'		4.5 m 14'9"		⊗ MAX	
	Cf	Cs	Cf	Cs	Cf	Cs	Cf	Cs
5 m 16' 5"							* 1820 * 4020	1530 3380
3 m 10'			* 2260 * 4980	* 2260 * 4980	* 1870 * 4130	1510 3330	* 1700 * 3760	1070 2370
0 m 0'			* 3510 * 7750	2380 5260	* 2290 * 5060	1350 2990	* 1750 * 3870	980 2170
-2.0 m 6' 7"	* 4490 * 9900	* 4490 * 9900	* 3040 * 6720	2340 5150	* 1940 * 4290	1330 2940	* 1720 * 3790	1220 2700

*Load is limited by hydraulic capacity rather than tipping. Ratings are based on ISO standard No. 10567. Rated loads do not exceed 87% of hydraulic lift capacity or 75% of tipping load.



LIFTING CAPACITY WITH LIFTING MODE



- A: Reach from swing center
- B: Bucket hook height
- C: Lifting capacity
- Cf: Rating over front
- Cs: Rating over side
- ⊗: Rating at maximum reach

- Conditions :
- 3405 mm 11' 2" one-piece boom
 - No bucket
 - Blade off ground

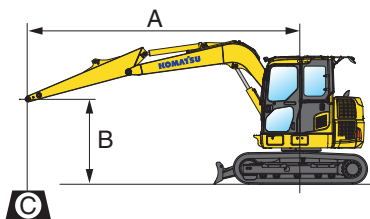
Arm: 2250 mm 7'5" (with ATT piping) Shoes: 450 mm 18" Road Liner Unit: kg lb

B \ A	1.5 m 4'11"		3.0 m 10'		4.5 m 14'9"		⊗ MAX	
	Cf	Cs	Cf	Cs	Cf	Cs	Cf	Cs
5 m 16' 5"							* 1820 * 4020	1570 3470
3 m 10'			* 2260 * 4980	* 2260 * 4980	1830 4030	1550 3420	1290 2860	1100 2440
0 m 0'			3050 6730	2460 5420	1670 3680	1400 3090	1200 2640	1010 2240
-2.0 m 6' 7"	* 4490 * 9900	* 4490 * 9900	3000 6610	2410 5320	1640 3620	1370 3030	1500 3320	1260 2790

*Load is limited by hydraulic capacity rather than tipping. Ratings are based on ISO standard No. 10567. Rated loads do not exceed 87% of hydraulic lift capacity or 75% of tipping load.



LIFTING CAPACITY WITH LIFTING MODE



- A: Reach from swing center
- B: Bucket hook height
- C: Lifting capacity
- Cf: Rating over front
- Cs: Rating over side
- ⊗: Rating at maximum reach

- Conditions :
- 3405 mm 11' 2" one-piece boom
 - No bucket
 - Blade off ground

Arm: 2250 mm 7'5" (with ATT piping) Shoes: 450 mm 18" Rubber Shoe Unit: kg lb

B \ A	1.5 m 4'11"		3.0 m 10'		4.5 m 14'9"		⊗ MAX	
	Cf	Cs	Cf	Cs	Cf	Cs	Cf	Cs
5 m 16' 5"							1800 3980	1530 3380
3 m 10'			* 2260 * 4980	* 2260 * 4980	1780 3930	1510 3330	1260 2780	1070 2370
0 m 0'			2960 6540	2380 5260	1620 3570	1350 2990	1160 2570	980 2170
-2.0 m 6' 7"	* 4490 * 9900	* 4490 * 9900	2910 6420	2340 5150	1590 3510	1330 2940	1460 3220	1220 2700

*Load is limited by hydraulic capacity rather than tipping. Ratings are based on ISO standard No. 10567. Rated loads do not exceed 87% of hydraulic lift capacity or 75% of tipping load.



STANDARD EQUIPMENT

- 2320 mm **7'8"** blade
- Alternator, 24 Ampere, 60V
- AM/FM radio
- Automatic engine warm-up system
- Automatic air conditioner/heater
- Auxiliary input (3.5mm jack)
- Battery disconnect switch
- Converter, (2) x 12V
- Counterweight, 490 kg **1,080 lb**
- Dry type air cleaner, double element
- Electric horn
- EMMS monitoring system
- Engine, Komatsu SAA4D95LE-6
- Engine overheat prevention system
- Extended work equipment grease interval
- Fan guard structure
- Fuel system pre-cleaner 10 micron
- Hydraulic control unit, 1 actuator
- Hydraulic track adjusters
- KOMTRAX®
- Large LCD color monitor, high resolution
- Lock lever
- Mirrors, (LH and RH)
- Operator Protective Top Guard (OPG), Level 1
- Pattern change valve (ISO to BH control)
- PPC hydraulic control system
- Pump/engine room partition cover
- Radiator and oil cooler dustproof net
- Rear reflectors
- Rearview monitoring system (1 camera)
- Revolving frame undercovers
- ROPS cab
- Seat belt, retractable, 76mm **3"**
- Seat belt indicator
- Secondary engine shutoff switch
- Service valve
- Skylight
- Slip resistant foot plates
- Starter motor, 4.5kW
- Suction fan
- Thermal and fan guards
- Travel alarm
- Working lights, 2 cab/1 boom LH
- Working mode selection system



OPTIONAL EQUIPMENT

- Arms
 - 2250 mm **7'5"** arm assembly
- Boom
 - 3710 mm **12'2"** arm assembly
- Shoes, road liner, 450 mm **18"**
- Shoes, triple grouser, 450 mm **18"**
- Shoes, triple grouser, 600 mm **24"**
- Shoes, rubber shoe, 600 mm **24"**
- Track roller guard
- Blade assembly 2330 mm **7'8"**
- Wide blade 2470 mm **8'1"** (requires 600 mm **24"** shoes)



ATTACHMENT OPTIONS

- Hydraulic couplers

For a complete list of available attachments, please contact your local Komatsu distributor.



AESS877-02

©2015 Komatsu America Corp.

Printed in USA

AD05(3K)OTP

05/15 (EV-1)

KOMATSU®

Note: All comparisons and claims of improved performance made herein are made with respect to the prior Komatsu model unless otherwise specifically stated.

www.komatsuamerica.com

Komatsu America Corp. is an authorized licensee of Komatsu Ltd. Materials and specifications are subject to change without notice

KOMATSU®, Komatsu Care® and KOMTRAX® are registered trademarks of Komatsu Ltd.

All other trademarks and service marks used herein are the property of Komatsu Ltd., Komatsu America Corp. or their respective owners or licensees.