

# KOMATSU®

**WA380-5 WA400-5  
WA450-5 WA480-5**

NET HORSEPOWER  
140 - 202 kW  
187 - 271 HP

OPERATING WEIGHT  
20241 - 25944 kg  
44,623 - 57,197 lb

BUCKET CAPACITY  
4.6 m<sup>3</sup> - 7.1 m<sup>3</sup>  
6.0 - 9.25 yd<sup>3</sup>

**Waste  
Handlers**

WASTE HANDLERS



Photos may include optional equipment.

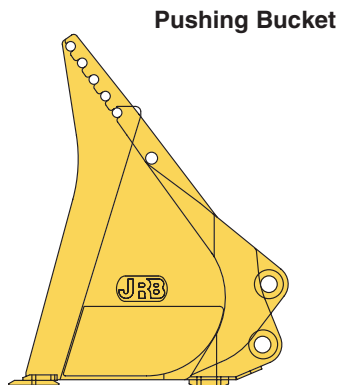
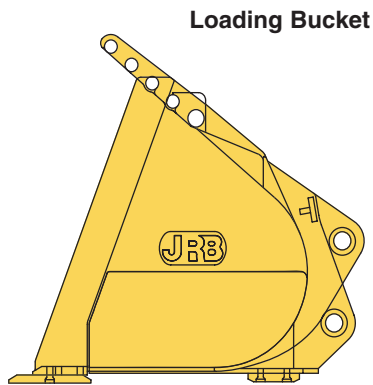
**GALEO**

# WALK-AROUND

## Waste Transfer Station Loaders

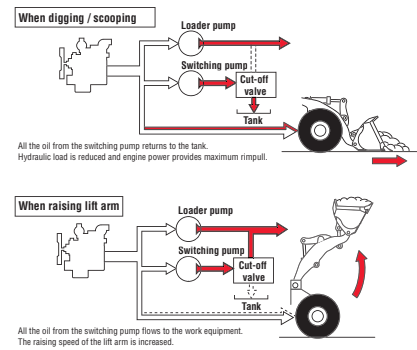
The Komatsu-integrated design found in the line of Mid-size loaders offers class leading value, reliability, and versatility. Hydraulics, power train, frame, and all other major components are engineered and manufactured by Komatsu. You get a machine whose components are designed to work together for higher productivity and reliability, and more versatility. Now add the Komatsu designed and factory installed waste transfer station package with guarding specifically matched to the loader and the application and you have a loader which stays working longer for increased productivity.

**Bucket Options** Choice of two designs optimized for either loading or pushing and loading waste quickly, efficiently, and safely. These buckets feature high strength steel, a spill guard designed for maximum visibility, a visual bucket level indicator and accept Komatsu standard bolt-on cutting edges and skid shoes



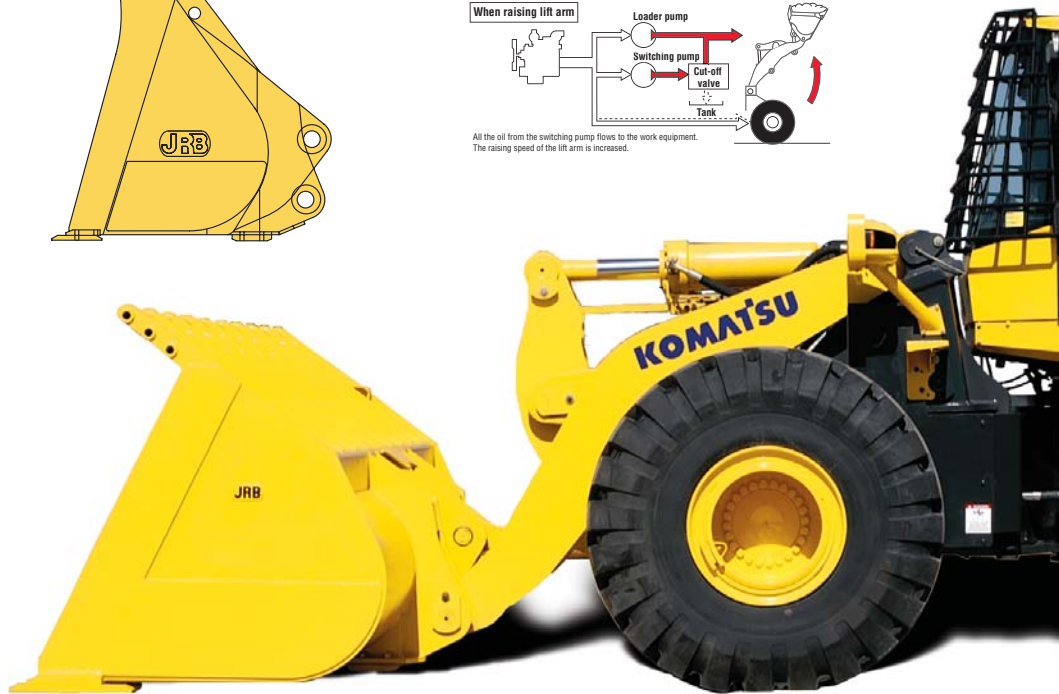
## Fast Boom-Raise Time

Komatsu's automatic dual-speed hydraulic system provides one of the fastest boom speeds in its class, which increases operational efficiency and productivity



## Two Engine Power Modes

Two selectable engine-operating modes (Normal and Power) are available. Normal Mode provides maximum fuel efficiency, and minimizes tire wear in most transfer station conditions. Power Mode provides maximum power output for increased productivity



**Steering Angle** Komatsu's 40 degree steering angle provides one of the smallest turning circles in its class for increased operational efficiency in confined spaces

**NET HORSEPOWER**

140 – 202 kW

187 – 271 HP

**OPERATING WEIGHT**

20241 - 25944 kg

44,623 – 57,197 lb

**BUCKET CAPACITY**

4.6 - 7.1 m<sup>3</sup>

6.0 – 9.25 yd<sup>3</sup>

**Pressurized cab** with air-conditioning (standard) keeps debris out. Two-tier cab filtration system not only cleans the incoming air but the air recycled inside the cab. Filters are easily removed for cleaning or replacement

**Full side opening gull-wing engine doors.**

Ground level engine service and daily service checks are made easy with the gas spring assisted side opening gull-wing doors

**Swing-Out Coolers**

Swing out air-to-air and oil coolers along with the swing-up rear grill and bottom flush-out gate allow the operator to easily clean the radiator system in adverse operating conditions

**High-Rigidity Frames**

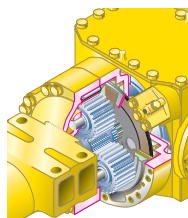
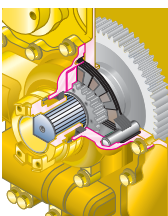
The front and rear frames along with the loader linkage have high rigidity to withstand repetitive twisting and bending loads. Both the upper and lower center pivot bearings use tapered roller bearings for increased durability



Photos may include optional equipment.



**Maintenance-free** fully hydraulic wet multi-disc service and spring applied, hydraulically released wet multi-disc parking brakes results in lower maintenance cost and higher reliability



**Komatsu's highly productive, innovative technology, environmentally friendly machines built for the 21st century.**



## WASTE SPECIFIC GUARDING FEATURES

*By protecting exposed components, reducing debris entry, and making it easy to clean and service, the Komatsu loader stays working longer for increased productivity.*

### Standard Reversible Hydraulic Fan

- Mounted to the rear of the radiator core, the blades pull the air through the core rather than push it, virtually eliminating debris blasting on the core surface
- Thermatically controlled, the fan turns at a high speed only when maximum cooling is required, greatly reducing the debris collection on the inlet screens during normal daily operations
- Timer controlled forward and reverse intervals allow the operator to concentrate on productivity while the computer cleans the radiator on a regular interval. Also features a manual override switch



### Heavy-Duty Head Light and Tail Light Guards

Headlights are moved inward and metal guarding protects the headlights and tail lights from debris that may break or damage the lenses.



### Radiator Air Inlet Protection

Screening over the air entry locations limits debris entry. Plus, additional screened air inlets on the top and side of the hood more than doubles the area for air to enter. The additional openings slow the air velocity passing through the debris screens reducing debris sticking. A flexible rubber mat located below the engine restricts debris entry from below.



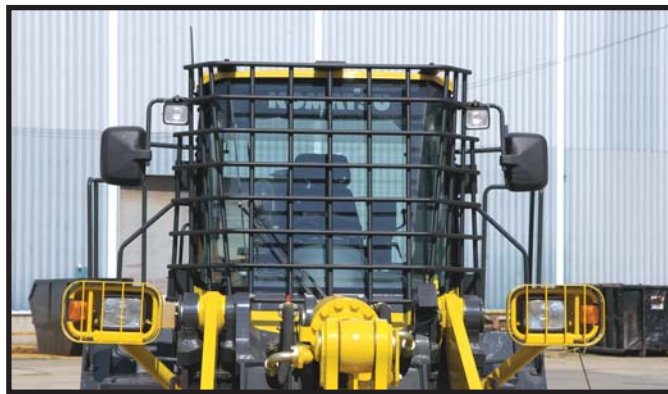
### Heavy-Duty Cab Ladder

New parallelogram ladder mount moves the new heavy-duty ladder closer to the side of the machine reducing the possibility for damage. Should the ladder strike an obstacle during operation, the parallelogram mount allows the ladder to pivot towards the frame reducing potential damage. Rubber belting the lower step increases durability.



### Centrifugal Air Pre-Cleaner

Donaldson and Turbo II brand pre-cleaners are available for increased purification of the engine inlet air.



### Windshield Guard

Designed to maximize operator visibility while minimizing glass breakage.



### Comforts of Home

The large cab allows room for a large lunch box holder, a variety of cup and bottle holders, and a hot/cold box storage area. Air conditioning and optional AM/FM cassette system create a comfortable and controlled work environment.

Additional cab features include the following

- Two speed Joystick steering (optional) allows the operator to change the articulation speed to match the operating conditions. The control lever also allows the operator to select loader direction and speed ranges
- Low operator noise level leads the industry at 71dB (A)
- Air suspension seat reduces fatigue and increases productivity
- Large cab glass area provides the best visibility in its class, for increased operational efficiency and productivity
- Speed limiter. Limits travel speed to 3rd speed

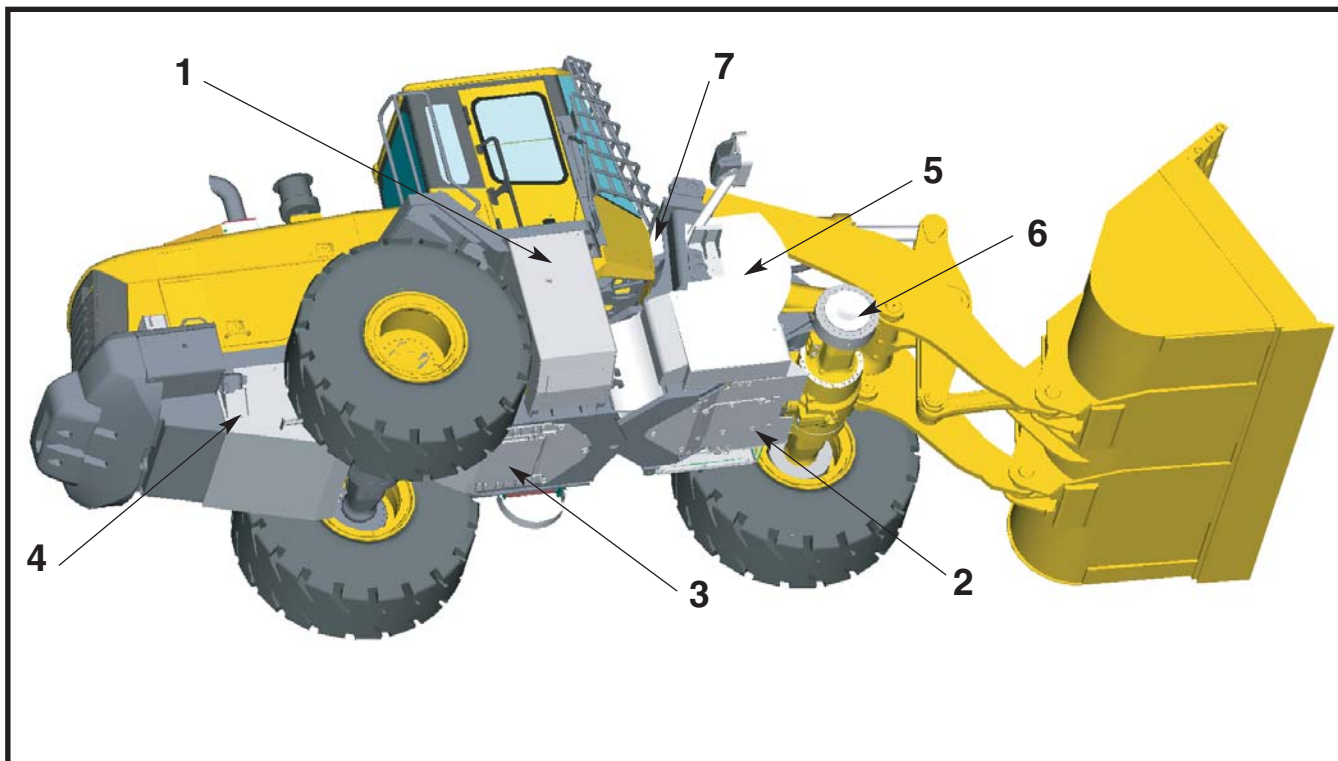


### Center Hinge Guards

Flexible rubber belting protects and keeps debris away from the components running through the center hinge area and openings in the front and rear frames.



# GUARDING FEATURES

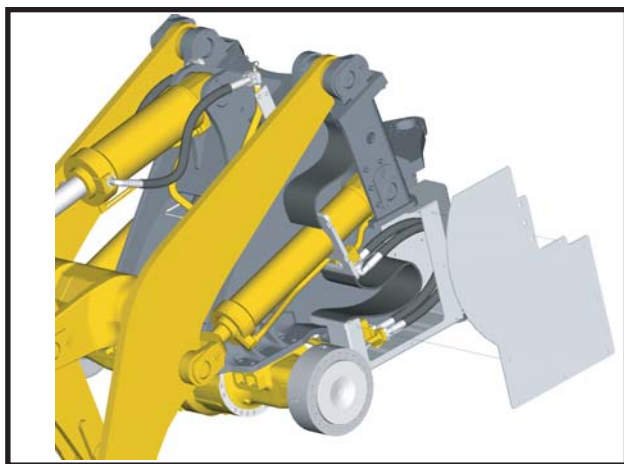


## 1. Hydraulic Tank Guard

Provides additional protection from damage by covering the front, sides, and bottom of the tank. Bolt-on cover allows easy access for cleaning and maintenance.

## 2. Front Frame Guard

Protects and keeps debris away from the components located within the front frame. Bolt-on hinged cover allows easy access for cleaning and maintenance.



## 5. Boom Cylinder and Hose Guard

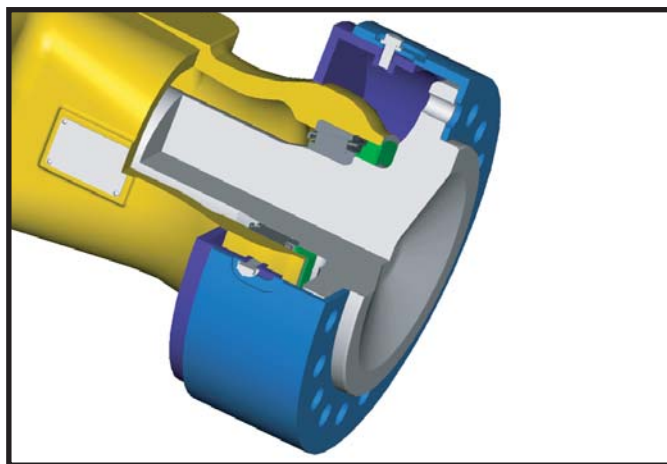
Box-type steel structure prevents debris from reaching the hoses and tubes from the bottom and side. Flexible rubber belting protects the boom and frame area from damage caused by debris entering from the front.

## 3. Powertrain Bottom Guard

Protects and keeps debris away from the components located within the rear frame. Bolt-on hinged cover allows easy access for cleaning and maintenance.

## 4. Fuel Tank Guard

Protects and keeps debris away from the fuel tank. Bolt-on covers allow easy access for cleaning and maintenance.



## 6. Axle Seal Guards

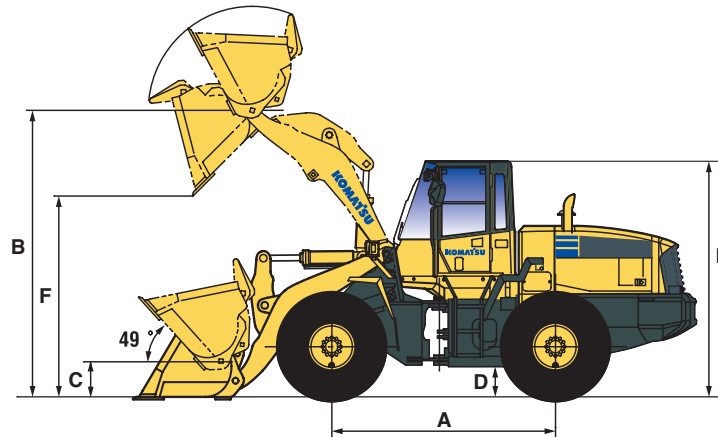
Protects the axle seal should material wrap around the axle during operation.

## 7. Front Frame Top Guard

Helps keep debris out of the front frame.

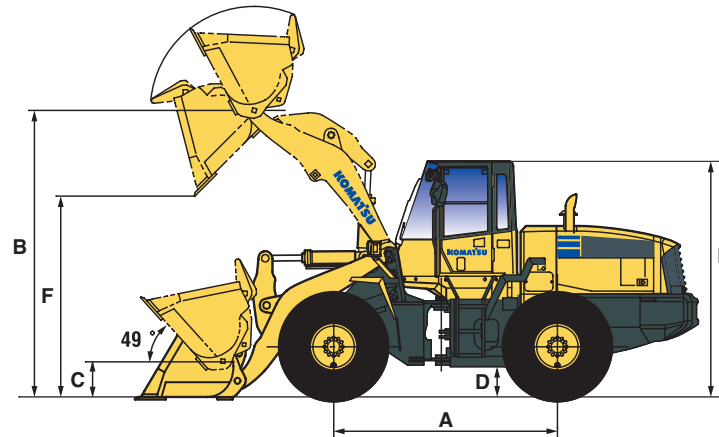
# KOMATSU MID-SIZE WASTE TRANSFER STATION LOADERS

## SPECIFICATIONS



Model	WA380-5		WA380-5 High Lift		WA400-5	
	Loading	Pushing	Loading	Pushing	Loading	Pushing
Bucket capacity, heaped	5.4 m <sup>3</sup> <b>7.0 yd<sup>3</sup></b>	4.6 m <sup>3</sup> <b>6.0 yd<sup>3</sup></b>	5.4 m <sup>3</sup> <b>7.0 yd<sup>3</sup></b>	4.6 m <sup>3</sup> <b>6.0 yd<sup>3</sup></b>	5.7 m <sup>3</sup> <b>7.5 yd<sup>3</sup></b>	4.9 m <sup>3</sup> <b>6.5 yd<sup>3</sup></b>
Bucket width	3403 mm <b>11'2"</b>	3048 mm <b>10'0"</b>	3403 mm <b>11'2"</b>	3048 mm <b>10'0"</b>	3403 mm <b>11'2"</b>	3048 mm <b>10'0"</b>
Bucket weight	2441 kg <b>5,380 lb</b>	2246 kg <b>4,950 lb</b>	2441 kg <b>5,380 lb</b>	2246 kg <b>4,950 lb</b>	2552 kg <b>5,625 lb</b>	2309 kg <b>5,090 lb</b>
Flywheel horsepower	140 kW <b>187 HP</b>	140 kW <b>187 HP</b>	140 kW <b>187 HP</b>	140 kW <b>187 HP</b>	149 kW <b>200 HP</b>	149 kW <b>200 HP</b>
Engine model	SAA6D114E-2	SAA6D114E-2	SAA6D114E-2	SAA6D114E-2	SAA6D114E-2	SAA6D114E-2
Static tipping load straight	15375 kg <b>33,896 lb</b>	15737 kg <b>34,694 lb</b>	11351 kg <b>25,024 lb</b>	11644 kg <b>25,670 lb</b>	14699 kg <b>32,405 lb</b>	14948 kg <b>32,954 lb</b>
Static tipping load 40° full turn	13566 kg <b>29,907 lb</b>	13912 kg <b>30,670 lb</b>	9921 kg <b>21,872 lb</b>	10205 kg <b>22,498 lb</b>	12943 kg <b>28,534 lb</b>	13192 kg <b>29,083 lb</b>
Tread	2160 mm <b>7'1"</b>	2160 mm <b>7'1"</b>	2160 mm <b>7'1"</b>	2160 mm <b>7'1"</b>	2160 mm <b>7'1"</b>	2160 mm <b>7'1"</b>
Width over tires	2780 mm <b>9'1"</b>	2780 mm <b>9'1"</b>	2780 mm <b>9'1"</b>	2780 mm <b>9'1"</b>	2780 mm <b>9'1"</b>	2780 mm <b>9'1"</b>
<b>A</b> Wheelbase	3300 mm <b>10'10"</b>	3300 mm <b>10'10"</b>	3300 mm <b>10'10"</b>	3300 mm <b>10'10"</b>	3300 mm <b>10'10"</b>	3300 mm <b>10'10"</b>
<b>B</b> Hinge pin, max height	4120 mm <b>13'6"</b>	4120 mm <b>13'6"</b>	4650 mm <b>15'3"</b>	4650 mm <b>15'3"</b>	4190 mm <b>13'9"</b>	4190 mm <b>13'9"</b>
<b>C</b> Hinge pin, carry position	545 mm <b>1'9"</b>	545 mm <b>1'9"</b>	710 mm <b>2'4"</b>	710 mm <b>2'4"</b>	545 mm <b>1'9"</b>	545 mm <b>1'9"</b>
<b>D</b> Ground clearance	467 mm <b>1'6"</b>	467 mm <b>1'6"</b>	467 mm <b>1'6"</b>	467 mm <b>1'6"</b>	462 mm <b>1'6"</b>	462 mm <b>1'6"</b>
<b>E</b> Overall height, ROPS Cab	3405 mm <b>11'2"</b>	3405 mm <b>11'2"</b>	3405 mm <b>11'2"</b>	3405 mm <b>11'2"</b>	3405 mm <b>11'2"</b>	3405 mm <b>11'2"</b>
<b>F</b> Dump clearance, max. height and 45° angle	2737 mm <b>9'0"</b>	2896 mm <b>9'7"</b>	3266 mm <b>10'7"</b>	3424 mm <b>11'3"</b>	2759 mm <b>9'1"</b>	2917 mm <b>9'8"</b>
Reach at 2130 mm 7' and 45° dump angle	1967 mm <b>6'5"</b>	1809 mm <b>5'11"</b>	2535 mm <b>8'4"</b>	2376 mm <b>7'9"</b>	2067 mm <b>6'9"</b>	1908 mm <b>6'4"</b>
Reach at max. height and 45° dump angle	1387 mm <b>4'7"</b>	1229 mm <b>4'0"</b>	1521 mm <b>5'0"</b>	1362 mm <b>4'5"</b>	1432 mm <b>4'9"</b>	1273 mm <b>4'2"</b>
Reach with arm horizontal and bucket level	2925 mm <b>9'7"</b>	2701 mm <b>8'10"</b>	3414 mm <b>11'3"</b>	3190 mm <b>10'6"</b>	3038 mm <b>10'0"</b>	2814 mm <b>9'3"</b>
Operating height, fully raised	5899 mm <b>19'5"</b>	5705 mm <b>18'8"</b>	6121 mm <b>20'0"</b>	5927 mm <b>19'6"</b>	6044 mm <b>19'10"</b>	5886 mm <b>19'4"</b>
Overall length, bucket on ground	8299 mm <b>27'3"</b>	8075 mm <b>26'6"</b>	9059 mm <b>29'9"</b>	8835 mm <b>29'0"</b>	8488 mm <b>27'10"</b>	8264 mm <b>27'1"</b>
Loader clearance circle	13453 <b>44'2"</b>	13229 <b>43'5"</b>	14316 <b>47'0"</b>	14092 <b>46'3"</b>	13762 <b>45'2"</b>	13538 <b>44'4"</b>
Operating weight	20440 kg <b>45,062 lb</b>	20241 kg <b>44,623 lb</b>	20769 kg <b>45,788 lb</b>	20570 kg <b>45,349 lb</b>	20593 kg <b>45,399 lb</b>	20351 kg <b>44,866 lb</b>

All dimensions, weights, and performance values based on SAE J732c and J742b standards. Operating weight shown includes lubricant, coolant, full fuel tank, ROPS cab, tires as indicated, operator and waste handler package.



Model	WA450-5		WA450-5 High Lift		WA480-5	
	Loading	Pushing	Loading	Pushing	Loading	Pushing
Bucket capacity, heaped	6.3 m <sup>3</sup> <b>8.25 yd<sup>3</sup></b>	6.1 m <sup>3</sup> <b>8.0 yd<sup>3</sup></b>	6.3 m <sup>3</sup> <b>8.25 yd<sup>3</sup></b>	6.1 m <sup>3</sup> <b>8.0 yd<sup>3</sup></b>	7.1 m <sup>3</sup> <b>9.25 yd<sup>3</sup></b>	6.5 m <sup>3</sup> <b>8.5 yd<sup>3</sup></b>
Bucket width	3403 mm <b>11'2"</b>	3175 mm <b>10'5"</b>	3403 mm <b>11'2"</b>	3175 mm <b>10'5"</b>	3403 mm <b>11'2"</b>	3175 mm <b>10'5"</b>
Bucket weight	2735 kg <b>6,030 lb</b>	2818 kg <b>6,213 lb</b>	2735 kg <b>6,030 lb</b>	2818 kg <b>6,213 lb</b>	3019 kg <b>6,654 lb</b>	3009 kg <b>6,633 lb</b>
Flywheel horsepower	195 kW <b>261 HP</b>	195 kW <b>261 HP</b>	195 kW <b>261 HP</b>	195 kW <b>261 HP</b>	202 kW <b>271 HP</b>	202 kW <b>271 HP</b>
Engine model	SAA6D125E-2	SAA6D125E-2	SAA6D125E-2	SAA6D125E-2	SAA6D125E-2	SAA6D125E-2
Static tipping load straight	16502 kg <b>36,380 lb</b>	16949 kg <b>37,366 lb</b>	11724 kg <b>25,846 lb</b>	11906 kg <b>26,248 lb</b>	15931 kg <b>35,121 lb</b>	16830 kg <b>37,103 lb</b>
Static tipping load 40° full turn	13162 kg <b>29,017 lb</b>	13516 kg <b>29,797 lb</b>	9051 kg <b>19,954 lb</b>	9179 kg <b>20,236 lb</b>	12670 kg <b>27,932 lb</b>	13438 kg <b>29,625 lb</b>
Tread	2300 mm <b>7'7"</b>	2300 mm <b>7'7"</b>	2300 mm <b>7'7"</b>	2300 mm <b>7'7"</b>	2300 mm <b>7'7"</b>	2300 mm <b>7'7"</b>
Width over tires	3010 mm <b>9'11"</b>	3010 mm <b>9'11"</b>	3010 mm <b>9'11"</b>	3010 mm <b>9'11"</b>	3010 mm <b>9'11"</b>	3010 mm <b>9'11"</b>
<b>A</b> Wheelbase	3450 mm <b>11'4"</b>	3450 mm <b>11'4"</b>	3450 mm <b>11'4"</b>	3450 mm <b>11'4"</b>	3450 mm <b>11'4"</b>	3450 mm <b>11'4"</b>
<b>B</b> Hinge pin, max height	4360 mm <b>14'4"</b>	4360 mm <b>14'4"</b>	4870 mm <b>16'0"</b>	4870 mm <b>16'0"</b>	4534 mm <b>14'10"</b>	4534 mm <b>14'10"</b>
<b>C</b> Hinge pin, carry position	585 mm <b>1'11"</b>	585 mm <b>1'11"</b>	730 mm <b>2'5"</b>	730 mm <b>2'5"</b>	614 mm <b>2'0"</b>	614 mm <b>2'0"</b>
<b>D</b> Ground clearance	539 mm <b>1'10"</b>	539 mm <b>1'10"</b>	539 mm <b>1'10"</b>	539 mm <b>1'10"</b>	539 mm <b>1'10"</b>	539 mm <b>1'10"</b>
<b>E</b> Overall height, ROPS Cab	3489 mm <b>11'5"</b>	3489 mm <b>11'5"</b>	3489 mm <b>11'5"</b>	3489 mm <b>11'5"</b>	3529 mm <b>11'7"</b>	3529 mm <b>11'7"</b>
<b>F</b> Dump clearance, max. height and 45° angle	2886 mm <b>9'6"</b>	3049 mm <b>10'0"</b>	3278 mm <b>10'8"</b>	3439 mm <b>11'3"</b>	2946 mm <b>9'8"</b>	3161 mm <b>10'5"</b>
Reach at 2130 mm <b>7'</b> and 45° dump angle	2308 mm <b>7'7"</b>	2145 mm <b>7'0"</b>	2843 mm <b>9'4"</b>	2680 mm <b>8'9"</b>	2423 mm <b>8'0"</b>	2208 mm <b>7'3"</b>
Reach at max. height and 45° dump angle	1563 mm <b>5'2"</b>	1400 mm <b>4'7"</b>	1832 mm <b>6'0"</b>	1669 mm <b>5'5"</b>	1708 mm <b>5'7"</b>	1493 mm <b>4'11"</b>
Reach with arm horizontal and bucket level	3546 mm <b>11'8"</b>	3496 mm <b>11'6"</b>	4015 mm <b>13'3"</b>	3991 mm <b>13'1"</b>	3427 mm <b>11'3"</b>	3123 mm <b>10'3"</b>
Operating height, fully raised	6390 mm <b>21'0"</b>	6191 mm <b>20'4"</b>	6826 mm <b>22'5"</b>	6711 mm <b>22'0"</b>	6445 mm <b>21'2"</b>	6293 mm <b>20'8"</b>
Overall length, bucket on ground	9159 mm <b>30'0"</b>	9208 mm <b>30'2"</b>	9763 mm <b>32'0"</b>	9713 mm <b>31'10"</b>	9202 mm <b>30'3"</b>	8898 mm <b>29'2"</b>
Loader clearance circle	24656 <b>48'1"</b>	14426 <b>47'4"</b>	15418 <b>50'7"</b>	15188 <b>49'10"</b>	14466 <b>47'6"</b>	14162 <b>46'6"</b>
Operating weight	25059 kg <b>55,245 lb</b>	25142 kg <b>55,428 lb</b>	25474 kg <b>56,160 lb</b>	25557 kg <b>56,343 lb</b>	25944 kg <b>57,197 lb</b>	25934 kg <b>57,174 lb</b>

All dimensions, weights, and performance values based on SAE J732c and J742b standards. Operating weight shown includes lubricant, coolant, full fuel tank, ROPS cab, tires as indicated, operator and waste handler package.





**STANDARD EQUIPMENT**

- Waste Handler Package
  - Automatic reversing hydrostatic cooling fan
  - Engine compartment seal package
  - Engine pre-cleaner, centrifugal
  - Heavy-duty compact ladder
  - 4<sup>th</sup> speed-lockout
  - Perforated hood mounted air inlet
  - Guards
    - Articulation area
    - Axle seal
    - Boom cylinder and hose
    - Front frame bottom
    - Front lights
    - Fuel tank
    - Hydraulic tank
    - Powertrain bottom
    - Rear tail lights
- Air cleaner, 2-stage dry with auto dust evacuator, plus dust indicator (radial sealed)
- 2-spool valve for boom and bucket controls
- Alternator, 50 A, 24V
- Auto shift transmission with mode select system
- Axles, semi-floating with conventional differentials
- Back-up alarm
- Batteries, 150 Ah/2 x 12 V, 1000 CCA
- Boom kick-out
- Bucket positioner
- Cab (ROPS/FOPS) with adjustable wrist rests, adjustable work equipment levers, cigarette lighter/ash tray, dome light, electrically heated rear window, air conditioner/heater/defroster/pressurizer, floor mat, front (intermittent) and rear wiper/washer, rearview mirrors (2 outside, 2 inside), right side door and platform, left hand door access with steps, sunvisor
- Centralized grease banks
- Counterweight
- ECSS (Electronically Controlled Suspension System)
- EMMS (Equipment Management Monitoring System)
  - Gauges (Speedometer/tachometer, engine water temperature, fuel level, hydraulic temperature, torque converter temperature)
  - LCD displays (service meter/troubleshooting, shift indicator)
  - Lights (central warning, brake oil pressure, engine oil pressure, engine oil level, air cleaner restriction, parking brake, axle oil temperature, reverse cooling fan, oil change required, battery electrolyte level, radiator water level, engine preheat, battery charge, steering oil pressure, auxillary steering, power mode, joystick steering option, directional indicator, auto shift, torque converter lockup option, shift hold, gear position, torque converter temperature, engine water temperature, turn signals, high beam, rpm/mpg display, hydraulic temperature, fuel level)
- Engine shut-off system, electric
- Fuel water separator
- Horn, electric
- Lift cylinders and bucket cylinder
- Lifting eye
- Lights
  - Stop and tail
  - Turn signal, 2 front, 2 rear with hazard switch
  - Working lights, halogen (2 front, high-low beam with indicator, fender mount, 2 rear, 2 front, outside mount)
- Loader linkage with standard lift arm
- Parking brake, wet multi-disc
- PPC fingertip control, two levers
- Radiator mask, lattice type
- Seat, fabric, air suspension, reclining, armrests
- Seat belt, retractable, 76 mm 3" wide
- Service brakes, wet disc type
- Starting aid, air intake manifold preheater
- Starting motor, 7.5 kW/24 V
- Steering wheel, tilttable, telescopic
- Step, rail
- Swing-out aftercooler and oil cooler
- Tool box (in battery boxes)
- Transmission, 4 forward and 4 reverse
- Vandalism protection kit
- Voltage converter, 5A, 12V



**OPTIONAL EQUIPMENT**

- 3-spool valve, with lever and piping
- AM/FM stereo radio cassette
- Auxillary steering
- High lift arrangement (WA380, WA450)
- Joystick steering
- Limited slip differential (F&R)
- Load meter
- Load meter printer
- Lock-up torque converter
- ROPS/FOPS open canopy
- Single lever, multi-function loader and transmission control
- Suspension seat, vinyl
- Windshield guard

Waste Handler Buckets*	WA380-5		WA400-5		WA450-5		WA480-5	
Loader Style	5.4 m <sup>3</sup>	<b>7.0 yd<sup>3</sup></b>	5.7 m <sup>3</sup>	<b>7.5 yd<sup>3</sup></b>	6.3 m <sup>3</sup>	<b>8.25 yd<sup>3</sup></b>	7.1 m <sup>3</sup>	<b>9.25 yd<sup>3</sup></b>
Pusher And Loader Style	4.6 m <sup>3</sup>	<b>6.0 yd<sup>3</sup></b>	4.9 m <sup>3</sup>	<b>6.5 yd<sup>3</sup></b>	6.1 m <sup>3</sup>	<b>8.0 yd<sup>3</sup></b>	6.5 m <sup>3</sup>	<b>8.5 yd<sup>3</sup></b>

\* Can only be ordered with the waste handler package.

# KOMATSU®



AE55655-02

©2005 Komatsu Printed in USA

DK05(5M)C

05/05 (EV-1)

## KOMATSU®

440 N. Fairway Dr.  
P.O. Box 8112  
Vernon Hills, IL 60061

