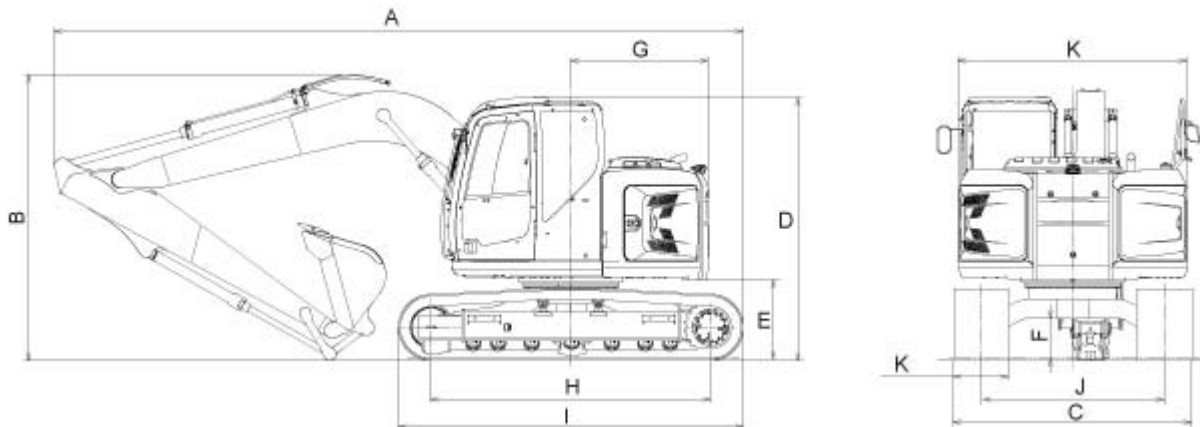


[Back to INDEX](#)

SK140SRLC (SK140SRLC-3)

DIMENSIONS



Unit: ft-in{mm}

Arm length	7'10" {2.38m}	9'4" {2.84m}	G Tail swing radius	4'11" {1,490}
A Overall length	24'7" {7,500}	24'7" {7,500}	H Tumbler distance	9'12" {3,040}
B Overall height (to top of boom)	8'11" {2,730}	10'2" {3,110}	I Overall length of crawler	12'4" {3,750}
C Overall width	8'6" {2,590}		J Track gauger	6'6" {1,990}
D Overall height (to top of cab)	9'5" {2,860}		K Shoe width	19.7" {500} / 23.6" {600} / 27.6" {700}
E Ground clearance of rear end*	33.7" {855}		L Overall width of upperstructure	8'2" {2,490}
F Ground clearance*	17.3" {440}			

* Without including height of shoe lug.

MAIN SPECIFICATIONS

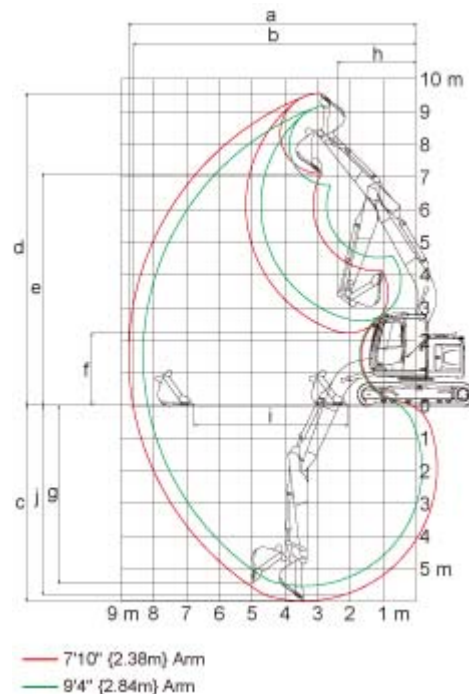
Model Name	SK140SRLC								
Machine Type	SK140SRLC-3								
Operating Weight	lbs {kg}	33,100 {14,100}							
Bucket	Bucket capacity								
	SAE	cu.yd.	0.31	0.41	0.50	0.59	0.65	0.75	0.90
	heaped	{m³}	{0.24}	{0.31}	{0.38}	{0.45}	{0.50}	{0.57}	{0.70}
	Bucket capacity								
	SAE	cu.yd.	0.26	0.30	0.37	0.46	0.50	0.56	0.65
	Struck	{m³}	{0.20}	{0.23}	{0.28}	{0.35}	{0.38}	{0.43}	{0.50}

	Opening width Without side cutter inches {mm}	23 {590}	28 {700}	31 {800}	36 {915}	39 {1,000}	43 {1,100}	-
	Opening width Without side cutter inches {mm}	20 {500}	24 {600}	28 {700}	31 {815}	35 {900}	39 {1,000}	45 {1,150}
	Bucket weight lbs {kg}	620 {280}	660 {300}	710 {320}	790 {360}	860 {390}	880 {400}	880 {400}
Engine	Model	MITSUBISHI D04EG-74kW-01						
	Type	Direct injection, water-cooled, 4-cycle diesel engine With turbocharger, intercooler						
	Rated power output	99.2 hp {74kW} /2,000 rpm {min ⁻¹ } (ISO 14396) 92.8 hp {69.2kW} /2,000 rpm {min ⁻¹ } (ISO 9249)						
	Fuel tank	52.8 U.S.gal {200 L}						
Swing System	Swing speed	11.0 rpm {min ⁻¹ }						
Travel System	Travel motors	2 x axial-piston, two-step motors						
	Travel shoes	46 each side						
	Travel speed	3.5 / 2.1 mph {5.6 / 3.4 km/h}						
	Drawbar pulling force	31,100 lbs {139 kN} (SAE J 1309)						
	Gradeability	70 % {35°}						
Hydraulic System	Pump Type	Two variable displacement pumps						
	Max. discharge flow	2 x 34.3 U.S.gph {2 x 130L/min} , 1 x 5.3 U.S.gph {1 x 20L/min}						
	Hydraulic oil tank	22.5 U.S.gal {85.2 L} tank oil level 33.5 U.S.gal {126.7 L} hydraulic system						

WORKING RANGES

Unit: ft-in{m}

Boom length	15'4" {4.68m}	
Range/Arm	7'10" {2.38m}	9'4" {2.84m}
a Max. digging reach	27'4" {8.34}	28'10" {8.78}
b Max. digging reach at ground level	26'10" {8.19}	28'4" {8.64}
c Max. digging depth	18'1" {5.52}	19'7" {5.98}
d Max. digging height	30'2" {9.19}	31'4" {9.56}
e Max. dumping clearance	22'1" {6.74}	23'4" {7.10}
f Min. dumping clearance	8'6" {2.58}	7'3" {2.22}
g Max. vertical wall digging depth	16'1" {4.89}	17'10" {5.44}
h Min. swing radius	6'7" {2.00}	7'10" {2.40}
i Horizontal digging stroke at ground level	13'10" {4.21}	15'5" {4.70}
j Digging depth for 8 feet flat bottom	17'4" {5.29}	19'0" {5.79}
Bucket capacity SAE heaped cu.yd. {m³}	0.65 {0.50}	0.50 {0.38}



Digging Force

Unit: lbs {kN}

		7'10" {2.38m}	9'4" {2.84m}
Arm length			
Bucket digging force	SAE	18,300 {81.4}	18,100 {80.3}
	ISO	20,300 {90.1}	20,100 {89.3}
Arm crowding force	SAE	14,000 {62.3}	12,700 {56.7}
	ISO	14,500 {64.4}	13,100 {58.1}

This page may contain attachments and optional equipment that are not available in your area. And it may contain photographs of machines with specifications that differ from those of machines sold in your areas. Please consult your nearest Kobelco distributor for those items you require. Due to our policy of continuous product improvements all designs and specifications are subject to change without advance notice.

[↑ Back to top](#)



[Contact Us](#)



[Personal Information Protection Policy](#)



[Use of Website](#)