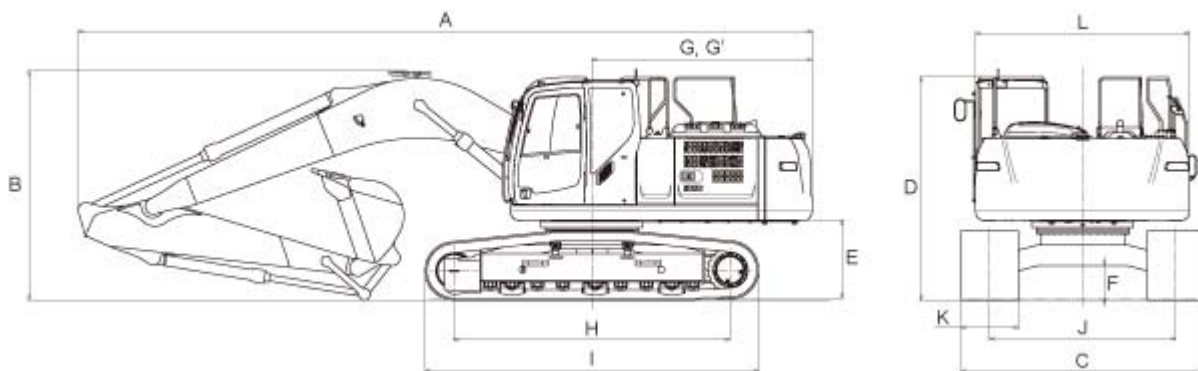


[➔ Back to INDEX](#)

SK260LC (SK260LC-9)

DIMENSIONS



Unit: ft-in{mm}

| | | | | | |
|-----------------------------------|-------------------------|------------------------------|---------------------------|--|---|
| Arm length | Short 8'2" {2.5m} | Standard 9'9" {2.98 m} | Long 12'0" {3.66 m} | G Tail swing radius | 10'2" {3,100} |
| A Overall length | 33'8" {10,270} | 33'6" {10,220} | 33'7" {10230} | G' Distance from center of swing to rear end | 10'1" {3,070} |
| B Overall height (to top of boom) | 10'12" {3,350} | 10'5" {3,180} | 10'10" {3300} | H Tumbler distance | 12'8" {3,850} |
| C Overall width | | 11'1" {3,390} | | I Overall length of crawler | 15'3" {4,640} |
| D Overall height (to top of cab) | | 10'2" {3,100} | | J Track gauge | 8'6" {2,590} |
| E Ground clearance of rear end* | | 3'7" {1,090} | | K Shoe width | 23.6" {600} / 27.6" {700} / 31.5" {800} |
| F Ground clearance* | | 18.1" {460} | | L Overall width of upperstructure | 9'9" {2,980} |

* Without including height of shoe lug.

MAIN SPECIFICATIONS

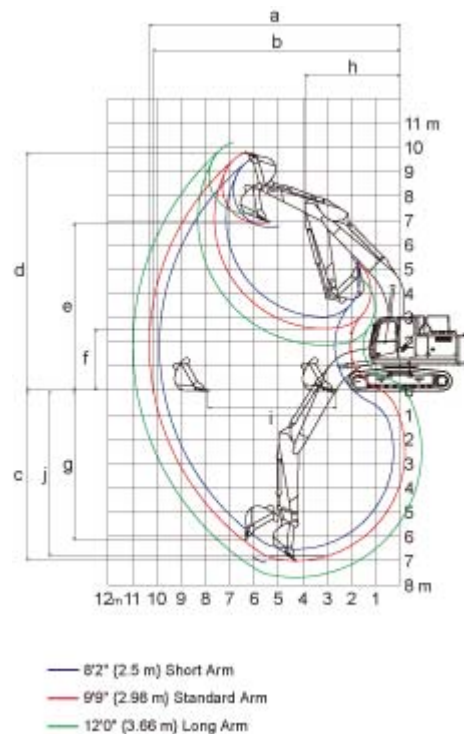
| | | | | | |
|------------------|----------------------------|--------------------------|-------------|-------------|-------------------------|
| Model Name | SK260LC | | | | |
| Machine Type | SK260LC-9 | | | | |
| Operating Weight | lbs {kg} 56,890 {25,800} | | | | |
| Bucket | Bucket capacity SAE heaped | cu.yd. {m ³ } | 1.05 {0.80} | 1.31 {1.00} | 1.57 {1.20} 1.83 {1.40} |

| | | | | | | |
|---------------------------|--|---|-------------|-------------|-------------|-------------|
| | Bucket capacity SAE Struck | cu.yd. {m³} | 0.77 {0.59} | 0.99 {0.76} | 1.10 {0.84} | 1.31 {1.00} |
| | Opening width With side cutter | | 42 {1,060} | 50 {1,270} | 57 {1,440} | - |
| | | inches {mm} | | | | |
| | Opening width Without side cutter | | 38 {960} | 46 {1,180} | 53 {1,340} | 59 {1,510} |
| | | inches {mm} | | | | |
| | Bucket weight | | 1,540 {700} | 1,790 {810} | 1,870 {850} | 1,960 {890} |
| | | lbs {kg} | | | | |
| Engine | Model | HINO J05E-TI | | | | |
| | Type | Direct injection, water-cooled, 4-cycle diesel engine with turbocharger, intercooler (Complies with EU (NRMM) Stage IIIB, EPA Tier IV, and act on regulation, etc. of emission from non- road special motor vehicles (Japan)) | | | | |
| | Rated power output | 184 hp {137 kW} /2,100 rpm {min ⁻¹ } (ISO 14396) 176 hp {131 kW} /2,100 rpm {min ⁻¹ } (ISO 9249) | | | | |
| | Fuel tank | 121.5 U.S.gal {460L} | | | | |
| Swing System | Swing speed | 10.2 rpm {min ⁻¹ } | | | | |
| Travel System | Travel motors | 2 x axial-piston, two-step motors | | | | |
| | Travel shoes | 51 each side | | | | |
| | Travel speed | 3.6 / 2.2 mph {5.8 / 3.6 km/h} | | | | |
| | Drawbar pulling force | 54,900 lbs {244 kN} (SAE J 1309) | | | | |
| | Gradeability | 70 % {35°} | | | | |
| Hydraulic System | Pump Type | Two variable displacement pumps + 1 gear pump | | | | |
| | Max. discharge flow | 2 x 65.0 U.S.gph {2 x 246L/min} , 1 x 5.3 U.S.gph {1 x 20L/min} | | | | |
| Hydraulic oil tank | | 44.9 U.S.gal {170 L} tank oil level 74.0 U.S.gal {280 L} hydraulic system | | | | |

WORKING RANGES

Unit: ft-in{m}

| | 19'9" {6.02m} | | |
|---|---------------|----------------|---------------|
| | 8'2" {2.5m} | 9'9" {2.98m} | 12'0" {3.66m} |
| Range/Arm | | | |
| a Max. digging reach | 32'5" {9.89} | 33'10" {10.31} | 36'0" {10.98} |
| b Max. digging reach at ground level | 31'11" {9.72} | 33'3" {10.14} | 35'6" {10.82} |
| c Max. digging depth | 21'5" {6.52} | 23'0" {7.00} | 25'2" {7.68} |
| d Max. digging height | 31'8" {9.65} | 32'2" {9.80} | 33'6" {10.22} |
| e Max. dumping clearance | 22'1" {6.72} | 22'7" {6.88} | 23'11" {7.28} |
| f Min. dumping clearance | 9'11" {3.03} | 8'4" {2.55} | 6'2" {1.87} |
| g Max. vertical wall digging depth | 19'1" {5.82} | 20'2" {6.15} | 22'10" {6.97} |
| h Min. swing radius | 12'10" {3.91} | 12'10" {3.91} | 12'10" {3.92} |



| | | | |
|--|--------------|--------------|--------------|
| Horizontal i digging stroke at ground level | 13'9" {4.20} | 17'3" {5.26} | 21'3" {6.48} |
| Digging depth j for 8 feet flat bottom | 20'9" {6.32} | 22'5" {6.82} | 24'9" {7.54} |
| Bucket capacity SAE heaped cu.yd. {m³} | 1.57 {1.20} | 1.31 {1.00} | 1.05 {0.80} |

| Digging Force | | Unit: lbs {kN} | | |
|---------------------------------|------------|------------------------|-------------------------|--------------------------|
| Arm length | | 8'2" {2.5m} | 9'9" {2.98m} | 12'0" {3.66m} |
| | | 34,200 | 34,200 | 34,200 |
| | SAE | {152} | {152} | {152} |
| | | 37,500 | 37,500 | 37,500 |
| | | {167}* | {167}* | {167}* |
| Bucket digging force | | 38,200 | 38,200 | 38,200 |
| | ISO | {170} | {170} | {170} |
| | | 42,000 | 42,000 | 42,000 |
| | | {187}* | {187}* | {187}* |
| | | 30,800 | 26,100 | 22,700 |
| | SAE | {137} | {116} | {101} |
| | | 33,900 | 28,600 | - |
| | | {151}* | {127}* | - |
| Arm crowding force | | 31,900 | 27,400 | 23,400 |
| | ISO | {142} | {122} | {104} |
| | | 35,100 | 30,100 | - |
| | | {156}* | {134}* | - |

*Power Boost engaged.

This page may contain attachments and optional equipment that are not available in your area. And it may contain photographs of machines with specifications that differ from those of machines sold in your areas. Please consult your nearest Kobelco distributor for those items you require. Due to our policy of continuous product improvements all designs and specifications are subject to change without advance notice.

[↑ Back to top](#)