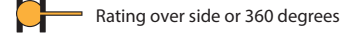
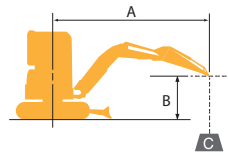


## LIFTING CAPACITIES



A: Reach from swing centerline to arm tip  
 B: Arm tip height above/below ground  
 C: lifting capacities in pounds  
 Shoe: Rubber shoe Dozer blade: Down  
 Relief valve setting: 3,335 psi (23 MPa)

SK35SR Cab		Arm: 5' 6" (1.67 m), Bucket: without Shoe: 11.8" (300 mm) Heavy Counterweight (+550lbs/250kg)												
		5 ft		7.5 ft		10 ft		12.5 ft		15 ft		At Max. Reach		Radius (ft)
B	A	Rating over front	Rating over side or 360 degrees	Rating over front	Rating over side or 360 degrees	Rating over front	Rating over side or 360 degrees	Rating over front	Rating over side or 360 degrees	Rating over front	Rating over side or 360 degrees	Rating over front	Rating over side or 360 degrees	
12.5 ft	lb							*1,560	*1,560			*1,610	1,490	12.1
10 ft	lb							*1,490	*1,490			*1,550	1,210	14.7
7.5 ft	lb							*1,650	1,540	*1,620	1,150	*1,520	1,080	15.7
5 ft	lb			*3,460	3,190	*2,340	2,060	*1,920	1,480	*1,720	1,130	*1,550	1,010	16.1
2.5 ft	lb			*4,860	2,960	*2,940	1,960	*2,210	1,430	*1,840	1,100	*1,640	1,000	16.1
G.L.	lb	*2,350	*2,350	*5,250	2,880	*3,280	1,890	*2,400	1,390	*1,900	1,090	*1,800	1,030	15.7
-2.5 ft	lb	*4,150	*4,150	*5,060	2,870	*3,310	1,870	*2,400	1,380			*1,870	1,130	14.6
-5 ft	lb	*6,400	6,060	*4,400	2,900	*2,960	1,890	*2,050	1,400			*1,930	1,360	12.9
-7.5 ft	lb	*5,020	*5,020	*2,950	*2,950							*1,880	*1,880	9.9

SK35SR Canopy		Arm: 5' 6" (1.67 m), Bucket: without Shoe: 11.8" (300 mm) Heavy Counterweight (+550lbs/250kg)												
		5 ft		7.5 ft		10 ft		12.5 ft		15 ft		At Max. Reach		Radius (ft)
B	A	Rating over front	Rating over side or 360 degrees	Rating over front	Rating over side or 360 degrees	Rating over front	Rating over side or 360 degrees	Rating over front	Rating over side or 360 degrees	Rating over front	Rating over side or 360 degrees	Rating over front	Rating over side or 360 degrees	
12.5 ft	lb							*1,560	1,510			*1,610	1,440	12.1
10 ft	lb							*1,490	*1,490			*1,550	1,170	14.7
7.5 ft	lb							*1,650	1,480	*1,620	1,110	*1,520	1,030	15.7
5 ft	lb			*3,460	3,080	*2,340	1,990	*1,920	1,430	*1,720	1,090	*1,550	970	16.1
2.5 ft	lb			*4,860	2,850	*2,940	1,880	*2,210	1,380	*1,840	1,060	*1,640	960	16.1
G.L.	lb	*2,350	*2,350	*5,250	2,770	*3,280	1,820	*2,400	1,340	*1,900	1,040	*1,800	990	15.7
-2.5 ft	lb	*4,150	*4,150	*5,060	2,760	*3,310	1,800	*2,400	1,320			*1,870	1,080	14.6
-5 ft	lb	*6,400	5,840	*4,400	2,790	*2,960	1,810	*2,050	1,340			*1,930	1,300	12.9
-7.5 ft	lb	*5,020	*5,020	*2,950	*2,880							*1,880	*1,880	9.9

SK35SR Cab		Arm: 4' 6" (1.37 m), Bucket: without Shoe: 11.8" (300 mm) STD. Counterweight												
		5 ft		7.5 ft		10 ft		12.5 ft		15 ft		At Max. Reach		Radius (ft)
B	A	Rating over front	Rating over side or 360 degrees	Rating over front	Rating over side or 360 degrees	Rating over front	Rating over side or 360 degrees	Rating over front	Rating over side or 360 degrees	Rating over front	Rating over side or 360 degrees	Rating over front	Rating over side or 360 degrees	
12.5 ft	lb											*1,820	1,510	11.6
10 ft	lb							*1,730	1,340			*1,790	1,160	13.6
7.5 ft	lb					*2,040	1,850	*1,850	1,310			*1,810	1,010	14.7
5 ft	lb			*4,190	2,660	*2,630	1,750	*2,090	1,260	*1,860	960	*1,850	940	15.1
2.5 ft	lb			*3,780	2,490	*3,140	1,660	*2,330	1,210	*1,920	940	*1,900	920	15.1
G.L.	lb			*5,230	2,460	*3,360	1,610	*2,460	1,180			*1,970	960	14.7
-2.5 ft	lb	*4,860	*4,860	*4,830	2,470	*3,250	1,600	*2,350	1,180			*2,030	1,070	13.5
-5 ft	lb	*6,720	5,290	*3,940	2,520	*2,690	1,630					*2,060	1,360	11.6
-7.5 ft	lb			*1,840	*1,840							*1,740	*1,740	7.8

SK35SR Canopy		Arm: 4' 6" (1.37 m), Bucket: without Shoe: 11.8" (300 mm) STD. Counterweight												
		5 ft		7.5 ft		10 ft		12.5 ft		15 ft		At Max. Reach		Radius (ft)
B	A	Rating over front	Rating over side or 360 degrees	Rating over front	Rating over side or 360 degrees	Rating over front	Rating over side or 360 degrees	Rating over front	Rating over side or 360 degrees	Rating over front	Rating over side or 360 degrees	Rating over front	Rating over side or 360 degrees	
12.5 ft	lb											*1,820	1,450	11.6
10 ft	lb							*1,730	1,280			*1,790	1,110	13.6
7.5 ft	lb					*2,040	1,780	*1,850	1,250			*1,810	970	14.7
5 ft	lb			*4,190	2,550	*2,630	1,670	*2,090	1,210	*1,860	910	*1,850	900	15.1
2.5 ft	lb			*3,780	2,380	*3,140	1,580	*2,330	1,160	*1,920	890	*1,900	880	15.1
G.L.	lb			*5,230	2,350	*3,360	1,540	*2,460	1,130			*1,970	920	14.7
-2.5 ft	lb	*4,860	*4,860	*4,830	2,360	*3,250	1,530	*2,350	1,130			*2,030	1,020	13.5
-5 ft	lb	*6,720	5,070	*3,940	2,410	*2,690	1,560					*2,060	1,300	11.6
-7.5 ft	lb			*1,840	*1,840							*1,740	*1,740	7.8

### Notes:

- Do not attempt to lift or hold any load that is greater than these lift capacities at their specified lift point radius and heights. Weight of all accessories must be deducted from the above lift capacities.
- Lift capacities are based on machine standing on level, firm, and uniform ground. User must make allowance for job conditions such as soft or uneven ground, out of level conditions, side loads, sudden stopping of loads, hazardous conditions, experience of personnel, etc.
- Arm tip defined as lift point.
- The above lifting capacities are in compliance with ISO 10567. They do not exceed 87% of hydraulic lifting capacity or 75% of tipping load. Lifting capacities marked with an asterisk (\*) are limited by hydraulic capacity rather than tipping load. The excavator bucket weight is not included on this chart. Lifting capacities are for standard arm.
- Operator should be fully acquainted with the Operator's and Maintenance Instructions before

Note: This catalog may contain attachments and optional equipment that are not available in your area. And it may contain photographs of machines with specifications that differ from those of machines sold in your areas. Please consult your nearest KOBELCO distributor for those items you require. Due to our policy of continuous product improvements all designs and specifications are subject to change without advance notice.  
 Copyright by KOBELCO CONSTRUCTION MACHINERY CO., LTD. This catalog may be reproduced in any manner without notice.

## KOBELCO CONSTRUCTION MACHINERY U.S.A. INC.

4690 World Houston Parkway Houston, TX 77032  
<http://www.kobelco-usa.com/>

Inquiries To:

# KOBELCO

SK35SR-6E

# MINI EXCAVATORS SK35SR



**DRIVEN BY  
PASSION**



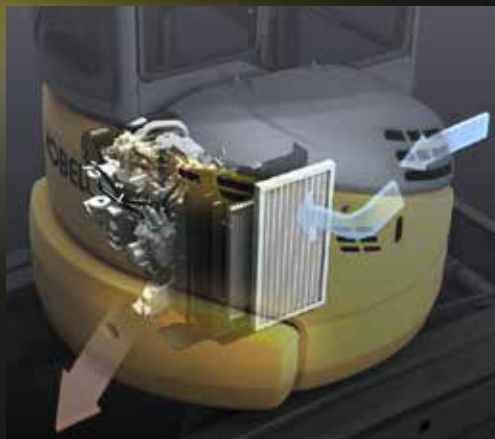
Full-Size Performance, Short-radius Agility and Quiet Operation

# COMPACT YET TOUGH MINI

The new KOBELCO SK35SR expands the horizons of mini excavators, and offers practical performance features while maintaining a short tail swing. The new Energy Conservation Mode saves even more fuel, and Kobelco's proprietary iNDr Cooling System ensures quiet operation, protection from dust, and easy maintenance. For greater operator comfort and safety, the rectangular cab design offers plenty of room and an unobstructed view. It all adds up to enhanced full-size performance, short-radius agility and a low-noise environment, with exceptional performance features and a full range of value-added functions.



The highly airtight engine compartment and the offset duct contribute to noise reduction. The iNDr filter fitted in front of the cooling system ensures easy cleaning. The muffler is designed to disperse and slow down the exhaust. The muffler exhaust is directed underneath for environmental protection. The SK35SR is an advanced machine which incorporates the iNDr and eco-friendly system (iNDr+E).





## iNDr Cooling System

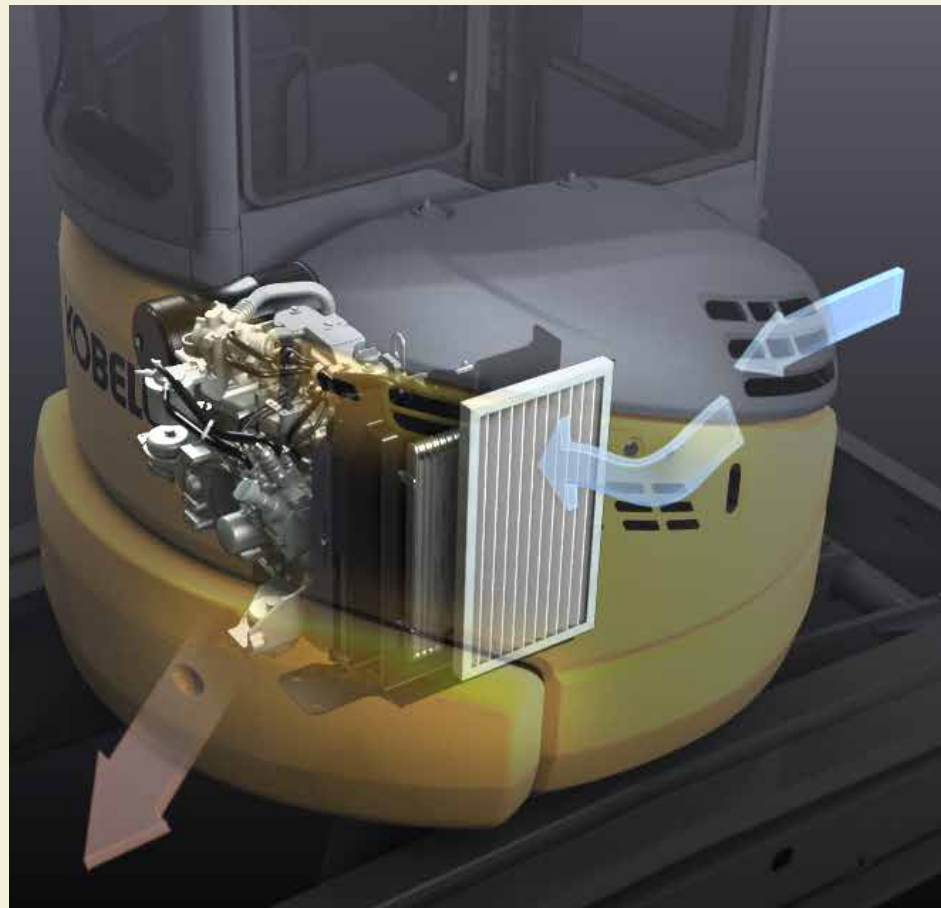
### The Revolutionary Integrated Noise and Dust Reduction Cooling System



The iNDr+E system on the SK35SR features air intake at the front of the machine and air exhaust underneath. It functions in the same way as the iNDr system on the SR series machines, but also directs the muffler exhaust underneath. Small holes on the muffler disperse and slow down the exhaust. The exhaust is further slowed down and cooled through the offset duct and then discharged into the atmosphere.

#### iNDr Filter Blocks Out Dust

Outside air goes directly from the intake duct through the iNDr filter for dust removal.



#### Visual Checking and Easy Cleaning

Because the iNDr filter removes dust from the intake air, cooling components stay dirt-free and do not require regular cleaning. The iNDr filter itself can be easily removed and cleaned without the use of tools.



Offset duct slow down exhaust



Exhaust: exhaust from the muffler



Holes on the muffler disperse exhaust

#### Ultimate Low Noise

KOBELCO's exclusive iNDr Cooling System delivers amazingly quiet operation.

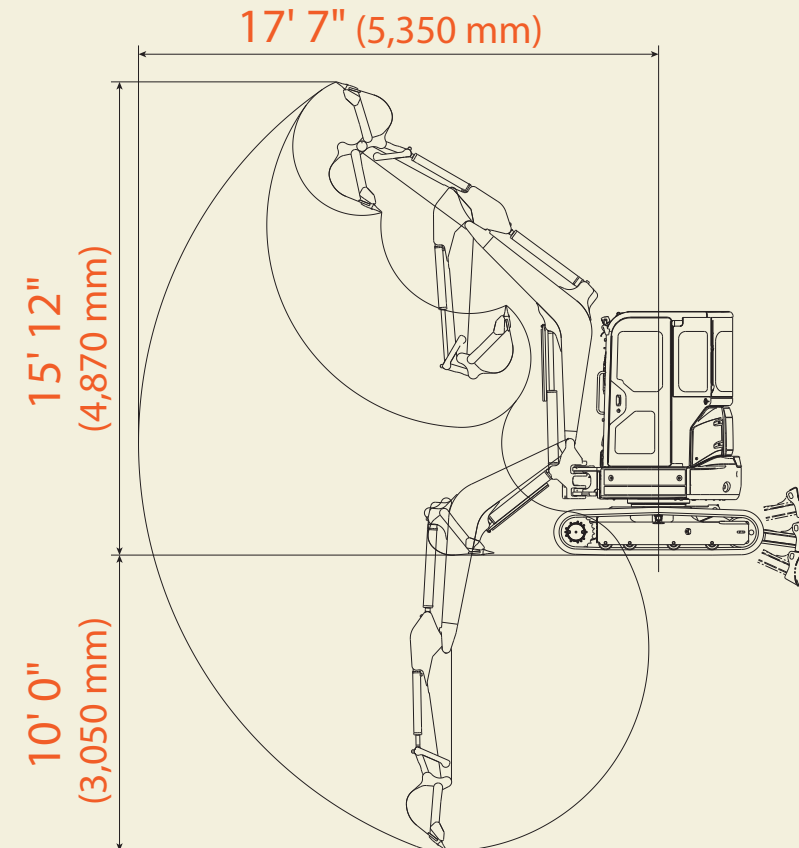


at 3' 3" (1 m) backward from machine rearend and 4' 11" (1.5 m) height from ground level.

## Compact, yet, Big Performance

#### Wide Working Range

A larger boom and arm are provided as standard equipment to ensure a wider working range.



#### Short Tail Swing

The compact tail swing improves operating efficiency in limited space.

#### Tail overhang:

0" (0 mm) [Standard weight]  
4" (90 mm) [Additional weight]



#### Energy Conservation Mode

The SK35SR adapts S mode which enables 25 percent less fuel consumption compared with the previous model.



#### One Touch Deceleration

The SK35SR features one-touch deceleration. It allows easy switching to an idling mode, reducing fuel consumption while the machine is at rest.



#### Easy Transportability

With an overall cab height of 8' 3" (2,510 mm), the machine is designed for easy transport.



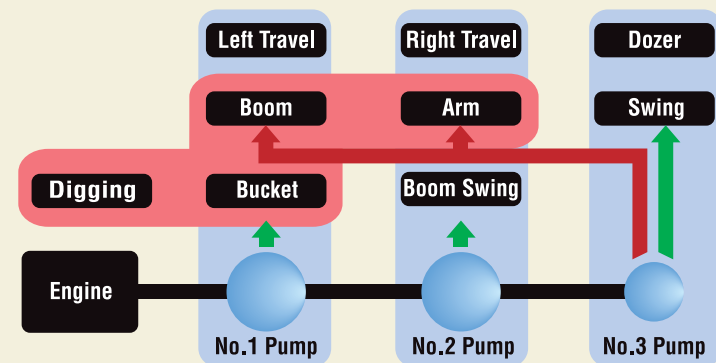


## Fast, Full-Powered Digging and Leveling

### Powerful Digging Performance

#### Integrated-Flow Pump System

The instant the machine begins to dig, extra output from the third pump (which otherwise powers the swing and dozer circuit) is directed to the arm circuit and boom circuit (raise) for added power. This ensures fast and smooth arm and boom raising operation even under heavy loads.



#### Large Capacity Engine

The large-capacity engine meets Tier IV final requirements and packs plenty power for outstanding hydraulic performance.



### More Travel Power

#### Large Capacity Travel Torque

The large capacity travel torque enables the machine to perform spin turn in low mode even when the dozer is pushing a heavy load.

#### Automatic Two-Speed Travel

An automatic shift function ensures smoother, more efficient travel on worksite.

#### Travel Switch

The travel lever is fitted with a button for easy switching to Hi-Mode travel.



### Powerful and Efficient Dozer Performance

#### New Dozer-Blade Shape

KOBELCO's unique blade design solves this problem by forming the earth into an arc that always falls forward. Because this prevents earth from falling behind the blade, only "one pass" is needed.



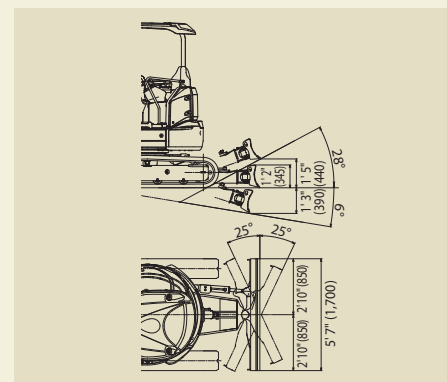
#### Hydraulic Pilot-Controlled Dozer Operation Lever

The dozer lever features hydraulic pilot control for precise handling.



#### New 4-way Blade Option

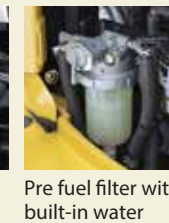
Brand new from KOBELCO is a 4-way blade option available on the SK35SR. Built-in the same durability as the standard blade, this 4-way option provides 25 to 25 degrees of left and right angle movement for clearing, grading and back-filling. The 4-way blade gives you better control for following changing terrain and helps eliminate the windrowing effect that can occur with standard dozer blades. With all of these new options, the new KOBELCO Tier IV compact excavators are "Your Competitive Edge" for increased profitability.



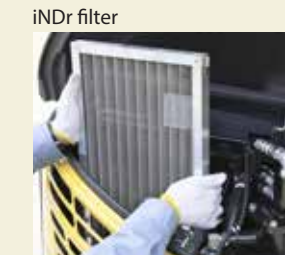
## Easy Daily Maintenance

Start-up checks are essential for safe and reliable machine operation. All start-up checks can be performed at ground level, with an easy-to-understand layout and cover design that simplify access and save time.

#### Easy Access to Engine Compartment



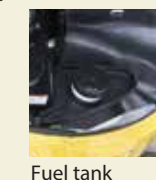
#### Easy Access to Cooling Unit



#### Easy Access Electrical Component Under the Seat



Two-piece floor mats for easy washing





COMFORT

## Comfortable Work Environment

### Spacious Work Environment

The newly designed rectangular cab is optimized control layout for comfortable, easy operation. A greater window area further improves visibility. A clear view is provided at the rear, and there's also more floor space, with a seat that slides further to ensure plenty of leg room.



### Easy Access

A wide-opening door and a left-hand tilting control console with a safety lever that rises high, make it much easier for operators to enter and exit the cab.



### Plenty of Foot Room

Generous space below facilitates pedal operation.

### Work Light

Lighting installed on the underside of the boom minimizes the risk of damage to it.



### Standard Pattern Changer

Standard pattern changer allows for increased utilization and flexibility to match operator preference.



### Control Lever

Precise proportional controls are integrated into the joystick for ease of operation.



### Color Liquid Crystal Monitor (Optional)

The color liquid crystal monitor is fitted as option. Operation data as well as the full range of machine-status data can readily be checked.



Maintenance Working hours Fuel Consumption

## Comfortable Operating Environment

### Hammer for emergency exit



### Climate control

The climate control system is located down and to the right of the seat, keeping the rear view clear.



### Opening/closing front window

The front window features gas damper cylinders for smooth and easy opening and closing.



### Coat hook



### Room light



Vents to send cooled air toward the operator as needed.

### Two-speaker FM/AM radio with station select



## Operator Safety

### Reliable Cab Structure

The high-strength cab meets ROPS and FOPS standards for greater operator safety.



### Exclusive, Newly Designed TOPS/FOPS Canopy

The high-strength canopy meets all three TOPS, ROPS, and FOPS standards for greater operator safety.





# RELIABILITY

## Reliable Construction

The boom, arm, and swing bracket all have large cross-section segments for added attachment strength.

### Strong boom and arm



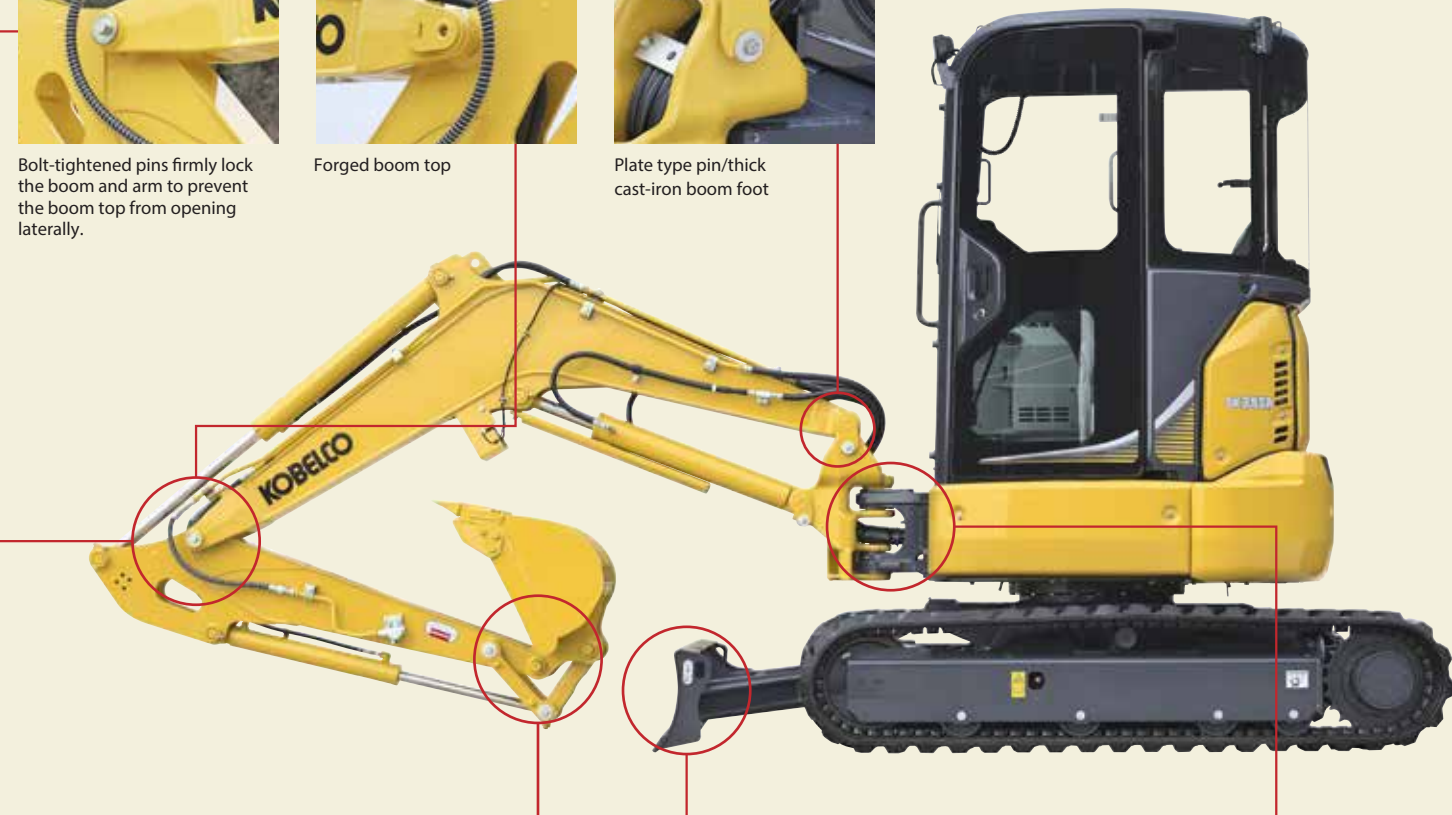
Bolt-tightened pins firmly lock the boom and arm to prevent the boom top from opening laterally.



Forged boom top



Plate type pin/thick cast-iron boom foot



**Bucket**  
Cast-iron idler links provide greater strength.



**Dozer**  
Box construction dozer supports provide greater strength.



**Swing bracket**  
Large, thick cast-iron swing bracket/front bracket.



**Hydraulic piping**  
The hydraulic piping is housed inside the swing bracket.

### Accumulator for Emergency Attachment Lowering

A newly installed accumulator allows the attachment to be safely lowered to the ground using in-cab controls in the event of an unexpected engine shut-down.

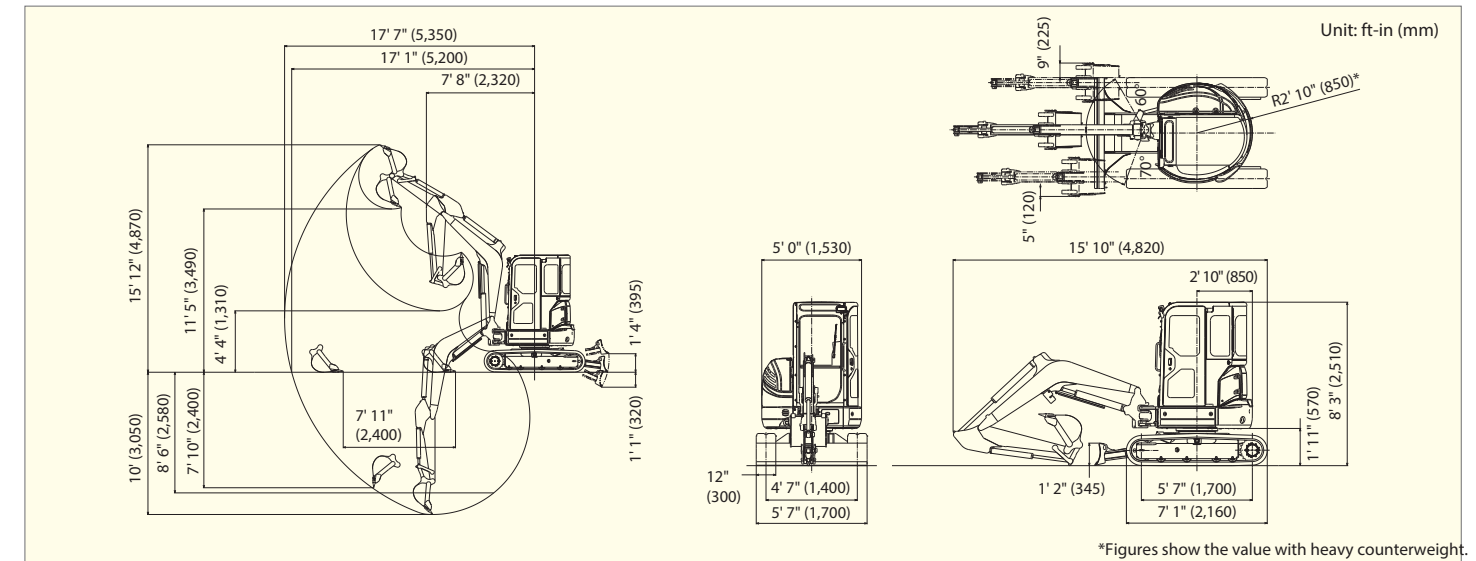
## SPECIFICATIONS

GENERAL			
MODEL		SK35SR	
Type		SK35SR-6E	
Machine Mass	Cab	lbs (kg)	8,555 (3,880)*
	Canopy	lbs (kg)	8,214 (3,725)*
Bucket Capacity		cu ft (m <sup>3</sup> )	3.88 (0.11)
Bucket Width (with side cutter)		ft-in (mm)	1' 12" (600)
Arm Length		ft-in (m)	4' 6" (1.37)
Bucket Digging Force (SAE J1179)			5,418 (24.1)
			7,216 (32.1): Two pin bucket
Bucket Digging Force (ISO 7451)			6,250 (27.8)
			8,588 (38.2): Two pin bucket
Arm Crowding Force (SAE J1179)		lbf (kN)	4,810 (21.4)
Arm Crowding Force (ISO 7451)		lbf (kN)	5,058 (22.5)
ENGINE			
Model		YANMAR 3TNV88F-E	
Type		Water cooled, 4-cycle, 3-cylinder, direct injection, diesel engine	
Power Output		hp (kW)/rpm	23.1 (17.2)/2,400 (SAE NET)
Max. Torque		lbf-ft (N-m)/rpm	60 (81.7)
Displacement		cu in (L)	100.2 (1.642)
Fuel Tank		U. S. gal (L)	11 (42)
HYDRAULIC SYSTEM			
Pump		Two variable displacement pumps + two gear pumps (one for pilot)	
Max. Discharge Flow		US gal (L)/min	2 x 10.1 (38.4) 5.1 (19.2) 2.9 (10.8)
Relief Valve Setting (Excavating circuits)		psi (Mpa)	3,335 (23.0)
Relief Valve Setting (Dozer circuit)		psi (Mpa)	2,900 (20)
Hydraulic Oil Tank (system)		US gal (L)	5.4 (20.4) (11.8 (44.8))

TRAVEL SYSTEM				
Travel Motors		2 x axial-piston, two-step motors		
Parking Brake		Oil disc brake per motor		
Travel Speed (high/low)		mph (km/h)	2.7 (4.4) / 1.6 (2.5)	
Drawbar Pulling Force (SAE)	Cab	lbf (kN)	8,565 (38.1)	
	Canopy	lbf (kN)	8,587 (38.2)	
CRAWLER				
Shoe Width		in (mm)	11.8" (300)	
Ground Pressure	Cab	Rubber	psi (kPa)	4.9 (33.8)
		Steel	psi (kPa)	5.0 (34.6)
	Canopy	Rubber	psi (kPa)	4.7 (32.4)
		Steel	psi (kPa)	4.8 (33.2)
DOZER BLADE				
Width x Height		ft-in (mm)	5' 7" (1,700) x 1' 2" (345)	
Working Ranges (height/depth)		ft-in (mm)	1' 4" (395) / 1' 1" (320)	
SWING SYSTEM				
Swing Motor		Axial piston motor		
Parking Brake		Oil disc brake, hydraulic operated automatically		
Swing Speed		min <sup>-1</sup> (rpm)	8.4	
Tail Swing Radius		ft-in (mm)	2' 10" (850)*	
Min. Front Swing Radius	Over the front	Cab	ft-in (mm)	7' 7" (2,320)
		Canopy	ft-in (mm)	7' 7" (2,320)
	At full boom swing	Cab	ft-in (mm)	6' 4" (1,930)
		Canopy	ft-in (mm)	6' 4" (1,930)
SIDE DIGGING MECHANISM				
Type		Boom swing		
Offset Angle	To the left	degree	70	
	To the right	degree	60	

\*Figures show the value with heavy counterweight.

## WORKING RANGES & DIMENSIONS



## 4-WAY BLADE

