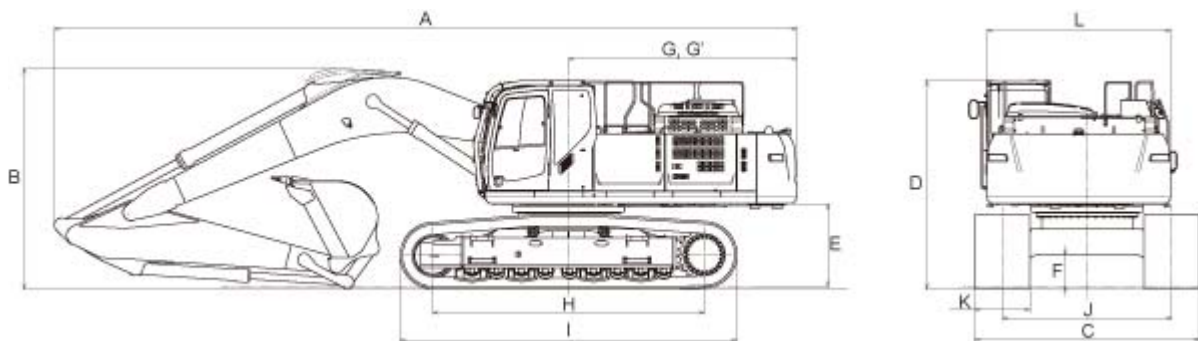


[Back to INDEX](#)

## SK500LC (SK500LC-9)

### DIMENSIONS



Unit: ft-in{mm}

	Short	Standard	Semi Long	Long		
Arm length	9'10" {3.00m}	11'4" {3.45m}	13'3" {4.04m}	16'1" {4.90m}	G Tail swing radius	12'3"{3,740}
A Overall length	39'8" {12,100}	39'6" {12,040}	39'8" {12,090}	39'10" {12,130}	G' Distance from center of swing to rear end	12'2"{3,700}
B Overall height (to top of boom)	12'4" {3,750}	11'9" {3,570}	12'2" {3,720}	14'4" {4,360}	H Tumbler distance	14'5"{4,400}
C Overall width		11'12"{3,650}			I Overall length of crawler	17'11"{5,450}
D Overall height (to top of cab)		11'1"{3,370}			J Track gauge	9'0"{2,750}
E Ground clearance of rear end*		4'5"{1,340}			K Shoe width	35.4"{900}
F Ground clearance*		20.1"{510}			L Overall width of upperstructure(With Catwalk / Without Catwalk)	11'5"{3,470} / 9'9"{2,980}

\* Without including height of shoe lug.

### MAIN SPECIFICATIONS

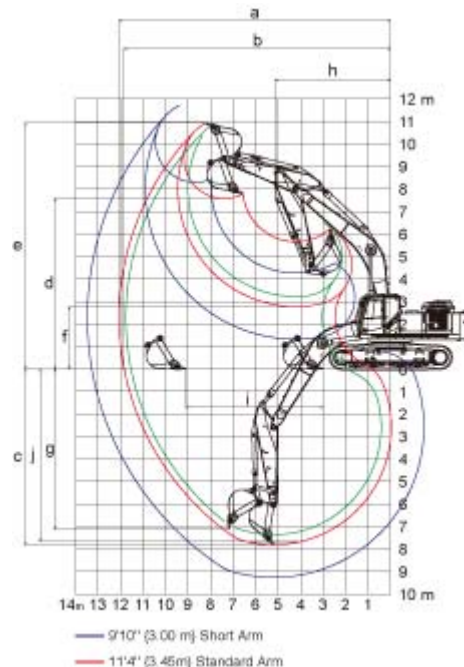
Model Name	SK500LC
Machine Type	SK500LC-9

<b>Operating Weight</b>	<b>lbs {kg}</b>	111,400{50,500}				
<b>Bucket</b>	<b>Bucket capacity</b>					
	<b>SAE heaped cu.yd.{m<sup>3</sup>}</b>	1.77 {1.35}	2.09 {1.6}	2.49 {1.90}	2.75 {2.10}	3.14 {2.40}
	<b>Bucket capacity</b>					
	<b>SAE Struck cu.yd.{m<sup>3</sup>}</b>	1.31 {1.00}	1.51 {1.15}	1.83 {1.40}	1.96 {1.50}	2.22 {1.70}
	<b>Opening width</b>					
<b>With side cutter</b>	48 {1,225}	54 {1,375}	66 {1,670}	69 {1,750}	78 {1,980}	
	<b>inches {mm}</b>					
<b>Opening width</b>						
<b>Without side cutter</b>	43 {1,100}	49 {1,250}	61 {1,550}	64 {1,630}	73 {1,860}	
	<b>inches {mm}</b>					
<b>Bucket weight</b>		2,760	2,930	3,330	3,440	3,730
	<b>lbs {kg}</b>	{1,250}	{1,330}	{1,510}	{1,560}	{1,690}
<b>Engine</b>	<b>Model</b>	HINO PC11CVC				
	<b>Type</b>	Direc tinjection, water-cooled, 4-cycle electrically-controlled rail system type diesel engine with turbocharger, intercooler (Complies with EU (NRMM) Stage IIIB, EPA Tier IV, and act on regulation, etc. of emission from non- road special motor vehicles (Japan))				
	<b>Rated power output</b>	363 hp {271kW} /1,850 rpm {min <sup>-1</sup> } (ISO 14396) 345 hp {257kW} /1,850 rpm {min <sup>-1</sup> } (ISO 9249)				
	<b>Fuel tank</b>	169.1 U.S.gal {640 L}				
	<b>Swing System</b>	<b>Swing speed</b>	7.8 rpm {min <sup>-1</sup> }			
<b>Travel System</b>	<b>Travel motors</b>	2 x axial-piston, two-step motors				
	<b>Travel shoes</b>	50 each side				
	<b>Travel speed</b>	3.4 / 2.1 mph {5.4 / 3.4 km/h}				
	<b>Drawbar pulling force</b>	93,300 lbs {415 kN} (SAE J 1309)				
	<b>Gradeability</b>	70 % {35°}				
<b>Hydraulic System</b>	<b>Pump Type</b>	Two variable displacement pumps + 1 gear pump				
	<b>Max. discharge flow</b>	2 x 97.8 U.S.gph {2 x 370L/min}, 1 x 7.9 U.S.gph {1 x 30L/min}				
<b>Hydraulic oil tank</b>	74.8 U.S.gal {283 L} tank oil level 142.1 U.S.gal {538 L} hydraulic system					

## ■ WORKING RANGES

Unit: ft-in{m}

Boom length		21'4" {6.50m}			
Range/Arm		Short 9'10" {3.00m}	Standard 11'4" {3.45m}	Semi Long 13'3" {4.04m}	Long 16'1" {4.90m}
a	Max. digging reach	38'7" {11.77}	39'7" {12.07}	41'4" {12.61}	44'3" {13.48}
b	Max. digging reach at ground level	37'10" {11.54}	38'10" {11.84}	40'8" {12.40}	43'7" {13.28}
c	Max. digging depth	24'2" {7.36}	25'7" {7.81}	27'7" {8.40}	30'5" {9.26}
d	Max. digging height	36'7" {11.16}	35'10" {10.93}	36'6" {11.14}	38'5" {11.70}
e	Max. dumping clearance	25'4" {7.72}	24'10" {7.58}	25'7" {7.79}	27'2" {8.29}
f	Min. dumping clearance	10'7" {3.22}	9'1" {2.77}	7'2" {2.18}	4'4" {1.32}
g	Max. vertical wall digging depth	21'11" {6.68}	23'4" {7.12}	24'7" {7.50}	27'7" {8.41}
h	Min. swing radius	17'3" {5.27}	16'10" {5.14}	17'1" {5.20}	17'5" {5.30}
i	Horizontal digging stroke at ground level	17'1" {5.21}	20'0" {6.10}	23'2" {7.07}	27'2" {8.28}
j	Digging depth for 8 feet flat bottom	23'8" {7.21}	25'2" {7.67}	27'2" {8.27}	30'0" {9.15}
Bucket capacity SAE heaped cu.yd. {m <sup>3</sup> }		2.75 {2.10}	2.49 {1.90}	2.09 {1.6}	1.77 {1.35}



**Digging Force** Unit: lbs {kN}

Arm length		Short 9'10" {3.00m}	Standard 11'4" {3.45m}	Semi Long 13'3" {4.04m}	Long 16'1" {4.90m}
Bucket digging force	SAE	52,400 {233}	52,600 {234}	52,600 {234}	52,400 {233}
		57,400 {255}*	57,500 {256}*	57,500 {256}	57,400 {255}*
	ISO	59,800 {266}	60,000 {267}	59,300 {264}	26,800 {263}
		65,500 {291}*	65,600 {292}*	65,000 {289}	64,800 {288}*
Arm crowding force	SAE	48,100 {214}	43,800 {195}	39,600 {176}	34,400 {153}
		52,600 {234}*	48,100 {214}*	43,200 {192}	37,600 {167}*
	ISO	50,200 {223}	45,600 {203}	40,700 {181}	35,300 {157}
		54,900 {244}*	49,900 {222}*	44,300 {197}	38,700 {172}*

\*Power Boost engaged.

This page may contain attachments and optional equipment that are not available in your area. And it may contain photographs of machines with specifications that differ from those of machines sold in your areas. Please consult your nearest Kobelco distributor for those items you require. Due to our policy of continuous product improvements all designs and specifications are subject to change without advance notice.



[Contact Us](#)



[Personal Information  
Protection Policy](#)



[Use of Website](#)