

# KOMATSU®

## PC88MR-10

*Tier 4 Final Engine*

### COMPACT HYDRAULIC EXCAVATOR



Photos may include optional equipment.

#### NET HORSEPOWER

65.5 HP @ 1950 rpm

48.8 kW @ 1950 rpm

#### OPERATING WEIGHT

18,739–19,290 lb

8500–8750 kg

# PC88MR



# WALK-AROUND

PC88MR-10



Photos may include optional equipment.

## NET HORSEPOWER

65.5 HP @ 1950 rpm  
48.8 kW @ 1950 rpm

## OPERATING WEIGHT

18,739–19,290 lb  
8500–8750 kg





## PERFORMANCE AND VERSATILITY

Standard value added features provide operators with Flexible Jobsite Performance.

New engine and hydraulic technology improves operational efficiency and lowers fuel consumption by up to 4%.\*\*

A powerful **Komatsu SAA4D95LE-6 engine** provides a net output of 48.8 kW **65.5 HP**. This engine is EPA Tier 4 Final emissions certified.

**Komatsu Diesel Oxidation Catalyst (KDOC)** reduces particulate matter using passive regeneration 100% of the time.  
**No AdBlue®/DEF or DPF is required.**

**Variable Flow Turbocharger** is designed to provide optimum air flow under all speed and load conditions.

**Komatsu's Closed-center Load Sensing System (CLSS)** provides quick response and smooth operation to maximize productivity.

**Enhanced working modes** are designed to match engine speed, pump delivery, and system pressure to the application.

### Large LCD color monitor panel:

- 7" high resolution screen
- Provides "Ecology Guidance" for fuel efficient operation
- Enhanced attachment control

### Rearview monitoring system (standard)

**Equipment Management Monitoring System (EMMS)** continuously monitors machine operation and vital systems to identify machine issues and assist with troubleshooting.

### Enhanced working environment

- High back, suspension operator seat
- Integrated ROPS cab design
- Cab meets ISO Level 1 Operator Protective Guard (OPG) top guard
- Aux jack and (2) 12V outlets

**Minimum Swing Radius** with swing boom allows the PC88MR-10 to fit in confined spaces at jobsites.



**Wide access service doors** provide easy access for ground level maintenance.

### Standard Auxiliary Piping for Attachments

### Operator Identification System

**Battery disconnect switch** allows a technician to disconnect the power supply before servicing the machine.

### Komatsu designed and manufactured components

**Convenient access** for maintenance and daily checks.

**Komatsu Auto Idle Shutdown** helps reduce idle time and operating costs.

### Standard 7'7" 2330mm blade

### Standard pattern change valve

### Two travel speeds

\* Thumb is not standard

\*\* All comparisons are to the prior model, unless otherwise stated.



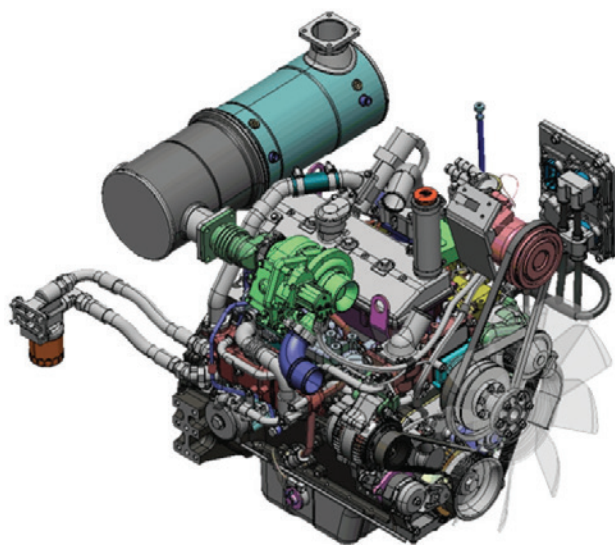
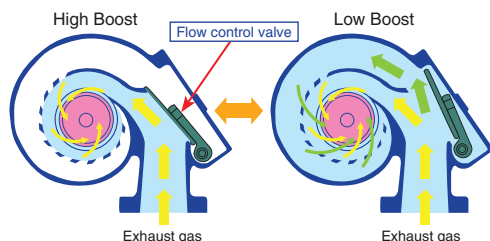
# PERFORMANCE FEATURES

## Environment-Friendly Engine

The Komatsu SAA4D95LE-6 engine is EPA Tier 4 Final emissions certified and provides exceptional performance while reducing fuel consumption. Based on Komatsu proprietary technologies developed over many years, this new diesel engine reduces exhaust gas particulate matter (PM) by more than 90% and nitrogen oxide (NOx) by more than 15%, compared to Komatsu Tier 4 Interim levels. Through the in-house development and production of engines, electronics, and hydraulic components, Komatsu has achieved great advancements in technology providing high levels of performance and efficiency in virtually all applications.

## Newly designed Variable Flow Turbocharger (VFT)

A newly designed variable flow turbocharger features simple and reliable technology that varies the intake airflow. This provides optimum air flow under all speed and load conditions producing cleaner exhaust gas without sacrificing power and performance.

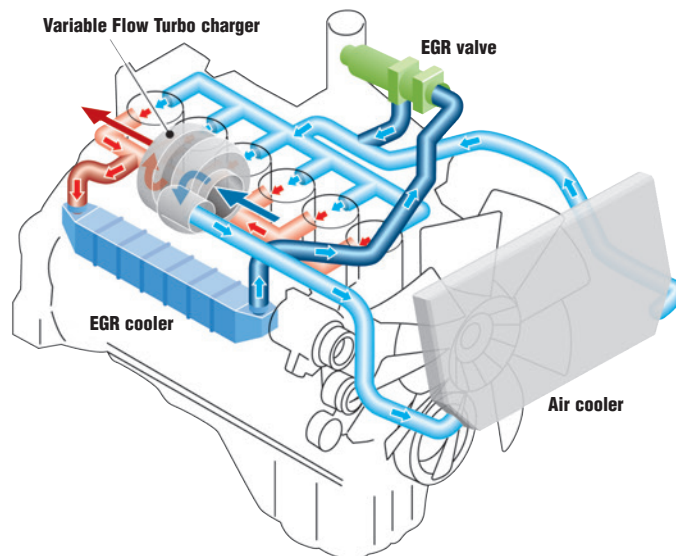


## Advanced Electronic Control System

The engine control system has been upgraded to effectively manage a variety of parameters such as the air flow rate, EGR gas flow rate, fuel injection parameters, and after-treatment functions. The new control system also provides enhanced diagnostic capabilities.

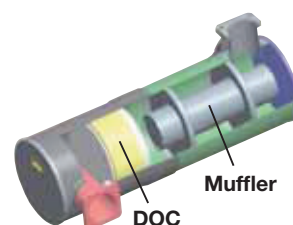
## Cooled Exhaust Gas Recirculation (EGR)

Cooled EGR, a technology that has been well proven in Komatsu Tier 3 and 4 Interim engines, reduces NOx emission to meet Tier 4 levels. The EGR system has increased capacity and uses larger and more robust components to ensure reliability for demanding work conditions.

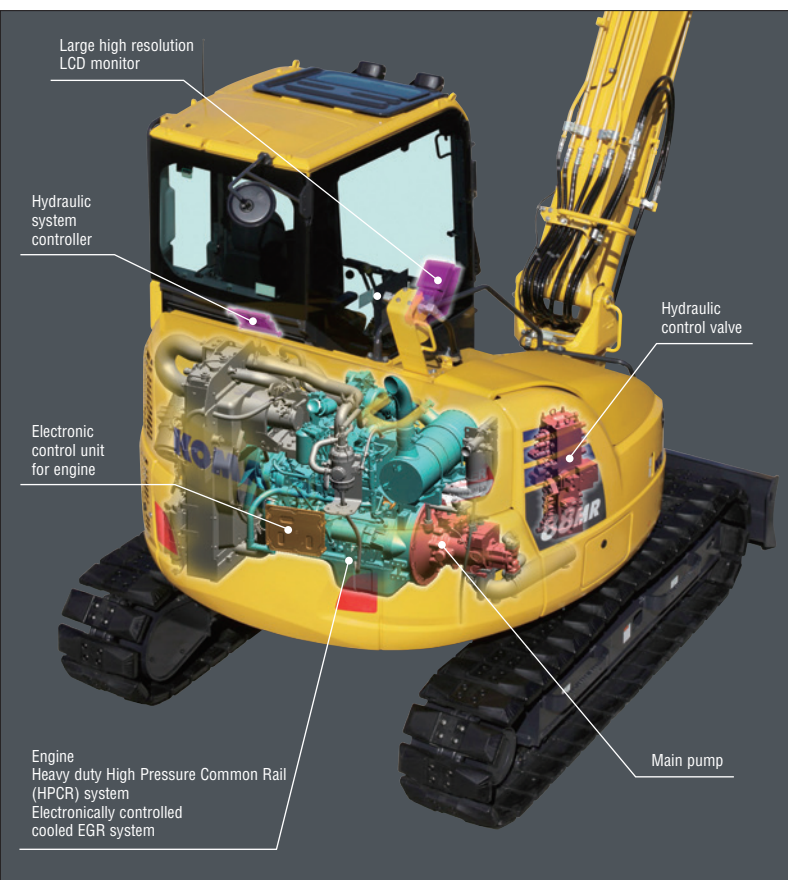


## Komatsu Diesel Oxidation Catalyst (KDOC)

The new Komatsu Diesel Oxidation Catalyst (KDOC) has an integrated design that does not interfere with daily operation. This smart and simplified system removes soot using **100% "passive regeneration"** without the need for a Diesel Particulate Filter. The KDOC is a simple design and does not have a scheduled service interval like a DPF and is designed for long life with no scheduled maintenance required. For owners, this means lower owning and operating costs due to less complexity and seamless operation.







## Efficient Hydraulic System

The PC88MR-10 uses a Closed-center Load Sensing System (CLSS) that improves fuel efficiency and provides quick response to the operator's demands.

The PC88MR-10 also introduces new technology to enhance the engine and hydraulic pump control. This total control system matches the engine and hydraulics at the most efficient point under different load conditions. There have also been improvements in the main valve and hydraulic circuit to reduce hydraulic loss, resulting in higher efficiency and lower fuel consumption.

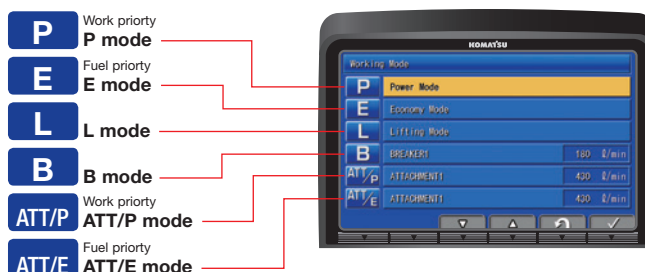
**Reduced Up To 4% Fuel consumption\***

\*vs PC88MR-8 Based on typical work pattern collected via KOMTRAX

## Working Mode Selection

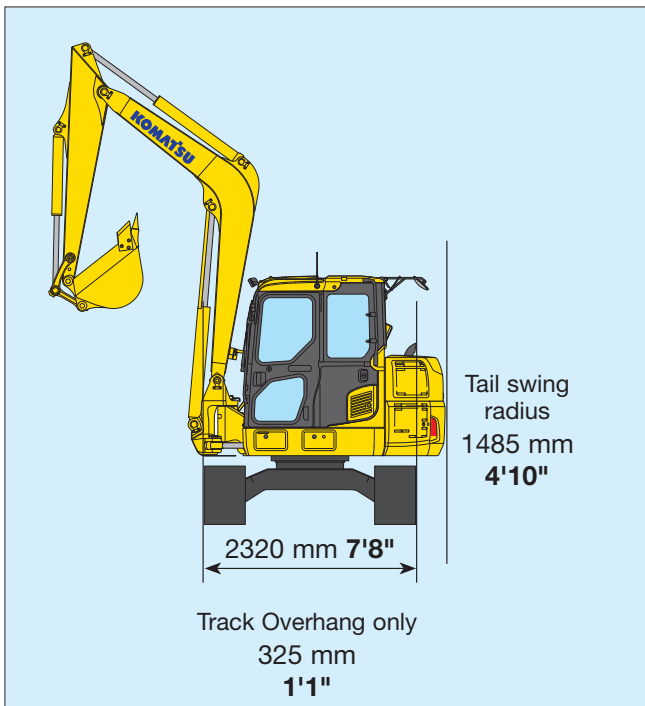
The PC88MR-10 excavator is equipped with six working modes (P, E, L, B, ATT/P and ATT/E). Each mode is designed to match engine speed, pump flow, and system pressure to the application. The PC88MR-10 features a new mode (ATT/E) which allows operators to run attachments while in Economy mode.

| Working Mode | Application             | Advantage   |
|--------------|-------------------------|---|
| <b>P</b>     | Power mode              | <ul style="list-style-type: none"> <li>•Maximum production/power</li> <li>•Fast cycle times</li> </ul>              |
| <b>E</b>     | Economy mode            | <ul style="list-style-type: none"> <li>•Good cycle times</li> <li>•Better fuel economy</li> </ul>                   |
| <b>L</b>     | Lifting mode            | <ul style="list-style-type: none"> <li>•Increases hydraulic pressure</li> </ul>                                     |
| <b>B</b>     | Breaker mode            | <ul style="list-style-type: none"> <li>•Optimum engine rpm, hydraulic flow</li> </ul>                               |
| <b>ATT/P</b> | Attachment Power mode   | <ul style="list-style-type: none"> <li>•Optimum engine rpm, hydraulic flow, 2-way</li> <li>•Power mode</li> </ul>   |
| <b>ATT/E</b> | Attachment Economy mode | <ul style="list-style-type: none"> <li>•Optimum engine rpm, hydraulic flow, 2-way</li> <li>•Economy mode</li> </ul> |





# OPERATION FEATURES



## True Tight Tail Performance

The versatile PC88MR-10 can fit into areas where a conventional machine cannot. The contoured cab design and convex sliding door allow the cab to swing within the same turning radius as the counterweight.

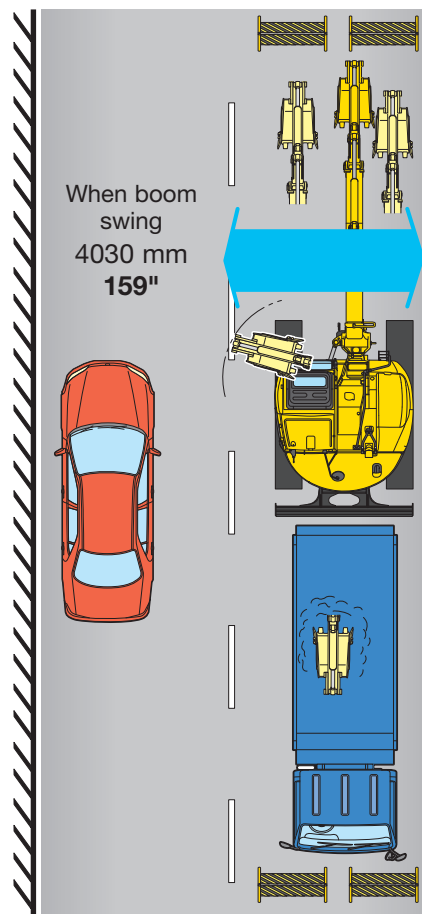
## Swing Boom

The swing boom allows the PC88MR-10 to work where a standard boom excavator could not.



## Ideal For Confined Applications

The PC88MR-10 is an ideal machine for applications for residential and roadwork. The tight tail design with the swing boom minimizes the amount of overhang when swinging over the side and makes it possible to work close to buildings, walls and other obstacles.

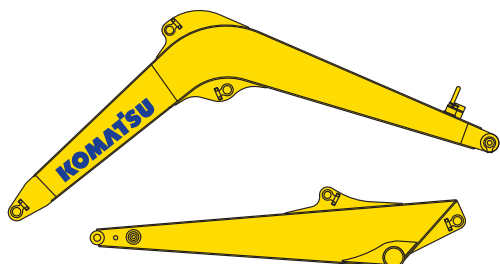




# RELIABILITY FEATURES

## High Rigidity Work Equipment

Booms and arms are constructed with thick plates of high tensile strength steel. In addition, these structures are designed with large cross-sectional areas and large one piece castings in the boom foot and the boom tip. The result is work equipment that exhibits long term durability and high resistance to bending and torsional stress.

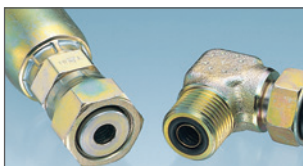


## Komatsu Designed Components

All of the major machine components such as the engine, hydraulic pumps, hydraulic motors, and control valves are exclusively designed and manufactured by Komatsu.

## O-Ring Face Seals

Flat face-to-face O-ring seals are used to securely seal hydraulic hose connections.



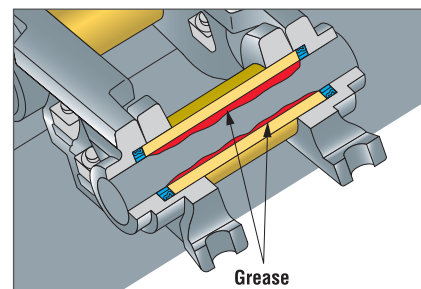
## Durable Frame Structure

The revolving frame, center frame, and undercarriage are designed using the most advanced three dimensional CAD and FEM analysis technology.



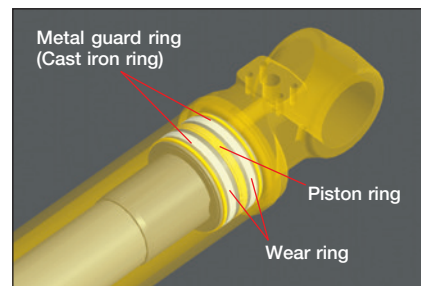
## Grease Sealed Track

The PC88MR-10 uses grease sealed tracks for extended undercarriage life.



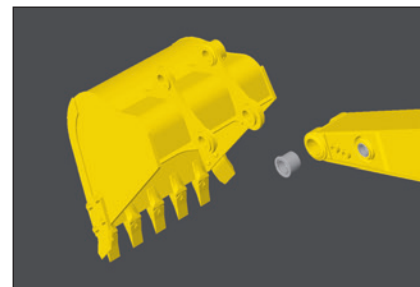
## Metal Guard Rings

The PC88MR-10 uses metal guard rings to protect all of the hydraulic cylinders and improve long term reliability.



## Durable Arm Tip Bushing

The end face of the arm tip bushing provides high resistance to seizure and wear.





# WORKING ENVIRONMENT

PC88MR-10



## Newly Designed Wide Spacious Cab

The newly designed wide spacious cab features a high back, fully adjustable seat with a reclining backrest. The console and seat have an integrated design so that they move together and provide additional comfort for the operator.

The new higher capacity operator seat has been enhanced to provide more comfort.

- Integrated Seat
- Console Mounted Arm Rests

## Auxiliary Input (MP3 Jack)

By connecting an auxiliary device such as an MP3 player to the auxiliary input, the operator can hear the sound through the speakers installed in the cab.



## Pressurized Cab

The air conditioner, air filter, and a higher internal cab air pressure minimize the amount of external dust that enters the cab.

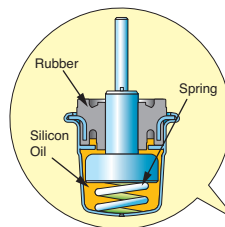
## Automatic Air Conditioner

The automatic air conditioner allows the operator to easily and precisely set the cab atmosphere using the large LCD color monitor panel. The bi-level control function improves air flow and keeps the inside of the cab comfortable throughout the year.



## Low Vibration with Viscous Cab Mounts

The PC88MR-10 uses viscous mounts for the cab that incorporate a longer stroke and the addition of a spring. The cab damper mounting combined with a high rigidity deck reduces vibration at the operator's seat.







## Large High Resolution LCD Monitor Panel

A new large, user-friendly, high resolution LCD color monitor enables accurate and smooth work. Screen visibility and resolution are further improved compared to the previous LCD monitor panel. The switches and function keys are easy to operate and provide simple navigation through the monitor screens.

Data is displayed in 25 languages to support operators around the world.

### Indicators

- |                                  |                                   |
|----------------------------------|-----------------------------------|
| 1 Auto-decelerator               | 5 Hydraulic oil temperature gauge |
| 2 Working mode                   | 6 Fuel gauge                      |
| 3 Travel speed                   | 7 Eco-gauge                       |
| 4 Engine water temperature gauge | 8 Fuel consumption gauge          |
|                                  | 9 Function switches menu          |

### Basic operation switches

- |                         |                     |
|-------------------------|---------------------|
| 1 Auto-decelerator      | 4 Buzzer cancel     |
| 2 Working mode selector | 5 Wiper             |
| 3 Traveling selector    | 6 Windshield washer |

## Operational Information

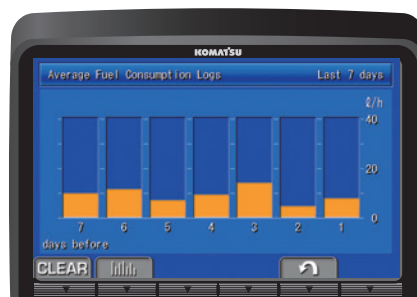
The monitor panel provides operational advice to the operator to help improve machine efficiency and lower fuel consumption. The operator can access the ecology guidance menu to check the Operation Records, Ecology Guidance Records, and Average Fuel Consumption records.

## Improved Attachment Control

The PC88MR-10 is capable of storing up to ten different attachments in the new monitor panel. The name of each attachment can be changed for better tool management. Hydraulic flow rates can be easily adjusted for one-way and two-way flow attachments.



Ecology Guidance



Average Fuel Consumption Logs



Attachment Setting Screen



Operation Records



Attachment Settings



# MAINTENANCE FEATURES

## Easy Access Coolers

The radiator and oil cooler are side-by-side modules which simplifies cleaning, removing, and installing.



## Battery Disconnect Switch

A standard battery disconnect switch allows a technician to disconnect the power supply and lock out before servicing the machine.



## Large Tool Box

Large tool box provides plenty of space. Grease gun storage space is also provided.



## Long Life Oils, Filters

High performance filters are used in the hydraulic circuit and engine. By increasing the oil and filter replacement intervals, maintenance costs can be significantly reduced.



Hydraulic oil filter  
(Ecology-white element)

|                                   |                         |
|-----------------------------------|-------------------------|
| Engine oil &<br>Engine oil filter | every <b>500</b> hours  |
| Hydraulic oil                     | every <b>5000</b> hours |
| Hydraulic oil filter              | every <b>1000</b> hours |

## Extended Work Equipment Greasing Intervals

Special hard material is used for the work equipment bushings to lengthen the greasing intervals. All work equipment bushing lubrication intervals, except the arm tip and bucket linkage, are 500 hours, reducing maintenance costs.

## High Efficiency Fuel Filters

Komatsu's pre-filter and water separator comes with a built in priming pump. A new high efficiency dual element fuel filter provides twice the filtration capacity.





### Equipment Management Monitoring System (EMMS)

The PC88MR-10 features an advanced diagnostic system that continuously monitors the machine's vital systems. EMMS tracks maintenance items, provides advanced troubleshooting tools, reduces diagnostic times, and displays error codes. Through continuous monitoring, the EMMS helps identify issues before they become worse and allows the operator to concentrate on the work at hand.

### Maintenance Tracking

When the machine approaches or exceeds the oil and filter replacement interval, the monitor panel will display lights to inform the operator.

| Maintenance                   | Interval | Remain |
|-------------------------------|----------|--------|
| Air Cleaner Cleaning / Change | —        | —      |
| Engine Oil Change             | 500 h    | 488 h  |
| Engine Oil Filter Change      | 500 h    | 488 h  |
| Fuel Main Filter Change       | 1000 h   | 988 h  |
| Fuel Pre Filter Change        | 500 h    | 488 h  |

### Abnormalities Display with Code

When an abnormality occurs an error code is displayed on the monitor. When an important code is displayed, a caution lamp blinks and warning buzzer sounds to alert the operator to take action. The monitor also stores a record of abnormalities for more effective troubleshooting.



### Advanced Monitoring System

The monitor provides advanced monitoring diagnostics to assist with troubleshooting and reduce costly downtime.

| Monitoring / Pre-defined(01/14) |         |
|---------------------------------|---------|
| 01002 Engine Speed              | 0 r/min |
| 04107 Coolant Temperature       | 0 °C    |
| 37212 Engine Oil Switch         | ON      |
| 18400 Intake Temperature        | 0.0 °C  |
| 04401 Hydr. Oil Temperature     | 0.0 °C  |
| 03203 Battery Power Supply      | 0.0 V   |



Photos may include optional equipment



# GENERAL FEATURES

## ROPS Cab Design

The PC88MR-10 is equipped with an integrated ROPS cab as standard equipment. The cab also meets OPG Top Guard Level 1 requirements.



## Slip Resistant Plates

Durable slip resistant plates maintain excellent foot traction.



## Standard Blade

Every PC88MR-10 comes standard with a 2332mm 7'7" blade. A wide angle blade is also available as an option.



## Rear View Monitoring System

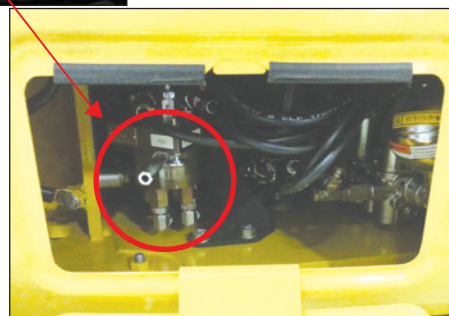
The operator can view the rear of the machine with a color monitor screen.



Rear view image on monitor

## Pattern Change Valve Standard

A pattern change valve is conveniently located below the cab, making switching from excavator controls to backhoe controls quick and easy.





# KOMTRAX EQUIPMENT MONITORING

GET THE WHOLE STORY WITH  
**KOMTRAX®**

## ✓ WHAT

- KOMTRAX is Komatsu's remote equipment monitoring and management system
- KOMTRAX **continuously monitors and records** machine health and operational data
- Information such as fuel consumption, utilization, and a detailed history **aids in making repair or replacement decisions**

## ✓ WHEN

- Know when your machines are **running or idling** and make decisions that will improve your fleet utilization
- Detailed movement records ensure you know when and where your equipment is moved
- Up to date records allow you to **know when maintenance was done** and help you plan for future maintenance needs

## ✓ WHERE

- KOMTRAX data **can be accessed virtually anywhere** through your computer, the web or your smart phone
- Automatic alerts keep fleet managers up to date on the latest machine notifications

## ✓ WHY

- Knowledge is power - **make informed decisions** to manage your fleet better
- Knowing your idle time and fuel consumption will help maximize your machine efficiency
- **Take control of your equipment** - any time, anywhere

## ✓ WHO

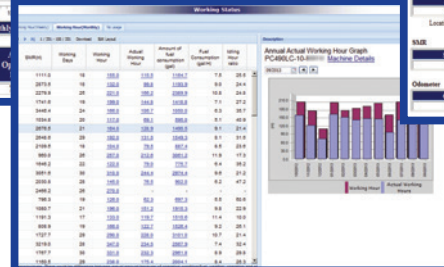
- KOMTRAX is **standard** equipment on all Komatsu construction products



### Monthly Operational Analysis



### Fleet Working Status



### Location/Hours/Working



**KOMTRAX®**

For construction and compact equipment.

**KOMTRAX Plus™**

For production and mining class machines.



# KOMATSU PARTS & SERVICE SUPPORT



## Komatsu CARE – Complimentary Scheduled Maintenance

- PM services for the earlier of 3 years / 2000 hours
- Performed by factory certified technicians
- Komatsu Genuine parts and fluids
- Significantly lowers your cost of ownership while maintaining high uptime and reliability
- Increases resale value and provides detailed maintenance records
- Extended PM services can be purchased beyond the complimentary period to provide additional peace of mind and maximize uptime



## Komatsu CARE – Extended Coverage

- Extended Coverage can provide peace of mind by protecting customers from unplanned expenses that effect cash flow
- Purchasing extended coverage locks-in the cost of covered parts and labor for the coverage period and helps turn these into fixed costs



## Komatsu Parts Support

- 24/7/365 to fulfill your parts needs
- 9 parts Distribution Centers strategically located across the U.S. and Canada
- Distributor network of more than 300 locations across U.S. and Canada to serve you
- Online part ordering through Komatsu eParts
- Remanufactured components with same-as-new warranties at a significant cost reduction



## Komatsu Oil and Wear Analysis (KOWA)

- KOWA detects fuel dilution, coolant leaks, and measures wear metals
- Proactively maintain your equipment
- Maximize availability and performance
- Can identify potential problems before they lead to major repairs
- Reduce life cycle cost by extending component life



## SPECIFICATIONS



## ENGINE

|  |  |
|--|--|
| Model.....   | Komatsu SAA4D95LE-6*                                   |
| Type.....  | Water-cooled, 4-cycle, direct injection                |
| Aspiration...Variable flow, turbocharged, air-to-air aftercooled EGR |  |
| Number of cylinders.....   | 4  |
| Bore.....  | 95 mm <b>3.74"</b>                                     |
| Stroke.....  | 115 mm <b>4.52"</b>                                    |
| Piston displacement.....   | 3.26 ltr <b>199 in<sup>3</sup></b>                     |
| Horsepower:  |  |
| SAE J1995.....   | Gross 50.7 kW <b>67.9 HP</b>                           |
| ISO 9249 / SAE J1349.....  | Net 48.8 kW <b>65.5 HP</b>                             |
| Rated rpm.....   | 1950   |
| Governor.....  | All-speed control, electronic                          |
| Lubrication system:  |  |
| Method.....  | Gear pump, force-lubrication                           |
| Filter.....  | Full-flow  |
| Air cleaner.....   | Air cleaner, double element<br>and auto dust evacuator |



## HYDRAULICS

Type .....HydrauMind (Hydraulic Mechanical Intelligence New Design) system, closed-center system with load sensing valve and pressure compensated valve

Main pumps:

|                    |   |
|--------------------|---|
| Pumps for.....     | Boom, arm, bucket, and travel circuits      |
| Type.....          | Variable capacity piston type, axial piston |
| Maximum flow ..... | 160 ltr/min <b>42.2 gal/min</b>             |
| Pumps for.....     | ..... Swing and blade                       |
| Type.....          | Fixed displacement gear                     |
| Maximum flow ..... | 70 ltr/min <b>18.5 gal/min</b>              |

Hydraulic motors:

Travel ..... 2 x piston motor with parking brake  
Swing ..... 1 x axial piston motor with swing holding brake

Relief valve setting:

|                            |          |                         |                  |
|----------------------------|----------|-------------------------|------------------|
| Implement circuits .....   | 26.5 MPa | 270 kgf/cm <sup>2</sup> | <b>3,844 psi</b> |
| Swing circuit .....        | 21.1 MPa | 215 kgf/cm <sup>2</sup> | <b>3,060 psi</b> |
| Pilot circuit .....        | 3.2 MPa  | 33 kgf/cm <sup>2</sup>  | <b>464 psi</b>   |
| Blade circuit (Raise)..... | 12.7 MPa | 130 kgf/cm <sup>2</sup> | <b>1,842 psi</b> |
| Blade circuit (Lower)..... | 21.1 MPa | 215 kgf/cm <sup>2</sup> | <b>3,060 psi</b> |

Hydraulic cylinders:

(Number of cylinders – bore x stroke x rod diameter)

Boom 2-115 mm x 988 mm x 65 mm **4.53" x 38.9" x 2.56"**  
 Arm .....1-100 mm x 861 mm x 60 mm **3.9" x 33.9" x 2.36"**  
 Bucket 1-90 mm x 710 mm x 55 mm **3.54" x 27.95" x 2.17"**  
 Swing .1-120 mm x 638 mm x 60 mm **4.72" x 25.12" x 2.36"**  
 Blade..1-130 mm x 200 mm x 65 mm **5.12" x 7.87" x 2.56"**

Auxiliary hydraulics:

|                               |             |                     |
|-------------------------------|-------------|---------------------|
| Auxiliary hydraulic flow..... | 125 ltr/min | <b>33.0 gal/min</b> |
| Relief .....                  | 26.51 MPa   | <b>3,830 psi</b>    |
| Breaker mode.....             | 80 ltr/min  | <b>21.1 gal/min</b> |
| Relief in breaker mode.....   | 17.17 MPa   | <b>2,490 psi</b>    |



## SWING SYSTEM

Driven by..... Hydraulic motor  
Swing reduction..... Planetary gear  
Swing circle lubrication..... Grease-bathed  
Swing lock..... Mechanical disc brake  
Swing speed..... 10 rpm



## UNDERCARRIAGE

|   |             |
|---|-------------|
| Center frame .....                          | X-frame leg |
| Track frame .....                           | Box-section |
| Track type .....                            | Sealed      |
| Track adjuster .....                        | Hydraulic   |
| Number of shoes (each side) .....           | 39          |
| Number of carrier rollers (each side) ..... | 1           |
| Number of track rollers (each side) .....   | 5           |



## COOLANT & LUBRICANT CAPACITY (REFILLING)

|                             |          |                      |
|-----------------------------|----------|----------------------|
| Fuel tank .....             | 125 ltr  | <b>33 U.S. gal</b>   |
| Radiator .....              | 13 ltr   | <b>3.43 U.S. gal</b> |
| Engine.....                 | 11.5 ltr | <b>3.04 U.S. gal</b> |
| Final drive, each side..... | 1.1 ltr. | <b>.29 U.S. gal</b>  |
| Swing drive .....           | 2.8 ltr  | <b>.74 U.S. gal</b>  |
| Hydraulic tank.....         | 56 ltr   | <b>14.8 U.S. gal</b> |



### OPERATING WEIGHT (APPROXIMATE)

Operating weight includes 3405 mm **11'2"** one-piece boom, 2100 mm **6'11"** arm, SAE heaped 0.2 m<sup>3</sup> **0.26 yd<sup>3</sup>** bucket, blade, rated capacity of lubricants, coolant, full fuel tank, operator, and standard equipment.

| Track Shoes                         | Operating Weight            | Ground Pressure                                       |
|-------------------------------------|-----------------------------|---|
| Road liner<br>450 mm <b>18"</b>     | 8720 kg<br><b>19,224 lb</b> | 38.2 kPa / 0.39 kg/cm <sup>2</sup><br><b>5.54 psi</b> |
| Triple grouser<br>450 mm <b>18"</b> | 8580 kg<br><b>18,916 lb</b> | 38.2 kPa / 0.39 kg/cm <sup>2</sup><br><b>5.54 psi</b> |
| Triple grouser<br>600 mm <b>24"</b> | 8750 kg<br><b>19,290 lb</b> | 29.4 kPa / 0.30 kg/cm <sup>2</sup><br><b>4.26 psi</b> |
| Rubber shoe<br>450 mm <b>18"</b>    | 8500 kg<br><b>18,739 lb</b> | 37.3 kPa / 0.38 kg/cm <sup>2</sup><br><b>5.41 psi</b> |



## WORKING FORCES

|                   | Arm Length           | 2100 mm 6'11"                         |
|-------------------|----------------------|---------------------------------------|
| <b>ISO rating</b> | Bucket digging force | 61.3 kN / 6250 kgf / <b>13,781 lb</b> |
|                   | Arm crowd force      | 36.3 kN / 3700 kgf / <b>8,161 lb</b>  |
| <b>SAE rating</b> | Bucket digging force | 53.3 kN / 5440 kgf / <b>11,982 lb</b> |
|                   | Arm crowd force      | 34.3 kN / 3500 kgf / <b>7,711 lb</b>  |



## DRIVES AND BRAKES

|                                 |                                    |
|---------------------------------|------------------------------------|
| Steering control.....           | Two levers with pedals             |
| Drive method .....              | Fully hydrostatic                  |
| Maximum drawbar pull .....      | 66.9 kN 6820 kgf <b>15,040 lbf</b> |
| Maximum travel speed: High..... | 5 km/h <b>3.1 mph</b>              |
| Low .....                       | 3 km/h <b>1.9 mph</b>              |
| Service brake.....              | Hydraulic lock                     |
| Parking brake.....              | Mechanical disc                    |



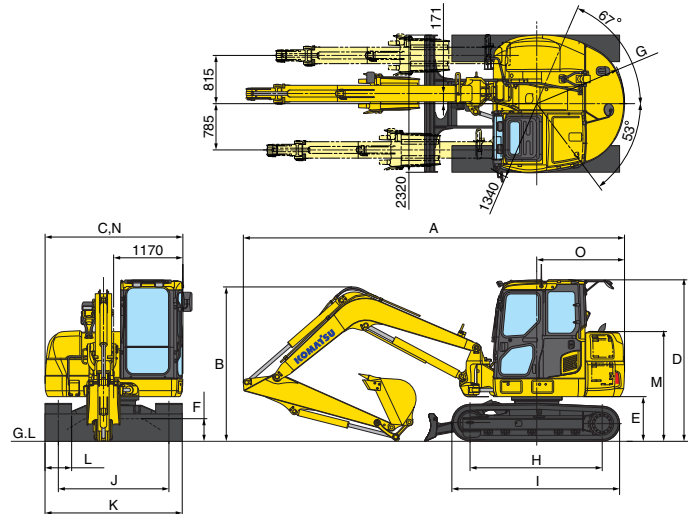
# SPECIFICATIONS



## DIMENSIONS

|          |                                    |         |       |
|----------|------------------------------------|---------|-------|
|          | Boom length                        | 3405 mm | 11'2" |
| <b>A</b> | Overall length                     | 6430 mm | 21'1" |
| <b>B</b> | Overall height (to top of boom)    | 2615 mm | 8'7"  |
| <b>C</b> | Overall width                      | 2330 mm | 7'8"  |
| <b>D</b> | Overall height (to top of cab)*    | 2760 mm | 9'1"  |
| <b>E</b> | Ground clearance, counterweight    | 785 mm  | 2'7"  |
| <b>F</b> | Ground clearance, minimum          | 410 mm  | 1'4"  |
| <b>G</b> | Tail swing radius                  | 1485 mm | 4'10" |
| <b>H</b> | Track length on ground             | 2235 mm | 7'4"  |
| <b>I</b> | Track length*                      | 2890 mm | 9'6"  |
| <b>J</b> | Track gauge                        | 1870 mm | 6'2"  |
| <b>K</b> | Width of crawler                   | 2320 mm | 7'7"  |
| <b>L</b> | Shoe width                         | 450 mm  | 1'6"  |
| <b>M</b> | Machine engine hood height         | 1885 mm | 6'2"  |
| <b>N</b> | Machine cab width                  | 2330 mm | 7'8"  |
| <b>O</b> | Distance, swing center to rear end | 1485 mm | 4'10" |

\* : Dimension of the machine with the triple grouser shoes.

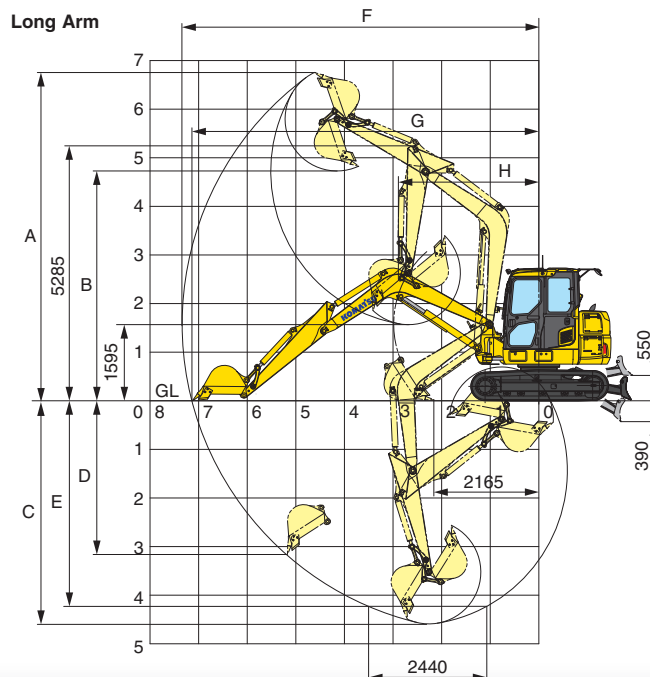


## BACKHOE BUCKET, ARM AND BOOM COMBINATIONS

| Bucket Capacity (heaped) |          |         |          | Width           |       |              |       | Weight |          | Number of Teeth | Arm Length      |
|--------------------------|----------|---------|----------|-----------------|-------|--------------|-------|--------|----------|-----------------|-----------------|
| SAE, PCSA                |          | CECE    |          | Without Cutters |       | With Cutters |       |        |          |                 | 2100 mm (6'11") |
| 0.09 m³                  | 0.12 yd³ | 0.08 m³ | 0.10 yd³ | 350 mm          | 13.7" | 450 mm       | 17.7" | 145 kg | 319.7 lb | 3               | 0               |
| 0.12 m³                  | 0.16 yd³ | 0.11 m³ | 0.14 yd³ | 450 mm          | 17.7" | 550 mm       | 21.7" | 160 kg | 352.7 lb | 3               | 0               |
| 0.20 m³                  | 0.26 yd³ | 0.18 m³ | 0.24 yd³ | 550 mm          | 21.7" | 650 mm       | 25.6" | 185 kg | 407.9 lb | 3               | 0               |

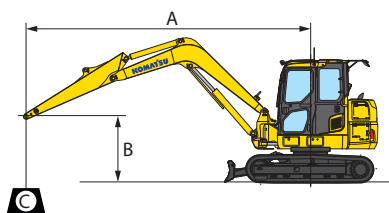


## WORKING RANGE



|                   | Arm Length                                    | 2100 mm                        | 6'11" |
|-------------------|---|--------------------------------|-------|
| <b>A</b>          | Max. digging height                           | 6800 mm                        | 22'4" |
| <b>B</b>          | Max. dumping height                           | 4770 mm                        | 15'8" |
| <b>C</b>          | Max. digging depth                            | 4565 mm                        | 15'0" |
| <b>D</b>          | Max. vertical wall digging depth              | 3115 mm                        | 10'3" |
| <b>E</b>          | Max. digging depth of cut for 8' level bottom | 4200 mm                        | 13'9" |
| <b>F</b>          | Max. digging reach                            | 7345 mm                        | 24'1" |
| <b>G</b>          | Max. digging reach at ground level            | 7135 mm                        | 23'5" |
| <b>H</b>          | Min. swing radius                             | 2900 mm                        | 9'6"  |
|                   | (When boom swing)                             | (2545 mm)                      | 8'4"  |
| <b>SAE rating</b> | Bucket digging force                          | 53.3 kN<br>5440 kg / 11,982 lb |       |
|                   | Arm crowd force                               | 34.3 kN<br>3500 kgf / 7,710 lb |       |
| <b>ISO rating</b> | Bucket digging force                          | 61.3 kN<br>6250 kg / 13,780 lb |       |
|                   | Arm crowd force                               | 36.3 kN<br>3700 kgf / 8,160 lb |       |




**LIFTING CAPACITY WITH LIFTING MODE**


A: Reach from swing center  
 B: Bucket hook height  
 C: Lifting capacity  
 Cf: Rating over front  
 Cs: Rating over side  
 ⊗ : Rating at maximum reach

Conditions :  
 • 3405 mm **11' 2"** one-piece boom  
 • No bucket  
 • Blade on ground

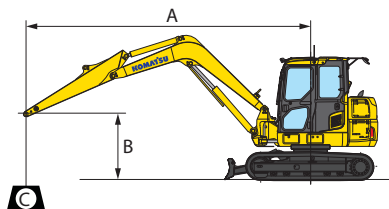
 Arm: 2100 mm **6'11"**

 Shoes: 450 mm **18"** roadliner

Unit: kg lb

| B \ A                  | 1.5 m <b>4'11"</b>      |                         | 3.0 m <b>10'</b>         |                     | 4.5 m <b>14'9"</b>      |                     | ⊗ MAX                   |                     |
|------------------------|-------------------------|-------------------------|--------------------------|---------------------|-------------------------|---------------------|-------------------------|---------------------|
|                        | Cf                      | Cs                      | Cf                       | Cs                  | Cf                      | Cs                  | Cf                      | Cs                  |
| 5 m<br><b>16' 5"</b>   |                         |                         |                          |                     |                         |                     | * 1520<br>* <b>3370</b> | 1340<br><b>2950</b> |
| 3 m<br><b>10'</b>      |                         |                         |                          |                     | * 1630<br>* <b>3600</b> | 1600<br><b>3540</b> | * 1630<br>* <b>3610</b> | 970<br><b>2140</b>  |
| 0 m<br><b>0'</b>       |                         |                         | * 4230<br>* <b>9330</b>  | 2400<br><b>5300</b> | * 3080<br>* <b>6790</b> | 1390<br><b>3070</b> | * 2130<br>* <b>4700</b> | 900<br><b>1990</b>  |
| -2.0 m<br><b>6' 7"</b> | * 4460<br>* <b>9840</b> | * 4460<br>* <b>9840</b> | * 5650<br>* <b>12460</b> | 2400<br><b>5290</b> | * 3270<br>* <b>7210</b> | 1350<br><b>2990</b> | * 2680<br>* <b>5910</b> | 1140<br><b>2510</b> |

\*Load is limited by hydraulic capacity rather than tipping. Ratings are based on ISO standard No. 10567. Rated loads do not exceed 87% of hydraulic lift capacity or 75% of tipping load.


**LIFTING CAPACITY WITH LIFTING MODE**


A: Reach from swing center  
 B: Bucket hook height  
 C: Lifting capacity  
 Cf: Rating over front  
 Cs: Rating over side  
 ⊗ : Rating at maximum reach

Conditions :  
 • 3405 mm **11' 2"** one-piece boom  
 • No bucket  
 • Blade on ground

 Arm: 2100 mm **6'11"**

 Shoes: 450 mm **18"** rubber shoe

Unit: kg lb

| B \ A                  | 1.5 m <b>4'11"</b>      |                         | 3.0 m <b>10'</b>         |                     | 4.5 m <b>14'9"</b>      |                     | ⊗ MAX                   |                     |
|------------------------|-------------------------|-------------------------|--------------------------|---------------------|-------------------------|---------------------|-------------------------|---------------------|
|                        | Cf                      | Cs                      | Cf                       | Cs                  | Cf                      | Cs                  | Cf                      | Cs                  |
| 5 m<br><b>16' 5"</b>   |                         |                         |                          |                     |                         |                     | * 1520<br>* <b>3370</b> | 1300<br><b>2880</b> |
| 3 m<br><b>10'</b>      |                         |                         |                          |                     | * 1630<br>* <b>3600</b> | 1560<br><b>3450</b> | * 1630<br>* <b>3610</b> | 940<br><b>2070</b>  |
| 0 m<br><b>0'</b>       |                         |                         | * 4230<br>* <b>9330</b>  | 2330<br><b>5150</b> | * 3080<br>* <b>6790</b> | 1350<br><b>2970</b> | * 2130<br>* <b>4700</b> | 870<br><b>1920</b>  |
| -2.0 m<br><b>6' 7"</b> | * 4460<br>* <b>9840</b> | * 4460<br>* <b>9840</b> | * 5650<br>* <b>12460</b> | 2320<br><b>5130</b> | * 3270<br>* <b>7210</b> | 1310<br><b>2900</b> | * 2680<br>* <b>5910</b> | 1100<br><b>2430</b> |

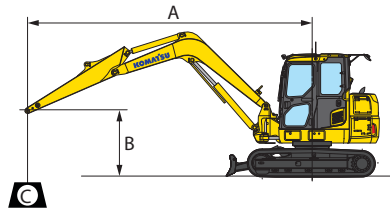
\*Load is limited by hydraulic capacity rather than tipping. Ratings are based on ISO standard No. 10567. Rated loads do not exceed 87% of hydraulic lift capacity or 75% of tipping load.



# SPECIFICATIONS



## LIFTING CAPACITY WITH LIFTING MODE



- A: Reach from swing center
- B: Bucket hook height
- C: Lifting capacity
- Cf: Rating over front
- Cs: Rating over side
- ⊗: Rating at maximum reach

Conditions :

- 3405 mm 11' 2" one-piece boom
- No bucket
- Blade on ground

Arm: 2100 mm 6'11"

Shoes: 450 mm 18" triple grouser

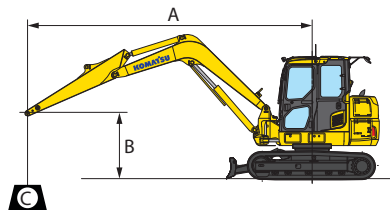
Unit: kg lb

| B               | A                |                  | 3.0 m 10'         |              | 4.5 m 14'9"      |              | ⊗ MAX            |              |
|-----------------|------------------|------------------|-------------------|--------------|------------------|--------------|------------------|--------------|
|                 | Cf               | Cs               | Cf                | Cs           | Cf               | Cs           | Cf               | Cs           |
| 5 m<br>16' 5"   |                  |                  |                   |              |                  |              | * 1520<br>* 3370 | 1310<br>2900 |
| 3 m<br>10'      |                  |                  |                   |              | * 1630<br>* 3600 | 1580<br>3480 | * 1630<br>* 3610 | 950<br>2100  |
| 0 m<br>0'       |                  |                  | * 4230<br>* 9330  | 2360<br>5200 | * 3080<br>* 6790 | 1360<br>3010 | * 2130<br>* 4700 | 880<br>1950  |
| -2.0 m<br>6' 7" | * 4460<br>* 9840 | * 4460<br>* 9840 | * 5650<br>* 12460 | 2350<br>5180 | * 3270<br>* 7210 | 1330<br>2930 | * 2680<br>* 5910 | 1110<br>2460 |

\*Load is limited by hydraulic capacity rather than tipping. Ratings are based on ISO standard No. 10567. Rated loads do not exceed 87% of hydraulic lift capacity or 75% of tipping load.



## LIFTING CAPACITY WITH LIFTING MODE



- A: Reach from swing center
- B: Bucket hook height
- C: Lifting capacity
- Cf: Rating over front
- Cs: Rating over side
- ⊗: Rating at maximum reach

Conditions :

- 3405 mm 11' 2" one-piece boom
- No bucket
- Blade on ground

Arm: 2100 mm 6'11"

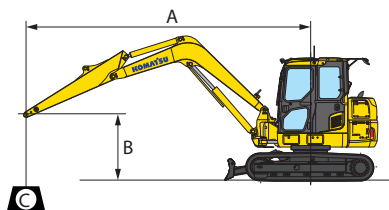
Shoes: 600 mm 24" triple grouser

Unit: kg lb

| B               | A                |                  | 3.0 m 10'         |              | 4.5 m 14'9"      |              | ⊗ MAX            |              |
|-----------------|------------------|------------------|-------------------|--------------|------------------|--------------|------------------|--------------|
|                 | Cf               | Cs               | Cf                | Cs           | Cf               | Cs           | Cf               | Cs           |
| 5 m<br>16' 5"   |                  |                  |                   |              |                  |              | * 1520<br>* 3370 | 1340<br>2970 |
| 3 m<br>10'      |                  |                  |                   |              | * 1630<br>* 3600 | 1610<br>3560 | * 1630<br>* 3610 | 970<br>2150  |
| 0 m<br>0'       |                  |                  | * 4230<br>* 9330  | 2410<br>5330 | * 3080<br>* 6790 | 1390<br>3080 | * 2130<br>* 4700 | 900<br>1990  |
| -2.0 m<br>6' 7" | * 4460<br>* 9840 | * 4460<br>* 9840 | * 5650<br>* 12460 | 2410<br>5310 | * 3270<br>* 7210 | 1360<br>3000 | * 2680<br>* 5910 | 1140<br>2520 |

\*Load is limited by hydraulic capacity rather than tipping. Ratings are based on ISO standard No. 10567. Rated loads do not exceed 87% of hydraulic lift capacity or 75% of tipping load.




**LIFTING CAPACITY WITH LIFTING MODE**


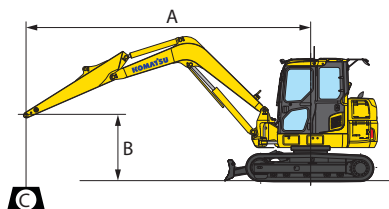
A: Reach from swing center  
 B: Bucket hook height  
 C: Lifting capacity  
 Cf: Rating over front  
 Cs: Rating over side  
 ⊗: Rating at maximum reach

Conditions :  
 • 3405 mm **11' 2"** one-piece boom  
 • No bucket  
 • Blade off ground

Arm: 2100 mm **6'11"** Shoes: 450 mm **18"** roadliner Unit: kg lb

| B                      | A 1.5 m <b>4'11"</b>    |                         | 3.0 m <b>10'</b>    |                     | 4.5 m <b>14'9"</b>      |                     | ⊗ MAX                   |                     |
|------------------------|-------------------------|-------------------------|---------------------|---------------------|-------------------------|---------------------|-------------------------|---------------------|
|                        | Cf                      | Cs                      | Cf                  | Cs                  | Cf                      | Cs                  | Cf                      | Cs                  |
| 5 m<br><b>16' 5"</b>   |                         |                         |                     |                     |                         |                     | * 1520<br>* <b>3370</b> | 1340<br><b>2950</b> |
| 3 m<br><b>10'</b>      |                         |                         |                     |                     | * 1630<br>* <b>3600</b> | 1600<br><b>3540</b> | 1140<br><b>2530</b>     | 970<br><b>2140</b>  |
| 0 m<br><b>0'</b>       |                         |                         | 3040<br><b>6700</b> | 2400<br><b>5300</b> | 1680<br><b>3710</b>     | 1390<br><b>3070</b> | 1070<br><b>2370</b>     | 900<br><b>1990</b>  |
| -2.0 m<br><b>6' 7"</b> | * 4460<br>* <b>9840</b> | * 4460<br>* <b>9840</b> | 3030<br><b>6680</b> | 2400<br><b>5290</b> | 1650<br><b>3630</b>     | 1350<br><b>2990</b> | 1370<br><b>3020</b>     | 1140<br><b>2510</b> |

\*Load is limited by hydraulic capacity rather than tipping. Ratings are based on ISO standard No. 10567. Rated loads do not exceed 87% of hydraulic lift capacity or 75% of tipping load.


**LIFTING CAPACITY WITH LIFTING MODE**


A: Reach from swing center  
 B: Bucket hook height  
 C: Lifting capacity  
 Cf: Rating over front  
 Cs: Rating over side  
 ⊗: Rating at maximum reach

Conditions :  
 • 3405 mm **11' 2"** one-piece boom  
 • No bucket  
 • Blade off ground

Arm: 2100 mm **6'11"** Shoes: 450 mm **18"** triple grouser Unit: kg lb

| B                      | A 1.5 m <b>4'11"</b>    |                         | 3.0 m <b>10'</b>    |                     | 4.5 m <b>14'9"</b>      |                     | ⊗ MAX                   |                     |
|------------------------|-------------------------|-------------------------|---------------------|---------------------|-------------------------|---------------------|-------------------------|---------------------|
|                        | Cf                      | Cs                      | Cf                  | Cs                  | Cf                      | Cs                  | Cf                      | Cs                  |
| 5 m<br><b>16' 5"</b>   |                         |                         |                     |                     |                         |                     | * 1520<br>* <b>3370</b> | 1310<br><b>2900</b> |
| 3 m<br><b>10'</b>      |                         |                         |                     |                     | * 1630<br>* <b>3600</b> | 1580<br><b>3480</b> | 1130<br><b>2490</b>     | 950<br><b>2100</b>  |
| 0 m<br><b>0'</b>       |                         |                         | 2990<br><b>6590</b> | 2360<br><b>5200</b> | 1650<br><b>3650</b>     | 1360<br><b>3010</b> | 1060<br><b>2330</b>     | 880<br><b>1950</b>  |
| -2.0 m<br><b>6' 7"</b> | * 4460<br>* <b>9840</b> | * 4460<br>* <b>9840</b> | 2980<br><b>6570</b> | 2350<br><b>5180</b> | 1620<br><b>3570</b>     | 1330<br><b>2930</b> | 1350<br><b>2970</b>     | 1110<br><b>2460</b> |

\*Load is limited by hydraulic capacity rather than tipping. Ratings are based on ISO standard No. 10567. Rated loads do not exceed 87% of hydraulic lift capacity or 75% of tipping load.





## STANDARD EQUIPMENT

- 2320 mm **7'7"** blade
- Alternator, 35 Ampere, 24V
- AM/FM radio
- Automatic engine warm-up system
- Automatic air conditioner/heater
- Auxiliary input (3.5mm jack)
- Battery disconnect switch
- Converter, (2) x 12V
- Counterweight, 805 kg **1,775 lb**
- Dry type air cleaner, double element
- Electric horn
- EMMS monitoring system
- Engine, Komatsu SAA4D95LE-6
- Engine overheat prevention system
- Extended work equipment grease interval
- Fan guard structure
- Fuel system pre-cleaner 10 micron
- Hydraulic control unit, 1 actuator
- Hydraulic track adjusters
- KOMTRAX®
- Large LCD color monitor, high resolution
- Lock lever
- Mirrors, (LH and RH)
- Operator Protective Top Guard (OPG), Level 1
- Pattern change valve (ISO to BH control)
- PPC hydraulic control system
- Pump/engine room partition cover
- Radiator and oil cooler dustproof net
- Rear reflectors
- Rearview monitoring system (1 camera)
- Revolving frame undercovers
- ROPS cab
- Seat belt, retractable, 76mm **3"**
- Seat belt indicator
- Secondary engine shutoff switch
- Service valve
- Shoes, road liner, 450 mm **18"**
- Skylight
- Slip resistant foot plates
- Starter motor, 4.5kW
- Suction fan
- Thermal and fan guards
- Travel alarm
- Working lights, 2 cab/1 boom LH
- Working mode selection system



## OPTIONAL EQUIPMENT

- Arm, 2100 mm **6'11"** arm assembly
- Shoes, rubber shoe, 600 mm **24"**
- Shoes, triple grouser, 450 mm **18"**
- Sun visor
- Track roller guard
- Wide blade 2470 mm **8'1"**  
(requires 600 mm **24"** shoes)



## ATTACHMENT OPTIONS

- Hydraulic couplers

**For a complete list of available attachments, please contact your local Komatsu distributor.**



AESS859-02

©2015 Komatsu America Corp.

Printed in USA

AD06(3M)OTP

01/16 (EV-2)

# KOMATSU®

*Note: All comparisons and claims of improved performance made herein are made with respect to the prior Komatsu model unless otherwise specifically stated.*

[www.komatsuamerica.com](http://www.komatsuamerica.com)

Komatsu America Corp. is an authorized licensee of Komatsu Ltd. Materials and specifications are subject to change without notice.

**KOMATSU®**, Komatsu Care® and KOMTRAX® are registered trademarks of Komatsu Ltd.

All other trademarks and service marks used herein are the property of Komatsu Ltd., Komatsu America Corp. or their respective owners or licensees.