

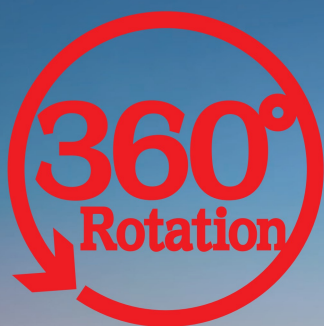
Pioneer of Rubber Crawler Carriers



MOROOKA

MST110CR

360°Rotation "KURU-KURU" Carrier Series



11t
Payload



- Auto Deceleration•Eco mode
- Anti Stall Function
- Hardox® In My Body certified dump bed
- Electric Control Joystick

CAT C7.1 Engine Tier 4 Final / EU Stage V

Greatly reduces emissions of PM (particulate matter) and NOx (nitrogen oxides),
Contributes to environmental protection.

MST110CR



Consideration for the Environment

Conforming to Tier4 Final/EU Stage V

It is equipped with the environmentally friendly EU Stage V compatible engine.

Auto Deceleration

When idling continues for a certain period of time, engine speed automatically lowers to improve fuel efficiency, noise and CO₂ emission are also reduced.

Contributing to Productivity improvement

Improvement of Driver-ability and Operability

18% faster running speed than conventional model
Newly adapted joystick reduces operator fatigue and provides intuitive operation feeling.

HST Speed Mode

Pursuing ease of use by setting 3 modes in low speed range in addition to high speed and low speed range

Improvement of durability in dump bed

Introduction of wear-resistant steel Hardox® greatly improves durability of dump bed and contributes reduction of running cost.

Pursuing Safety and Comfort

ROPS/FOPS Cabin

ROPS/FOPS certified cabin is equipped as standard feature.

Improvement of Visibility

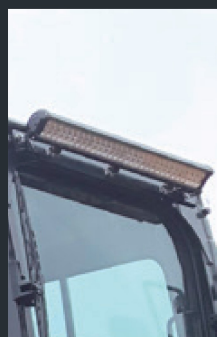
Visibility is improved by 70% against previous model.
Rear-view camera visualizes blind spots and improves safety.

Improvement in Steps located at center front

Durability of the steps accessing to inspection and maintenance points has been improved

Renewal of locking system in dump bed

Renewal of locking system in dump bed from bar type to pin type improves workability and safety.



LED Light



Operator Seat

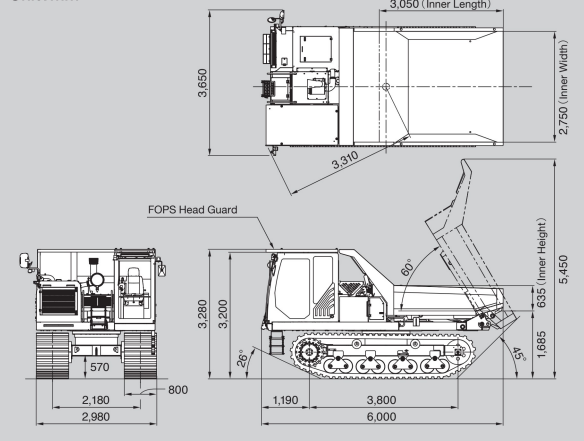
Specifications

	MODEL	MST110CR
PERFORMANCE	Maximum Payload	kg 11,000
	Loading Capacity (Struck/Heaped) m ³	4.36 / 6.17
	Speed (High/Low) km/h	11.8 / 7.6
	Ground Pressure (Empty/Laden) kPa	35.4 / 59.7
MACHINE DIMENSION & WEIGHT	Machine Weight	kg 16,000
	Overall Length	mm 6,000
	Overall Width (Transport)	mm 3,650 (2,980)
	Overall Height	mm 3,280
	Ground Clearance	mm 570
DUMP BED (INNER)	Crawler Width	mm 800
	Length×Width×Height	mm 3,050 × 2,750 × 635
ENGINE	Name	CAT C7.1
	Nominal Output kW(HP)/rpm	186 (252.9) / 2,200
TANK CAPACITY	Fuel Tank Capacity ℓ	300
	HST Tank Capacity ℓ	154
	DEF Tank Capacity ℓ	32
	Name and Type of The Vehicle	MST-2200VDR-VIA
	Name and Model of Prime Mover	YDS-C7.1B
	Emission Standard	Tier4 Final EU Stage V

● Specifications are subject to modify without notice

Dimensions

Unit: mm



MOROOKA
Morooka Co., Ltd.



URL: www.morooka.com (English) www.morooka.co.jp (Japanese)
Postal Code : 301-0031
358 Shoubeeshindenmachi, Ryugasaki city, Ibaraki Prefecture, Japan
TEL : +81-297-66-2111 TEL : (Overseas Sales Dept.) : +81-297-86-9034

CONTACT