

**PONSSE**



**AGILE AND EFFICIENT  
THINNING**

**PONSSE FOX**



# PONSSE FOX A HARVESTER FOR PRECISE THINNING AND SOFT GROUNDS

PONSSE Fox Harvester is a fuel-efficient and effective combination of state-of-the-art technology and reliable basic solutions. The driving forces of the Fox are the accurate and powerful crane, good visibility, machine stability and low surface pressure for demanding conditions and soft grounds.

The eight-wheeled PONSSE Fox is tailor-made for thinning and soft grounds. The crane is powerful and easy to use, and is positioned close to the cabin to ensure excellent visibility of the working area.

The high-performance engine and high pulling power, along with the robust hydraulic frame lock make the Fox a stable machine capable of extremely high propulsion. The most distinctive strength of the Fox is the strong, reliable and easy-to-use PONSSE C44+ parallel crane, which is located in the centre of the machine. The crane's high efficiency enables excellent fuel economy and high productivity.



#### **PONSSE FOX**

is a stable and easy-to-use machine providing excellent performance, especially for thinning and on soft grounds.



# PONSSE FOX – UNBEATABLE AGILITY AND STRENGTH



## CRANE

A PONSSE C44+ parallel crane, with parallel action, uses hydraulics instead of mechanical leverage. This makes the crane more fuel-efficient, powerful and lower-maintenance. All the crane models used by Ponsse are designed and manufactured by the company itself, for a combination of crane and base machine that is of guaranteed quality and functionality.



## ENGINE AND HYDRAULICS

Fox's unrivalled power comes from its high torque engine, the large 210cc work pump, and high-efficiency hydraulics. Together these offer smooth-running power with low fuel consumption.



## FRAME STRUCTURES AND FRAME LOCK

The Fox's frame is designed with special attention to durability and ease of service. The reliable frame lock that is equipped with hydraulic cylinders is solidly made and acts as a shock absorber when driving.



## EIGHT WHEELS

With eight wheels, the Fox is well adapted to all kinds of sites and ground. The low surface pressure enables efficient working on soft and vulnerable terrain, while the machine's stability gives high confidence on uneven soil and steep slopes. The 26.5" tyre size of the Fox, combined with the narrow frame design, provides excellent propulsion and ground clearance even in difficult terrain.



## CABIN AND CONTROL SYSTEM

The most spacious and comfortable cabin and the most ergonomic controls in the market guarantee the best working comfort. The PONSSE Opti information system is an advanced and easy-to-use tool for controlling the machine and work.



## HARVESTER HEADS

Ponsse harvester heads are known for their high efficiency/weight ratios and robust structure, which are second to none. The Fox comes with the best harvester head selection on the market: the small and spunky H5 is well-suited for work focused on thinning, whereas the light and efficient H6 shows its true quality on more sizable logging sites.



# LESS SERVICE, MORE OPERATION

The technology and hydraulics offer longer service intervals, increasing effective operating hours and reducing operating costs.

In addition, easy access to important components speeds up maintenance. Important developments in the new product series include the positioning of

components and service points, as well as the ease of maintenance, as requested by our customers.



## SERVICE LIGHTS

Service lights are located in the bumper casings and under the cabin and engine cover.



## EASY ACCESSIBILITY

Batteries, Webasto heating systems, the central lubrication unit, electrical centre, pneumatic connectors and measuring points are easily accessible under opening bumper casings.



## STORAGE SPACE FOR ACCESSORIES

The machine provides plenty of storage space for tools and accessories in various locations.



## CLARITY FOR MAINTENANCE

Machine designs have been clarified and machine models standardised. In addition, an owner's manual and a service book are always delivered with the machine.



## INSPECTION POINTS

Daily checks are easy to perform without climbing or stretching.

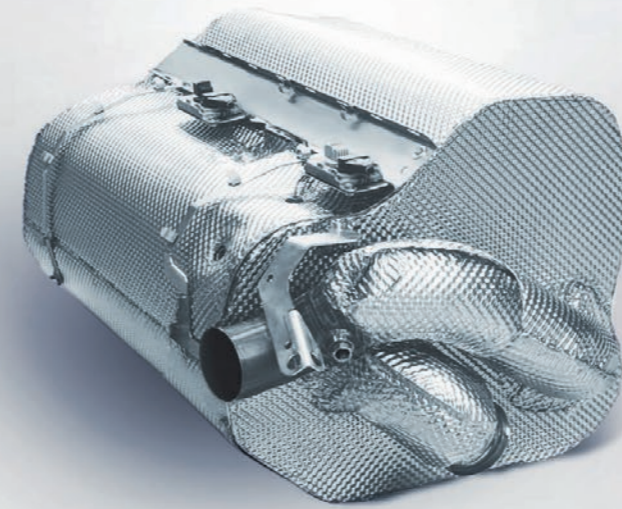
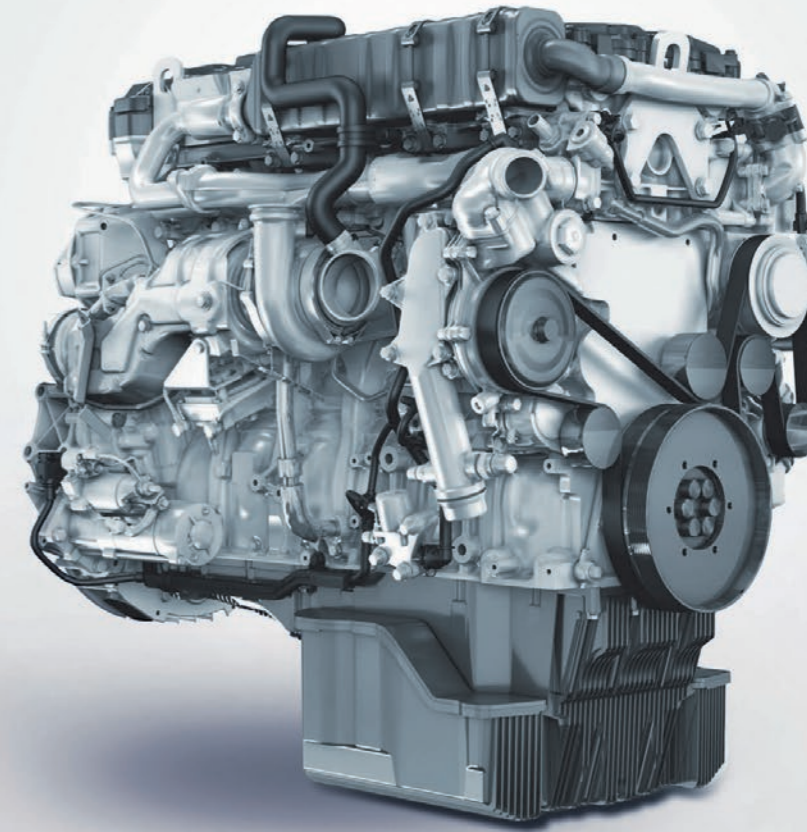


## SERVICE PLATFORMS AND STEPS

The anti-slip service platforms and attachments of the new service steps enable easier and safer maintenance procedures.

# CLEAN PERFORMANCE WITH NEW ENGINES

Ponsse uses the latest Mercedes-Benz/MTU engine technology to provide the highest performance and fuel economy with excellent reliability. They provide high torque at lower rpm level, as well as significantly lower emission levels. In Europe Stage V-engines are used where particle mass (PM) and amount of nitrous oxides are significantly lowered. Along with particle mass, in the new STAGE V level engines also number of particles is reduced by a diesel particulate filter (DPF).



*In North America PONSSE machines use the powerful and responsive Tier 4 level Mercedes Benz/MTU engines. In other countries, a Stage III level engines are used.*

# THE MOST COMFORTABLE OFFICE IN THE FIELD

PONSSE forest machine cabins are ideal work environments for professionals who appreciate comfort, safety and ergonomics. The ergonomics of PONSSE forest machines are first-class. Thanks to the large cabin, wide window surfaces and thin window columns, there is excellent visibility in all directions. PONSSE Seat has been designed for forest machines from the start, and Ponsse has exclusive rights to it from the seat manufacturer. The PONSSE Seat has better adjustments, firmer padding, more comfortable upholstery and sturdier base than other seat models. PONSSE Seat is available for all new PONSSE forest machines. The end result is the driver being comfortable and productive throughout the entire work shift.

# PONSSE MANAGER - THE NEXT LEVEL IN DIGITALIZED FORESTRY MACHINES

PONSSE Manager allows you to easily monitor and control your company's daily operations. This comprehensive and user-friendly tool helps in maintaining your harvester fleet, and makes work planning and reporting more efficient. PONSSE Manager provides real-time, comprehensive data on your fleet, for both performance and sites. PONSSE Manager works on all devices - smartphones, tablets, laptops and desktop computers.





# PONSSE FOX

## DIMENSIONS

Length:	8 175 mm (322 in)
Width	2 640 - 2 930 mm (104-115 in)
Transportation height:	3 660 mm (144 in)
Minimum weight:	19 200 kg (42,329 lbs)
Typical weight:	20 200 kg (44,533 lbs)
Ground clearance:	655 mm (25.8 in)

## ENGINE

Model:	Mercedes-Benz/MTU OM 934 LA Stage V/Tier 4 Final or Mercedes-Benz/MTU OM 924 LA EU Stage IIIA (according to legal requirements)
Power:	Stage V and Tier 4F: 150 kW (204 hp) Stage IIIA: 145 kW (197 hp)
Torque:	1 200–1 600 rpm (Stage V: 850 Nm, Tier 4F: 800 Nm, Stage IIIA: 705 Nm)
Tractive force:	175 kN (39,341 lbf)
Fuel tank:	300 l (79.2 gal US)

## TYRES

Front and rear:	600/55-26,5" / 710/45-26,5"
-----------------	-----------------------------

## HYDRAULICS

Control system:	PONSSE OptiControl
Working pump:	210 cm <sup>3</sup> (12.8 cu in)
Hydraulic oil tank volume:	170 l (45 gal US)

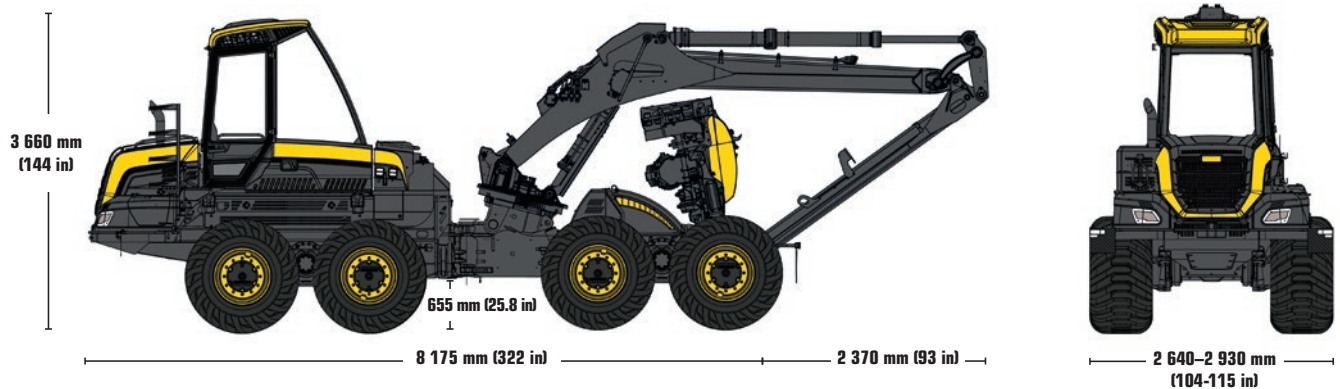
## CRANE

Model:	PONSSE C44+
Reach:	10/11 m (33/36 ft)
Lifting torque:	230 kNm
Slewing torque:	52 kNm
Turning angle:	250°
Base tilt angle:	±15°

## HARVESTER HEAD

Model:	PONSSE H5 PONSSE H6
--------	------------------------

Plenty of optional equipment is available in addition to the comprehensive PONSSE Fox standard equipment. Consult your nearest Ponsse sales department or dealer for more information on the standard and optional equipment.



The manufacturer reserves the right to make technical changes and improvements. PONSSE Fox 8/18 ©... ENG Copyright © 2018 Ponsse Plc. PONSSE is a registered trademark of Ponsse Plc and other product names are trademarks of Ponsse Plc.



**Ponsse Plc**  
Ponssentie 22  
FI-74200 Vieremä  
FINLAND  
Tel. +358 20 768 800  
Fax +358 20 768 8690  
www.ponsse.com

**Ponsse North America, Inc.**  
4400 International Lane  
Rhineland, WI 54501  
USA  
Tel. 715 369 4833  
Fax 715 369 4838

**Ponsse UK Ltd.**  
4 Annan Business Park  
Annan  
Dumfriesshire  
DG12 6TZ  
UNITED KINGDOM  
Tel. +44 1461 207 510  
Fax +44 1461 207 511

**A logger's best friend**

[www.ponsse.com](http://www.ponsse.com)