

# ATTACHMENT GUIDE



## ***QUADCO***

FROM SMALL TO LARGE APPLICATIONS, WE  
ARE YOUR ULTIMATE SOURCE FOR FORESTRY  
CUTTING TOOLS & ATTACHMENTS

# Table of Contents

## FELLING HEADS

### Track Mount options

C-Series vs. B-Series.....3-4

C-Series.....5-6

B-Series.....7-8

Intermittent & Bar Saw.....9-10

### Drive-To-Tree options

CP .....5-6

### Track & Drive-To-Tree options

7224 High Capacity Saw Head.....11-12

7320 High Capacity Shear Head.....13-14

Bunching Shear.....15-16

## TILT, SAW DISCS & TEETH

Tilt, Saw Discs & Teeth.....17-18

## HARVESTERS

5660.....19-20

## FORESTRY DRUM MOWERS

45” Direct Drive & 56” Belt Driven.....21-22

## DELIMBERS

Monoboomb & Telescopic.....23-24

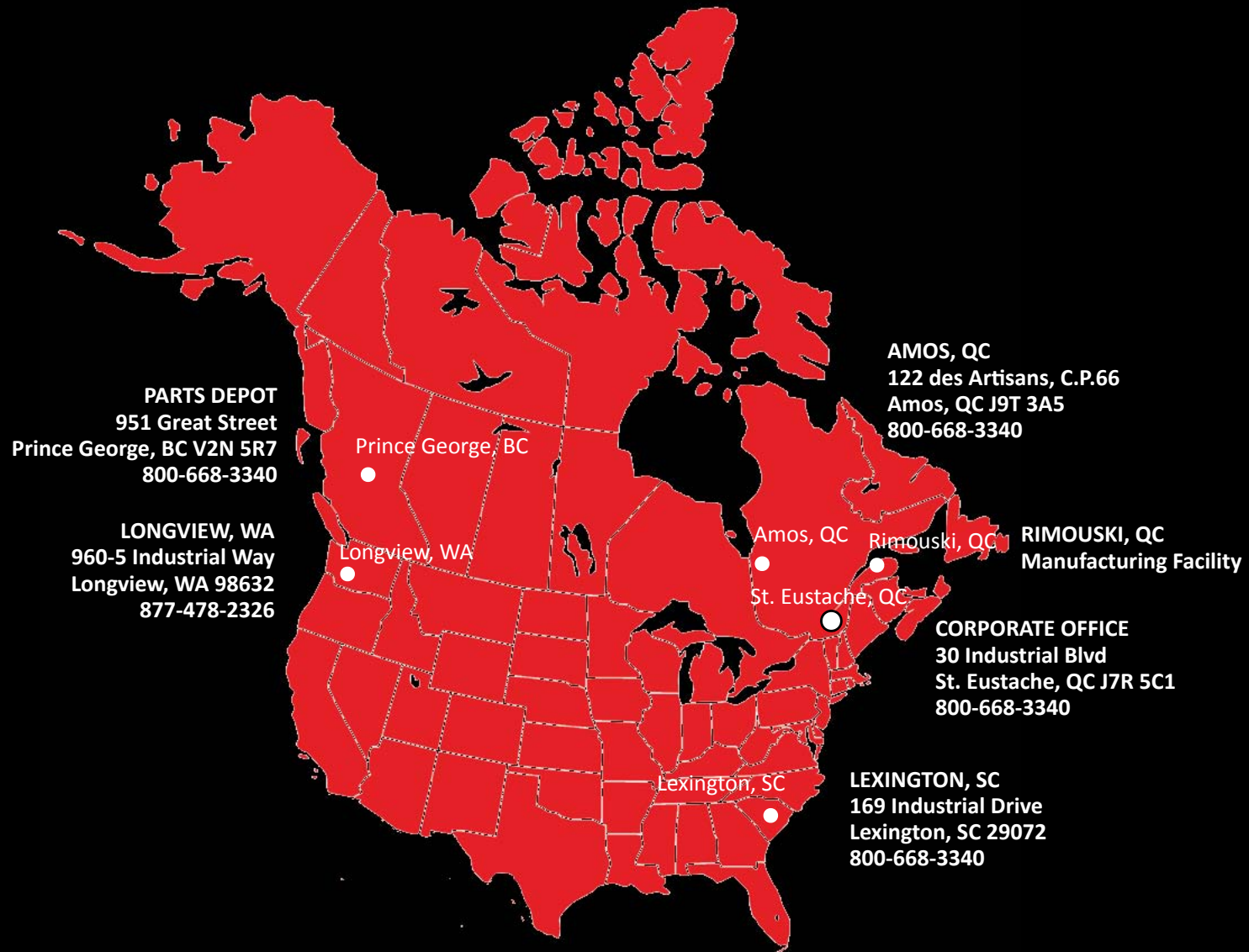
Computer.....25

Saw Teeth.....26

## OUR MISSION

*To manufacture world class cutting systems to fill our customers’ needs, provide satisfying careers for all our employees, and to earn a fair return in order to allow continuous improvement, thereby creating a partnership with our customers for a successful future.*

# DISTRIBUTION AND MANUFACTURING FACILITIES



## QUADCO

www.quadco.com • 800.668.3340

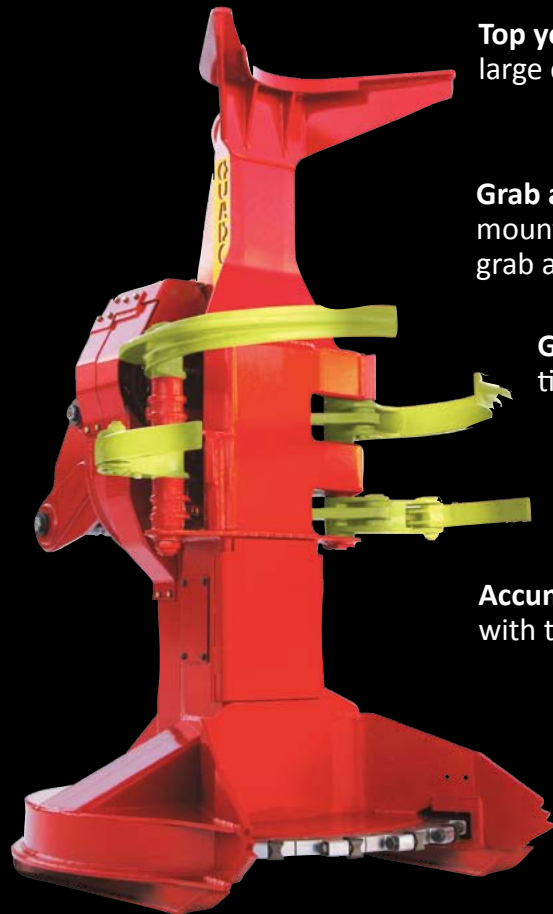
# C-SERIES VS. B-SERIES

Choose the high-speed saw head that best fits your needs

## C-SERIES

*The Arms-Up Design*

*Best for ease of accumulating small wood  
and faster cycle times*



**Top yoke** Contoured to hold large quantities of small trees

**Grab and accumulator arms** mounted high on head for grab and go capability

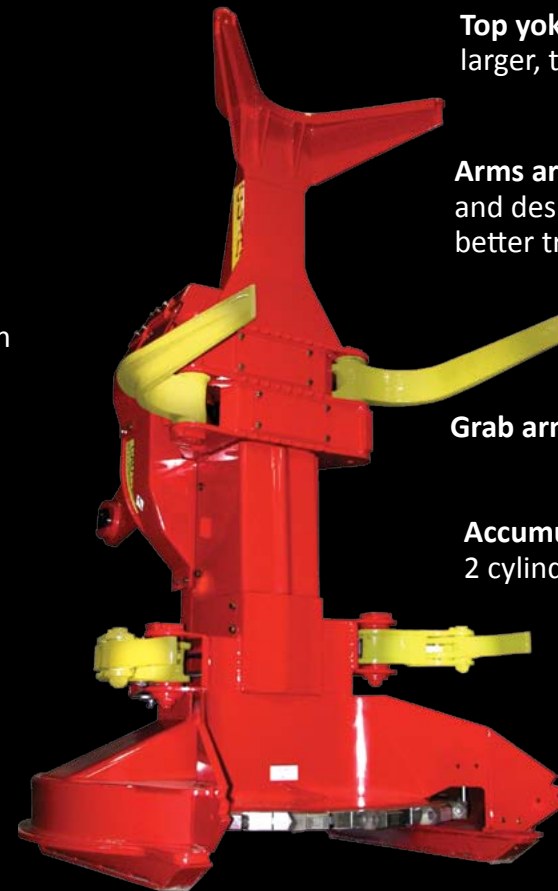
**Grab arms** 1 cylinder with timing link

**Accumulator arms** 1 cylinder with timing link

## B-SERIES

*The Arms-Down Design*

*Best for big wood and maximum  
holding power*



**Top yoke** formed to handle larger, taller trees

**Arms are separated** and designed for better tree control

**Grab arms** with 2 cylinders

**Accumulator arms** with 2 cylinders

# QUADCO

www.quadco.com • 800.668.3340

# C-SERIES VS. B-SERIES

## C-SERIES

*The Arms-Up Design*

### Available Sizes

- **18C** - 18" (457mm) cut  
3.0ft<sup>2</sup> (.28m<sup>2</sup>) accumulation area
  - **20SC** - 20" (508mm) cut  
4.3ft<sup>2</sup> (.40m<sup>2</sup>) accumulation area
  - **22SC** - 22" (559mm) cut  
5.5ft<sup>2</sup> (.51m<sup>2</sup>) accumulation area
  - **22C** - 22" (559mm) cut  
4.8ft<sup>2</sup> (.45m<sup>2</sup>) accumulation area
  - **24C** - 24" (610mm) cut  
5.8ft<sup>2</sup> (.54m<sup>2</sup>) accumulation area
- 
- 

## B-SERIES

*The Arms-Down Design*

### Available Sizes

- 
- **20B** - 20" (508mm) cut  
4.0ft<sup>2</sup> (.37m<sup>2</sup>) accumulation area
- 
- **22B** - 22" (559mm) cut  
4.8ft<sup>2</sup> (.45m<sup>2</sup>) accumulation area
  - **24B** - 24" (610mm) cut  
5.8ft<sup>2</sup> (.54m<sup>2</sup>) accumulation area
  - **26B** - 26" (660mm) cut  
6.1ft<sup>2</sup> (.57m<sup>2</sup>) accumulation area
  - **28B** - 28" (711mm) cut  
6.4ft<sup>2</sup> (.59m<sup>2</sup>) accumulation area

### Additional features of both the C-Series & B-Series high-speed saw heads:

- **Sizes range** from 18"-28" (457mm-711mm) & weight 4800lbs - 9000lbs+ (2177kg-4082kg) - An average of 2000lbs (907kg) less than competitors on large models
- **Improved air-flow** and chip discharge through an exhaust chute in base
- **Control heavy underbrush** with dual chip discharge option
- **Maximum performance** for all carriers with professionally designed boom adapters

# QUADCO

www.quadco.com • 800.668.3340



# C-Series

## Features

**Better leverage** when handling tall timber with extended tower

**Faster accumulation** - 1 cylinder per set of arms with a heavy duty timing bar

**Stronger, more durable** cast arms contoured for maximum support when accumulating

2 cylinders per head,  
3.5" (89mm) or  
4" (102mm)

**Ultra-reliable** disc drive, easily adjustable bearings

**Quad Tooth®** style options in Beaver, Concave, or Carbide

**QUADCO** disc options one-piece or segmented discs



**C-SERIES** - FOR EASE OF ACCUMULATION  
WITH A "FOUR ARMS-UP" DESIGN

**CP-SERIES** - DESIGNED FOR RUBBER TIRE APPLICATIONS

## Specifications\*

MODEL	18C**	20SC**	22SC**	22C	22CP/24CP	24C
Cutting Capacity	18" (457mm)	20" (508mm)	22" (559mm)	22" (559mm)	22"/24" (559mm/610mm)	24" (610mm)
<b>OPTIONAL ROTATION OPERATING WEIGHT</b> (Includes std saw disc, boom adapter, and pins)						
Stationary	N/A	N/A	N/A	N/A	6,300lbs (2 858kg)/ 6,450lbs (2 926kg)	N/A
40-deg (Med. Torque)	4,720lbs (2,141kg)	N/A	N/A	N/A	N/A	N/A
40-deg (High Torque)	N/A	N/A	6,190lbs (2 808kg)	6,485lbs (2,942kg)	N/A	6,710lbs (3,044kg)
360-deg (Med. Torque)	5,175lbs (2,263kg)	5,520lbs (2 540kg)	N/A	N/A	N/A	N/A
360-deg (High Torque)	N/A	N/A	6,820lbs (3 019kg)	7,065lbs (3,152kg)	N/A	7,660lbs (3,255kg)
360-deg VI	N/A	N/A	N/A	7,160lbs (3,248kg)	N/A	7,850lbs (3,350kg)
<b>DIMENSIONS</b>						
Height	99" (2,515mm)	101" (2,565mm)	116" (2,946mm)	117" (2,972mm)	117" (2,972mm)	117" (2,972mm)
Width	55" (1,397mm)	56.5" (1,435mm)	61.5" (1,562mm)	64" (1,626mm)	70" (1,778mm)	70" (1,778mm)
Depth	51" (1,295mm)	53" (1,346mm)	63.25" (1,607mm)	67" (1,702mm)	73" (1,854mm)	71" (1,803mm)
Max. Throat opening	31" (787mm)	37" (940mm)	46.5" (1,181mm)	51" (1,295mm)	52" (1,321mm)	52" (1,321mm)
Throat opening at teeth	29" (737mm)	35" (889mm)	42" (1,067mm)	41" (1,041mm)	42" (1,067mm)/ 43" (1,092mm)	43" (1,092mm)
Accumulation area	3.0 sq.ft. (.28m <sup>2</sup> )	4.3 sq.ft. (.40m <sup>2</sup> )	5.5 sq.ft (.51m <sup>2</sup> )	4.8 sq.ft. (.45m <sup>2</sup> )	5.1 sq.ft. (.47m <sup>2</sup> )/ 5.8 sq.ft. (.54m <sup>2</sup> )	5.8 sq.ft. (.54m <sup>2</sup> )
<b>DISC DATA</b> (Can vary depending on the type of disc and choice of teeth)						
Tip-to-tip diameter	48" (1,219mm)	52" (1,321mm)	55" (1,397mm)	57" (1,448mm)	58" (1,473mm)/ 61" (1,549mm)	61" (1,549mm)
Rated saw speed	1,350rpm	1,250rpm	1,200rpm	1,150rpm	1,100rpm / 1,075rpm	1,075rpm
Number of teeth	18	18	22	16	16 /18	18
Saw kerf	2"(51mm)	2"(51mm)	2"(51mm)	2 5/16"(59mm)	2 5/16" (59mm)	2 5/16" (59mm)
Weight - holders & teeth (varies depending on disc)	500-530lbs (227-240kg)	575lbs (261kg)	700lbs (318kg)	840lbs (381kg)	840lbs (381kg)/ 956lbs (434kg)	956lbs (434kg)
Style(One-piece & Segmented) Both		Both	Both	Both	Both	Both

\*Specifications are subject to change without notice. Weights & measurements are approximate. \*\*Head specially designed for small timber where high accumulation capacity and fast cycles are required.  
Please consult Quadco for excavator mounting options.

# B-Series



**B-SERIES** - FOR ALL YOUR BIG WOOD:  
FEATURES 'ARMS DOWN' DESIGN FOR  
MAXIMUM HOLDING POWER.

## Features

**Better leverage** of big and tall timber with extended tower and "Arms down" design

**Durable cast grab & accumulator arms**, each operated independently, 1 cushioned cylinder per arm

4 cylinders per head, 3" (76mm) or 3.5" (89mm)

**Ultra-reliable disc drive**, easily adjustable bearings

**Quad Tooth®** style options in Beaver, Concave, or Carbide



**QUADCO disc** options one-piece or segmented discs



## Specifications\*

<b>MODEL</b>	<b>20B</b>	<b>22B</b>	<b>24B</b>	<b>26B</b>	<b>28B</b>
<b>Cutting Capacity</b>	20" (508mm)	22" (559mm)	24" (610mm)	26" (660mm)	28" (711mm)
<b>OPTIONAL ROTATION OPERATING WEIGHT</b> (Includes std saw disc, boom adapter, and pins)					
Optional 40-deg	5,950lbs (2,699kg)	6,650lbs (3,016kg)	6,900lbs (3,130kg)	N/A	N/A
Optional 360-deg (Standard)	6,450lbs (2,926kg)	7,125lbs (3,243kg)	7,530lbs (3,266kg)	N/A	N/A
Optional 360-deg VI	N/A	7,350lbs (3,338kg)	7,660lbs (3,452kg)	8,185lbs (3,588kg)	N/A
Optional 360-deg VI <sup>2</sup>	N/A	N/A	N/A	N/A	9,400lbs (4,173kg)
<b>DIMENSIONS</b>					
Height	116" (2,946mm)	117" (2,972mm)	117" (2,972mm)	117" (2,972mm)	128" (3,251mm)
Width	58" (1,473mm)	64.5" (1,638mm)	70" (1,778mm)	73" (1,854mm)	79" (2,007mm)
Depth	62" (1,575mm)	67.12" (1,705mm)	71" (1,803mm)	72" (1,829mm)	80" (2,032mm)
Max throat opening	37" (940mm)	50.5" (1,283mm)	52" (1,321mm)	57.7" (1,466mm)	59" (1,499mm)
Throat opening at the teeth	37" (940mm)	41" (1,041mm)	43" (1,092mm)	44" (1,118mm)	46" (1,168mm)
Accumulation area	4.0 sq.ft. (.37m <sup>2</sup> )	4.8 sq.ft. (.45m <sup>2</sup> )	5.8 sq.ft. (.54m <sup>2</sup> )	6.1 sq.ft. (.57m <sup>2</sup> )	6.4sq.ft. (.59m <sup>2</sup> )
<b>DISC DATA</b> (Can vary depending on the type of disc and choice of teeth)					
Tip-to-tip diameter	52" (1,321mm)	57" (1,448mm)	61" (1,549mm)	65" (1,651mm)	68" (1,727mm)
Rated saw speed	1,250rpm	1,150rpm	1,075rpm	1,000rpm	960rpm
Number of teeth	20	16	18	18	20
Saw kerf	2" (51mm)	2 5/16" (59mm)	2 5/16" (59mm)	2 5/16" (59mm)	2 5/16" (59mm)
Weight - holders & teeth	604lbs (274kg)	840lbs (381kg)	956lbs (434kg)	1056lbs (479kg)	1150lbs (522kg)
Style (One-piece and segmented)	Both	Both	Both	Both	Both

\*Specifications are subject to change without notice. Weights & measurements are approximate.

# QUADCO

www.quadco.com • 800.668.3340

# Intermittent & Bar Saw



**INTERMITTENT** - FOR LARGE WOOD SOLUTIONS. OFFERS SELECTIVE CUT VERSATILITY & A SWING OUT DISC FOR HIGH-QUALITY CUTS AT AN IMPRESSIVE RATE.

**BAR SAW** - CAPABLE OF HANDLING LARGE TREES & CUTTING UP TO 32" (813mm) IN A SINGLE CUT.

## Features



**Intermittent Saw**

**Capable of** shoveling wood, cutting individual large limbs, and topping large trees

**Optional Locking** arms safety feature available for projects involving electrical wires

**2900 cuts** up to 29" (737mm) tree & the 2400 cuts up to 24" (610mm) tree

**Comes with** patented **QUADCO** segmented disc

**Ideal for** blow-down and right of way clearing

**Hold and** Cut tree control

**12 tooth** swing out sawblade

**Stop & go** versatility - by stopping & retracting the bar saw after the cut, the head can safely be positioned for delimbing, topping, butt trimming & as a grapple for tree handling and piling

**Grab & accumulator** arms - made of cast steel for maximum durability, One cylinder per arm. Size 3.5" (89mm)

**Low maintenance** & energy savings - requiring less HP from the carrier to run the saw, the fuel consumption is lower than a regular high speed saw disc



**Bar Saw**

# Intermittent & Bar Saw

## Specifications\*

<b>MODEL</b>	<b>2400 Int.</b>	<b>2900 Int.</b>	<b>3200 Bar Saw</b>
<b>Cutting Capacity</b>	24" (610mm)	29" (737mm)	32" (813mm)
<b>OPERATING WEIGHT</b> (Includes std saw disc, boom adapter, and pins)			
Drive-To-Tree (DTT)	N/A	6,500lbs (2,948kg)	N/A
Optional 40-deg (Med Torque)	6,200lbs (2,812kg)	6,550lbs (2,971kg)	4,775lbs (2,166kg)
Optional 360-deg (Standard)	6,600lbs (2,994kg)	6,970lbs (3,152kg)	5,400lbs (2,450kg)
Optional 360-deg VI	6,825lbs (3,096kg)	7,475lbs (3,391kg)	N/A
<b>DIMENSIONS</b>			
Height	118" (2,997mm)	120" (3048mm)	106" (2,692mm)
Width	53" (1,346mm)	53" (1346mm)	56" (1,422mm)
Depth	60" (1,524mm)	65" (1651mm)	56" (1,422mm)
<b>DISC DATA</b> (Can vary depending on the type of disc and choice of teeth)			
Motors	Two F12-30	Two F12-30	N/A
Pinion	Dual (2) Pinions	Dual (2) Pinions	N/A
Rated saw speed	117ft/sec	120ft/sec	N/A
(@90 gpm /3800 psi)	760rpm	700rpm	N/A
Number of teeth	12	12	N/A
Saw kerf	1 5/8" (41mm)		1 3/4" (44mm) N/A
Style	Segmented	Segmented	N/A
<b>BAR SAW</b>			
Type	N/A	N/A	11H
Length	N/A	N/A	39.5" (1,003mm)
Chain	N/A	N/A	3/4" (19mm) pitch
Motor	N/A	N/A	F12-40
Hydraulic flow	N/A	N/A	62gpm (238L/min)
<b>CARRIER RECOMMENDATION</b>			
Carrier	22 ton class & plus	25 ton class & plus	25 ton minimum
PSI working pressure	3,600-4,000psi (248-276bar)	3,600-4,000psi (248-276bar)	
Valve section saw circuit	75gpm (284L/min)	75gpm(284L/min)	
Low flow valves for arms and rotator	yes	yes	

\*Specifications are subject to change without notice.  
Weights & measurements are approximate.  
Contact Quadco for excavator mounting options.

# QUADCO

www.quadco.com • 800.668.3340



# 7224 High Capacity Saw Head

## Features

**Completely NEW head**  
(design and features)

**Versatile** - allows 24"  
cuts

**Full visibility of arms** for  
easier operation

NEW Patent Pending  
Multi-Junction  
Accumulating Arm  
Design

**One piece or segmented**  
disc options available

**Compact design**  
improves operating  
agility

**Designed** for both  
rubber tire and boom  
mount

Long and wide chip  
exit chute with bolt  
on design for easy  
maintenance



*OPERATORS VIEW  
FROM THE CAB*

**STEEL TOOTH OPTION FOR  
GENERAL USE AND ROCKY  
SITE CONDITIONS.**

**CARBIDE TOOTH OPTION  
FOR HIGHLY ABRASIVE, NON-  
ROCKY SOILS.**





# Specifications\*

## 7224 High Capacity Saw Head

### MODEL

#### Cutting Capacity

#### OPERATING WEIGHT (Includes boom adapter, and pins)

Drive-To-Tree (D)

Boom Mount Model

Optional Valve and Guards

### DIMENSIONS

Height

Width

Depth

Drive to Tree Model

Boom Mount Model

Opening

Opening at Teeth

Accumulation area

Arm cylinder diameter

### HYDRAULICS

Hydraulic flow

Arm Cylinders

Disc Saw Motor

Rotor 360 degree

Hydraulic pressure recommended

Disc Saw Motor

Cylinders

Rotor 360 degree

### Disc Data

Tip to tip diameter

Rated Saw Speed

Number of teeth

Saw kerf

weight holders and teeth

Style (one-piece and segmented)

### 7224

24" (610mm)

7,590lbs (3,446 kg)

8,405lbs (3,815 kg)

330lbs (150kg)

107" (2,708mm)

72" (1,824mm)

73" (1,854 mm)

87" (2,210mm)

45.5

40"

7.2 sq. ft. (0.67 m<sup>2</sup>)

3.5"

25-42 gpm (95-159 l/min)

30-35 gpm (114-132 l/min)

25-42 gpm (95-159 l/min)

15-20 gpm (57-76 l/min)

3,650-4,500 psi (250-310 bar)

3,650-4,000 psi (250-275 bar)

3,000 psi (205 bar)

61" (1549mm)

1,075 RPM

18

25/16" (59mm)

956 lbs

Both

\*Specifications are subject to change without notice. Weights & measurements are approximate.

# QUADCO

www.quadco.com • 800.668.3340

# 7320 High Capacity Shear Head

## Features

**Completely NEW head**  
(design and features)

**Versatile** - allows 20" soft wood cuts to 16" hard wood cuts

**Full visibility of arms** for easier operation

**Patent pending multi-Junction** accumulation arm

**Boom mount** with 360 deg. rotator or front end mount for wheeled carriers

**Customized to loggers needs** - Optional knife thickness available and tilt option (fixed and 360 degree)

**Please consult Quadco** for the optional head mounted control valve system for excavators.

Tilt Option: Stationary front wheeled and 260 deg for boom carriers

**Compact design** improves operating agility



**MULTI-FUNCTION  
ACCUMULATOR** WILL  
COME OUT OF A FULL  
BUNDLE ALLOWING FOR  
MORE TREE COLLECTION

**BUNDLE LOAD** IS NEAR THE  
CENTER OF BOOM OR FRONT  
MOUNT TO GREATLY REDUCE  
TWISTING STRESS



# 7320 High Capacity Shear Head

## Specifications\*

### MODEL

Cutting Capacity

OPERATING WEIGHT (Includes boom adapter, and pins)

Drive-To-Tree (D)

Boom Mount Model

Optional Valve

### DIMENSIONS

Height

Width

closed, main frame

open, outside guard

Drive to Tree Model

Boom Mount Model

Opening

Opening at Knife Tip

Accumulation area

Shear knife thickness

Arms cylinder diameter

### HYDRAULICS

Hydraulic flow

Arm Cylinders

Disc Saw Motor

Rotor 360 degree

Hydraulic pressure recommended

Cylinders

Rotor 360 degree

Shear and Arms

### 7320

20" (508mm)

7,270 lbs (3,300kg)

8,009 lbs (3,636kg)

500lbs (227kg)

98" (2,490mm)

51.5" (1,308mm)

59" (1,499mm)

71" (1,803mm)

7.3 sq.ft. (.68m<sup>2</sup>)

1" (25mm)

3" (76mm)

80 gpm (303 L/min)

80 gpm (303 L/min)

80gpm (303L/min)

15-20gpm/ (57-76L/min)

3,650 PSI (252bar)

3,000 PSI (207 bar)

3,650 PSI (252 bar)

\*Specifications are subject to change without notice. Weights & measurements are approximate.

# QUADCO

www.quadco.com • 800.668.3340

# 212 Shear



**212 SHEAR** – PROFESSIONAL DUTY SMALL  
SHEAR HEAD FOR 10–15T EXCAVATORS.  
FAST AND CLEAN SHEAR CUT.  
TESTED AND PROVEN WITH TALL TREES.

## Features

Accumulating arm

Rotation by two hydraulic  
motors

Compact design improves  
operating agility

NEW felling head -  
(Design and features)

Visible arms for easier  
operation

Recommendation (tree  
diameter at stump):

- Optimum range 4"-8"  
(100-200 mm)
- Max in Hardwood 10"  
(254 mm)
- Max in Softwood 11"  
(280 mm)





## Specifications\*

### MODEL

Cutting Capacity

Operating Weight (Includes boom adapter, rotation mechanism, and pins)

### DIMENSIONS

Height

Width

Depth

Accumulation area

Shear knives thickness

Shear / Sweep Arm closing time (subject to correct oil flow supply)

### HYDRAULICS

Sweep/shear arm cylinder diameter

Cylinder force

Oil flow recommendation

Max operating pressure

Accumulator arm cylinder diameter

Max operating pressure in bars

Max oil flow recommendation

Side tilt/ rotator by 2 Hydraulic motors

Max rotate angle

Max motor pressure

Oil flow max

CARRIER SIZE RECOMMENDATION

### 212

12" (305 mm)

2,596 lbs (1,180 kg)

58" (1,465 mm)

52" (1,320 mm)

54" (1,370 mm)

1.7 sq.ft. (.158m<sup>2</sup>)

3/4" (19 mm)

2 Seconds (2s)

4.5" (114.6 mm)

56,200 lbf (250 kN)

34 gpm (132 L/min)

4,000 psi (275 bars)

2" (51 mm)

3,600 psi (248 bars)

7.9 gpm (30 L/min)

+ / - 130°

3,640 psi (250 bars)

7.9 gpm (30 L/min)

12–15t excavator

# QUADCO

www.quadco.com • 800.668.3340

# Lateral Tilt Options



**40-deg:** 4.5"(114mm)  
cushioned cylinder



**360-deg:** 2 motors with  
single pinion



**40-deg:** tilt for 18C



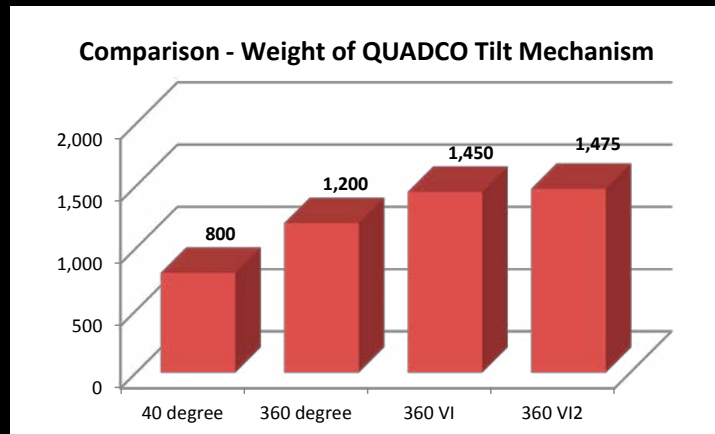
**360-deg VI:** 2 motors with  
independent pinions



**360-deg VI<sup>2</sup>:** 2 motors with indepen-  
dent pinions, designed for extreme  
weight handling

---

**Leading the Industry with 360° Rotates**  
Increase productivity & versatility at your logging operation



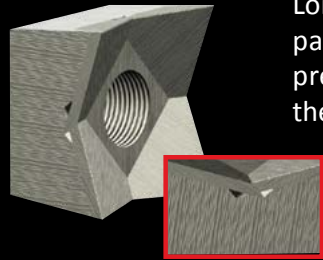
## QUADCO

www.quadco.com • 800.668.3340

# Quad Tooth® System

Equip your attachment with the right cutting tools to get the job done. Right.

## 1. CHOOSE YOUR MATERIAL: CARBIDE TIP OR STEEL

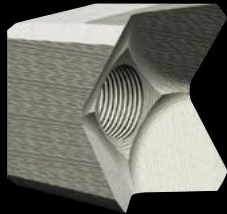


Longer lasting Carbide teeth have patented overlapping design to prevent blow-by and erosion of the tooth and the disc.

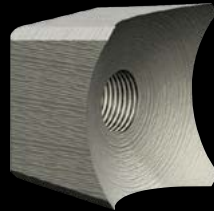
Patented  
overlap tips

## 2. CHOOSE YOUR STYLE: BEAVER or CONCAVE

BEAVER style

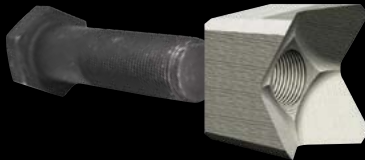


CONCAVE style



## SAVE EVEN MORE *and* LOWER WASTE

By replacing the shank arrangement with a large bolt, the result is a simpler tooth with little waste of material and more savings.



## 3. FOR SAW HEAD SYSTEMS, CHOOSE THE PROPER DISC

### **NEW** - Deep Gullet Disc



(Patent pending) Designed with larger chip pocket to reduce resistance and wear on the disc

### Standard Disc



Optimum tooth holder angle promotes maximum disc and tooth life

### Segmented Disc



### REVERSIBLE TOOTH HOLDER FOR SEGMENTED DISC

- Fully symmetrical so the tooth can be mounted on either side allowing the holder to be reversed
- Will double the life of the holder
- Will lower overall operating cost



DISC HOLDER ASSEMBLY - Shown with 2-piece tooth

# QUADCO

www.quadco.com • 800.668.3340

# 5660



**5660** - A SOLID COMPETITOR IN HARD WOOD STANDS WITH ITS 4 DELIMBING ARMS AND RUGGED STRUCTURE.

## Features

**Top Saw** - standard .404"

**NEW bushing** design in floating top knife

**Controlled fixed** mount adapter - allows head to float during processing mode

**Over 25 improvement** updates in recent years.

**12 tooth** swing out saw disc provides 24" (610mm) quality cut at an impressive speed

**High Performance** disc saw combines speed, reliability and low operating costs





# Specifications\*

## MODEL

Cutting Capacity

## DIMENSIONS

Weight

Top Saw

Delimb Diam. Capacity

Knives/Arms

**DISC DATA** (Can vary depending on the type of disc and choice of teeth)

Tip-to-tip diameter

Rated saw speed

Number of teeth

Saw kerf

Weight with holders and teeth

Style

## OTHER

Recommended carrier size

Black Bruins 940 cc motors

9000 lbf feed force (@4000psi)

13 ft/sec feed speed (@85gpm)

Standard steel rolls - thumbnail rolls optional

## 5660

24" (610mm)

7,300lbs (3,152kg)

12" (305mm)

type 0.404"

2"-22"/

(51mm-559mm)

1 Knife/4 arms

35.2" (894mm)

760rpm

12

1 5/8" (41mm)

300lbs (136kg)

Segmented

22 ton class plus

\*Specifications are subject to change without notice. Weights & measurements are approximate.

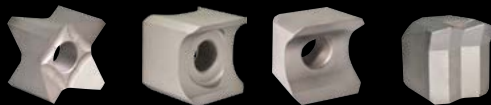
# QUADCO

www.quadco.com • 800.668.3340

# 45" & 56" Mowers



**45" & 56" DRUM MOWERS**  
EXTREMELY HEAVY-DUTY DRUM MOWERS.  
PAIR WITH QUADCO MOWER TEETH FOR  
A COMPLETE MULCHING SYSTEM.



\*QUAD TOOTH®  
STYLES

## Features

**Mulches vegetation** into fine material

**Variable displacement**  
Rexroth 160 cc motor

**Improved drum** now  
3/4"(19mm) high  
strength thick steel

**Easy access doors**

**Optional boom adapter**  
with matching pins or  
quick attach available  
for most carriers

**Rugged roller bearings**  
on the drum shafts



**56" Belt Driven**

**\*Different Quad Tooth®**  
styles available Reversible,  
Planer, Beaver and Carbide



**45" Direct Drive**

**Wear resistant anvil**  
plate and skis

**Fits all 20t+ excavators**  
or feller bunchers

# 45" & 56" Drum Mowers

## Specifications\*

MODEL	45	56
Cutting Swath	45" (1,143mm)	56"(1,422mm)
DIMENSIONS		
Height	37" (940mm)	49" (1,245mm)
Width	31" (787mm)	32" (813mm)
Length	73" (1,854mm)	71" (1,803mm)
Weight (excluding boom adapter and pins)	2,780lbs (1,266kg)	3,875 (1,488kg)
Number of teeth	26	26
OTHER		
Large bent-axis, variable displacement, high-pressure motor 160 cc		
Heavy-duty protection chain for discharge control		
RECOMMENDED FOR		
Hydraulic flow	45+gpm(170L/min)	45+gpm (170L/min)
Hydraulic Pressure	3,771psi(260bar)	3,771psi (260bar)
Drum speed	1,800-2,200rpm	1,800-2,200rpm
AVAILABLE OPTIONS		
Custom made drums for special applications		

\*Specifications are subject to change without notice. Weights & measurements are approximate.

# QUADCO

www.quadco.com • 800.668.3340



**FORESPRO® DELIMBERS** - SMART & SIMPLE DESIGN.

**MONOBOOM** - IDEAL IN LARGE SOFTWOODS OR THE TOUGHEST HARDWOODS.

**TELESCOPIC** - FAST CYCLES, COMPACT AND VERSATILE

# Delimbers

Monoboom M3041-M3441-M3445

Telescopic T3054-T3454

## Features



**Monoboom**

**Optional butt saw** is normally positioned at the back, on the carriage

**Cleanest and Simplest** hydraulics on the market

**Shift from Work to Transport** position so pulleys drop automatically reducing transport height (Monoboom only)



**Telescopic**

**Chain drive** system reduces expense of replacement parts. Drive Shaft size is 2- 15/16" (74.6mm) transport height

**Tensioner** uses hand winch to maintain hose tension and keep it away from the chain (Telescopic only)



# Specifications\*

\*Specifications are subject to change without notice. Weights & measurements are approximate.

MODEL	T3054	T3454	M3041/M3032**	M3441/M3432**	M3445
<b>DIMENSIONS</b>					
Weight	22,000lbs (9,979kg)	22,600lbs (10,251kg)	20,800lbs (9,435kg)	21,600lbs (9,798kg)	21,900lbs (9,934kg)
Length (overall)	42'5" (12,929mm)	42'5" (1,2929mm)	52'4" (1,5952mm)	52'4" (15,952mm)	56'4" (17,170mm)
Tunnel Opening	30" (762mm)	34" (864mm)	30" (762mm)	34" (864mm)	34" (864mm)
Delimb Diam. Capacity	3/4" (19mm)-	3/4" (19mm)-	2" (51mm)-	2" (51mm)-	2" (51mm)-
36" (914mm)	36" (914mm)	39" (991mm)	39" (991mm)	38" (965mm)	
Top Saw Capacity	22" (559mm)	22" (559mm)	24" (610mm)	31" (787mm)	31" (787mm)
Butt Saw Capacity	26" (660mm)	26" (660mm)	26" (660mm)	26" (660mm)	36" (914mm)
Boom Size Outer	12" (305mm)x	12" (305mm)x	12" (305mm)x	12" (305mm)x	12" (305mm)x
	12" (305mm)	12" (305mm)	12" (305mm)	12" (305mm)	12" (305mm)
Inner	8" (203mm)x	8" (203mm)x	N/A	N/A	N/A
	6" (152mm)	6" (152mm)	-	-	-
Thickness	1/2" (13mm)	1/2" (13mm)	N/A	N/A	N/A
Boom Stroke	54' 4" (1,6561mm)	54' 4" (16,561mm)	41' (12,497mm)	41' (12,497mm)	45' (13,716mm)
Delimb length with trough	Unlimited	Unlimited	Unlimited	Unlimited	Unlimited
Chain Size	140 Gauge	140 Gauge	140 Gauge	140 Gauge	140 Gauge
Max. Feed Speed Up To	16Ft/Sec	16Ft/Sec	13 Ft/Sec	13 Ft/Sec	12 Ft/Sec
Feed Force (@3200 psi)*	8,000-13,000lbs	8,000-13,000lbs	8,000-13,000lbs	8,000-13,000lbs	8,000-13,000lbs
	(3,629kg-5,897kg)	(3,629kg-5,897kg)	(3,629kg-5,897kg)	(3,629kg-5,897kg)	(3,629kg-5,897kg)
<b>RECOMMENDED FOR</b>					
Minimum Carrier Size	20t	20t	22t	22t	22t
Hydraulic Flow	110gpm (416L/min)	110gpm (416L/min)	110gpm (416L/min)	110gpm (416L/min)	110gpm (416L/min)
Maximum Pressure	4,500psi (310bar)	4,500psi (310bar)	4,500psi (310bar)	4,500psi (310bar)	4,500psi (310bar)
<b>ADDITIONAL MODELS**</b>	<b>N/A</b>	<b>N/A</b>	<b>M3032</b>	<b>M3432</b>	<b>N/A</b>
Weight	-	-	20,000lbs/(9072kg)	20,800lbs/(9435kg)	-

Both models - Overall length: 43'4" (13,208mm); Boom Stroke: 32' (9,753mm); Minimum carrier: 20t

## QUADCO

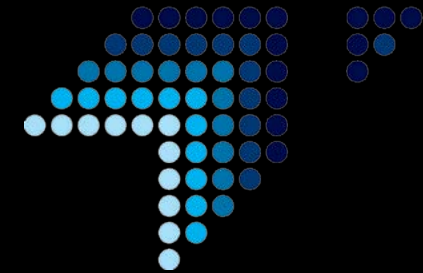
www.quadco.com • 800.668.3340

# Computer

TECHNION

**xLOGGER**

Intelligent and fast control system to maximize productivity (used on 5660).



- Linux based operating system
- Many options for production reports



## SPECIFICATIONS

- 8,4 inch TFT display with mouse control
- Optional 12" touch screen
- Up to 6 species in handling at any time
- Numerous sorts available for each species
- Large number of presets for each species
- Inch or metric display units
- Inch or metric programming
- On screen trouble shooting features
- USB back up and software updates
- Plug in connections for all cables
- Many safety features for operators
- GPS capability

xLogger systems have been designed with years of experience in forestry information and control systems.

- StanFor 2010 compatible
- Optimized cross cutting control
- Comprehensive data managing and monitoring
- Software "thinks" to optimize productivity
- Control system can be connected to PC \*
- Enables fully integrated harvester head and base machine control

\*Operator may freely choose the head function locations in the joysticks



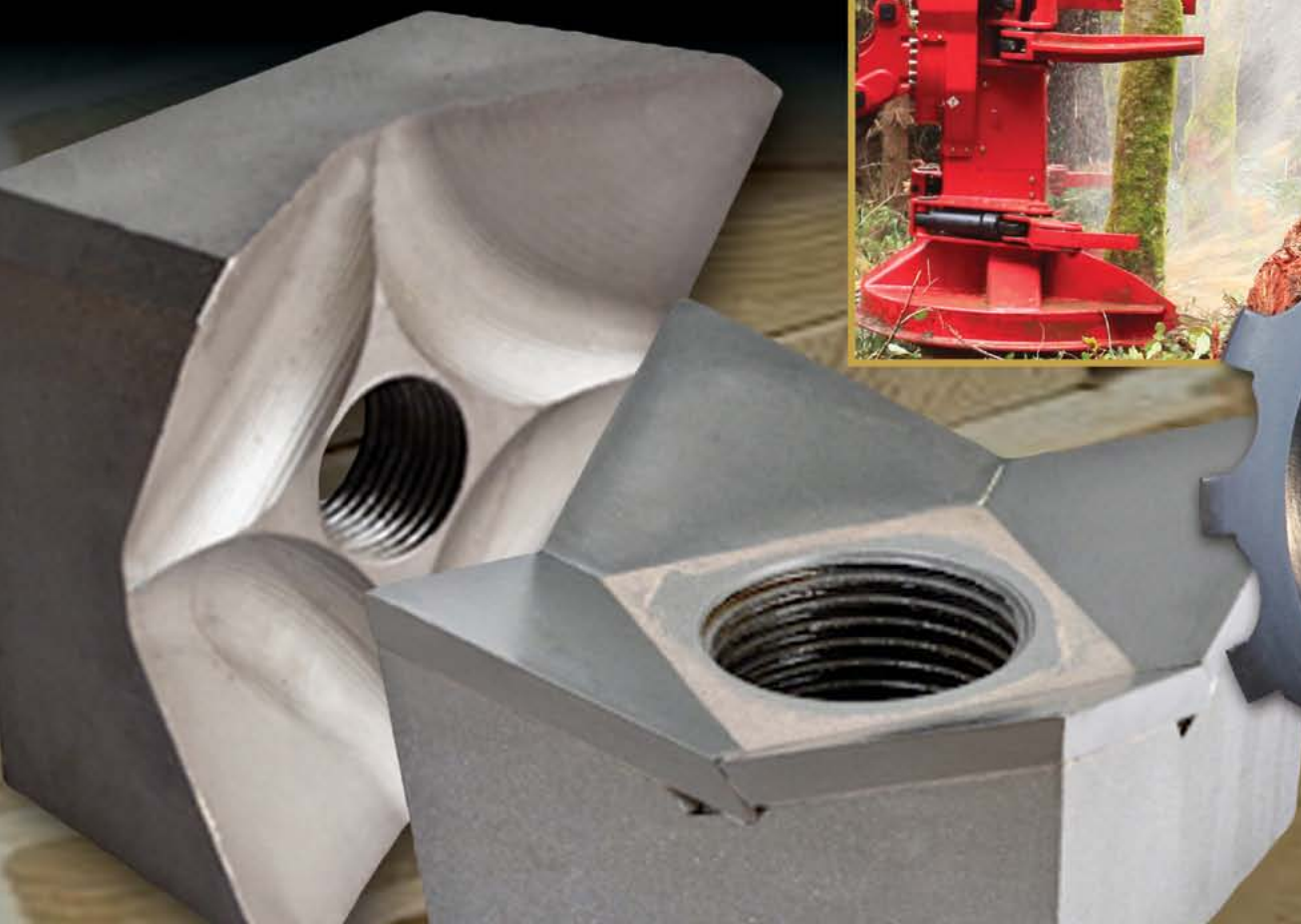
# The No. 1 Forestry Saw Tooth

- **20+ YEARS OF R&D** - **QUADCO** produces the longest lasting saw teeth
- **CONTINUOUS TESTING** - for the most effective product performance available
- **SMOOTH TAPERED DESIGN** - to eliminate drag and increase efficiency
- **PATENTED OVERLAPPING TIPS** - on carbide teeth to prevent blow-by

**Increased  
Savings  
All Around!**

**QUADCO**

800-668-3340 • [www.quadco.com](http://www.quadco.com)



**Saw discs available for all  
makes and models**

# QUADCO

Recognized worldwide as an industry leader in the manufacturing and distribution of forestry teeth and attachments, QUADCO focuses on reliability, low cost, low maintenance, and maximum production when it comes to engineering products for loggers.

## CUTTING TOOLS & COMPONENTS

Grinder teeth  
Mower teeth  
Saw teeth  
Saw discs  
Rotators

## FORESTRY ATTACHMENTS

Forestry mowers  
Felling heads  
Delimbers  
Processors  
Harvesters

See our Saw Teeth & Discs and  
Mower & Grinder Teeth  
guides on our website



Check out our **Facebook** page for  
more info and promotions.  
[www.facebook.com/quadco](http://www.facebook.com/quadco)

[www.quadco.com](http://www.quadco.com) 800.668.3340