



# **ROTOBEC**

TOUGH HANDLING EQUIPMENT

## **HORIZON LOADER**

by ROTOBEC



Loader shown with options and accessories.

**ROTOBEC INC.**  
Head office

Ph.: 418.383.3002  
Fax: 418.383.5334  
rotobec@rotobec.com

**ROTOBEC WEST**  
Western Canada & Western USA

Ph.: 250.765.1161  
Fax: 250.765.0035  
rotobecwestsales@shaw.ca

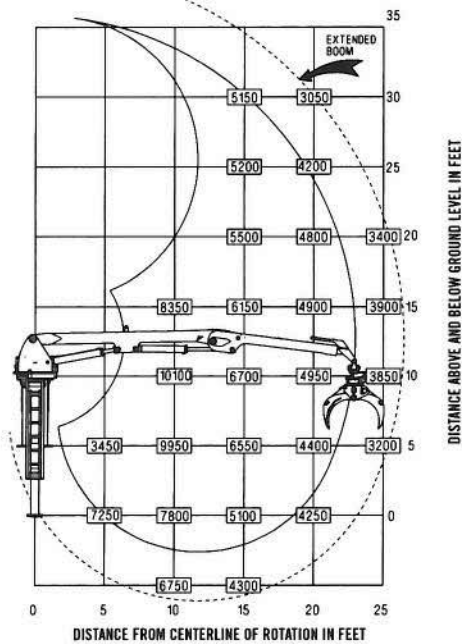
**ROTOBEC USA, INC.**  
Eastern & Central

Ph.: 603.444.2103  
Fax: 603.444.0327  
sales@rotobecusa.com

# HORIZON LOADER

by ROTOBEC

## ROTOBEC HORIZON LOADER WITH OPTIONAL 27 FT TELESCOPIC BOOM Approximate lift capacity in pounds (less attachment)



### RANGE/LIFT DIAGRAM Horizon Loader

## SPECIFICATIONS

### BOOMS:

- Standard boom reach: 23' (7,01 m)
- Main boom length: 156" (3962 mm)
- Stick boom length: 122" (3099 mm)
- Main boom structure: rectangular 7" x 9" (178 mm x 229 mm) high tensile steel
- Stick boom structure: rectangular 8" x 7.5" (203 mm x 191 mm) high tensile steel
- One 55 Watt halogen work light on each side of the stick boom
- Boom pivot points: 2.5" (63,5 mm) diameter induction tempered and chromed steel pins mounted on bronze bushings
- Complete main boom cycle: 8.7 sec. with 2,3 gpm (87 lpm)
- Complete stick boom cycle: 7.7 sec. with 2,3 gpm (87 lpm)

### CYLINDERS:

- ROTOBEC built hydraulic cylinders with bolt-on head, wear ring and chrome plated tempered steel rod
- Main boom: bore 5" (127 mm) rod 3" (76,2 mm)
- Stick boom: bore 5" (127 mm) rod 3" (76,2 mm)
- Telescopic stabilizers: bore 4" (101,6 mm) rod 2.5" (63,5 mm) with lock valves

### HYDRAULIC SYSTEM:

- Hydraulic oil cooler
- Precision of loader movement provided by two monoblock control valves including relief valves
- Booms and attachment controlled by joysticks
- Requires a double pump 23/23/ U.S. gallons/minute (87/87 liters/minute) at 1500 rpm
- 8 ports Hydraulic oil manifold
- Operating pressure: 3200 psi (220 bars)

### SWING SYSTEM:

- Powerful continuous 360° rotation
- 32.1" (816 mm) outside diameter slewing ring
- Safety device locking the swing for transit
- Rotation speed 8.8 rpm at 23 gpm
- Powered by 2 motors
- Controlled by pedals

### STABILIZERS:

- Independently controlled telescopic stabilizers
- 9'4" (2845 mm) spread at grade
- 13" (330 mm) below grade reach

### WEIGHT:

- 7,380 lb (3348 kg) approximately (excluding attachment and options)

### RECOMMENDED ATTACHMENTS:

- Attachment choice varies on application

### OPTIONS:

- Boom reach
  - With M25 25' (7,62 m)
- Telescopic stick boom activated by electric switch on joystick
  - With MT27
    - Reach when extended: 26'5" (8,05 mm)
    - Reach when retracted: 22'11" (6,99 mm)
  - With MT29
    - Reach when extended: 27'5" (8,36 mm)
    - Reach when retracted: 23'11" (7,29 mm)
- Double pump 23/23/ U.S. gallons/minute (87/87 liters/minute) at 1500 rpm
- Aluminum hydraulic oil tank 55 US gallons designed to be installed on the side of the truck frame, return lines with filters and magnet
- Loader mounting kit including spacer (if required)
- Installation kit

V.20080819-00



# ROTOBEC™

www.rotobec.com