

**OPTIMAX**  
STATIONARY MOUNT

**ROTOBEC**  
TOUGH HANDLING EQUIPMENT



**THE ULTIMATE MULTITASKER**  
ENDLESS OPTIONS. INFINITE POSSIBILITIES.





ROTOBEC OPTIMAX SM-W W/ LOG GRAPPLE & SAW

The OPTIMAX truly pushes the boundaries of what was once thought possible of a mid-weight loader. In addition to Rotobec's tough handling pedigree that comes standard in all of our loaders, we have engineered the OPTIMAX to be adaptable to every conceivable application and environment. The list of available options is incredibly extensive, making it without a doubt the most versatile loader of its kind. This highly efficient powerhouse offers a modern alternative to traditional diesel powered loaders that will significantly reduce your carbon footprint and save you thousands in annual operating costs.





# TOUGH HANDLING EQUIPMENT

THE TOUGHNESS YOU NEED. THE RELIABILITY YOU DESERVE. Speed, precision, and agility, all packaged up into one tough handling machine.

**21,400 LB** MAX LIFT CAPACITY

**40 INCH** SLEWING RING

**75 HP** HIGH EFFICIENCY ELECTRIC PREMIUM MOTOR

**3,200 PSI** OPERATING PRESSURE

**27 FT** HEAVY DUTY BOOM (STANDARD)

**35 CC** DUAL SWING MOTORS



# THE EFFICIENCY EXPERT

The OPTIMAX and its 75 hp high efficiency electric engine will allow you to achieve unimaginable cost savings when compared to similar size diesel loaders without sacrificing an ounce of its lifting capabilities.

## GREEN MACHINE

The OPTIMAX will not only save you thousands each year in operating expenses. It will also help you save the world. On average, an electric engine will emit 40%-50% less greenhouse gases than a comparable diesel engine. The electric engine can also help significantly reduce both noise and air pollution at your job site.

## LESS WALKING, MORE WORKING

Walking a machine to and from the fuel depot is an expensive process that can cost you hundreds of hours each year in production downtime. In many applications, a stationary mount loader will allow you to accomplish the same task as a tracked loader without the need for costly trips for fuel.

## ANNUAL OPERATING COST (ELECTRIC VS. DIESEL)

<b>OPTIMAX 950</b> 400 kWh/day @ \$.07/hr	<b>\$10,220</b>
<b>DIESEL EXCAVATOR</b> 75 gal/day @ \$2.81/gal	<b>\$76,923</b>
<b>TOTAL COST SAVINGS</b>	<b>\$66,703</b>

\* kWh cost based on 2015 US National average industrial sector cost (EIA).

\* Diesel cost based on 2015 US National average (EIA).

\* Daily consumption based on 10 hr work day

# NO TIME FOR DOWNTIME

## QUALITY COMPONENTS

In order to guarantee the quality and reliability of your machine, we proudly manufacture and assemble every major component of the OPTIMAX in one of our North American production facilities. Each component is constructed of only the best quality materials available, and is built with one purpose: To outperform and outlast the competition.

## SERVICE MADE SIMPLE

Our number one priority is your productivity. Machine downtime is a costly inconvenience and we have taken every measure to ensure that our customers experience as little of this as possible. Our expert team of service technicians are conveniently located all across North America and are dedicated to providing our customers with the best service in the business.







ROTOBEC OPTIMAX SM-X W/ ORANGE PEEL GRAPPLE & MAGNET





ROTOBEC OPTIMAX SM-X W/ LOG GRAPPLE







# VERSATILITY REDEFINED

The OPTIMAX is without question the most versatile loader of its size. With four unique configurations available and the industry's most extensive list of options, there is no limit to possibilities.

## CONFIGURATIONS

### SM-X

**Power unit:** On loader

**Operator station:** On loader

### SM-R

**Power unit:** Remote

**Operator station:** Remote

### SM-W

**Power unit:** On loader

**Operator station:** Remote

### SM-H

**Power unit:** Remote

**Operator station:** On loader

## OPERATOR STATION

The cab of the OPTIMAX is the largest available in its class. An ergonomic seat and optional heating and A/C offers comfortable place for your operator to spend their day. A pressurized cab can be added for extreme working environments.

### STANDARD:

- Ergonomic seat
- Extra large cab (48" x 60")
- Mounted on shock proof frame
- Sliding side window
- Front wipers with washer fluid
- Cab fan
- Horn
- 4,000 W electric heater
- 12 v outlet
- Roof lights

### OPTIONAL:

- Air conditioning
- Tinted windows
- Windshield protection grid
- CB radio
- am/fm/cd radio w/ dual speakers
- Pressurized cab

## ADDITIONAL OPTIONS

### BOOMS:

- Hydraulic/dead heel for tree length wood
- LED Lights
- Work lights (directed sideways)
- Telescopic options

### ENGINE:

- 100 hp high efficiency motor

### HYDRAULICS:

- Extra cooling
- Harsh environment package
- Cylinder protectors

### OTHER:

- Anchor kit
- Electrically activated grease system
- Magnet
- Catwalk
- Saw

## CUSTOMIZATION

Rotobec has been designing and manufacturing loaders for 40 years. During that time, our custom loader division has worked on several projects for customers who had unique requirements that the competition could simply not meet. Our team of engineers worked closely with these customers to provide them with a solution to meet those needs.

If you have a requirement that is not met by our current product let us know. Rotobec is open to any custom project and we are always looking for a new challenge.

**HYDRAULIC SYSTEM**

Operating pressure	3,200 psi
Features	<ul style="list-style-type: none"> <li>Variable displacement piston pump</li> <li>Double function joystick</li> </ul>

**SWING SYSTEM**

Rotation	Continuous 360°
Slewing ring	38" outside diameter
Rotation speed	8.5 rpm
Swing torque	Actual: Estimated at 30,402 ft. lb
Features	<ul style="list-style-type: none"> <li>Double function joysticks activate the boom and the attachment</li> <li>Pedal activated rotation</li> <li>Limited rotation (optional)</li> <li>Dual swing motor 35 cc and reducing gear box</li> </ul>

**CYLINDERS**

Main boom	7" bore, 4" rod
Stick boom	6" bore, 3" rod
Features	<ul style="list-style-type: none"> <li>Cylinder protectors (optional)</li> <li>Bolt-on head</li> <li>Wear ring</li> <li>Chrome plated tempered steel rod</li> </ul>

**POWER UNIT**

Engine	75 hp high efficiency electric premium motor
Features	<ul style="list-style-type: none"> <li>600 v, 3 phase, 60 Hz</li> <li>Electric panel w/ 2 x 15 A/ 120 v outlets</li> <li>Cut off switch</li> <li>Thermostat oil cooler</li> <li>99 gal oil tank</li> </ul>

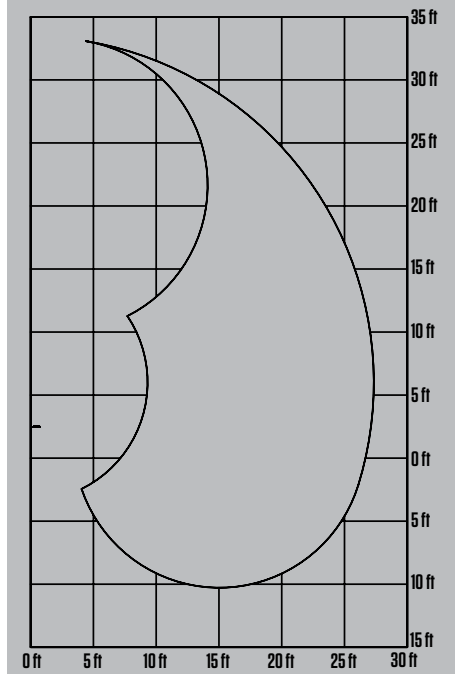
**BOOM**

Structure	Rectangular structure made of high tensile steel
Pivots	3" diameter heat-treated and chromed pins mounted on bronze bushings
Complete motion	<b>Main:</b> 10 sec <b>Stick:</b> 10 sec
Features	<ul style="list-style-type: none"> <li>Live and dead heels (optional)</li> <li>Induction tempered, chrome steel pins on bronze bushings</li> <li>Telescopic booms activated by electric button and proportionately controlled by lever</li> <li>2 x 55 W lights on stick boom</li> </ul>

**BOOM LENGTH OPTIONS**

Standard	27'
Non-telescopic	30'
Telescopic	32'

**BOOM SWEEP OPTIMAX 950 SM-X 27'**



**LIFT CAPACITY (lbs)**

		DISTANCE FROM CENTER OF ROTATION (ft)			
		10	15	20	25
OPTIMAX 950 SM-X-M27	HEIGHT (ft)				
	30		12,496		
	25		12,177	11,176	
	20		13,134	11,429	*9,416
	15	*14,487	14,949	12,122	10,175
	10	*21,406	16,698	12,727	10,098
	5	*11,297	17,171	12,683	9,339
	0	*16,060	15,642	11,297	
	-5		11,528		
-10		11,180			

\* Limited by stick boom hydraulic capacity

\*\* Lift capacities calculated at 100% operating pressure

\*\*\* We reserve the right to change specs and improve our products without notice or obligation

11105\_V.20171121\_V2

**ROTOBEC LOCATIONS**

CANADA EAST/  
INTERNATIONAL  
Sainte Justine, QC  
Tel: 418.383.3002

USA EAST, CENTRAL  
Littleton, NH  
Tel: 603.444.2103

USA SOUTH  
Dallas, TX  
Tel: 972.242.9516

USA/CANADA  
WEST  
Kelowna, BC  
Tel: 250.765.1161

BRAZIL  
Curitiba, Paraná  
Tel: 41.98852.5999