

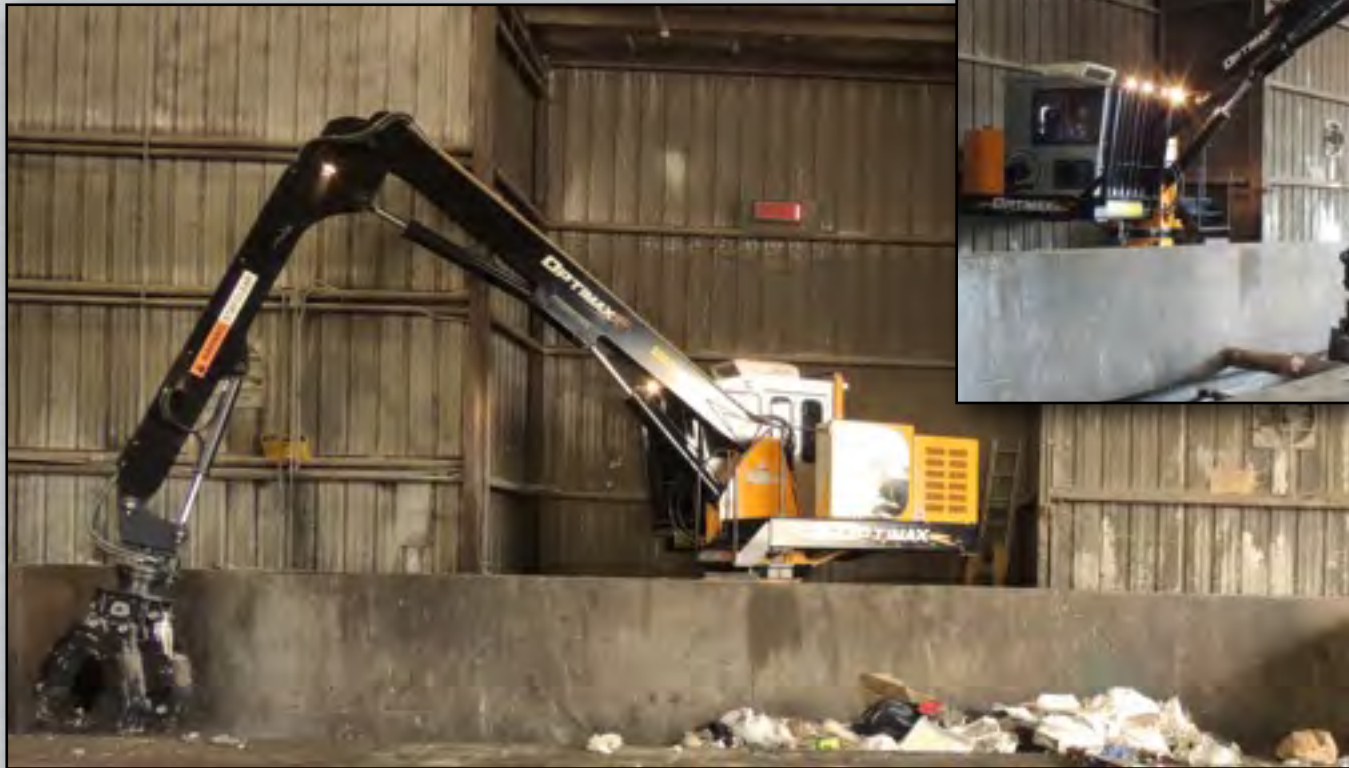


# ROTOBEC™

TOUGH HANDLING EQUIPMENT

## OPTIMAX

STATIONARY MOUNT LOADER



[WWW.ROTOBEC.COM](http://WWW.ROTOBEC.COM)

INDUSTRIAL

FORESTRY

SCRAP

WASTE

LOADERS



# ROTOBEC™

TOUGH HANDLING EQUIPMENT

## SPECIFICATIONS

### BOOMS

- Standard Boom Reach: 26.9'
- Main boom structure: high tensile steel
- Stick boom structure: high tensile steel
- Boom pivot points: heat-treated and chromed pins mounted on bronze bushings
- 2 work lights 55 W on each side of stick boom

### OPTIONS:

- Hydraulic heel boom for tree length wood
- Dead heel boom for tree length wood
- Telescopic boom reaching 31.8'

### CYLINDERS

Rotobec design and fabrication with wear ring, chromed rods made of induction heat and treated steel.

- Main boom cylinder:  
7" bore x 42.25" stroke x 3.5" rod
- Stick boom cylinder:  
6" bore x 38.25" stroke x 3" rod
- Optional cylinder protectors

### SWING SYSTEM

- Continuous rotation with cross roller slewing ring (38.1" OD)
- Dual swing motors 35cc and reducing gearbox
- Load sensing directional valve
- Actual rotation torque estimated at 30,402 Nm

### CAB

- Dimensions: 48" x 60"
- Isolated, mounted on rubber shockproof frame
- Roof window, sliding side windows, tinted glass on all windows
- Fan
- Windshield wiper and washer
- 2x55W halogen lights

### OPTIONS:

- Heater
- Air Conditioner
- Front Windshield guard
- Cab extension (12") wider on right side
- AM/FM Radio
- CB Radio

### HYDRAULIC SYSTEM

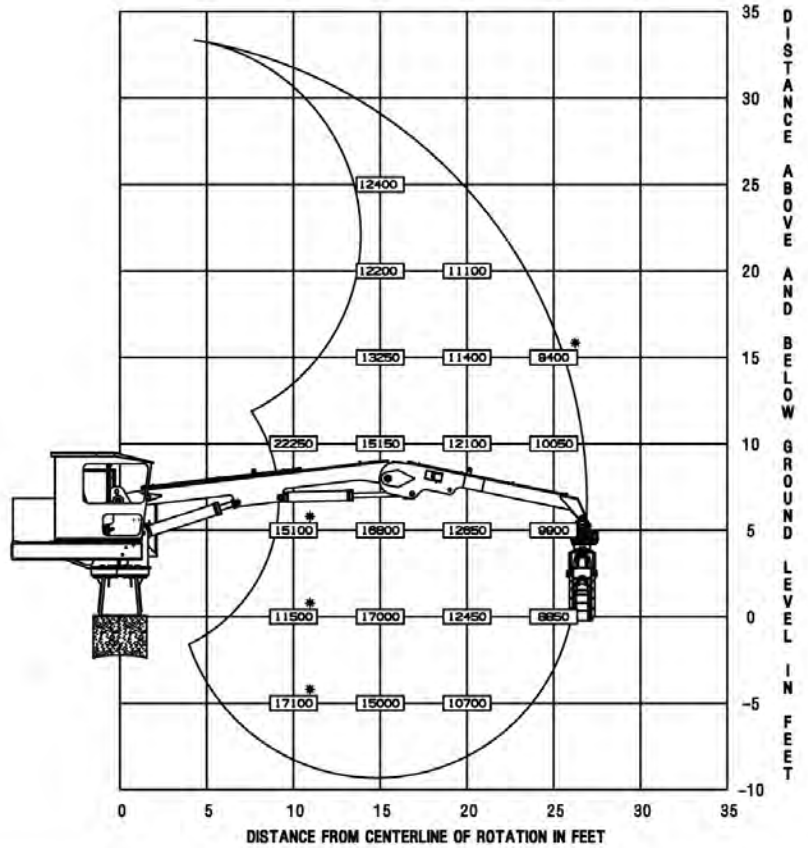
- Quadruple pump (43/33/22 gpm, 160/126/83 lpm)
- High-pressure system 3,200 psi

### MISCELLANEOUS

- Available with various attachments for handling logs, scrap or bulk materials

APPROXIMATE LIFT CAPACITY IN POUNDS (LESS ATTACHMENT)

ROTOBEC OPTIMAX SM 27 FT RANGE/LIFT DIAGRAM



**RANGE/LIFT DIAGRAM**  
Optimax Loader

## IDEAL FOR HANDLING

- Logs
- Waste
- Scrap Metal
- Bulk Materials

## Contact Us

Rev. 2801.13



**Rotobec Inc.**  
Head Office  
Tel: 418.383.3002  
Fax: 418.383.5334  
rotobec@rotobec.com

**Rotobec West**  
Western Canada and Western U.S.A.  
Tel: 250.765.1161  
Fax: 250.765.0035  
rotobec@rotobec.com

**Rotobec USA Inc.**  
Eastern and Central USA  
Tel: 603.444.2103  
Fax: 603.444.0327  
rotobec@rotobec.com