

Technical Specifications
SENNEBOGEN Tracked Material Handler



Leading Through Innovation

Engine
Model Cummins QSB 4.5, Tier 4F
Net Power 132 HP (97 kW)

Operating Weight
R/Crawler Undercarriage 55,115 lb (25,000 kg)

Reach
Standard 34'2" (10.42 m)

Magnet System
Rating 9 kW

818E_{R-HD}

SENNEBOGEN

Technical Specifications 818 R-HD “E”

ENGINE	
model	Cummins QSB4.5-C130
type	in-line, 4 cylinder, cooled exhaust gas recirculation, water cooled
emission	EPA Tier 4F
net power	132 HP (97 kW) @ 2200 rpm
injection	high pressure common-rail
displacement	4.5 L (272 cu.in.)
bore	4.21 in (107 mm)
stroke	4.88 in (124 mm)
aspiration	turbo charged, charge air cooled
fuel tank	87 gal (330 L)
air filtration	direct flow filtration system dual stage filter with pre-filter
control	integrated ECM automatic idle - stop eco mode
ELECTRICAL	
alternator	95 V/Ah
starter	24 V, 4.8 kW
battery	2 x 12 V, 150 Ah
lights	2 x cab roof, type halogen 2 x frame upper carriage, type H4
HYDRAULIC SYSTEM	
system type	LUDV load sensing pilot pressure controlled open center
pump type	variable-displacement axial-piston pump
max. pump flow	82 gal (310 l/min)
max. pressure	5,076 psi (350 bar)
hydraulic tank	69 gal (260 L)
filtration	dual filtration system 3 micron (HydroClean)
COOLING	
cooling type	cool-on-demand, suction-type fan system, side by side
hydraulic / water	hydraulic fan drive axial piston pump, reversible fan thermostatically controlled, closed loop system
charge air	direct fan drive
WEIGHT	
operating weight	55,115 lb (25,000 kg)

SWING SYSTEM	
swing speed	0 - 8 rpm
swing hydraulic	open loop
drive	1 x axial piston motor driving planetary rbox, integrated brake vales
swing brake	multidisc brake, spring loaded
swing bearing	internal teeth, sealed ball bearing
UPPER CARRIAGE	
design	torsion-free upper frame with continuous bearing-plates for optimal power introduction, precision pivot; excellent design; very low noise emission
TRAVEL / UNDERCARRIAGE	
type	crawler R25/240
system	fixed wide gauge
drive	independent driven by an axial piston motor through a compact planetary
travel speeds	0-1.4 mph (0-2.4 km/h)
shoes	26.6" (600 mm) (triple grouser)
crawler	B4HD maintenance free
steering	foot pedals / levers
safety	travel alarm
REFILL CAPACITIES	
fuel tank	87 gal (330 L)
engine cooling system	10.6 gal (40 L)
engine oil w / filter	7.53 gal (28.5 L)
hydraulic tank	69 gal (260 L)
hydraulic system	180 gal (680 L)
swing gear (each)	1.06 gal (4.0 L)
final drive (each)	2.38 gal (9.0 L)
swing ring lubrication reservoir	0.26 gal (1.0 L)
central lubrication reservoir	5.5 lb (2.5 kg)
MAGNET SYSTEM	
rating	9 kW
voltage (magnetized)	230 V
current (cold condition)	39 Amps
drive	hydraulic

Subject to technical modification.

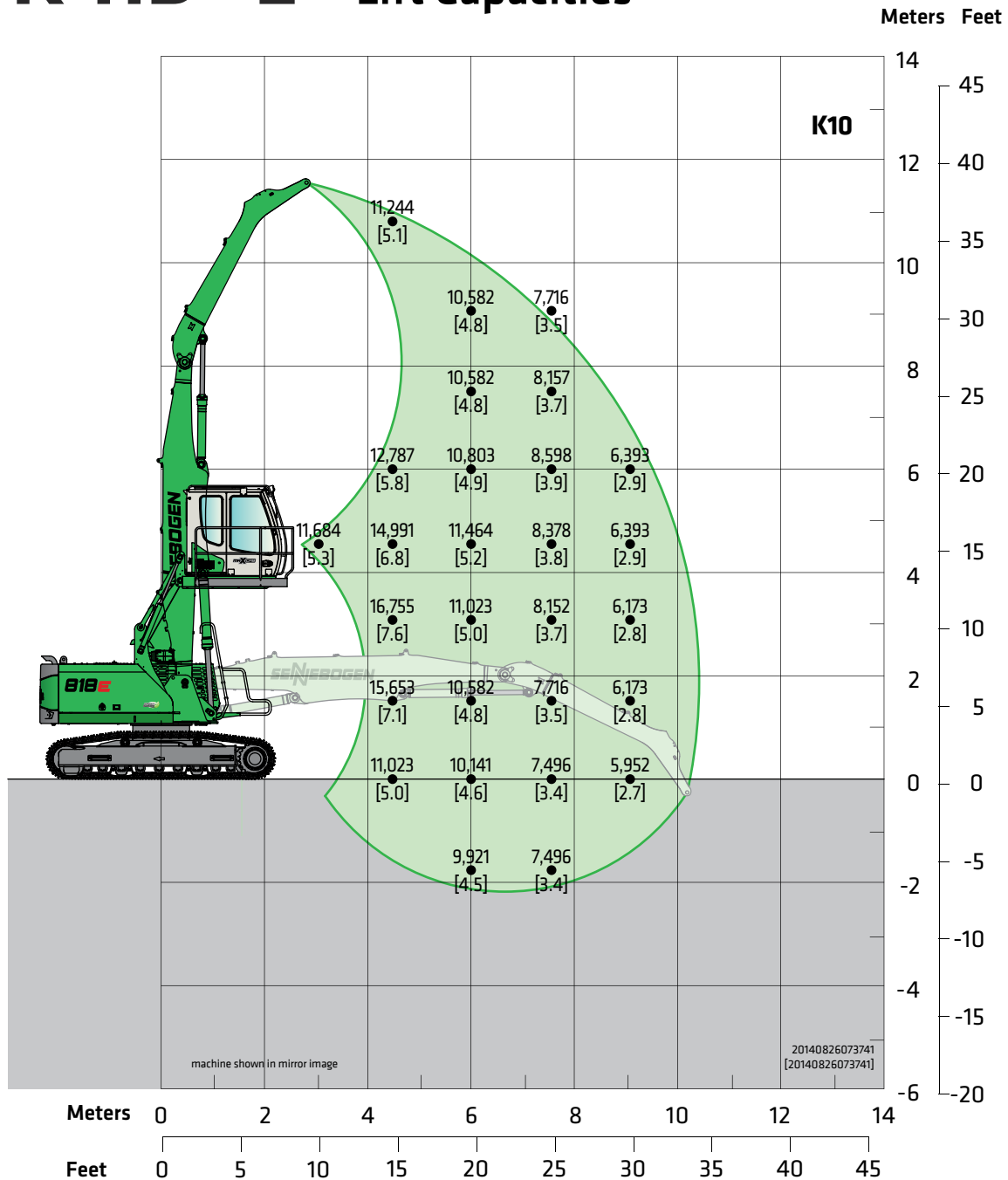
Standard / Optional Equipment 818 R-HD "E"

ENGINE		OPERATOR'S CAB (maXCab)	
Water separator in fuel line	●	Hydraulic elevating cab system E270	●
Automatic idle / engine stop control	●	Multi adjustable, air suspended operator's seat 3" (76 mm) seat belt	●
Eco mode	●	Seat heater	●
Air Filter Pre-cleaner	●	Automatic climate control (heater / AC)	●
Visual fuel tank check	●	Air outlets w / defroster	●
Heated water separator	●	Storage area for lunch box	●
Engine block pre-heater	○	Large cup holder	●
ELECTRIC		HYDRAULIC	
Battery disconnect switch	●	Pilot pressure controlled variable displacement pump	●
Centralized fuse box	●	Thermostatically controlled cooling system	●
Battery jump start connection from ground level	●	Centralized hydraulic test ports	●
HYDRAULIC		Protection covers for pilot pressure control valves	●
Pilot pressure controlled variable displacement pump	●	3 micron dual filtration system (HydroClean)	●
Thermostatically controlled cooling system	●	Load sensing, flow on demand hydraulic system	●
Centralized hydraulic test ports	●	Optimized Hydraulic pump regulation (GLR)	●
Protection covers for pilot pressure control valves	●	Visual hydraulic tank check from ground level	●
3 micron dual filtration system (HydroClean)	●	Attachments open, close & rotation hydraulics	●
Load sensing, flow on demand hydraulic system	●	Hydraulic tank shut off valve	●
Optimized Hydraulic pump regulation (GLR)	●	Electrical hydraulic tank pre-heater	○
Visual hydraulic tank check from ground level	●	Biodegradable hydraulic oil	○
Attachments open, close & rotation hydraulics	●	Hydraulic circuit for scrap shear	○
Hydraulic tank shut off valve	●	Hydraulic circuit for hammer, breaker	○
Electrical hydraulic tank pre-heater	○	Additional hydraulic circuits	○
Biodegradable hydraulic oil	○	UPPER CARRIAGE	
Hydraulic circuit for scrap shear	○	Rear view & right side view camera system	●
Hydraulic circuit for hammer, breaker	○	Automatic lubrication system	●
Additional hydraulic circuits	○	Anti-slip mats on walking area	●
UPPER CARRIAGE		Lockable side doors	●
Rear view & right side view camera system	●	Handrails on top of upper carriage	●
Automatic lubrication system	●	Mirror left side	●
Anti-slip mats on walking area	●	Turning signal lights in upper carriage frame	●
Lockable side doors	●	Removable panels	●
Handrails on top of upper carriage	●	Additional light package	○
Mirror left side	●	Custom colors	○
Turning signal lights in upper carriage frame	●	Seawater paint coating	○
Removable panels	●	UNDERCARRIAGE	
Additional light package	○	Heavy duty designed material handling under carriage	●
Custom colors	○	Crawler undercarriage with mechanical fixed tracks	●
Seawater paint coating	○	Heavy duty crawler track frame	●
UNDERCARRIAGE		23.6" (600 mm) triple grouser track shoes, canted	●
Heavy duty designed material handling under carriage	●	Maintenance free crawler B4HD	●
Crawler undercarriage with mechanical fixed tracks	●	Hydraulic chain tension device	●
Heavy duty crawler track frame	●	Travel alarm	●
23.6" (600 mm) triple grouser track shoes, canted	●	Centralized lubrication points	●
Maintenance free crawler B4HD	●	MAGNET SYSTEM	
Hydraulic chain tension device	●	Hydraulic driven generator	●
Travel alarm	●	Magnet controller	●
Centralized lubrication points	●	Magnet suspension link	○
MAGNET SYSTEM		SWING SYSTEM	
Hydraulic driven generator	●	Automatic lubrication system	●
Magnet controller	●	ATTACHMENTS	
Magnet suspension link	○	Orange peel grapple	○
SWING SYSTEM		Clamshell	○
Automatic lubrication system	●	Magnet	○
ATTACHMENTS		Log grapple	○
Orange peel grapple	○	Scrap shear	○
Clamshell	○	Power attachment	○
Magnet	○	Live heel / dead heel	○
Log grapple	○	WORKING EQUIPMENT	
Scrap shear	○	Purpose-built material handling boom	●
Power attachment	○	Purpose-built material handling stick	●
Live heel / dead heel	○	Attachment hydraulic line connections with ball valves	●
OPERATOR'S CAB (maXCab)		Safety check valves for stick cylinders	●
Hydraulic elevating cab system E270	●	Safety check valves for boom cylinders	●
Multi adjustable, air suspended operator's seat 3" (76 mm) seat belt	●	Cylinder end position dumping	●
Seat heater	●	Bronze bushings connected to automatic lubrication system	●
Automatic climate control (heater / AC)	●	Boom limitation	●
Air outlets w / defroster	●	Stick limitation	○
Storage area for lunch box	●	Halogen light package boom	○
Large cup holder	●	Purpose-built material handling stick with reversing linkage	○
Fire extinguisher	●	Purpose-built material handling boom for scrap shears	○
Tinted windows with safety glass	●		
Door window as sliding window	●		
AM / FM Radio with CD player & speakers	●		
Removable floor mat	●		
SenCon diagnostic system	●		
Multicolor monitor	●		
Tilt out front window	●		
Halogen light package on cab roof	●		
Mechanical hour meter	●		
Sliding door	●		
Catwalk w / handrail	●		
12 V / 24 V power outlet	●		
Windshield wiper and washers	●		
Emergency exit hammer	●		
Safety lever	●		
Sun shades	●		
Interior lighting	●		
Rain cover over front window	●		
Outside mirror	●		
Optical and acoustic warning system	●		
Positive filtered ventilation (pressurized cab)	●		
Safety check valves for elevating cab cylinder	●		
Foot rest	●		
maXCab industry	○		
Windshield protection guard	○		
Skylight protection guard	○		
Skylight FOPS guard	○		
Bullet proof windshield	○		
Bullet proof skylight	○		
Polycarbonate side windows	○		
Additional light package	○		
Fixed cab elevation	○		
Operator's cab with floor window	○		
Steering column instead of joystick steering	○		
Steering column in combination with joystick steering	○		
Additional cameras	○		

Subject to technical modification.

Standard Equipment ●
Optional Equipment ○

818 R-HD "E" Lift Capacities



Working Equipment K10

reach	34'2" (10.42 m)
boom	20'4" (6.2 m)
stick	13'9" (4.2 m)

Operator's Cab

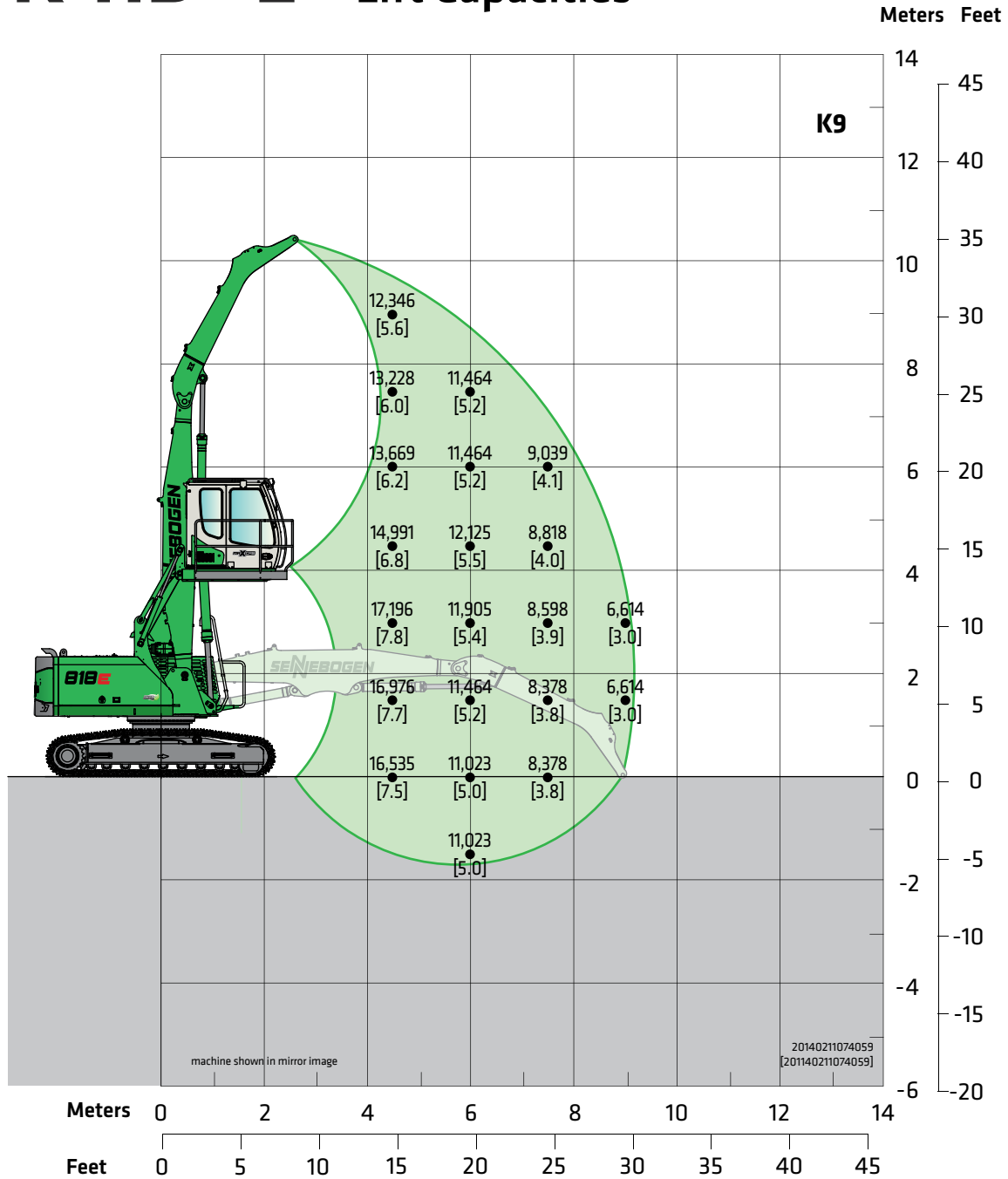
model	E270 maXCab
	hydraulic elevating up
	8'8" (2.65 m elevation)
eye level	approx. 17'7" (5.35 m)

Undercarriage

model	R25/240
	B4HD
tires	23'6" (600 mm)
	triple grouser shoes

Lift capacities are stated in pounds. Values in brackets [] are stated in metric tons. Indicated figures are based on ISO 10567 and do not exceed 75% or tipping and 87% of hydraulic capacity and machine standing on firm, level supporting surface. Loads are valid for 360° with machine support on outriggers. Lifting capacities do not include working equipment such as orange peel grapples, magnets, clamshells, etc. The load point is the center line of the attachment pivot mounting pin on the stick. Their weights must be deducted from the numbers indicated in the lifting charts. Please contact SENNEBOGEN or your local dealer for optimum attachment selection. The operator / user of the machine should be fully acquainted with the operator's & safety manual provided by Sennebogen. Capacities apply only to the machine as originally manufactured and equipped by SENNEBOGEN.

818 R-HD "E" Lift Capacities



Working Equipment K9

reach	30'1" (9.17 m)
boom	17'5" (5.3 m)
stick	12'6" (3.8 m)

Operator's Cab

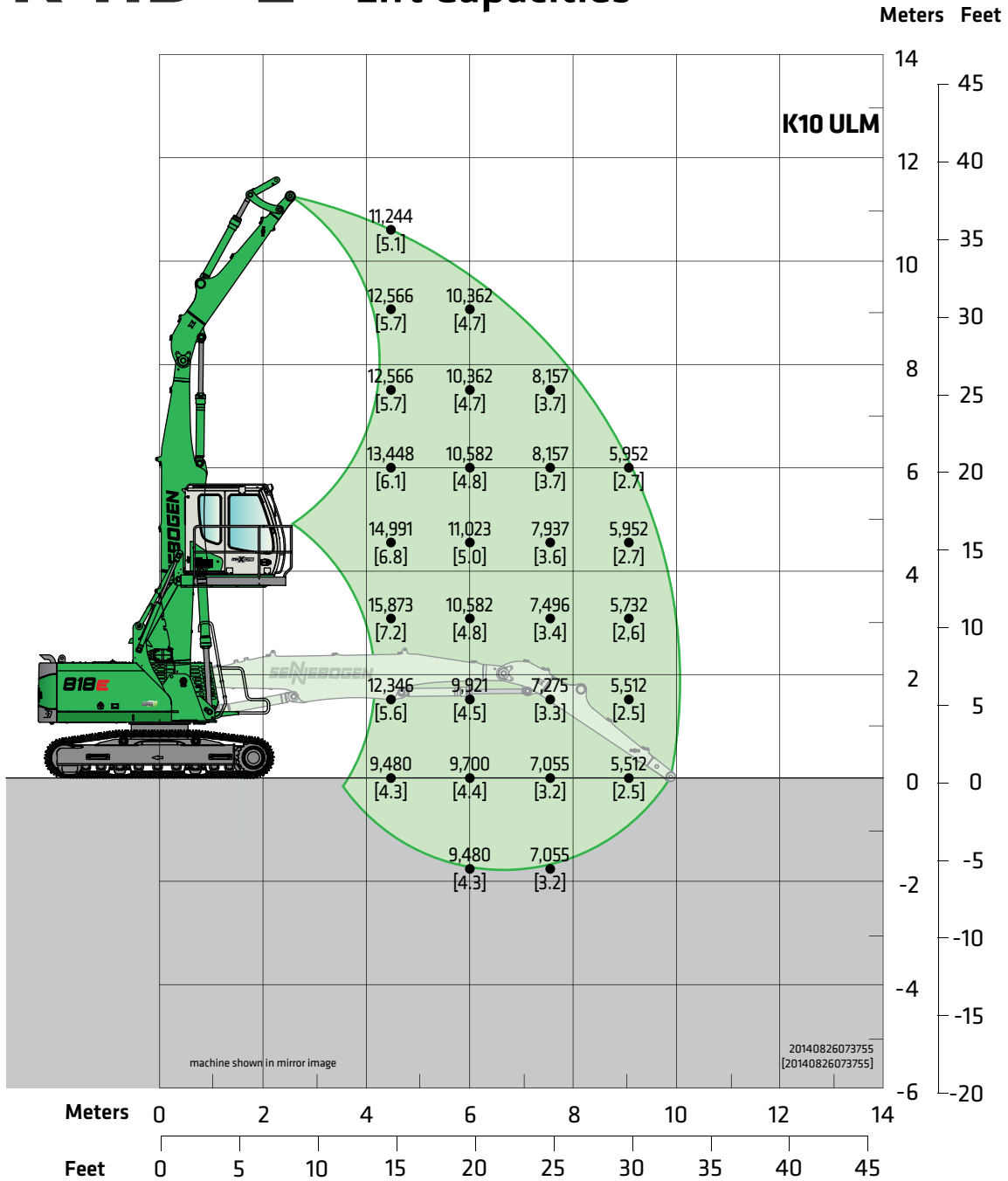
model	E270 maXCab
	hydraulic elevating up
	8'8" (2.65 m elevation)
eye level	approx. 17'7" (5.35 m)

Undercarriage

model	R25/240
	B4HD
tires	23'6" (600 mm)
	triple grouser shoes

Lift capacities are stated in pounds. Values in brackets [] are stated in metric tons. Indicated figures are based on ISO 10567 and do not exceed 75% or tipping and 87% of hydraulic capacity and machine standing on firm, level supporting surface. Loads are valid for 360° with machine support on outriggers. Lifting capacities do not include working equipment such as orange peel grapples, magnets, clamshells, etc. The load point is the center line of the attachment pivot mounting pin on the stick. Their weights must be deducted from the numbers indicated in the lifting charts. Please contact SENNEBOGEN or your local dealer for optimum attachment selection. The operator / user of the machine should be fully acquainted with the operator's & safety manual provided by Sennebogen. Capacities apply only to the machine as originally manufactured and equipped by SENNEBOGEN.

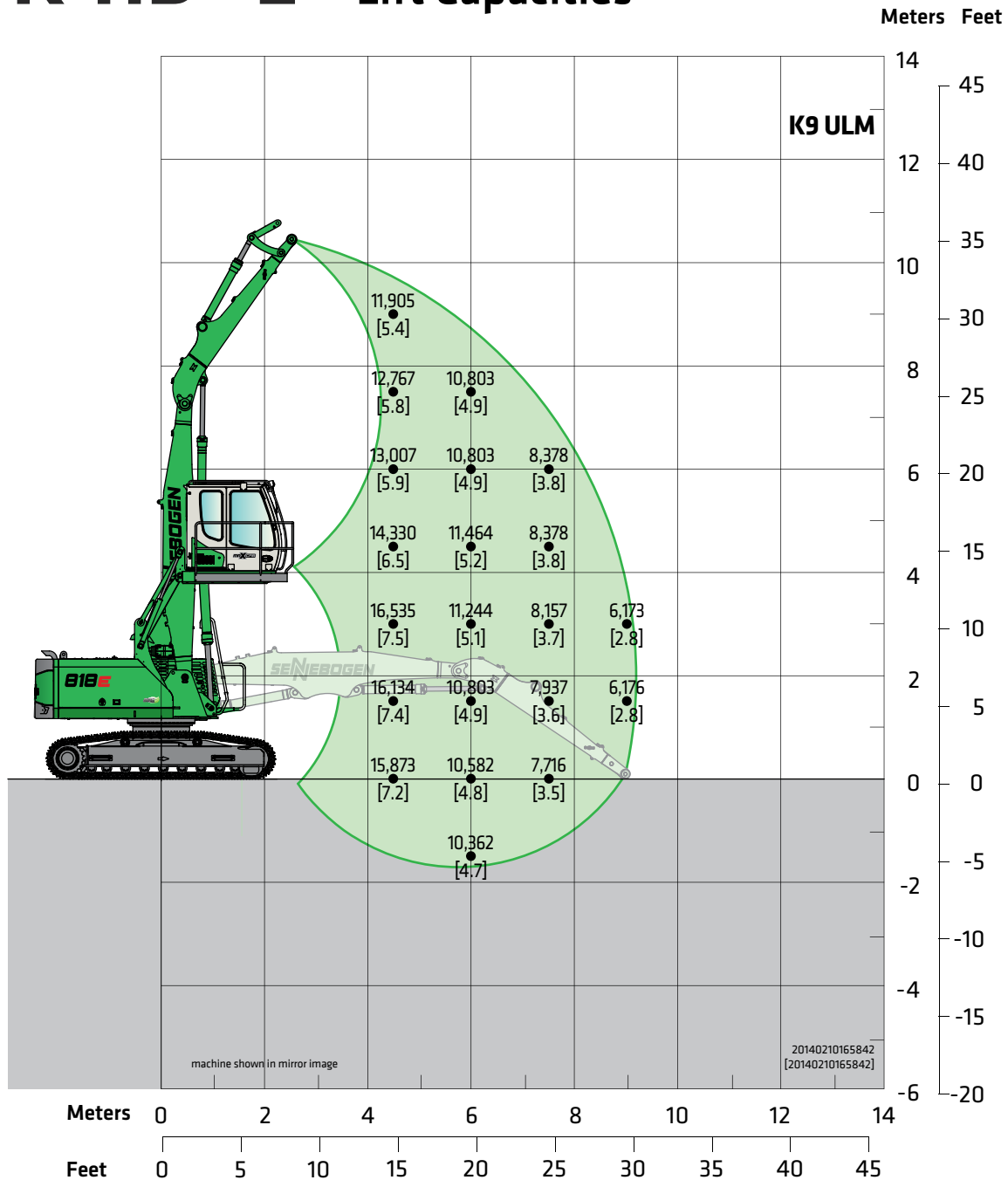
818 R-HD "E" Lift Capacities



Working Equipment K10 ULM		Operator's Cab		Undercarriage	
reach	33'2" (10.1 m)	model	E270 maXCab	model	R25/240
boom	20'4" (6.2 m)		hydraulic elevating up		B4HD
stick	12'6" (3.8 m) ULM	eye level	8'8" (2.65 m elevation)	tires	23'6" (600 mm)
			approx. 17'7" (5.35 m)		triple grouser shoes

Lift capacities are stated in pounds. Values in brackets [] are stated in metric tons. Indicated figures are based on ISO 10567 and do not exceed 75% or tipping and 87% of hydraulic capacity and machine standing on firm, level supporting surface. Loads are valid for 360° with machine support on outriggers. Lifting capacities do not include working equipment such as orange peel grapples, magnets, clamshells, etc. The load point is the center line of the attachment pivot mounting pin on the stick. Their weights must be deducted from the numbers indicated in the lifting charts. Please contact SENNEBOGEN or your local dealer for optimum attachment selection. The operator / user of the machine should be fully acquainted with the operator's & safety manual provided by Sennebogen. Capacities apply only to the machine as originally manufactured and equipped by SENNEBOGEN.

818 R-HD "E" Lift Capacities



Working Equipment K9 ULM

reach	30'2" (9.2 m)
boom	17'5" (5.3 m)
stick	12'6" (3.8 m) ULM

Operator's Cab

model	E270 maXCab
	hydraulic elevating up
	8'8" (2.65 m elevation)
eye level	approx. 17'7" (5.35 m)

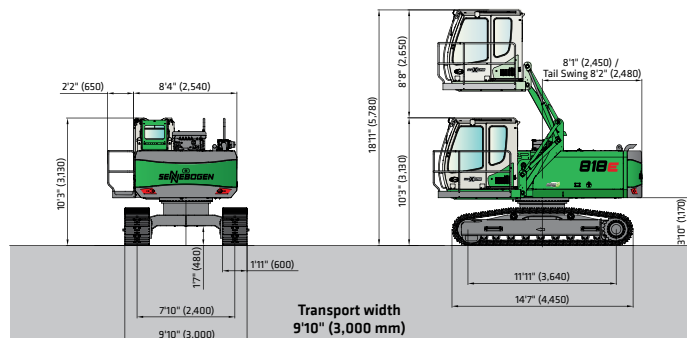
Undercarriage

model	R25/240
	B4HD
tires	23'6" (600 mm)
	triple grouser shoes

Lift capacities are stated in pounds. Values in brackets [] are stated in metric tons. Indicated figures are based on ISO 10567 and do not exceed 75% or tipping and 87% of hydraulic capacity and machine standing on firm, level supporting surface. Loads are valid for 360° with machine support on outriggers. Lifting capacities do not include working equipment such as orange peel grapples, magnets, clamshells, etc. The load point is the center line of the attachment pivot mounting pin on the stick. Their weights must be deducted from the numbers indicated in the lifting charts. Please contact SENNEBOGEN or your local dealer for optimum attachment selection. The operator / user of the machine should be fully acquainted with the operator's & safety manual provided by Sennebogen. Capacities apply only to the machine as originally manufactured and equipped by SENNEBOGEN.

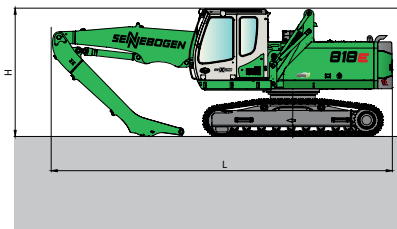
818E R-HD

Dimensions



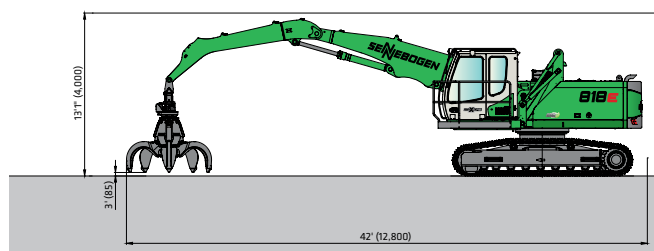
818 R-HD with undercarriage R25/240 and hydraulic elevating cabin type E270

Transport dimensions

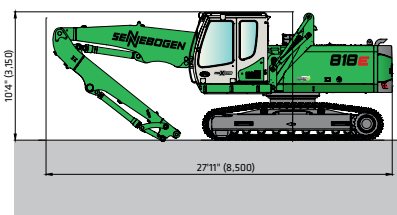


818 R-HD undercarriages type R25/240 and working equipment K9

	Loading Boom	Grabstick	Transport Length (L)	Transport Height (H)
K9 ULM	17'5" (5.3 m)	12'6" (3.8 m) ULM	27'11" (8.5 m)	10'4" (3.15 m)
K9	17'5" (5.3 m)	12'6" (3.8 m)	27'11" (8.5 m)	10'4" (3.15 m)



818 R-HD with K9 compact boom 17'5" (5.3 m) and loading stick 12'6" (3.8 m) with SENNEBOGEN orange peel grab



818 R-HD with K9 compact boom ULM 17'5" (5.3 m) and loading stick 12'6" (3.8 m)

"Under our policy of continuous improvements we reserve the right to change specifications, materials and design without prior notice. The illustrations shown may include optional equipment. Always refer to the appropriate Operation and maintenance manual for specific product information. See your local SENNEBOGEN dealer for further information."

© 2017 SENNEBOGEN LLC, all rights reserved

SENNEBOGEN

SENNEBOGEN LLC
1957 Sennebogen Trail
Stanley, NC 28078, USA

Phone +1 (704) 347-4910
Fax +1 (704) 347-8894
Email sales@sennebogenllc.com

GO FOR GREEN

www.sennebogen-na.com

818R/E-08/17