

SENEBOGEN



 **164 kW**

 **38 - 43.5 t**

 **14 - 17 m**

 **MAX CAB**

830E

Material handling machine

Tier IVf emission standards

830E Advanced. The E-Series.



1962: rope-driven S833
with elevated operator cab

What makes up the E-Series

- 60 years of experience in designing and constructing hydraulic material handling machines
- Uncompromisingly high performance in all areas: focus on material handling
- Technology that can be mastered: high-quality components without over-engineering
- Long product service life and high value retention

Your top benefits:

- 1 Green Efficiency**
Save fuel – reduce operating costs
Work quietly – protect operator and environment
- 2 Performance at the highest level**
Durable mechanical systems – stressed parts optimized
High speeds – high load capacities
- 3 Maximum ease of use**
Maxcab comfort cab – work in comfort
SENCON – SENNEBOGEN Control System
- 4 Maximum safety**
Safe entry and exit – no-slip steps
State-of-the-art cameras – entire work area in view
- 5 Maintenance and service made easy**
Easy error diagnostics – central measuring points
Simple maintenance – clear labelling
- 6 Consultation and support**
3 production locations – 2 subsidiaries
120 sales partners – more than 300 service stations





830E The E-Series. At a glance.



Four ways to save fuel

- Up to 20 % savings: working in Eco Mode with reduced engine speed
- Idle automation reduces speed to 40 % of operating speed
- Stop automation switches the engine off when not needed
- Optimized engine settings, reduced specific fuel consumption, state-of-the-art exhaust aftertreatment



Quiet operation

- Consistently quiet operation thanks to decoupled engine mounts and soundproofing in the doors **3**
- Sound pressure level reduced by up to 4.5 dB; sound power level according to 2000/14/EC up to 2 dB lower than required

High-capacity cooling

- Constant, reliable performance thanks to large-dimensioned and robust fans and coolers **4**
- Water and oil coolers with top-notch efficiency thanks to axial-piston pump and motor control and on-demand thermostatic control
- Charge-air cooler with mechanical drive



Maximum safety

- No-slip work surfaces
- Peripheral railing (option) 1
- 2 cameras to the right and rear
- Platform with railing next to cab sliding door 2



Smart cooler technology

- Comes standard: automatic, fast and strong fan reversal for blowing out coolers and continuous cooling capacity 5
- Side-by-side coolers, easily accessible and clean cooling technology 6
- Fuel savings through optimized fan operation

Powerful hydraulic system

- Strong pumps with power reserves
- Top efficiency thanks to large-dimensioned hydraulic valves and lines
- Extra-long change intervals of 4000 operating hours through initial fill-up with special oil with extended service life when using SENNEBOGEN HydroClean* 7

* Optional, see page 7

830E The E-Series. Pure comfort.

Maxcab comfort cab

- Air-suspension comfort seat with heater
- Convenient joystick control
- Hinged front window
- Sliding door, platform in front of cab
- Color monitor for right side and rear-facing camera feeds
- SENNEBOGEN OptiMode: Various modes to optimize performance



Platform with railing

- Safety when entering and exiting the cab
- Sliding door makes entering and exiting easy and safe



Automatic climate control

- Consistently pleasant cab climate thanks to 10 evenly distributed air vents
- Central controls make operation easy



SENCON

- Clear menu
- Determine operating values without the need for additional instruments
- Fast troubleshooting thanks to detailed messages

830E Maintenance and service made easy



Optimized for maintenance

- Fast and easy troubleshooting thanks to straightforward and clearly labeled electrical distributor
- Easy access to all service points on the machine
- Automatic central lubrication for equipment and slewing gear raceway



HydroClean*

- Optimal protection of hydraulic components thanks to 3 µm micro-filter
- Cleaner hydraulic oil, longer oil service life



Central reading points

- Easily accessible, central reading points
- Quickly inspect entire hydraulic system








Clear labeling

- All parts labeled with a unique part number
- Easy and reliable spare parts ordering

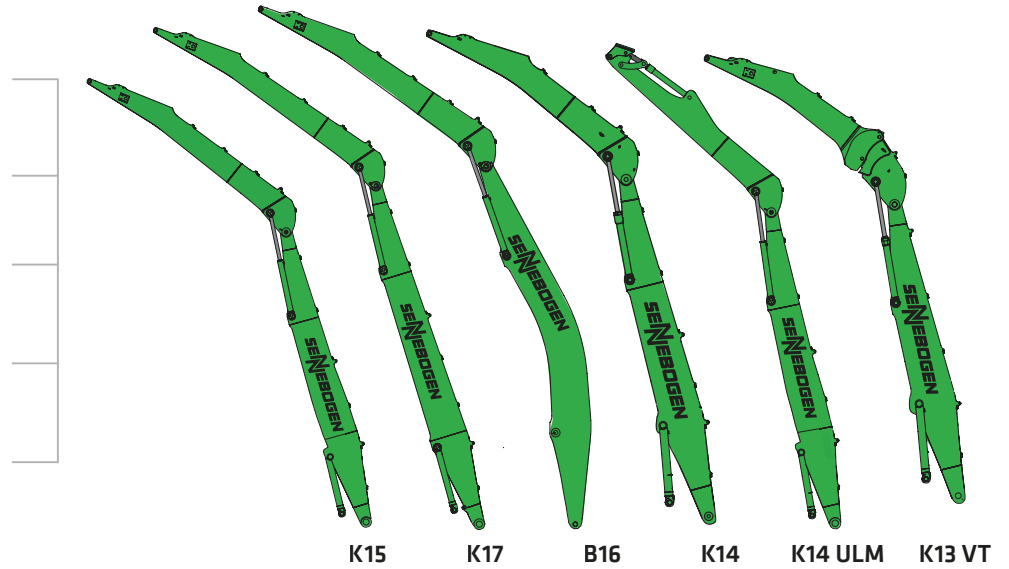
* Optional

830E Modular design – versatile solutions

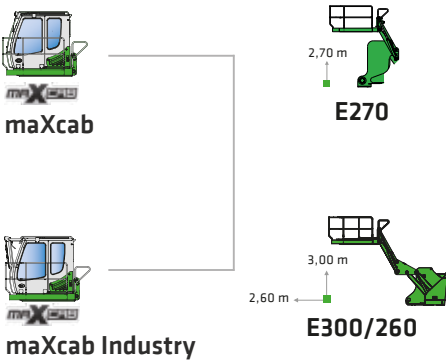
Attachments

-  Multi-shell grab
-  Double shell grab
-  Magnetic plate
-  Scrap metal shears
-  Vacuum traverse

Equipment options (others available upon request)



Cab elevation



Uppercarriage



 Diesel-hydraulic drive

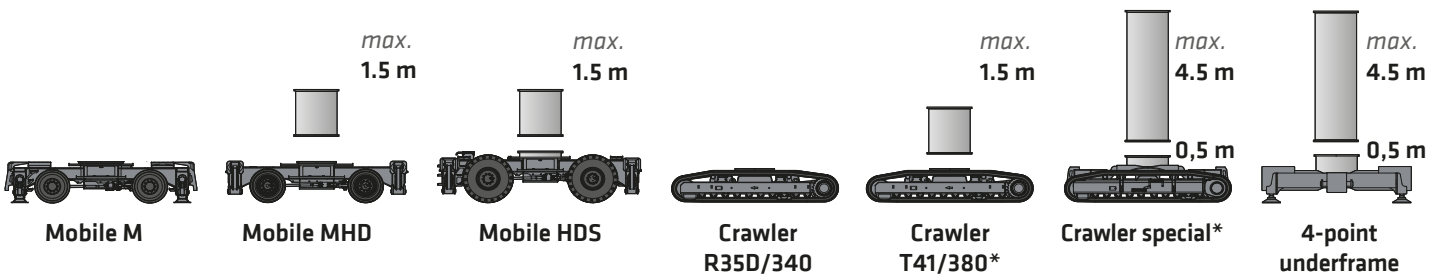
 Electrohydraulic drive

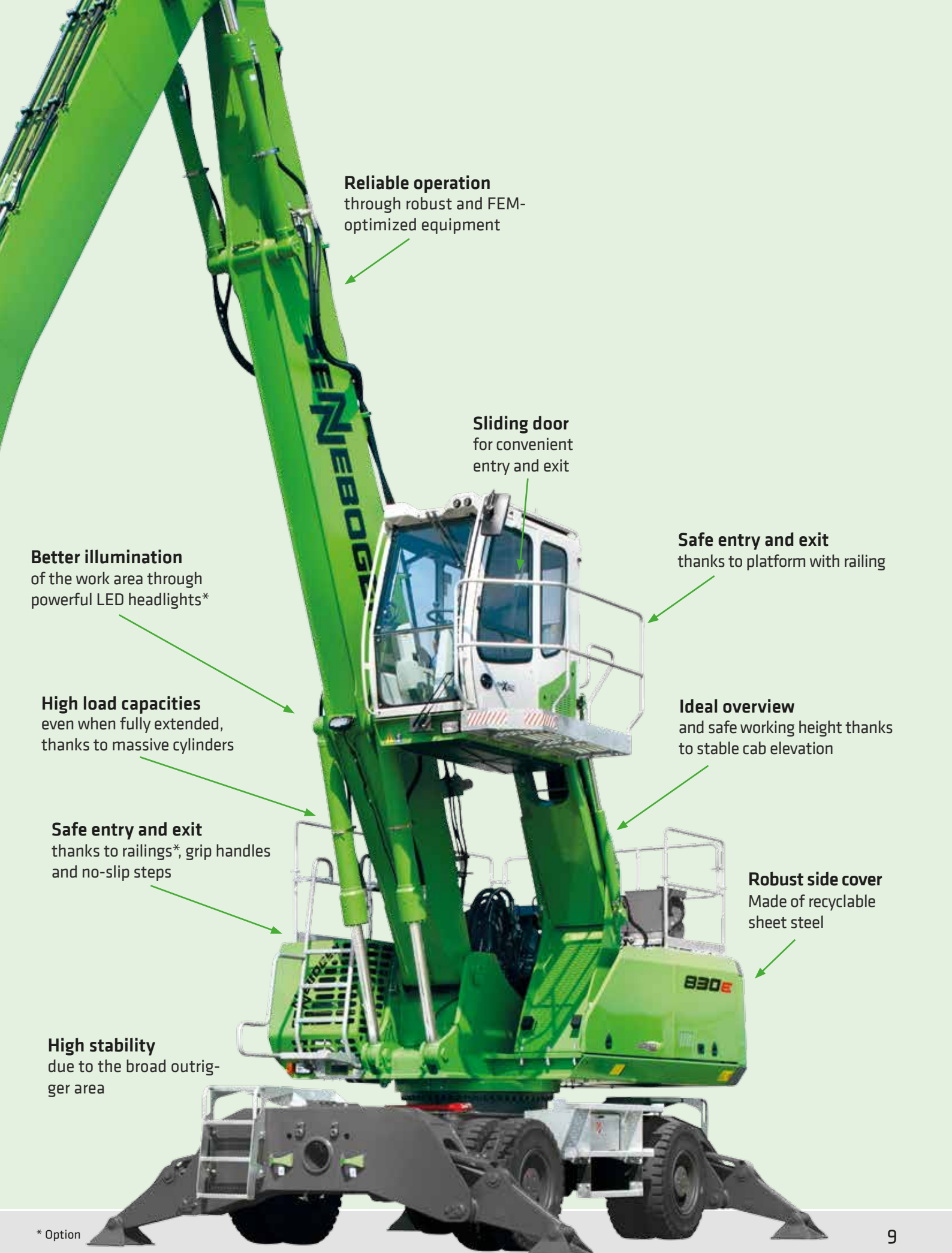
Options

 Engine line drum

 Transformer

Undercarriage variants





Reliable operation
through robust and FEM-
optimized equipment

Sliding door
for convenient
entry and exit

Safe entry and exit
thanks to platform with railing

Better illumination
of the work area through
powerful LED headlights*

High load capacities
even when fully extended,
thanks to massive cylinders

Ideal overview
and safe working height thanks
to stable cab elevation

Safe entry and exit
thanks to railings*, grip handles
and no-slip steps

Robust side cover
Made of recyclable
sheet steel

High stability
due to the broad outrig-
ger area

* Option

830E Technical data, equipment

MACHINE TYPE

Model (type) **830**

ENGINE

Power **164 kW/223 hp at 2000 rpm**

Model **Cummins QSB 6.7 – C220 TIER III or IVf**
Direct injection, turbo charged, charge air cooler, reduced emissions, Eco Mode, idle automation, stop automation

Cooling Water-cooled

Diesel filter with water separator and heating system

Air filter Dry filter with integrated pre-separator, automatic dust discharge, main element and safety element, contamination indicator

Fuel tank **500 l**

DEF tank **30 l**

Electr. system **24 V**

Batteries **2 x 150 Ah**, main switch

Options

- Engine block heater for temperatures below -20 °C
- Electric fuel pump
- Jump-start terminals

UPPERCARRIAGE

Design Torsion-resistant box design, precision crafted, steel bushings for boom bearings. Extremely service-friendly design, longitudinal engine

Central lubrication Automatic central lubrication for equipment and slewing gear raceway

Electrical system Central electrical distributor, battery disconnect switch

Cooling system 3-circuit cooling system with high cooling output, thermostatically regulated fan drive for oil cooler and water cooler, fan reversal for cleaning

Options

- Slewing gear brake via foot pedal
- Peripheral uppercarriage railing for additional safety
- LED lighting package
- Fire extinguisher
- Maritime climate varnish for corrosion protection
- Electric heater for hydraulic tank for temperatures below -20 °C
- Low-temperature package for use at temperatures below -20 °C
- Hydraulically driven magnetic generator 15 kW/20 kW

HYDRAULIC SYSTEM

Load sensing / LUDV hydraulic system for hydraulic, pilot-controlled work functions

Pump type Swashplate-type variable-displacement piston pump, load pressure-independent flow distribution for simultaneous, independent control of work functions

Pump control Zero-stroke control, on-demand flow control – the pumps only pump as much oil as will actually be used, pressure purging, load limit sensing control

Operating pressure **max. 350 bar**

Filtration High-performance filtration with long change interval

Hydraulic tank **310 l**

Control system Proportional, precision hydraulic actuation of work movements, 2 hydraulic servo joysticks for the work functions, additional functions via switches and foot pedals

Safety Hydraulic circuits secured with safety valves, emergency lowering of the equipment at engine standstill, pipe fracture safety valves for lift cylinder and stick cylinder

Options

- Bio-oil – environmentally friendly
- ToolControl for programming pressure/rate for up to 10 tools
- Additional hydraulic circuit for shear attachment
- Load moment warning with capacity utilization indicator
- Overload safeguard with overload shutdown
- 3 µm hydraulic micro-filter - SENNEBOGEN HydroClean

SLEWING DRIVE

Gearbox Compact planetary gear with slant-axis hydraulic motor, integrated brake valves

Parking brake Spring-loaded multi-disk brake

Slewing ring Strong ball race slewing ring, sealed

Slewing speed 0-8 rpm, variable

830E Technical data, equipment

CAB MAX CAB

Cab type	Hydraulically elevating cab E270
Cab equipment	Sliding door, excellent ergonomics, automatic climate control, heated, air-suspension comfort seat, fresh/circulating air filter, joystick control, 12 V/24 V connections, SENCON
Options	<ul style="list-style-type: none"> ■ Cab E300/260 can be elevated 300 cm and moved forward 260 mm hydraulically ■ Rigid cab height elevation 1 m (MHD, MHDS, trailer 1.50 m) ■ Joystick steering ■ Auxiliary heating system with timer ■ Activated carbon filter in cab for fresh/circulating air ■ Steering wheel with adjustable steering column ■ Sliding window in operator door ■ Armored glass windshield, additional safety ■ Armored glass roof window, additional safety ■ Safety side window ■ Floor window for a better view ■ Rolling shade for roof window and windshield ■ Protective roof grating ■ FOPS protective roof grating ■ Protective front grating ■ Radio and CD player with speakers ■ Enlarged industrial cab with undivided armored glass windshield

ATTACHMENTS

Design	Decades of experience, state-of-the-art computer simulation, highest level of stability, longest service life, large-dimensioned and low-maintenance bearing points, sealed special bearing bushes, precision-crafted, quick-release couplings on the connections - open/close/rotate grapple
Cylinders	Hydraulic cylinders with high-quality sealing and guide elements, end position damping, sealed bearing points
Options	<ul style="list-style-type: none"> ■ Ball valves on the hydraulic lines - open and close grapple ■ Kinematics position II for greater working depth ■ Maritime climate varnishing ■ Maritime climate coating of all cylinders, nickel-plated and chrome-plated ■ Float position of the equipment ■ Hoisting limiter / stick limitation adjustable for stop settings, e.g. in the hall ■ Multi-coupling

UNDERCARRIAGE

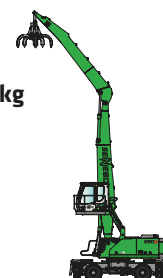
Design	Strong mobile undercarriage with integrated 4-point claw support, steering axle as hydraulically locking pendulum axle, pendulum axle cylinder with pipe fracture safety valves
Drive	All-wheel drive powered by a variable-displacement hydraulic motor with direct-mounted, automatically actuated brake valve and 2-stage power shift transmission, strong planetary axles with integrated steering cylinders, service brake in 2-circuit system
Parking brake	Spring-loaded multi-disk brake
Tires	M: solid-rubber tires 12.00-20 , 8 MHD: solid-rubber tires 12.00-20 , 8 MHDS: solid-rubber tires 16.00-25 , 8 Trailer: pneumatic tires 650/65-R25 , 4
Speed	0 - 7 km/h stage I 0 - 20 km/h stage II Trailer 25 km/h
Options	<ul style="list-style-type: none"> ■ MHD: pneumatic tires 12.00-20, 8 ■ MHDS: pneumatic tires 20.50-R25, 4 ■ Additional pushing blade for 4-point support (front or rear) ■ Individual outrigger actuation ■ Protection for travel drive/towing pintle

ELECTRIC DRIVE

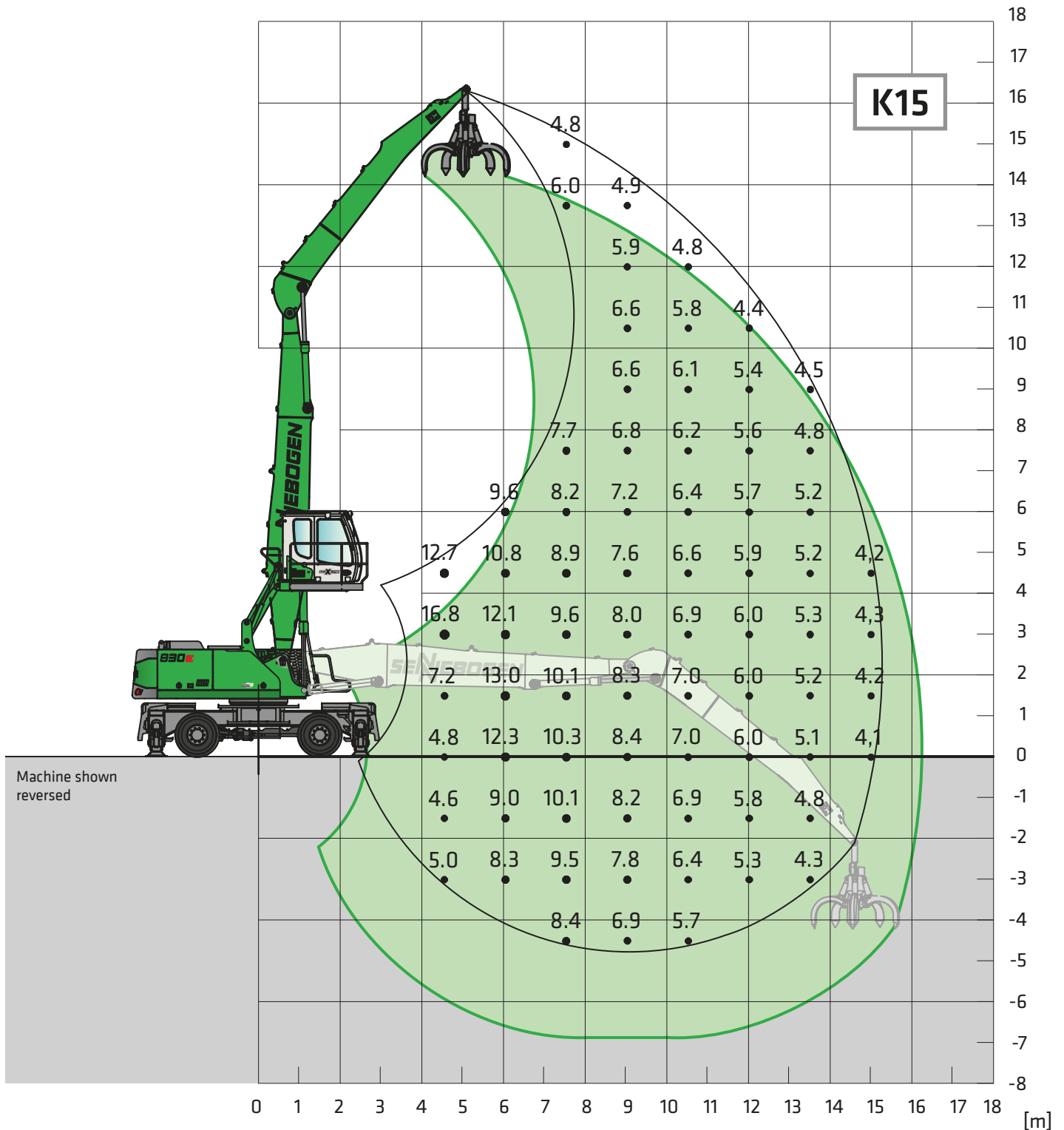
Option	<ul style="list-style-type: none"> ■ Power: 132 kW / 400 V / 50 Hz ■ Total connected load 270 kVA, customer-provided fusing 400 A at 400 V - motor start-up via star-delta circuit ■ Advantages: lowest operating costs, quiet and virtually vibration-free work, long service life of hydraulic components
--------	---

OPERATING WEIGHT

Mass	830 M with MP30E, operating equipment K17 and grapple 600 I approx. 38,500 kg 830 MHD with MP31E, operating equipment K17 and grapple 600 I approx. 40,000 kg
Notice	The operating weight varies depending on the model.



830E Load ratings



Undercarriage **MP30**

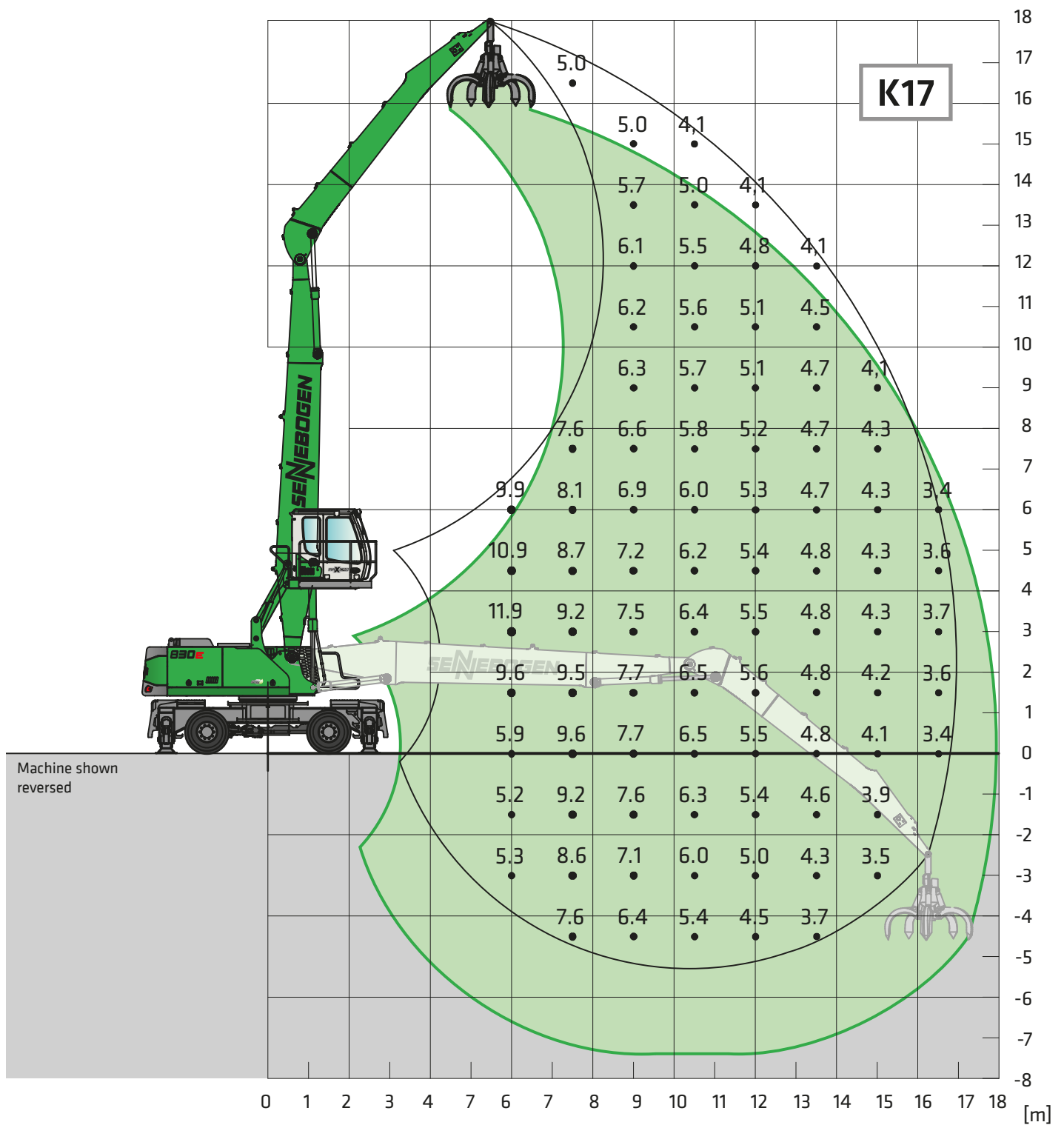
Compact boom **8.5 m**
Dipper stick **7.0 m**

Cab **Maxcab E270,**
hydraulically elevating

All load ratings are specified in tons (t) and apply at the end of the stick, without attachment, on a solid, level substrate. Attachments, such as grapple, magnet, load hook, etc. are part of the specified load ratings. The specified values are 75 % of the static tipping load or 87 % of the hydraulic lifting force in accordance with ISO 10567. In accordance with the EU standard EN 474-5, material loaders in hoist operation must be equipped with pipe fracture safety devices on hoist cylinders and an overload warning device.

The specified load ratings apply 360° on the crawler undercarriage; telescopic undercarriages must be completely extended.

830E Load ratings



Undercarriage MP30

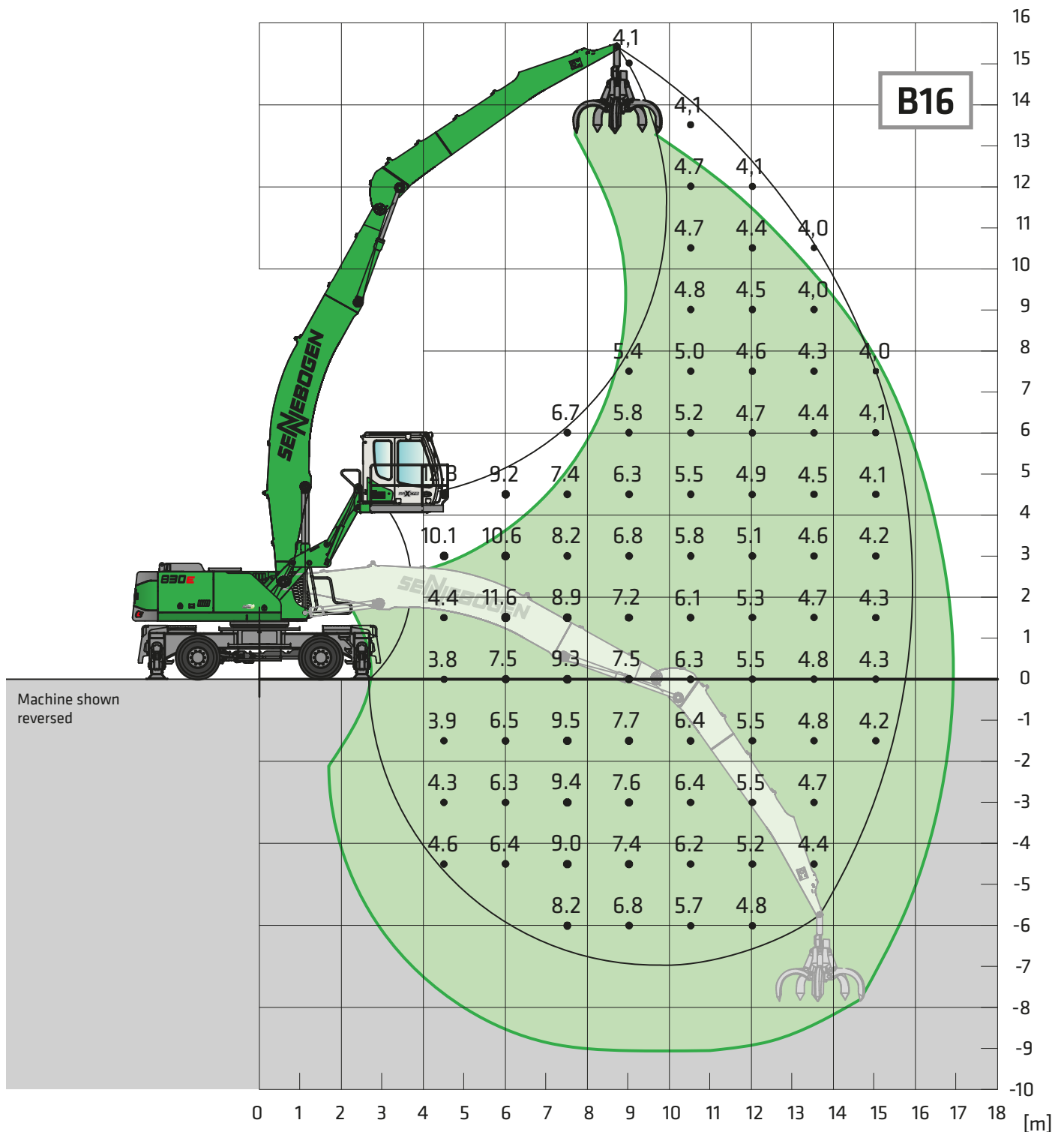
Compact boom 9.8 m
Dipper stick 7.5 m

Cab Maxcab E270, can be elevated and moved forward hydraulically

All load ratings are specified in tons (t) and apply at the end of the stick, without attachment, on a solid, level substrate. Attachments, such as grapple, magnet, load hook, etc. are part of the specified load ratings. The specified values are 75 % of the static tipping load or 87 % of the hydraulic lifting force in accordance with ISO 10567. In accordance with the EU standard EN 474-5, material loaders in hoist operation must be equipped with pipe fracture safety devices on hoist cylinders and an overload warning device.

The specified load ratings apply 360° on the crawler undercarriage; telescopic undercarriages must be completely extended.

B30E Load ratings

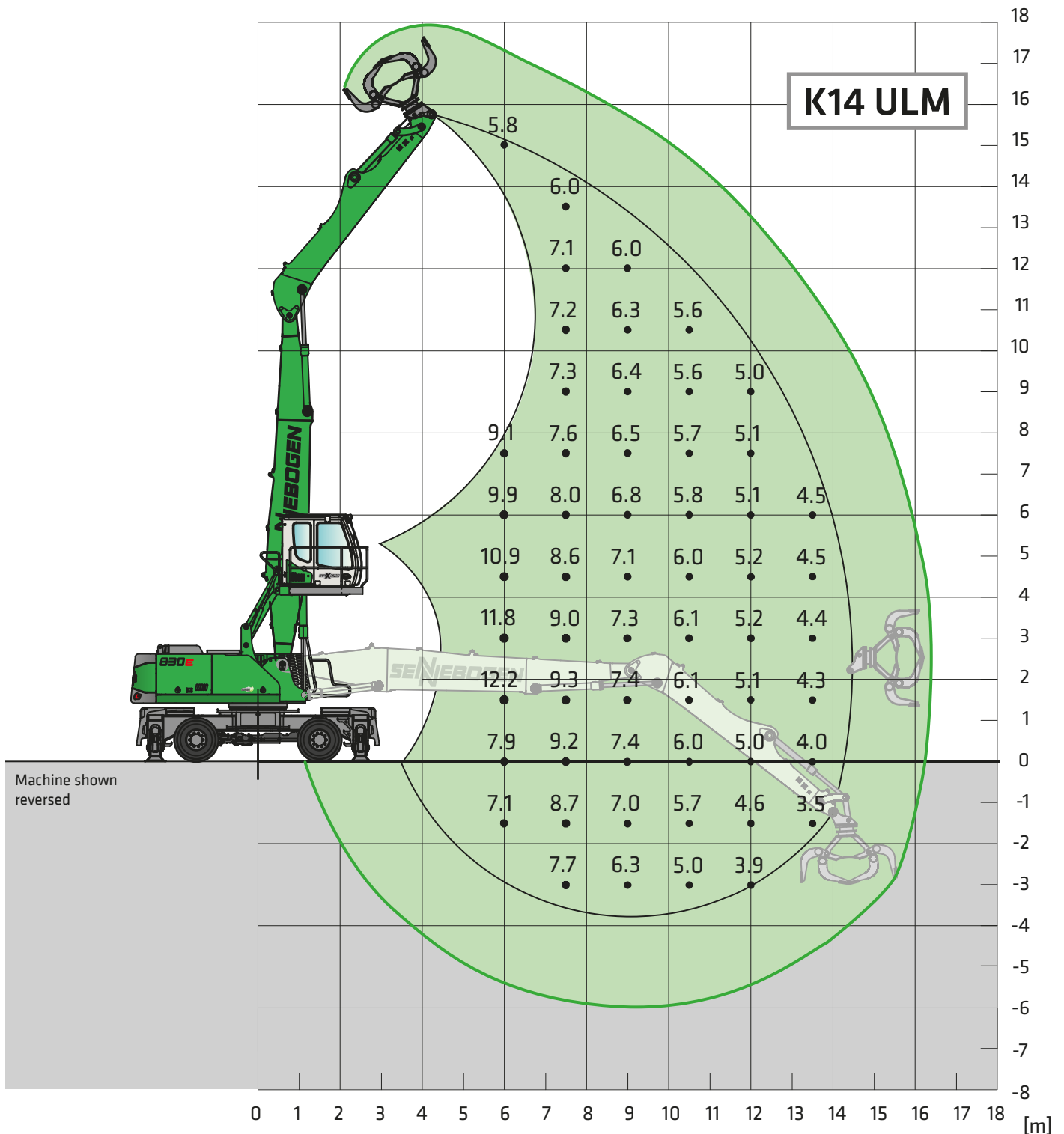


Undercarriage MP30
 Compact boom Dipper stick
 9.4 m Banana 7.0 m
 Cab Maxcab E300/260, can be elevated and moved forward hydraulically (option)

All load ratings are specified in tons (t) and apply at the end of the stick, without attachment, on a solid, level substrate. Attachments, such as grapple, magnet, load hook, etc. are part of the specified load ratings. The specified values are 75 % of the static tipping load or 87 % of the hydraulic lifting force in accordance with ISO 10567. In accordance with the EU standard EN 474-5, material loaders in hoist operation must be equipped with pipe fracture safety devices on hoist cylinders and an overload warning device.

The specified load ratings apply 360° on the crawler undercarriage; telescopic undercarriages must be completely extended.

830E Load ratings



Undercarriage MP30

**Compact boom
Dipperstick**

**8.5 m
6.0 m ULM**

Cab

**Maxcab E270,
hydraulically elevating**

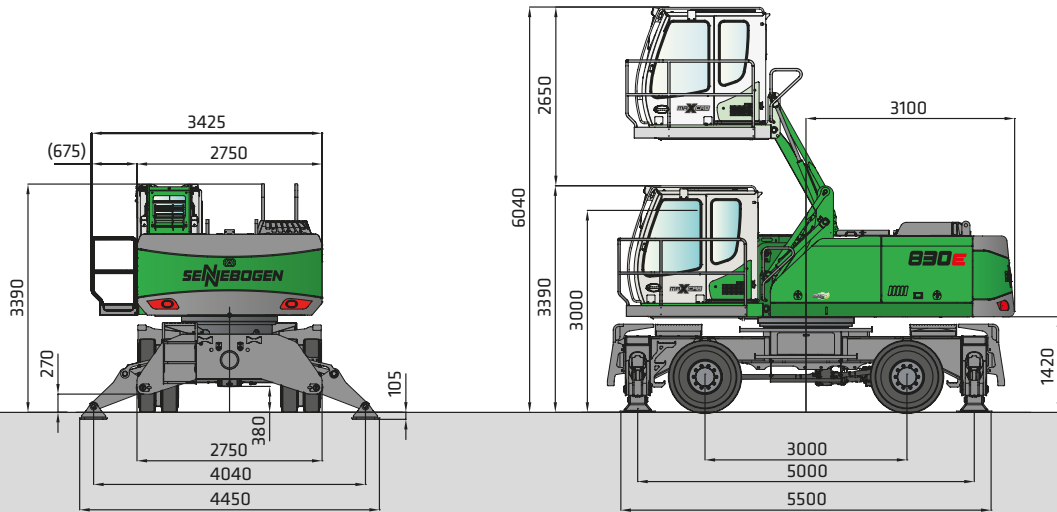
All load ratings are specified in tons (t) and apply at the end of the stick, without attachment, on a solid, level substrate. Attachments, such as grapple, magnet, load hook, etc. are part of the specified load ratings. The specified values are 75 % of the static tipping load or 87 % of the hydraulic lifting force in accordance with ISO 10567. In accordance with the EU standard EN 474-5, material loaders in hoist operation must be equipped with pipe fracture safety devices on hoist cylinders and an overload warning device.

The specified load ratings apply 360° on the crawler undercarriage; telescopic undercarriages must be completely extended.

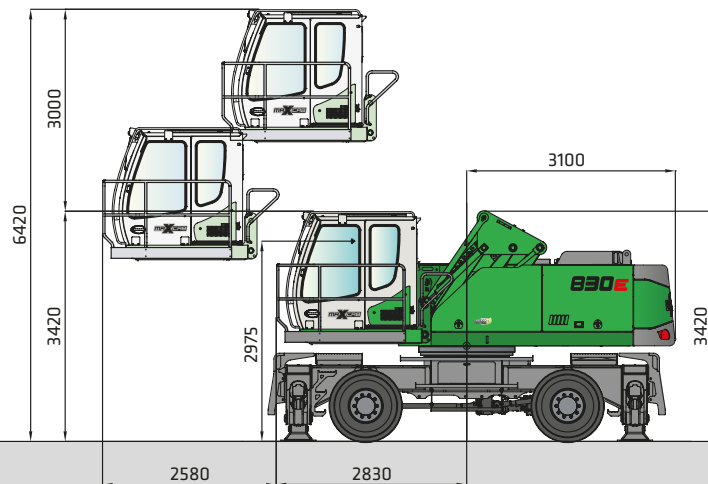
830E Dimensions

Transport width 2750 mm

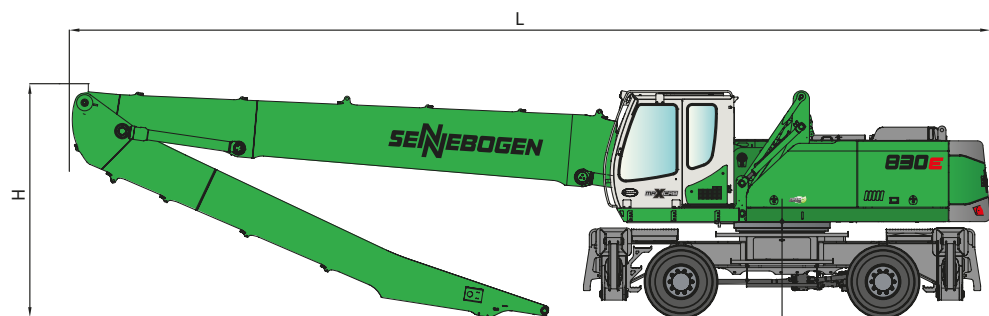
Solid-rubber tires 12.00-20, 8



830 M with undercarriage type MP30E (series) and hydraulically elevating cab type E270

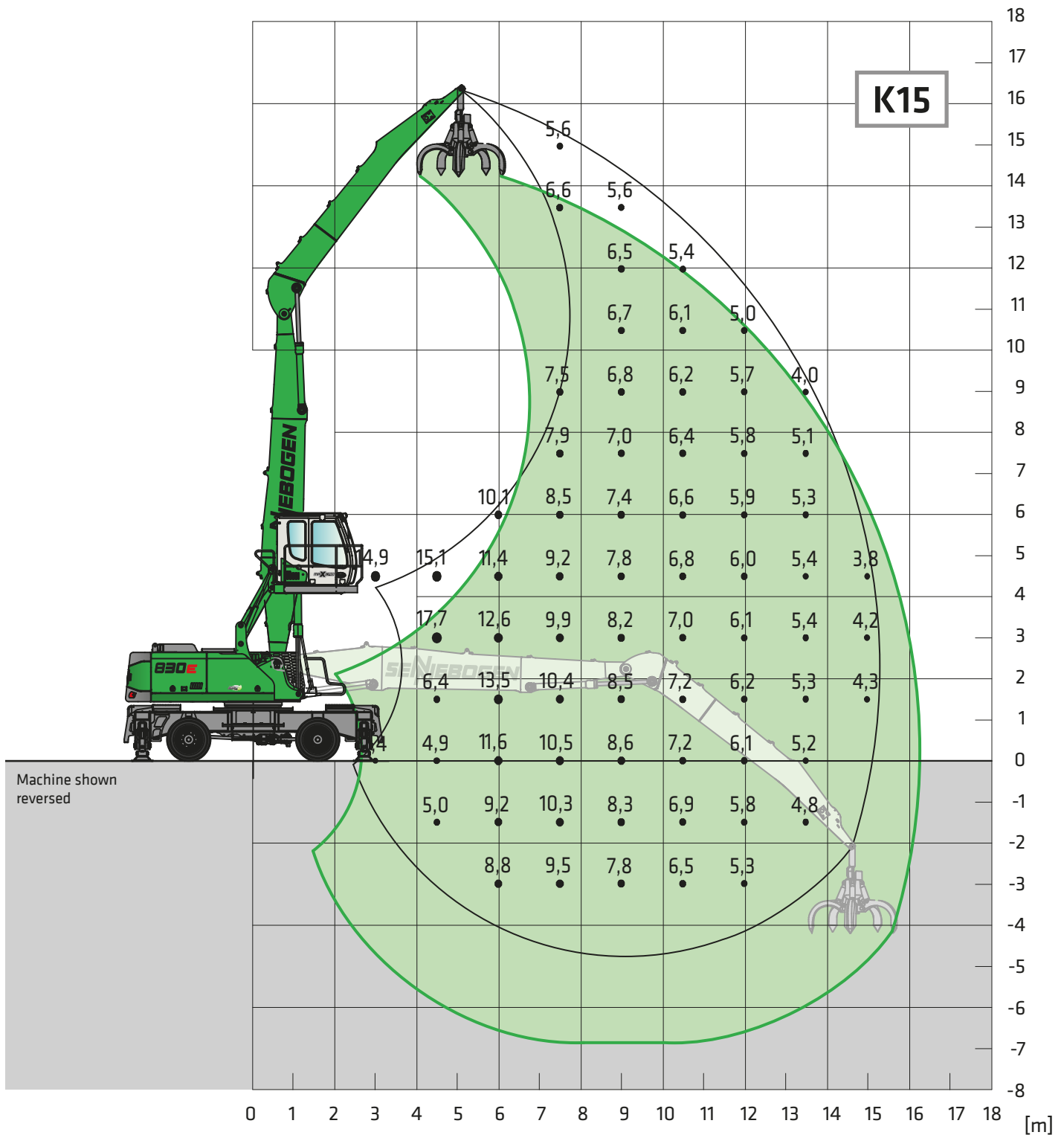


830 M with cab type E300/260 (option), can be elevated and moved forward hydraulically



830 M with undercarriage type MP30E

	Load boom	Grapple stick	Transport length (L)	Transport height (H)
K15	8.5 m	7.0 m	12.45 m	3.40 m
K17	9.8 m	7.5 m	13.75 m	3.45 m
B16	9.4 m Banana	7.0 m	13.40 m	3.50 m
K14 ULM	8.5 m	6.0 m	12.45 m	3.40 m



Undercarriage MP31

**Compact boom 8.5 m
Dipper stick 7.0 m**

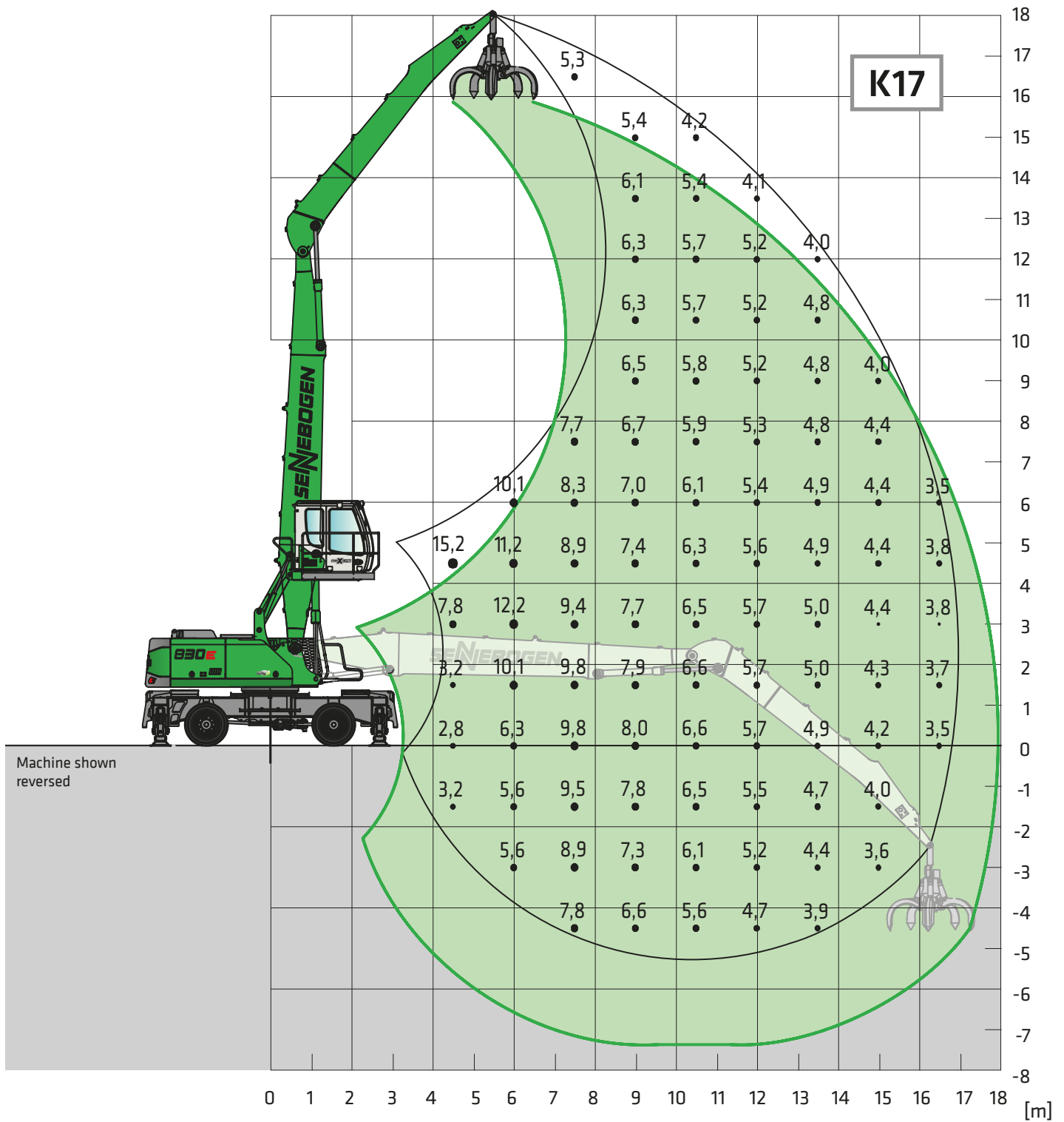
**Cab Maxcab E270,
hydraulically elevating**

All load ratings are specified in tons (t) and apply at the end of the stick, without attachment, on a solid, level substrate. Attachments, such as grapple, magnet, load hook, etc. are part of the specified load ratings. The specified values are 75 % of the static tipping load or 87 % of the hydraulic lifting force in accordance with ISO 10567. In accordance with the EU standard EN 474-5, material loaders in hoist operation must be equipped with pipe fracture safety devices on hoist cylinders and an overload warning device.

The specified load ratings apply 360° on the crawler undercarriage; telescopic undercarriages must be completely extended.

830E Load ratings

MHD / MHDS



Undercarriage **MP31**

Compact boom **9.8 m**
Dipper stick **7.5 m**

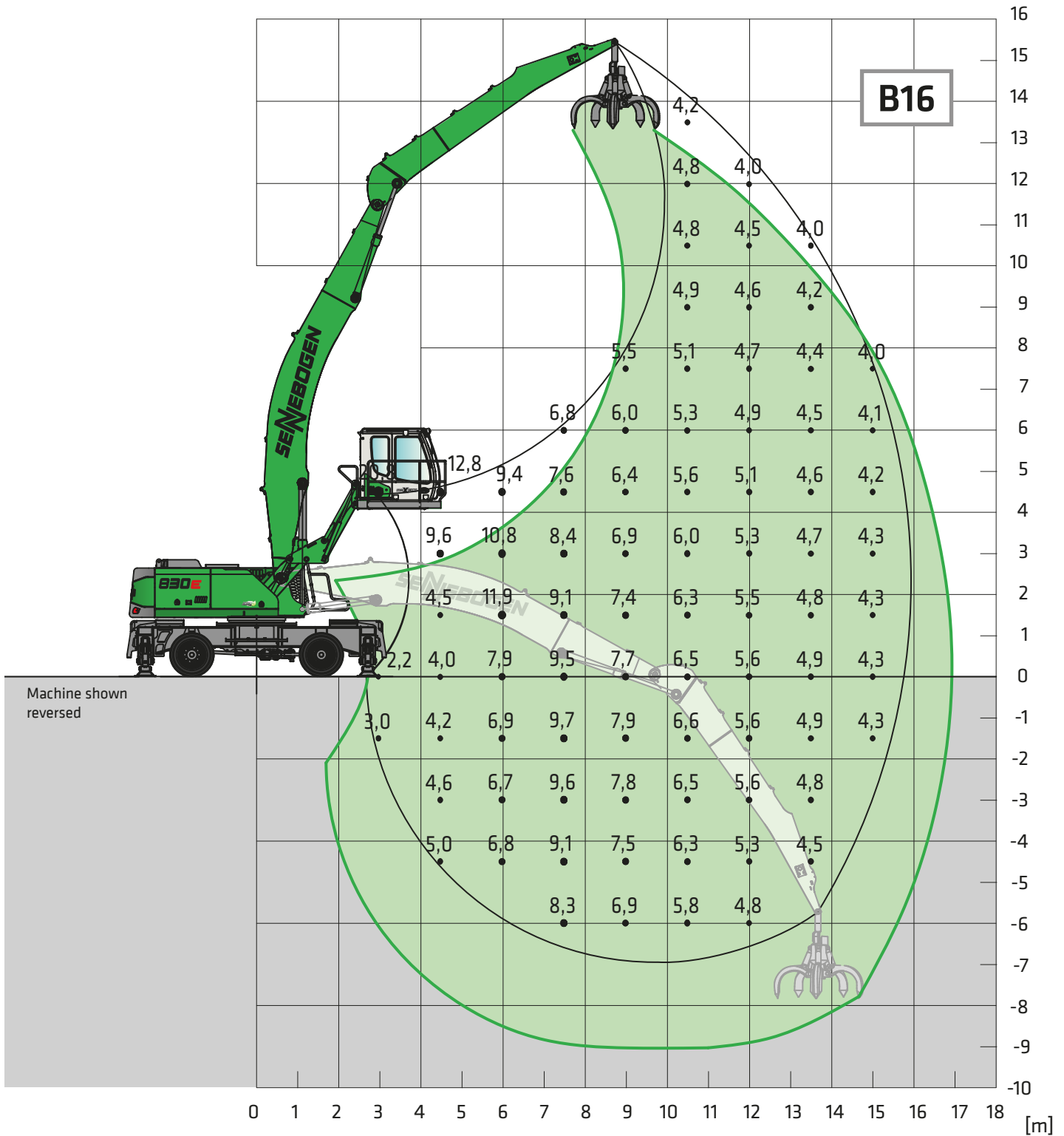
Cab **Maxcab E270, hydraulically elevating**

All load ratings are specified in tons (t) and apply at the end of the stick, without attachment, on a solid, level substrate. Attachments, such as grapple, magnet, load hook, etc. are part of the specified load ratings. The specified values are 75 % of the static tipping load or 87 % of the hydraulic lifting force in accordance with ISO 10567. In accordance with the EU standard EN 474-5, material loaders in hoist operation must be equipped with pipe fracture safety devices on hoist cylinders and an overload warning device.

The specified load ratings apply 360° on the crawler undercarriage; telescopic undercarriages must be completely extended.

830E Load ratings

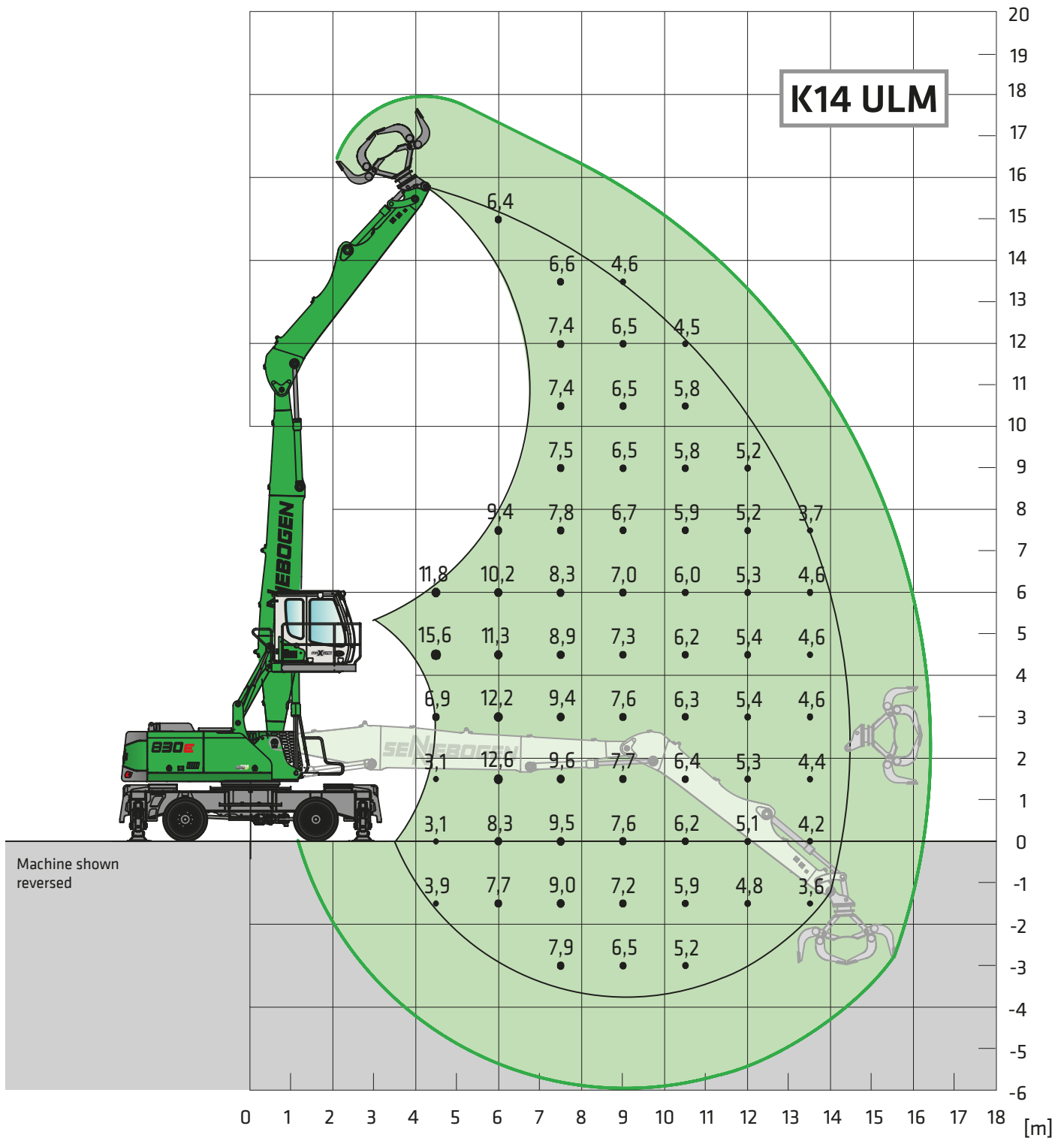
MHD / MHDS



Undercarriage MP31	Compact boom 9.4 m Banana Dipper stick	Cab Maxcab E300/260, can be elevated and moved forward hydraulically (option)
---------------------------	---	--

All load ratings are specified in tons (t) and apply at the end of the stick, without attachment, on a solid, level substrate. Attachments, such as grapple, magnet, load hook, etc. are part of the specified load ratings. The specified values are 75 % of the static tipping load or 87 % of the hydraulic lifting force in accordance with ISO 10567. In accordance with the EU standard EN 474-5, material loaders in hoist operation must be equipped with pipe fracture safety devices on hoist cylinders and an overload warning device.

The specified load ratings apply 360° on the crawler undercarriage; telescopic undercarriages must be completely extended.



Machine shown reversed

Undercarriage MP31

**Compact boom 8.5 m
Dipper stick 6.0 m ULM**

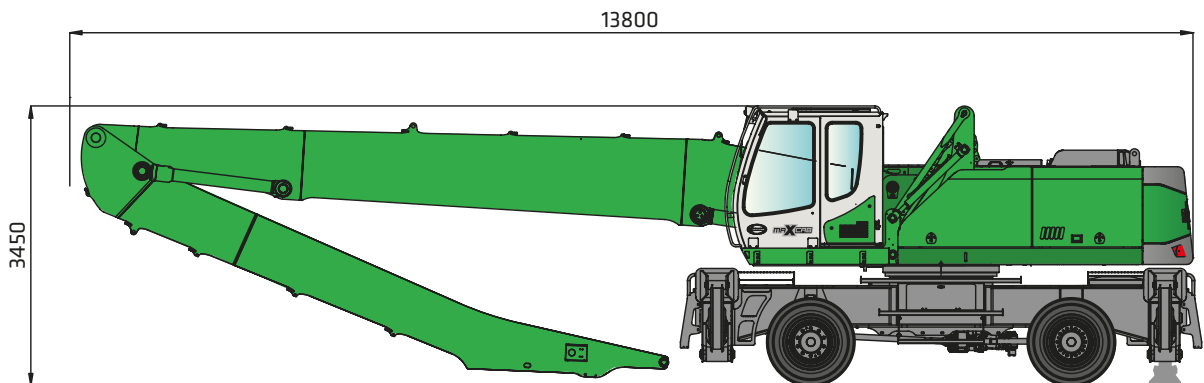
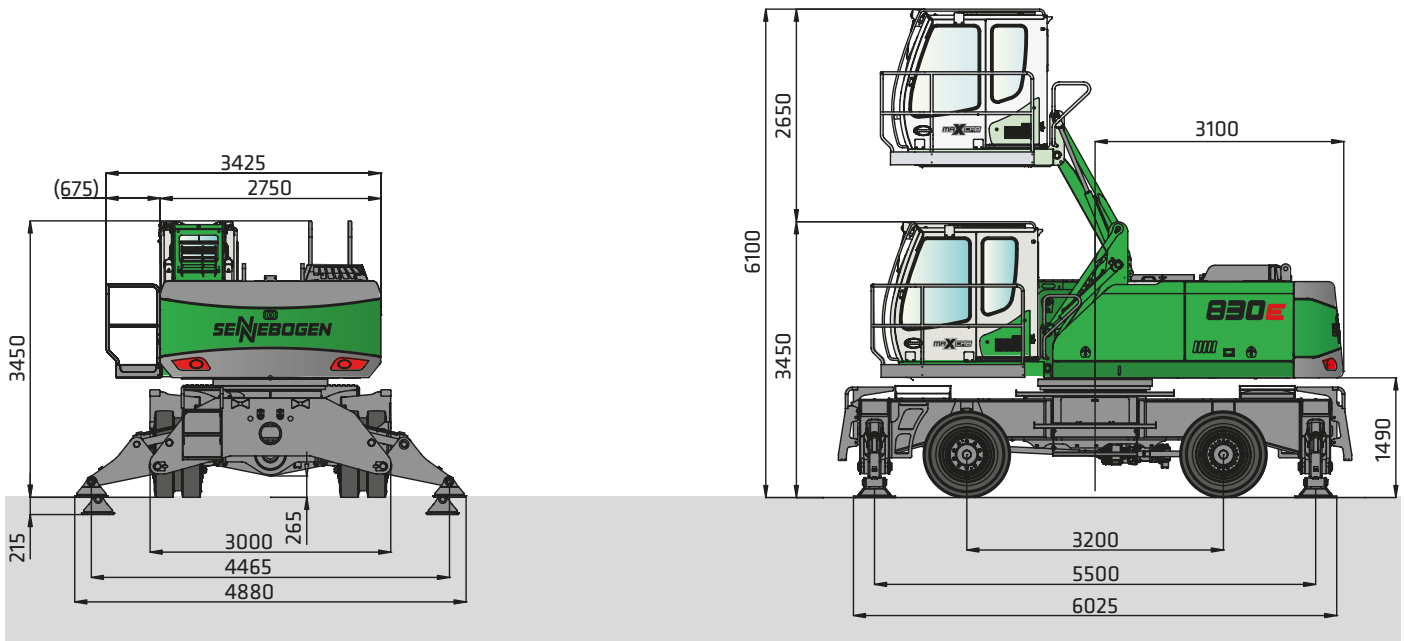
**Cab Maxcab E270,
hydraulically elevating**

All load ratings are specified in tons (t) and apply at the end of the stick, without attachment, on a solid, level substrate. Attachments, such as grapple, magnet, load hook, etc. are part of the specified load ratings. The specified values are 75 % of the static tipping load or 87 % of the hydraulic lifting force in accordance with ISO 10567. In accordance with the EU standard EN 474-5, material loaders in hoist operation must be equipped with pipe fracture safety devices on hoist cylinders and an overload warning device.

The specified load ratings apply 360° on the crawler undercarriage; telescopic undercarriages must be completely extended.

Transport width 3000 mm

Solid-rubber tires 12.00-20, 8

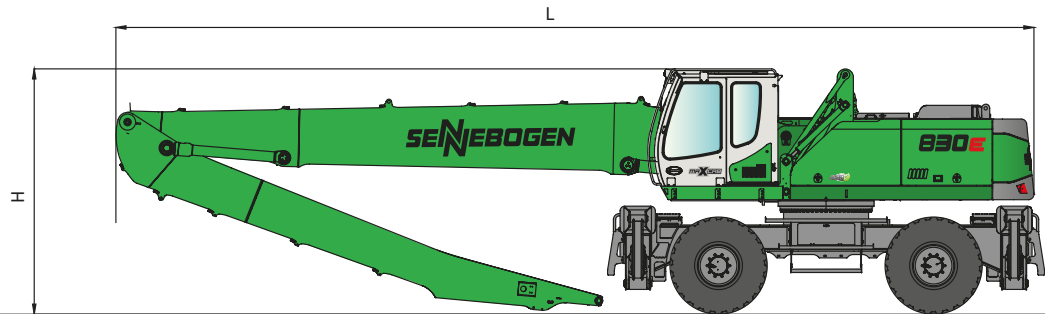
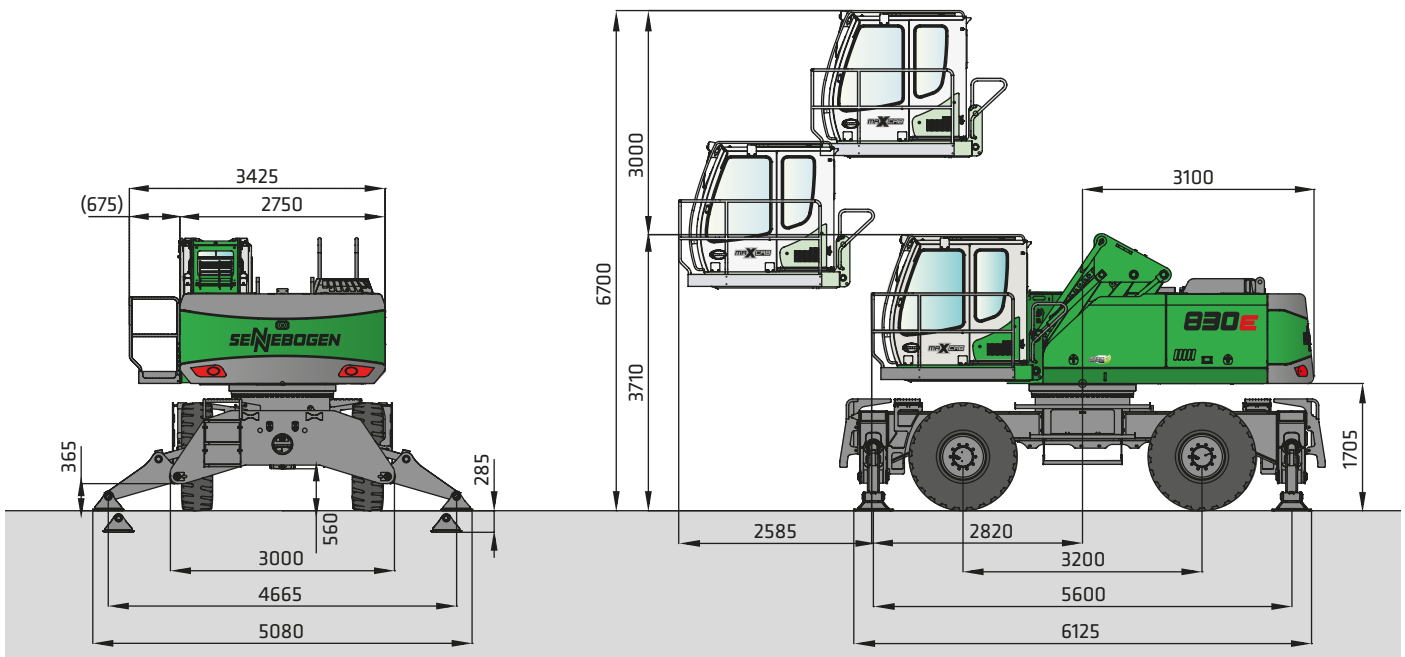


830 MHD with undercarriage type MP31E, hydraulically elevating Maxcab type E270, tires 12.00 - 20, 8, transport width 3000 mm, working weight with boom K17, 600 l multi-shell grab, approx. 40,000 kg

	Load boom	Grapple stick	Transport length (L)	Transport height (H)
K15	8.5 m	7.0 m	12.5 m	3.4 m
K17	9.8 m	7.5 m	13.8 m	3.4 m
B16	9.4 m	7.0 m	13.4 m	3.5 m
K14 ULM	8.5 m	6.0 m	12.5 m	3.4 m

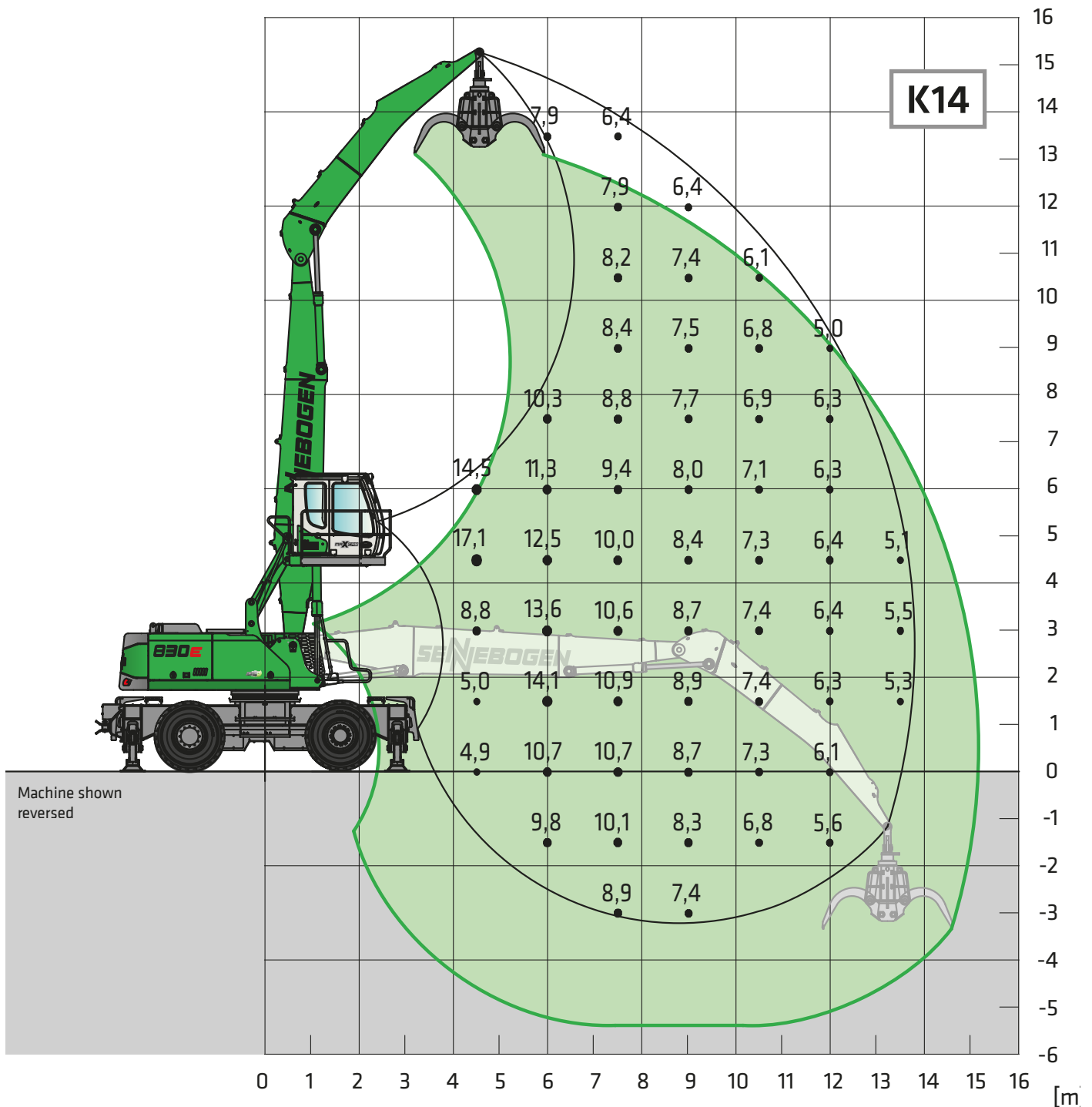
Transport width 3000 mm

Solid-rubber tires 16.00-25, 8



830 MHD with undercarriage type MP34, Maxcab can be elevated and moved forward hydraulically, tires 16.00 - 25, 4, transport width 3000 mm, working weight with boom K17, 600 l multi-shell grab, approx. 41,000 kg

	Load boom	Grapple stick	Transport length (L)	Transport height (H)
K15	8.5 m	7.0 m	12.5 m	3.7 m
K17	9.8 m	7.5 m	13.8 m	3.7 m
B16	9.4 m	7.0 m	13.4 m	3.8 m
K14 ULM	8.5 m	6.0 m	12.5 m	3.7 m



Undercarriage MP38

**Compact boom
Dipper stick**

**8.2 m
5.8 m**

Cab

**Maxcab E270,
hydraulically elevating**

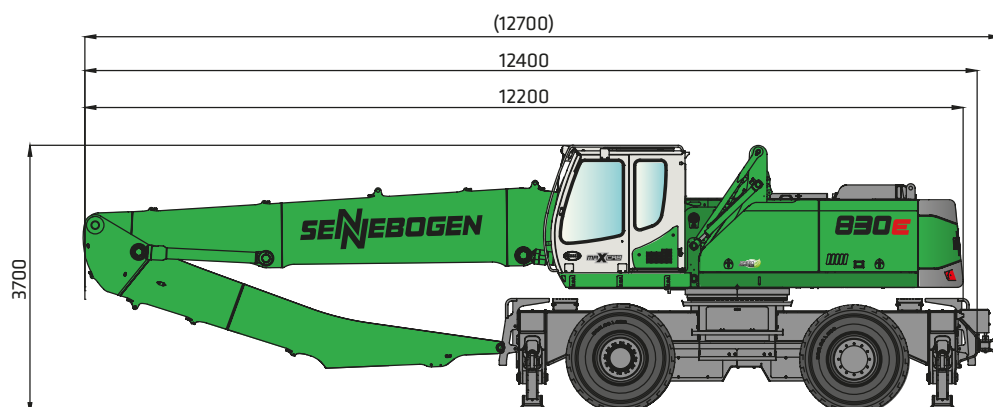
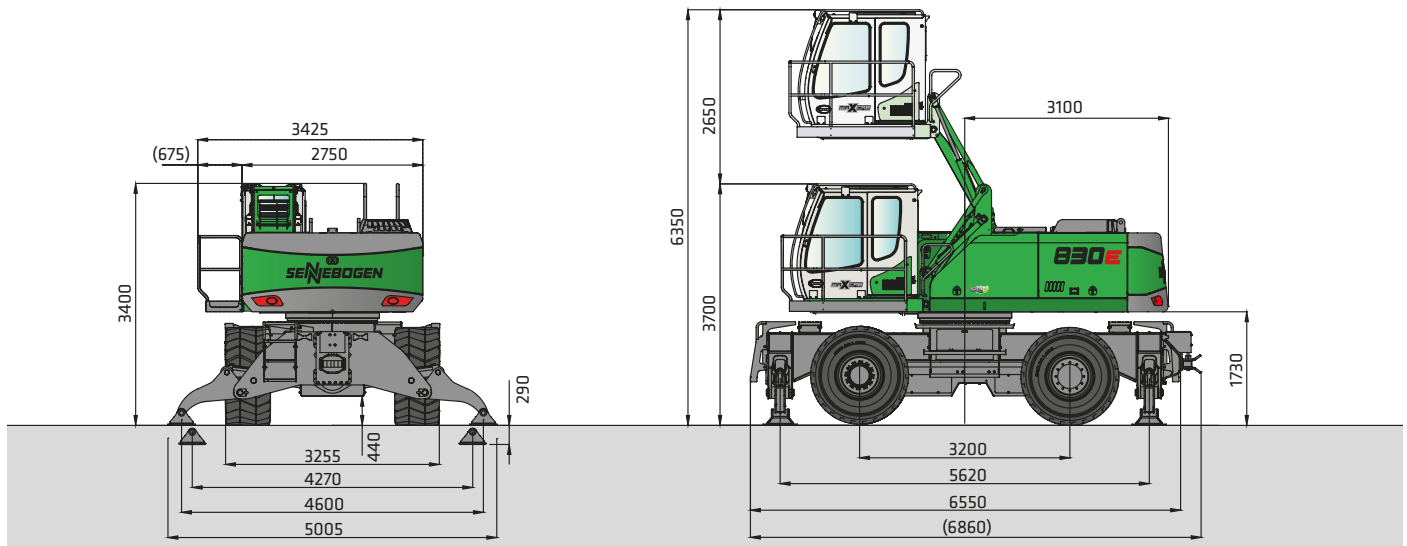
All load ratings are specified in tons (t) and apply at the end of the stick, without attachment, on a solid, level substrate. Attachments, such as grapple, magnet, load hook, etc. are part of the specified load ratings. The specified values are 75 % of the static tipping load or 87 % of the hydraulic lifting force in accordance with ISO 10567. In accordance with the EU standard EN 474-5, material loaders in hoist operation must be equipped with pipe fracture safety devices on hoist cylinders and an overload warning device.

The specified load ratings apply 360° on the crawler undercarriage; telescopic undercarriages must be completely extended.

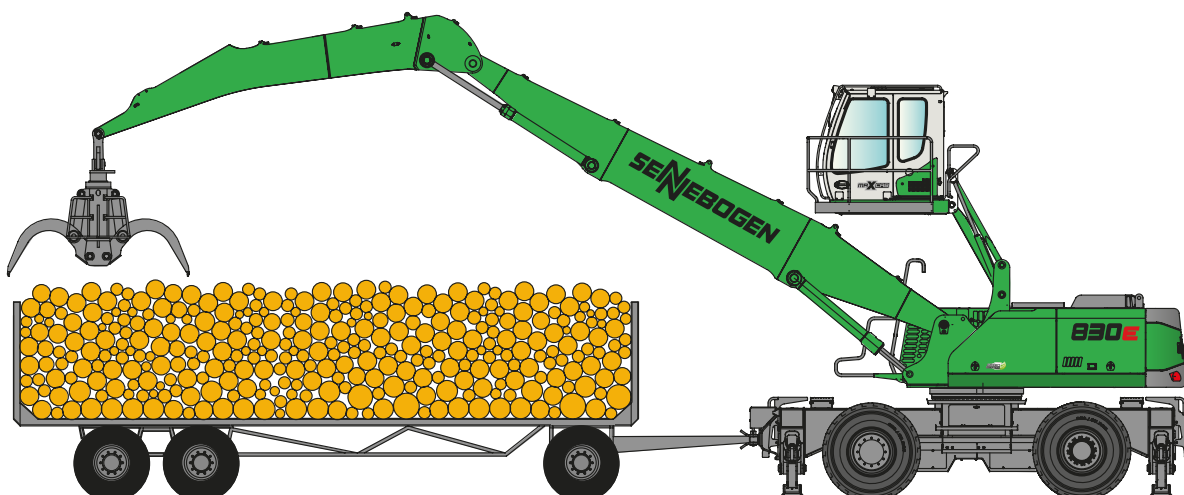
Transport width 3255 mm

Solid-rubber tires 650/65-R25, 4

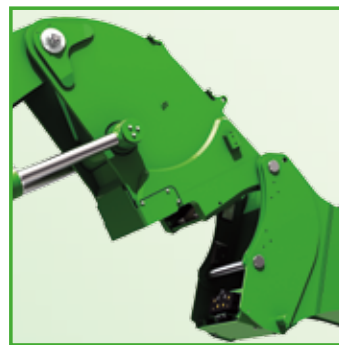
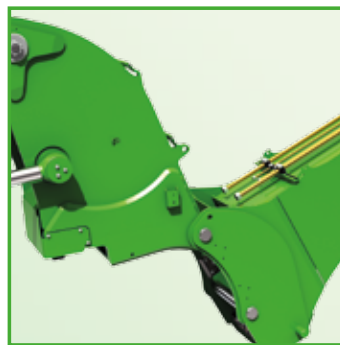
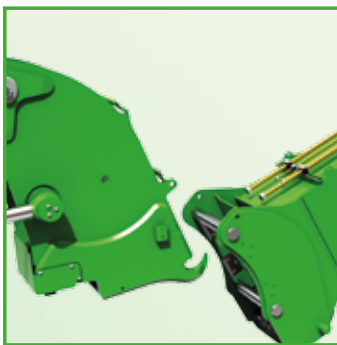
Extremely high pulling force for pulling heavy trailers



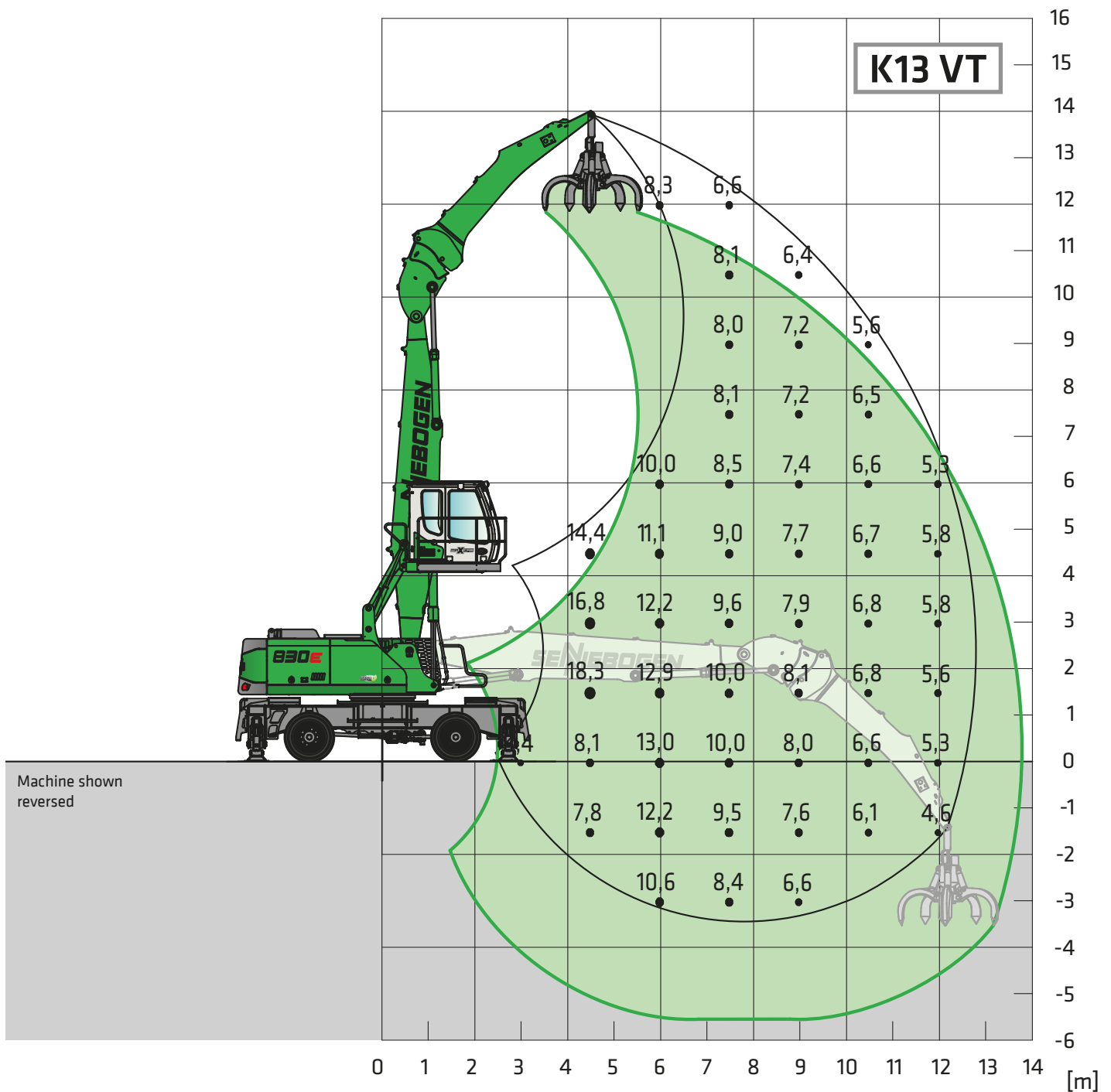
830 trailer, operating weight with boom K14, 1.5 sqm log grapple, approx. 43,500 kg



From a high-performance handling machine to a multi-functional high-performance tool carrier



- Stick / shear can be supported without support frame
- Automatic valve protection in coupled and decoupled state
- Effective change of the attachment: simple - fast - reliable
- Full power with:
 - Multi-shell grab
 - Shear
 - Magnet
 - Sorting grab
- Fast and reliable changing of the attachment in seconds from the driver seat
- One basic system for different attachments
- Robust and intelligently simple
- Locking and changing the attachments without exiting
- Maximum versatility
- The material handling machine as a tool carrier
- The "VarioTool" quick changing system for material handling changes attachments fast and reliably



Undercarriage MP31

**Compact boom
Dipper stick**

**7.2 m
5.7 m**

Cab

**Maxcab E270,
hydraulically elevating**

All load ratings are specified in tons (t) and apply at the end of the stick, without attachment, on a solid, level substrate. Attachments, such as grapple, magnet, load hook, etc. are part of the specified load ratings. The specified values are 75 % of the static tipping load or 87 % of the hydraulic lifting force in accordance with ISO 10567. In accordance with the EU standard EN 474-5, material loaders in hoist operation must be equipped with pipe fracture safety devices on hoist cylinders and an overload warning device.

The specified load ratings apply 360° on the crawler undercarriage; telescopic undercarriages must be completely extended.

830E Recommended grapples

Multi-shell grab SGM (4 shells)



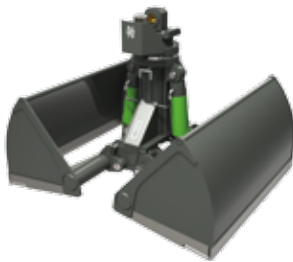
Design / size	Grapple capacity	Weight ¹		Maximum load capacity
		Shell form		
		HO	G	
SGM	l	kg	kg	t
400.40-4	400	1570	1720	8.0
600.40-4	600	1600	1790	
800.40-4	800	1685	1930	
1000.40-4	1000	1755	2085	
1250.40-4	1250	1850	2200	

Multi-shell grab SGM (5 shells)



Design / size	Grapple capacity	Weight ¹		Maximum load capacity
		Shell shape ²		
		HO	G	
SGM	l	kg	kg	t
400.40	400	1820	1920	8.0
600.40	600	1910	2035	
800.40	800	1960	2140	
1000.40	1000	2040	2290	
1250.40	1250	2180	2415	
1400.40	1400	2250	2500	

SGZ double shell grab



Design / size	Grapple capacity	Weight ¹	Maximum load capacity
SGZ	l	kg	t
1000.40	1000	1270	4.0
1200.40	1200	1360	
1400.40	1400	1420	
1600.40	1600	1530	
1500.50	1500	1950	8.0
2000.50	2000	2200	
2500.50	2500	2300	
3000.50	3000	2490	
4000.50	4000	2880	
3000.50 L	3000	2140	8.0
3500.50 L	3500	2260	
4000.50 L	4000	2480	
4500.50 L	4500	2600	
1500.50 HD	1500	2240	8.0
2000.50 HD	2000	2535	

Magnetic plates



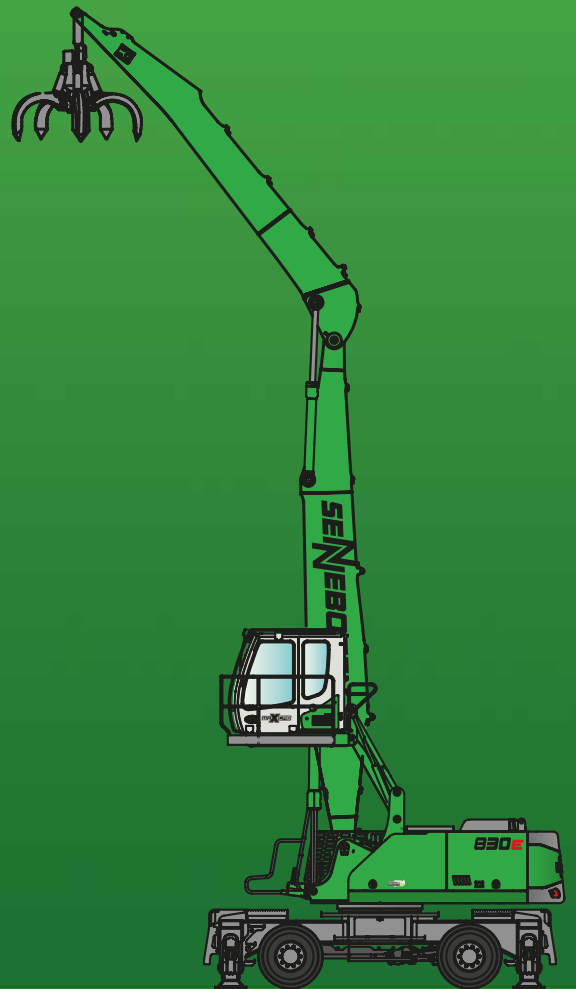
Type series / model	Power	Deadweight	Breakaway force	Load-bearing capacity in kg
WOKO	kW	kg	kN	Slab (safety factor 2)
S-RSL 13	10.5	1300	260	1300
S-RSL 15	12.2	1950	360	1800
S-RLB 12.5	8.8	1310	280	14000
S-RLB 13.5	10.0	1700	300	15000
S-RLB 15	11.7	2400	380	19000
Recommended magnetic generator: 15 kW/20 kW				

^{*)} Available upon request ¹⁾ Weight information without grapple suspension, stick bolts, hose system

²⁾ Half-open shells: shell sheet steel width 400 mm, 500 mm for 1250 l capacity and higher

830E

M | MHD | MHDS | TRAILER



This catalog describes machine models, scopes of equipment of individual models, and configuration options (standard equipment and optional equipment) of the machines delivered by SENNEBOGEN Maschinenfabrik. Machine illustrations can contain optional equipment and supplemental equipment. Actual equipment may vary depending on the country to which the machines are delivered, especially in regard to standard and optional equipment.

All product designations used may be trademarks of SENNEBOGEN Maschinenfabrik GmbH or other supplying companies, and any use by third parties for their own purposes may violate the rights of the owners.

Please contact your local SENNEBOGEN sales partner for information concerning the equipment variants offered. Requested performance characteristics are only binding if they are expressly stipulated upon conclusion of the contract. Delivery options and technical features are subject to change. Errors and omissions excepted. Equipment is subject to change, and rights of advancement are reserved.

© SENNEBOGEN Maschinenfabrik GmbH, Straubing, Germany. Reproduction in whole or in part only with written consent of SENNEBOGEN Maschinenfabrik GmbH, Straubing, Germany.

SENNEBOGEN

SENNEBOGEN
Maschinenfabrik GmbH
Sennebogenstrasse 10
94315 Straubing, Germany

Tel. +49 9421 540-144/146
Fax +49 942143 8-82
marketing@sennebogen.de

Order no. / Item no. 179552
830M-E-121515-101615

GO FOR GREEN

 www.sennebogen.com