

Technical Specifications

SENNEBOGEN Rubber Tired Material Handler



Leading Through Innovation

Engine
Model Cummins QSL9, Tier 4 Final
Net Power 305 HP (224 kW)

Operating Weight
M/rubber tired 116,845 lb (53,000 kg)

Reach
standard 56'6" (17.23 m) (stick pin)
optional 62'8" (19.11 m) (stick pin)

Magnet System
rating 25 kW

840E_M

SENNEBOGEN

Technical Specifications 840 M “E”

ENGINE	
model	Cummins QSL9-C300
type	in-line, 6 cylinder, cooled exhaust gas recirculation, water cooled
emission	EPA Tier 4 Final
net power	305 HP (224 kW) @ 2,000 rpm
injection	high pressure common-rail
displacement	8.9 L (543 cu.in.)
bore	4.49 in (114 mm)
stroke	4.69 in (145 mm)
aspiration	turbo charged, charge air cooled
fuel tank	165 gal (625L)
air filtration	direct flow filtration system dual stage filter with pre-filter
control	integrated ECM automatic idle - stop automatic eco mode
ELECTRICAL	
alternator	24 V, 100 Amp
starter	24 V, 7.8 kW
battery	2 x 12 V, 150 Ah
lights	2 x cab roof, type halogen 2 x frame upper carriage, type H4
HYDRAULIC SYSTEM	
system type	loading sensing pilot pressure controlled open center
pump type	variable-displacement axial-piston pump
max. pump flow	196 gpm (740 l / m)
max. pressure	5,076 psi (350 bar)
hydraulic tank	132 gal (500 L)
hydraulic system	180 gal (680 L)
filtration	dual filtration system 3 micron (HydroClean)
COOLING	
cooling type	cool-on-demand, suction-type fan system, side by side
hydraulic / water	hydraulic fan drive axial piston pump, reversible fan thermo-statically controlled, closed loop system
charge air	direct fan drive
WEIGHT	
operating weight	116,845 lb (53,000 kg)

SWING SYSTEM	
swing speed	0 - 8 rpm
swing hydraulic	open loop
drive	2 x axial piston motor driving planetary gearbox, integrated brake valves
swing brake	multidisc brake, spring loaded
swing bearing	external teeth, sealed ball bearing
TRAVEL / UNDERCARRIAGE	
type	rubber tired MP42-E
drive system	all-wheel drive 2 variable displacement motors direct mounted on each axle
travel speed	1 st 0-6.8 mph (0-11.0 km/h)
tires	8 x 14.00-24 (solid rubber)
steering	joystick steering
front axle	oscillating with hydraulic lock, integrated safety check valves
rear axle	fixed
service brake	disc brake
parking brake	wet, multi disc brake, spring loaded
safety	travel alarm
REFILL CAPACITIES	
fuel tank	165 gal (625 L)
engine cooling system	15.85 gal (60 L)
engine oil w / filter	7.53 gal (28.5 L)
hydraulic tank	132 gal (500 L)
hydraulic system	180 gal (680 L)
swing box	1.45 gal (5.5 L)
axle hub (front axle)	1.24 gal (4.7 L) each
axle hub (rear axle)	1.24 gal (4.7 L) each
axle differential (front axle)	11.76 gal (44.5 L)
axle differential (rear axle)	10.65 gal (40.3 L)
axle drop box (front axle)	0.4 gal (1.5 L)
axle drop box (rear axle)	0.4 gal (1.5 L)
parking brake	0.16 gal (0.6 L)
swing ring lubrication reservoir	0.26 gal (1.0 L)
central lubrication reservoir	5.5 lb (2.5 kg)
diesel exhaust fluid	7.93 gal (30 L)
MAGNET SYSTEM	
rating	25 kW
voltage (magnetized)	230 V
current (cold condition)	109 Amps
controller	Hubbell
generator	Baldor
drive	hydraulic

Subject to technical modification.

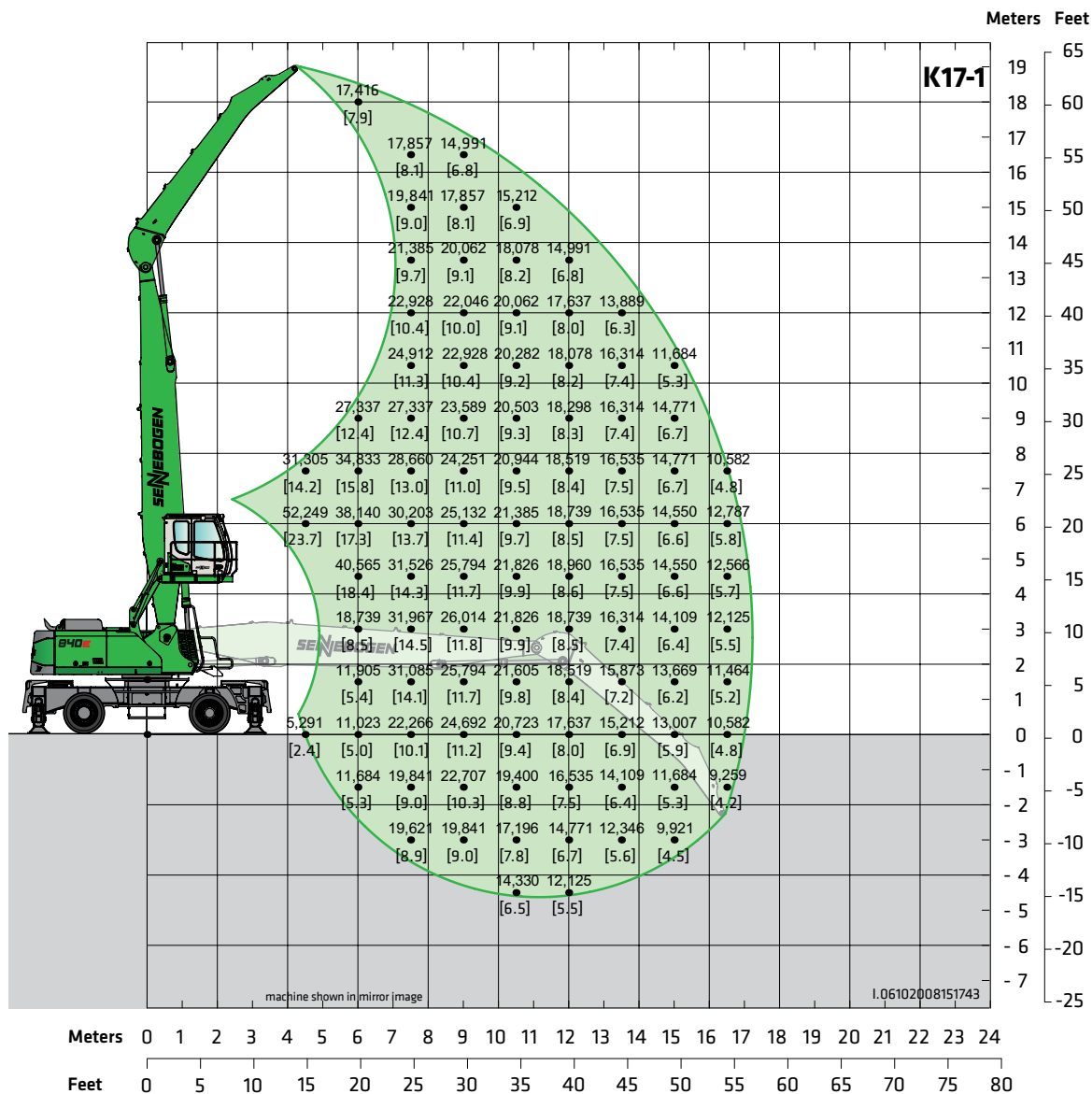
Standard / Optional Equipment 840 M “E”

ENGINE	
Water separator in fuel line	●
Automatic idle / engine stop control	●
Eco mode	●
Visual fuel tank check	●
Engine block & water separator pre-heater	○
ELECTRIC	
Battery disconnect switch	●
Centralized fuse box	●
Battery jump start connection from ground level	●
HYDRAULIC	
Pilot pressure controlled variable displacement pump	●
Thermostatically controlled cooling system	●
Centralized hydraulic test ports	●
Protection covers for pilot pressure control valves	●
3 micron dual filtration system	●
Load sensing, flow on demand hydraulic system	●
Optimized hydraulic pump regulation (GLR)	●
Visual hydraulic tank check from ground level	●
Attachments open, close & rotation hydraulics	●
Hydraulic tank shut off valve	●
Electrical hydraulic tank pre-heater	○
Biodegradable hydraulic oil	○
Hydraulic circuit for scrap shear	○
Hydraulic circuit for hammer, breaker	○
Hydraulic circuit for circuit slasher	○
Additional hydraulic circuits	○
Attachment return filtration filters (60 µm)	○
UPPER CARRIAGE	
Rearview & right side view camera system	●
Automatic lubrication system	●
Anti-slip mats on walking area	●
Lockable side doors	●
Handrails on top of upper carriage	●
Mirror left side	●
Turning signal lights in upper carriage frame	●
Removable belly panels	●
Additional light package	○
Custom colors	○
Seawater paint coating	○
SWING SYSTEM	
360° protection cover, removable	●
Electrical driven swing gear pinion lubrication pump	●
OPERATOR'S CAB (maXCab)	
Hydraulic elevating cab system E260	●
Multi adjustable, air suspended operator's seat	●
3" (76 mm) seat belt	●
Seat heater	●
Automatic climate control (heater / AC)	●
Air outlets w / defroster	●
Storage area for lunch box	●
Large cup holder	●
Fire extinguisher	●
Tinted windows with safety glass	●
Door window as sliding window	●
AM / FM Radio with CD player & speakers	●
Removable floor mat	●
SenCon diagnostic system	●
Multicolor Monitor	●
Tilt out front window	●
Halogen light package on cab roof	●
Mechanical hour meter	●
Sliding door	●
Catwalk w / handrail	●
12 V / 24 V power outlet	●
Windshield wiper and washers	●
OPERATOR'S CAB (maXCab)	
Emergency exit hammer	●
Safety lever	●
Sun shades	●
Interior lighting	●
Rain cover front window	●
Outside mirror	●
Optical and acoustic warning system	●
Positive filtered ventilation (pressurized cab)	●
Safety check valves for elevating cab cylinder	●
Foot rest	●
maXCab industry	●
Windshield protection guard	○
Skylight protection guard	○
Skylight FOPS protection guard	○
Bullet proof windshield	○
Bullet proof skylight	○
Polycarbonate side windows	○
Additional light package	○
Fixed cab elevation	○
Hydraulic elevating up and out cab E300/260	○
Operator's cab with floor window	○
Steering column instead of joystick steering	○
Steering column in combination with joystick steering	○
Additional cameras	○
UNDERCARRIAGE	
Robust designed material handling undercarriage	●
Heavy duty axles	●
Solid rubber tires 14.00-24 (8x) incl. intermediate ring	●
Front axle automatic oscillating w/axle unlock (travel position)	●
Strong hydraulic motors, direct mounted to each axle	●
Drive train protection guards	●
Travel alarm	●
Centralized lubrication points	●
2 circuit servo brake system	●
4-point outriggers w/integrated safety check valves in outrigger cylinders	●
Tool and storage compartments, lockable	●
Individual outrigger control	●
Increased size outrigger pads to decrease ground pressure	○
WORKING EQUIPMENT	
Purpose built material handling boom	●
Purpose built material handling stick	●
Attachment hydraulic line connections with ball valves	●
Boom position 1	●
Safety check valves for stick cylinders	●
Safety check valves for boom cylinders	●
Cylinder end position dumping	●
Boom hoist limitation	●
Bronze bushings connected to automatic lubrication system	●
Stick & boom limitation	●
Halogen light package boom	○
Purpose built material handling stick with reversing linkage	○
Purpose built material handling boom for scrap shears	○
Boom position 2	○
MAGNET SYSTEM	
Hydraulic driven generator	●
Magnet controller	●
Magnet suspension link	○
ATTACHMENTS	
Orange peel grapple	○
Mag grapple	○
Clamshell	○
Magnet	○
Log grapple	○
Scrap shear	○
Power attachment	○
Pipe handler	○

Subject to technical modification.

Standard Equipment ●
Optional Equipment ○

840 M "E" Lift Capacities



Working Equipment K17-1

reach	56'6" (17.23 m)
boom	34'9" (10.6 m)
stick	23'4" (7.1 m)
boom pos.	1

Operator's Cab

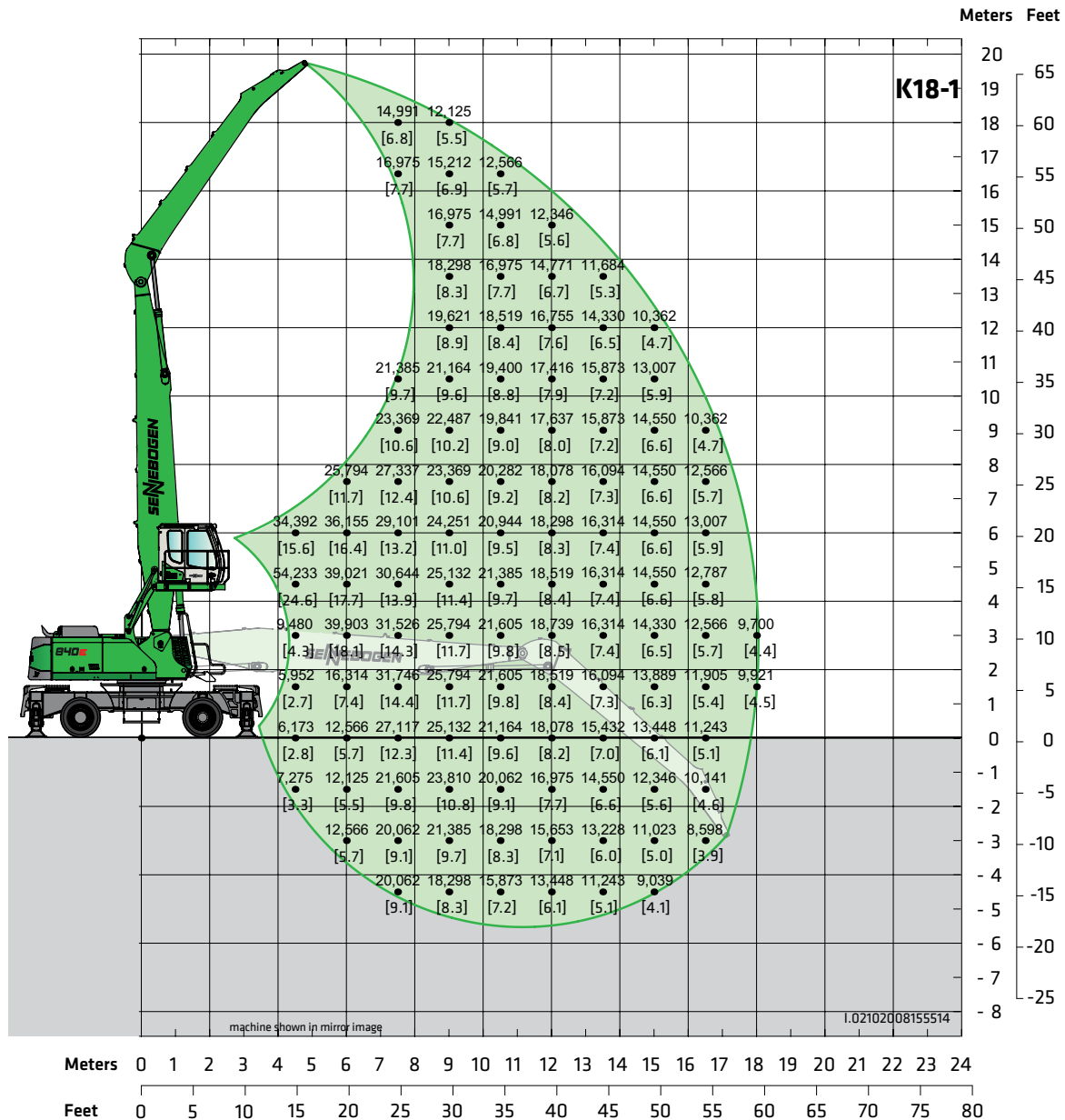
model	E270 maXCab
	hydraulic elevating up
	8'8" (2.65 m) elevation
eye level	approx. 19'8" (6.0 m)

Undercarriage

model	MP42E
	4-point outriggers
tires	8 x 14.00-24
	solid rubber

Lift capacities are stated in pounds. Values in brackets [] are stated in metric tons. Indicated figures are based on ISO 10567 and do not exceed 75% or tipping and 87% of hydraulic capacity and machine standing on firm, level supporting surface. Loads are valid for 360° with machine support on outriggers. Lifting capacities do not include working equipment such as orange peel grapples, magnets, clamshells, etc. The load point is the center line of the attachment pivot mounting pin on the stick. Their weights must be deducted from the numbers indicated in the lifting charts. Please contact SENNEBOGEN or your local dealer for optimum attachment selection. The operator / user of the machine should be fully acquainted with the operator's & safety manual provided by Sennebogen. Capacities apply only to the machine as originally manufactured and equipped by SENNEBOGEN.

840 M "E" Lift Capacities



Working Equipment K18-1

reach	59'3" (18.06 m)
boom	34'9" (10.6 m)
stick	26'3" (8.0 m)
boom pos.	1

Operator's Cab

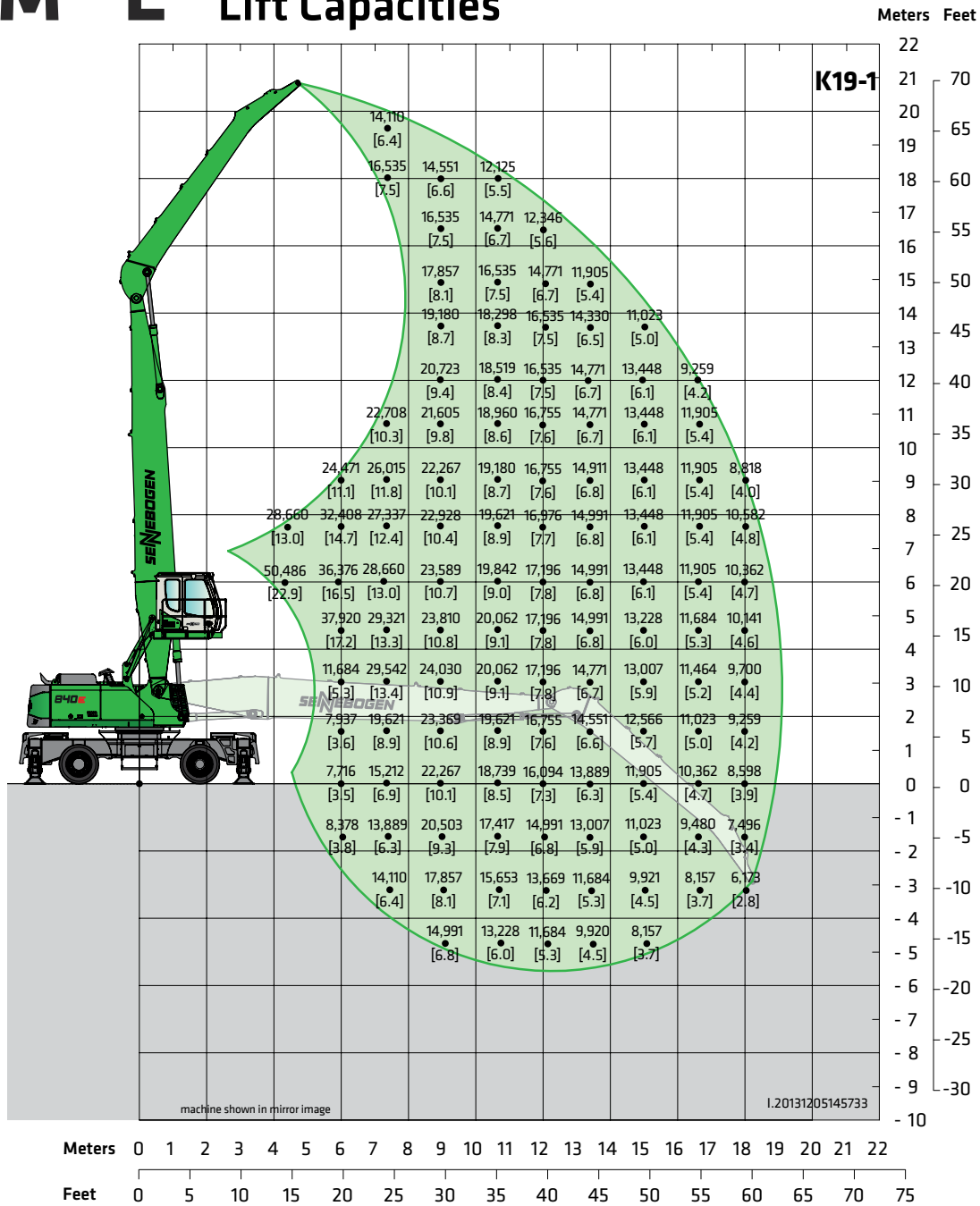
model	E270 maXCab
hydraulic elevating up	
eye level	approx. 19'8" (6.0 m)

Undercarriage

model	MP42E
4-point outriggers	
tires	8 x 14.00-24
solid rubber	

Lift capacities are stated in pounds. Values in brackets [] are stated in metric tons. Indicated figures are based on ISO 10567 and do not exceed 75% of tipping and 87% of hydraulic capacity and machine standing on firm, level supporting surface. Loads are valid for 360° with machine support on outriggers. Lifting capacities do not include working equipment such as orange peel grapples, magnets, clamshells, etc. The load point is the center line of the attachment pivot mounting pin on the stick. Their weights must be deducted from the numbers indicated in the lifting charts. Please contact SENNEBOGEN or your local dealer for optimum attachment selection. The operator / user of the machine should be fully acquainted with the operator's & safety manual provided by Sennebogen. Capacities apply only to the machine as originally manufactured and equipped by SENNEBOGEN.

840 M "E" Lift Capacities



Working Equipment K19-1

reach	62'8" (19.11 m)
boom	38'5" (11.7 m)
stick	26'3" (8.0 m)
boom pos.	1

Operator's Cab

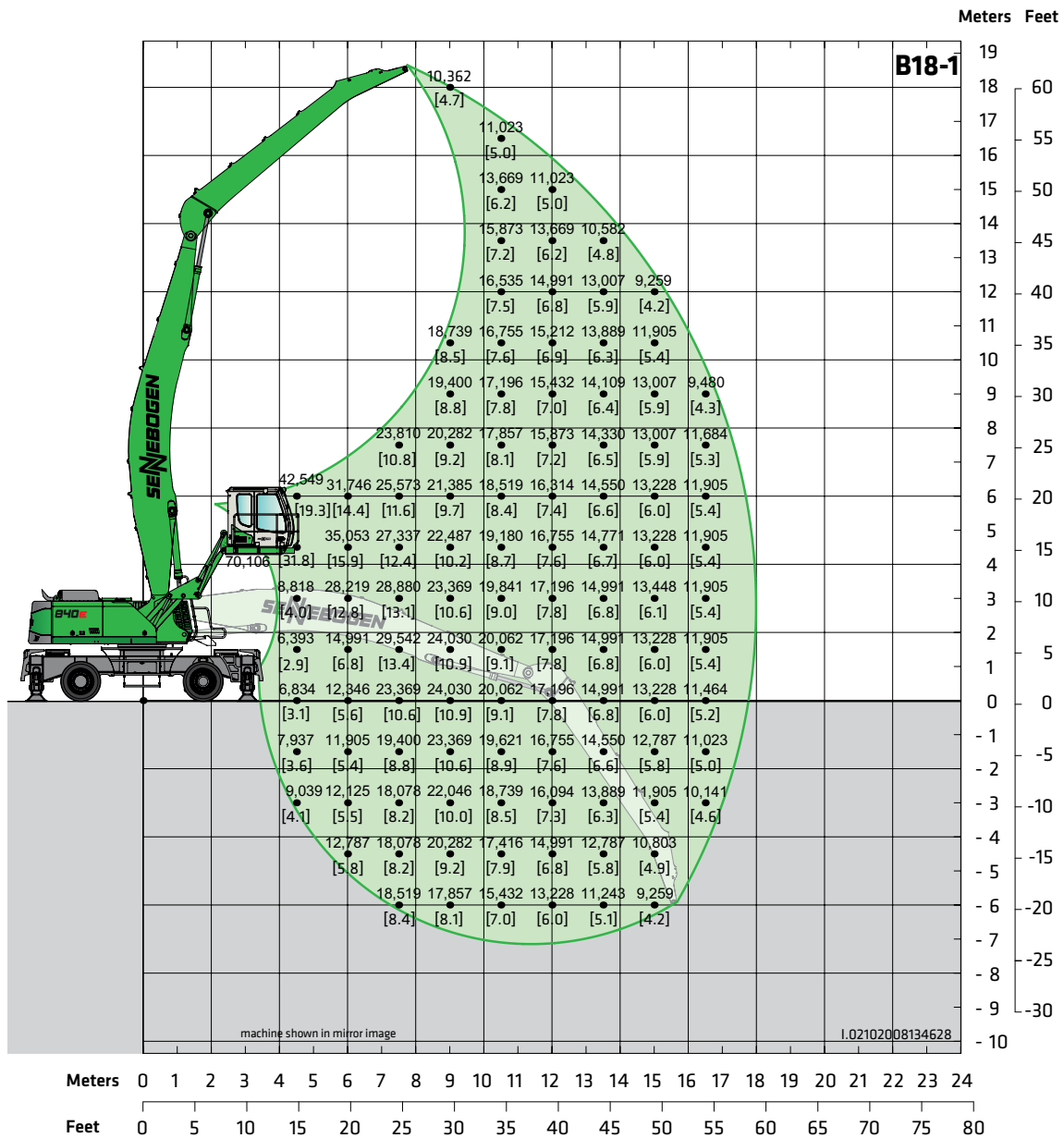
model	E270 maXCab
	hydraulic elevating up
	8'8" (2.65 m) elevation
eye level	approx. 19'8" (6.0 m)

Undercarriage

model	MP42E
	4-point outriggers
tires	8 x 14.00-24
	solid rubber

Lift capacities are stated in pounds. Values in brackets [] are stated in metric tons. Indicated figures are based on ISO 10567 and do not exceed 75% or tipping and 87% of hydraulic capacity and machine standing on firm, level supporting surface. Loads are valid for 360° with machine support on outriggers. Lifting capacities do not include working equipment such as orange peel grapples, magnets, clamshells, etc. The load point is the center line of the attachment pivot mounting pin on the stick. Their weights must be deducted from the numbers indicated in the lifting charts. Please contact SENNEBOGEN or your local dealer for optimum attachment selection. The operator / user of the machine should be fully acquainted with the operator's & safety manual provided by Sennebogen. Capacities apply only to the machine as originally manufactured and equipped by SENNEBOGEN.

840 M "E" Lift Capacities



Working Equipment B18-1

reach	59' (17.99 m)
boom	36'1" (11.0 m)
stick	26'3" (8.0 m)
boom pos.	1

Operator's Cab

model	E300/260 maXCab
	hydraulic elevating up
	& out (optional item)
eye level	approx. 20'4" (6.2 m)

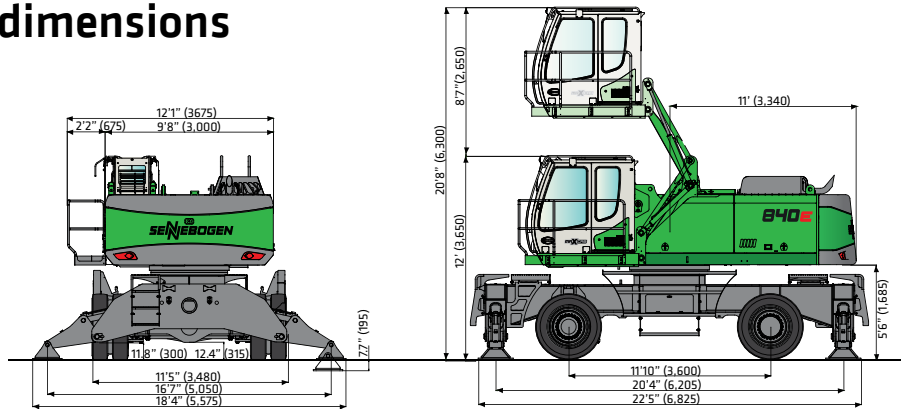
Undercarriage

model	MP42E
	4-point outriggers
tires	4 x 14.00-24
	solid rubber

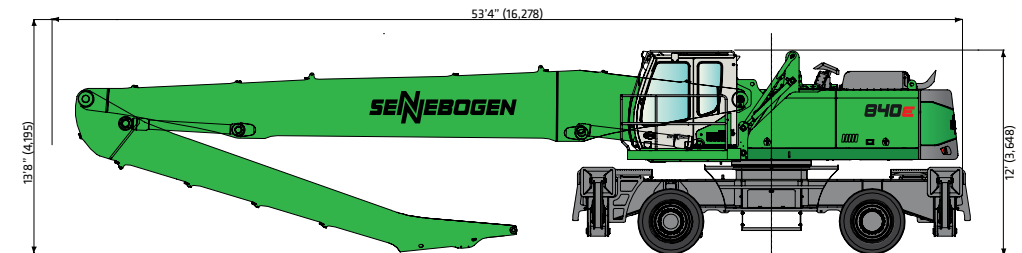
Lift capacities are stated in pounds. Values in brackets [] are stated in metric tons. Indicated figures are based on ISO 10567 and do not exceed 75% or tipping and 87% of hydraulic capacity and machine standing on firm, level supporting surface. Loads are valid for 360° with machine support on outriggers. Lifting capacities do not include working equipment such as orange peel grapples, magnets, clamshells, etc. The load point is the center line of the attachment pivot mounting pin on the stick. Their weights must be deducted from the numbers indicated in the lifting charts. Please contact SENNEBOGEN or your local dealer for optimum attachment selection. The operator / user of the machine should be fully acquainted with the operator's & safety manual provided by Sennebogen. Capacities apply only to the machine as originally manufactured and equipped by SENNEBOGEN.

840EM

Transport dimensions



Reach	Boom Length	Stick Length	Transport Length	Transport Height*	Transport Width
K17-1	34'9" (10,600 mm)	23'4" (7,100 mm)	49'3" (15,000 mm)	12' (3,650 mm)	11'6" (3,500 mm)
K18-1	34'9" (10,600 mm)	26'3" (8,000 mm)	49'3" (15,000 mm)	12' (3,650 mm)	11'6" (3,500 mm)
K19-1	38'5" (11,700 mm)	26'3" (8,000 mm)	51'6" (15,700 mm)	12' (3,650 mm)	11'6" (3,500 mm)
B18-1	36'1" (11,000 mm)	26'3" (8,000 mm)	50'2" (15,300 mm)	12' (3,650 mm)	11'6" (3,500 mm)



transport dimensions only valid for boom position 1 only • boom position 2 may increase transport height & transport length • handrails, catwalks & other accessories are disassembled for transportation • *optional cab E300/260 will increase machine transport height by 2" (50 mm)

"Under our policy of continuous improvements we reserve the right to change specifications, materials and design without prior notice. The illustrations shown may include optional equipment. Always refer to the appropriate Operation and maintenance manual for specific product information. See your local **SENNEBOGEN** dealer for further information."

© 2015 SENNEBOGEN LLC, all rights reserved

SENNEBOGEN

SENNEBOGEN LLC
1957 Sennebogen Trail
Stanley, NC 28078, USA

Phone +1 (704) 347-4910
Fax +1 (704) 347-8894
Email sales@sennebogenllc.com

840M/E-0315

GO FOR GREEN

www.sennebogen-na.com