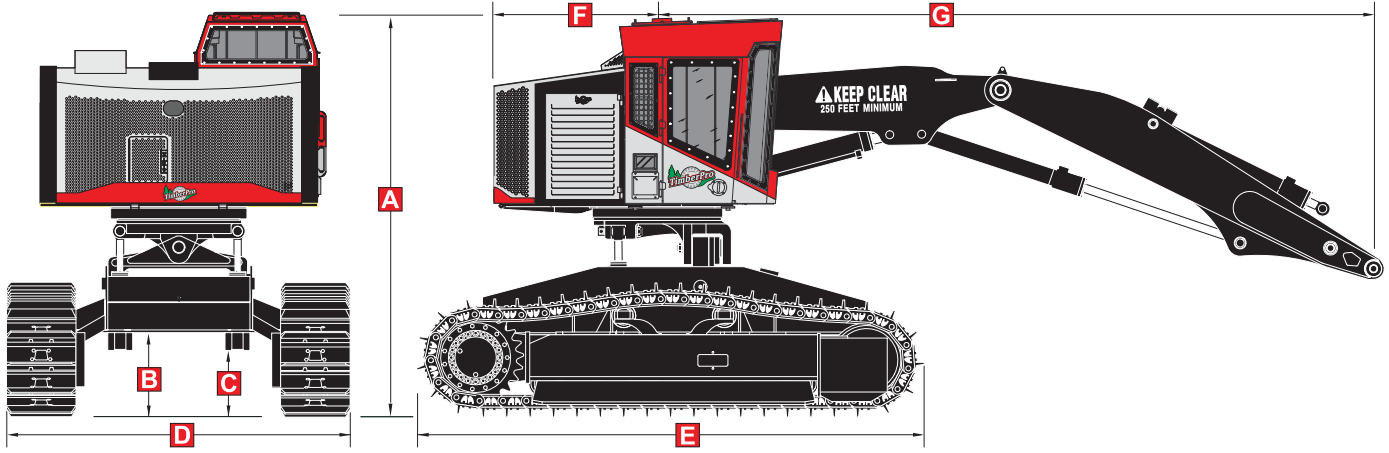




TN725-B
TL725-B
TL735-B





SPECIFICATIONS: TL725B - 55,250 lbs (25,061 kg)

(Approximate "woods ready" operating weight without attachment)

A	11' 11" (3.63 m)
B	28.5" (72.4 cm)
C	22" (55.9 cm)

D	10' 4" (3.15 m)
E	15' 6" (4.72 m)
F	5' 4" (1.65 m)
G	23.71' (6.86 m)

SPECIFICATIONS: TL735B - 59,680 lbs (27,070 kg)

(Approximate "woods ready" operating weight without attachment)

A	12' 4" (3.76 m)
B	32" (82 cm)
C	25.5" (64.8 cm)

D	10' 4" (3.15 m)
E	15' 4" (4.67 m)
F	5' 4" (1.65 m)
G	23.71' (6.86 m)

Ground Pressure - no attachment

- TN725B - 6.4 PSI w/24" shoes
- TL725B - 6.6 psi w/24" shoes
- TL735B - 7.1 psi w/24" shoes
- TL735B - 4.94 psi w/35" shoes

Tractive Effort - no attachment

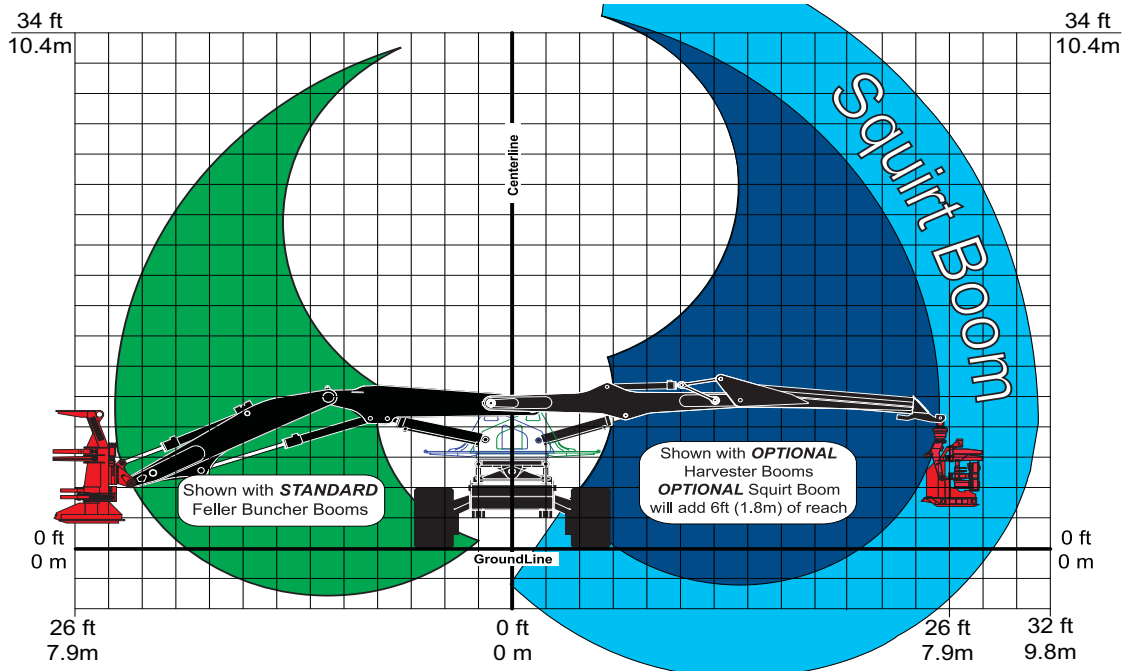
- TN725B - 68,629 lbs (1.38:1 power to weight ratio)
- TL725B - 68,629 lbs (1.24:1 power to weight ratio)
- TL735B - 80,066 lbs (1.34:1 power to weight ratio)

Feller Buncher Lift Capacity:

- (7.2 m) 23.5' 9,220 lbs (4,182 kg)
- (6.1 m) 20' 12,800 lbs (5,806 kg)
- (4.6 m) 15' 17,340 lbs (7,865 kg)
- (3.0 m) 10' 25,580 lbs (11,603 kg)

Harvester Boom Lift Capacity:

- (9.7 m) 31.9' 6,600 lbs (2,994 kg)
- (7.9 m) 25.9' 7,660 lbs (3,475 kg)
- (6.1 m) 20' 12,860 lbs (5,833 kg)
- (4.6 m) 15' 16,480 lbs (7,475 kg)
- (3.0 m) 10' 22,200 lbs (10,070 kg)



TimberPro Inc reserves the right to change specifications without notice or obligation. Product illustrations may be equipped with non-standard equipment.

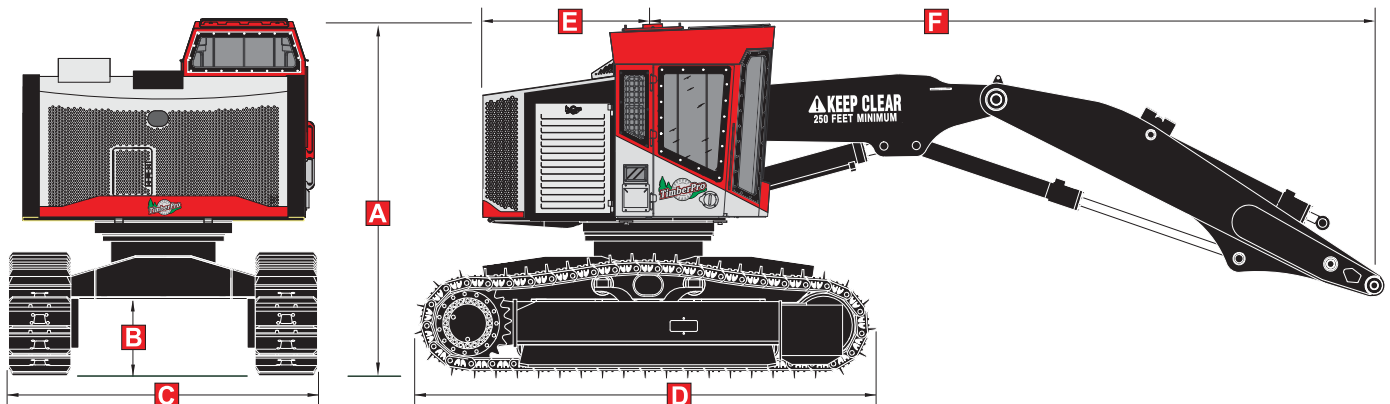
TimberPro Inc.
1407 Industrial Dr.
Po Box 415
Shawano WI 54166 USA

Tel: 715-524-7899
Fax: 715-524-7898
E-Mail: info@timberpro.com
www.timberpro.com



Engine	725	735		
Cummins 8.3 – 300 HP	S	S	24" DG (600 mm)	S NA
24 volt electrical system w/ 100 amp	S	S	24" SG (600 mm)	O S
Auto reversing hyd controlled rad fan	S	S	28" SG (700 mm)	O O
Hydraulics	725	735	36" TG (900 mm)	NA O
Voac control valves & IQAN digital control system	S	S	Auto track brakes	S S
Auto reversing hyd controlled cooling fan.	S	S	Variable track speed control	S S
60 gallon hyd oil reservoir	S	S	L & S forestry final drives and motors	S S
10 micron return oil filter	S	S	Operator's Cab	725 735
100 mesh suction filter w/magnet	S	S	Fully certified for ROPS/FOPS/OPS	S S
Close loop drive circuit (pump for each track drive)	S	S	½" lexan in all windows	S S
Drive pump gear box cooler	S	S	1½" lexan in front window	O O
Hyd tank vacuum pump	S	S	Heater & AC system	S S
Electric hyd oil fill pump	S	S	Air filtered & cab pressurized	S S
Hydrostatic charge relief heater	S	S	AM/FM - weatherband radio	S S
Continuous rotation – upper turntable	S	S	Sirius satellite radio	O O
Boom Options	725	735	Seat - Air ride & heated	S S
Forward type boom w/25' reach	O	O	Deluxe Seat - with air, heat & lumbar	O O
6' squirt for forwarder boom	O	O	Sliding rear window	S S
Carbody & Track Options	725	735	3 escape routes (door,window & roof)	S S
Narrow carbody – 9'5" (2.86m)	S	NA	Halogen lights	S S
24" DG shoes / Short Track			Xenon lights (HID)	O O
Wide Carbody – 10' 4" (3.15m)	O	S	Automatic fire suppression	O O
24" SG shoes / Long Track			Front window fan	S S
Leveling w/Narrow body - 9'9" (3m)	O	O	Cup holder & lunch box w/ thermos	S S
24" SG shoes			Slope meter	S S
Leveling w/Wide body - 10' 4" (3.15m)	O	S	Metal tray for tools	S S
24" SG shoes / Long Track			10 lb fire extinguisher	S S
			30 lb "water" fire extinguisher	O O
			Rear mounted camera system	O O
			Skylight windows	S S

S = STANDARD ~ O = OPTIONAL ~ NA = NOT AVAILABLE



SPECIFICATIONS: TN725B

49,400 lbs (22,407 kg)
 (Approximate "woods ready" operating weight
 without attachment)

A	10' 5" (3.17m)	C	9' 5" (2.86 m)	E	5' 4" (1.65 m)
B	27" (68.5 cm)	D	14' 4" (4.36 m)	F	23.71' (6.86 m)



Air to Air Cooler

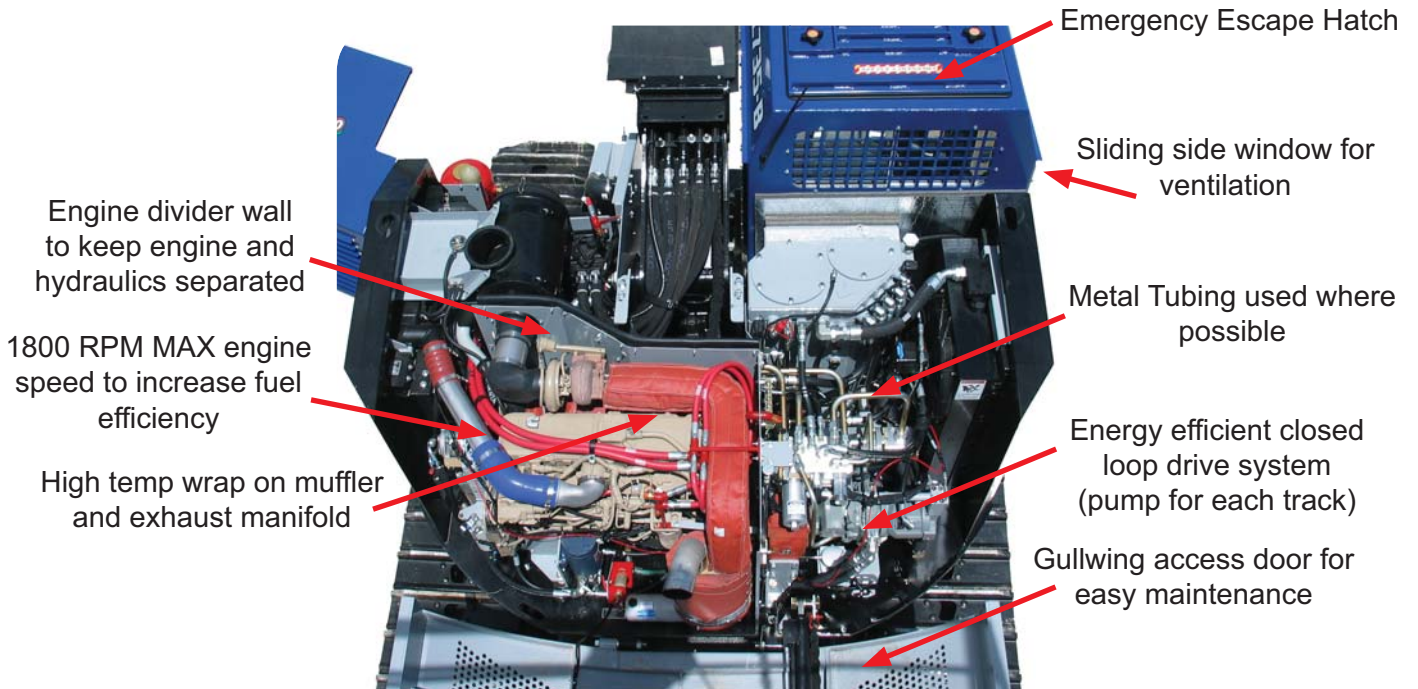
A/C Condenser

Pump Gearbox Cooler

Radiator

Pump Gearbox cooler, A/C Condenser, Air to Air cooler and Radiator mounted side by side to allow less restriction of airflow and nothing to trap debris

Increased visibility to the boom side



Emergency Escape Hatch

Sliding side window for ventilation

Engine divider wall to keep engine and hydraulics separated

Metal Tubing used where possible

1800 RPM MAX engine speed to increase fuel efficiency

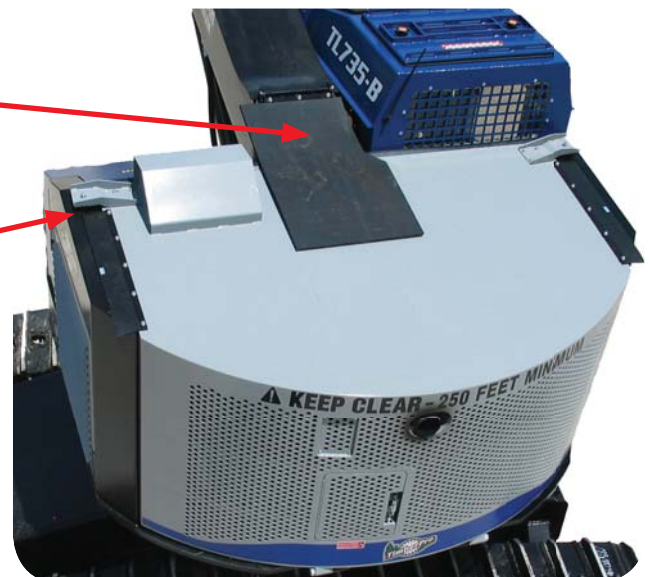
Energy efficient closed loop drive system (pump for each track)

High temp wrap on muffler and exhaust manifold

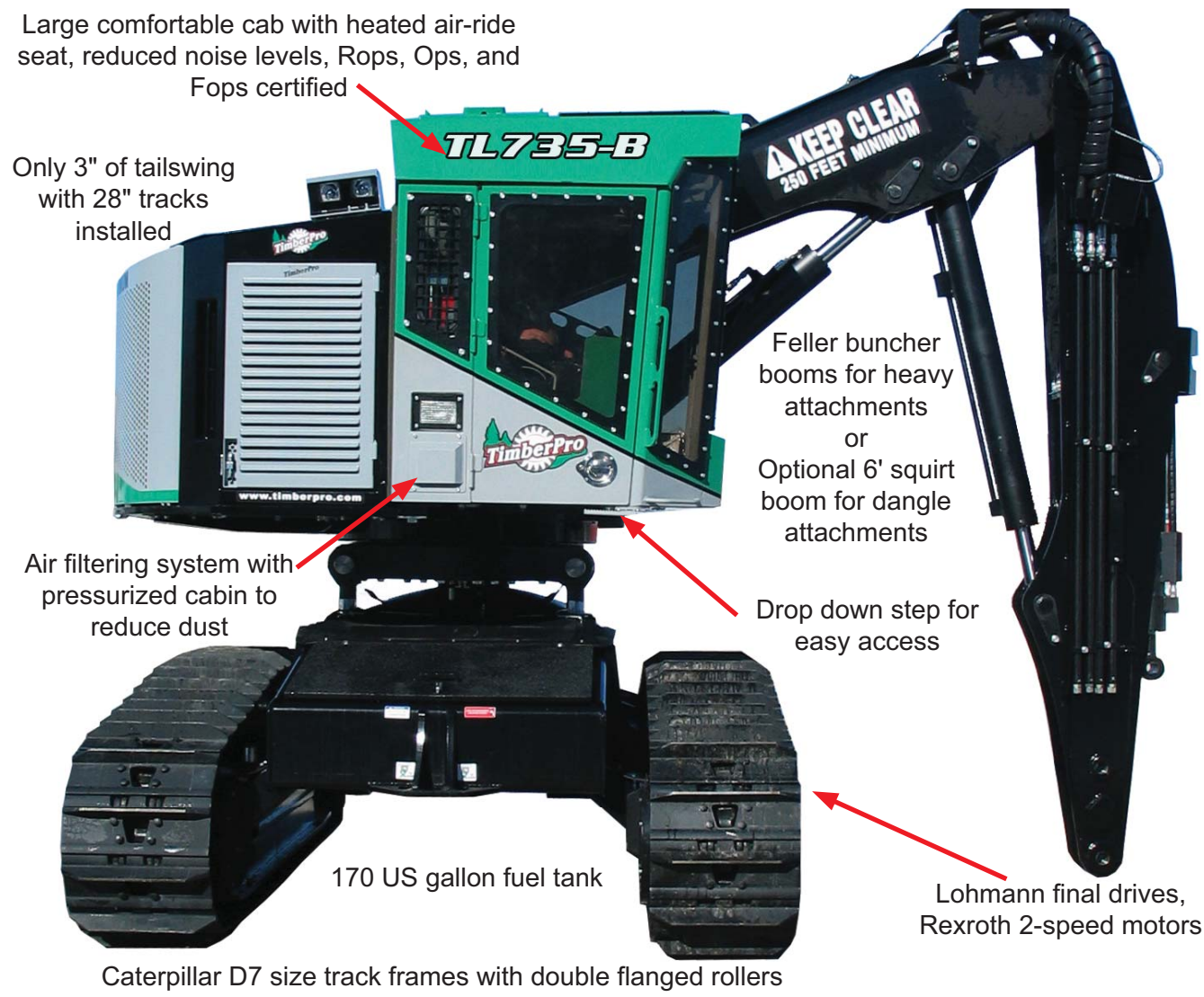
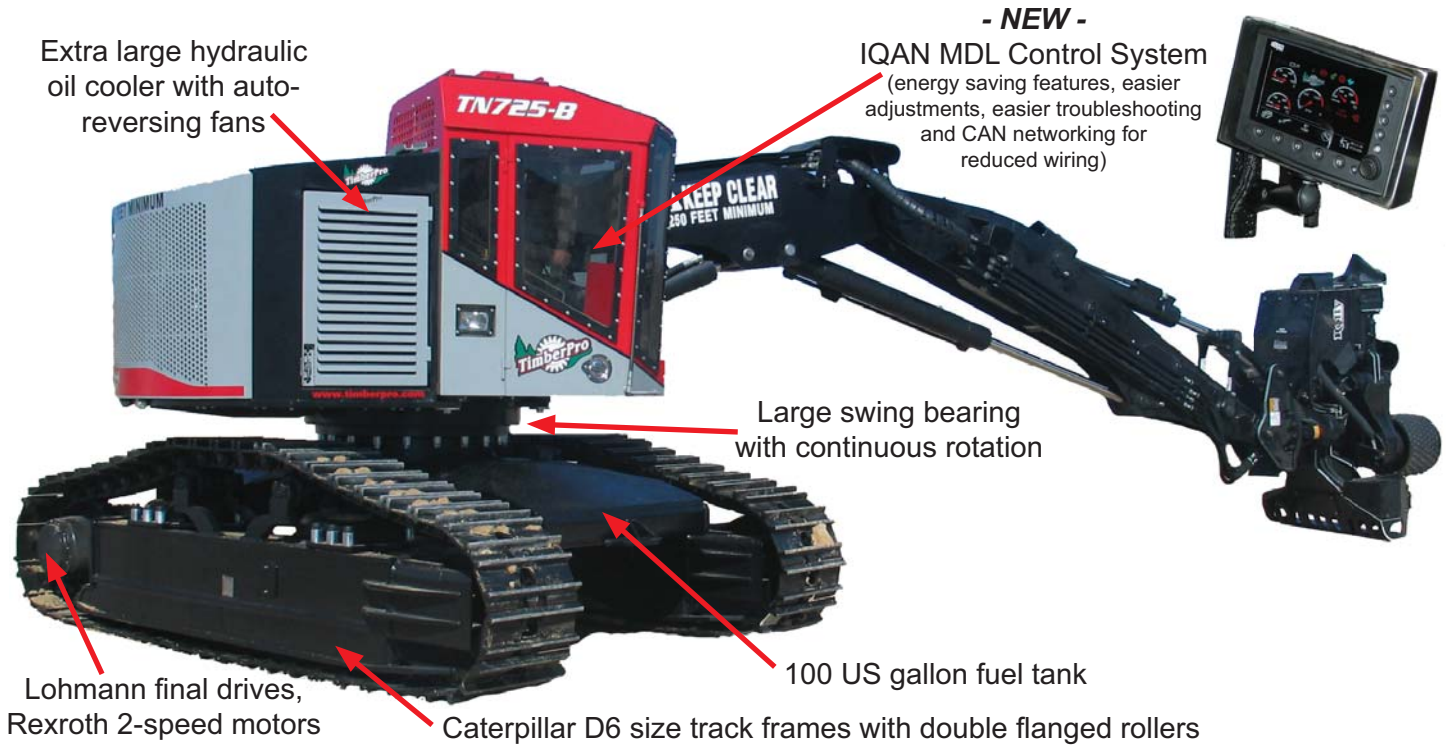
Gullwing access door for easy maintenance

Rubber belting protection added to boom and gullwing to reduce debris in engine and hydraulic compartments

Rubber cones to help strengthen and stabilize gullwing



KEEP CLEAR - 250 FEET MINIMUM





28° Front Leveling

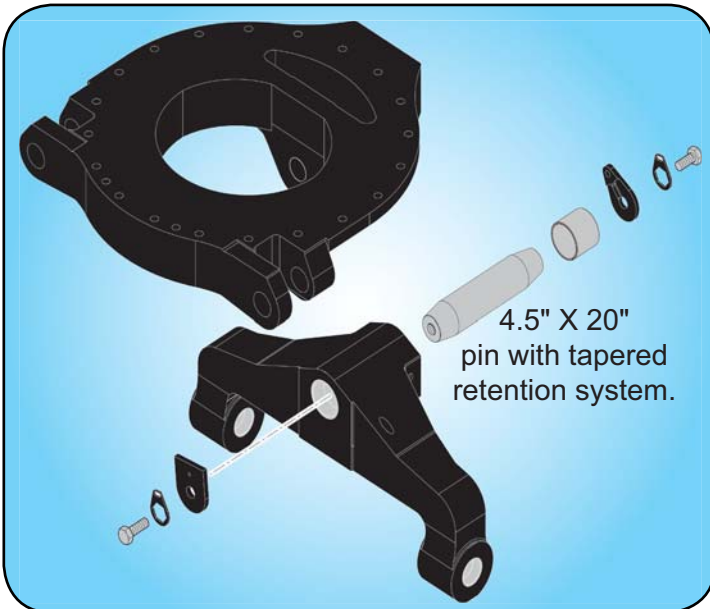


7° Rear Leveling

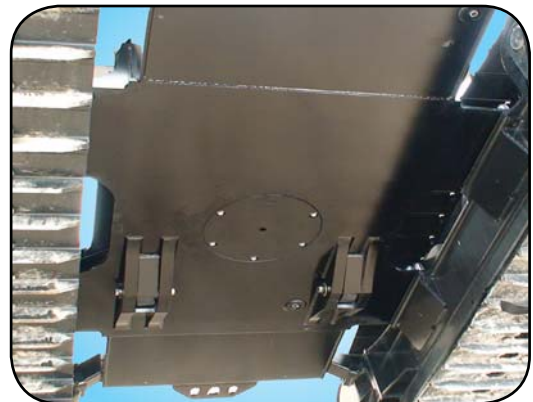


24° Tilt to both sides

Strongest & simplest 4-way leveling in the industry.



Larger pin and Improved pin retention system.
Providing longer life, better reliability and easier service.



Smooth under-body, with recessed 1" spring-loaded panel allowing easy access for maintenance.



Built-in auxiliary hydraulic oil storage tank and easy to access lower fuel pump and filter.