

KOMATSU®

PC300LC-7

FLYWHEEL HORSEPOWER

180 kW **242 HP** @ 1900 rpm

OPERATING WEIGHT

34329–35439 kg **75,682–78,130 lb**

BUCKET CAPACITY

0.88–2.4 m³ **1.15–3.14 yd³**

**power
PLUS**

**PC
300
LC**



Photo may include optional equipment.

HYDRAULIC EXCAVATOR

GALEO

WALK-AROUND

Productivity Features

- **High Production and Low Fuel Consumption**

Production is increased with larger output during Active mode while fuel efficiency is further improved.

- **Maximum Drawbar pull Increased 17%** offering superb steering and slope climbing performance.

Easy Maintenance

- Replacement interval is extended for engine oil, engine oil filter and hydraulic filter
- Remote mounted engine oil filter and fuel drain valve for easy access
- Water separator is standard equipment
- Easier radiator cleaning
- Fuel tank capacity is increased



The latest update to the PC300LC-7 is the Power Plus version. The Power Plus feature results in:

- **Larger Arm Crowd Force and Bucket Digging Force Provide Increased Production**

Arm crowd force is increased 18% and bucket digging force is increased 7% when the Power Max function is applied. (Compared with PC300LC-6).

- Increased lift capacity
- Improved machine stability
- More usable arm crowd and bucket breakout force

- **Higher Lifting Capacity**

PC300LC-7's lateral stability is improved, lifting capacity is also increased.

FLYWHEEL HORSEPOWER
180 kW 242 HP @ 1900 rpm

OPERATING WEIGHT
34329–35439 kg
75,682–78,130 lb

BUCKET CAPACITY
0.88–2.4 m³
1.15–3.14 yd³

Harmony with Environment

- Low emission engine
A powerful turbocharged and air-to-air aftercooled Komatsu SAA6D114E provides 180 kW **242 HP**. This engine meets EPA, EU and Japan Tier 2 emissions regulations, without sacrificing power or machine productivity.
- Economy mode saves fuel consumption
- Low operation noise

Large Comfortable Cab

New PC300LC-7's cab volume is increased by 14%, offering an exceptionally roomy operating environment

- Highly pressurized cab with air conditioner
- Low noise design
- Low vibration with cab damper mounting



Excellent Reliability and Durability

- High rigidity work equipment
- Sturdy frame structure
- Reliable Komatsu manufactured major components
- Highly reliable electronic devices

GALEO

Komatsu's highly productive, innovative technology, environmentally friendly machines built for the 21st century.

PRODUCTIVITY FEATURES

High Production and Low Fuel Consumption

Engine

The PC300LC-7 gets its exceptional power and work capacity from a Komatsu SAA6D114E engine. Output is 180 kW **242 HP**, providing increased hydraulic power and improved fuel efficiency.

Hydraulics

Unique two-pump system ensures smooth compound movement of the work equipment. HydrauMind controls both pumps for efficient engine power use. This system also reduces hydraulic loss during operation.

Four Working Modes

Working Mode Selection

The PC300LC-7 excavator is equipped with four working modes (**A**, **E**, **L** and **B** mode). Each mode is designed to match engine speed, pump speed, and system pressure with the current application. This provides the flexibility to match equipment performance to the job at hand.

Economy Mode

Economy mode is environmentally friendly. Fuel consumption is reduced 20% (compared with PC300LC-7 Active mode) and production is equal to the PC300LC-6 Heavy-duty mode.

Power Max Function

This function temporarily increases digging force by 7% for added power in tough situations.

Lifting Mode

When the Lifting mode is selected, lifting capacity is increased by 7% by raising hydraulic pressure.

Working Mode	Application	Advantage
A	Active mode	<ul style="list-style-type: none"> Maximum production/power Fast cycle times
E	Economy mode	<ul style="list-style-type: none"> Excellent fuel economy
L	Lifting mode	<ul style="list-style-type: none"> Hydraulic pressure is increased by 7%
B	Breaker operation	<ul style="list-style-type: none"> Optimum engine rpm, hydraulic flow

Larger Maximum Drawbar Pull

PC300LC-7's maximum drawbar pull is increased by 17% and provides superb steering and slope climbing performance.

17% increased

Maximum drawbar pull: 264 kN 26900 kgf **59,300 lb.**

Large Lifting Capacity

The PC300LC-7 Power Plus has increased lift capacity and stability over the standard PC300LC-7.

Comparison with 13'2" Arm. Reach: 25', Height, Ground Level, lifting mode.

	Front	Side
PC300LC-7	18,750	11,100
PC300LC-7 Power Plus	20,300	12,300
% Improvement	8.2%	10.8%

Larger Arm Crowd Force and Digging Force Provide Increased Production

Arm crowd force is increased **10%** by improvement of arm cylinder linkage; when Power Max function is applied, arm crowd force is increased by an additional **7%**. As a result the total arm crowd force is increased 18%.

Bucket digging force when Power Max is applied also increased **7%**. The larger digging forces generate the largest production in the **30 ton** 33 U.S. ton class.

*Arm Crowd Force: 16800 kgf **37,040 lb.**

*Bucket Digging Force: 20400 kgf **44,970 lb.**

*Measured with Power Max function, 3185 mm 10'5" and SAE rating

Smooth Loading Operation

Two return hoses improve hydraulic performance. In the arm out function, a portion of the oil is returned to the tank smoothly.

Two return hoses



Two Boom Settings

Smooth mode provides easy operation for gathering blasted rock or scraping down operation. When maximum digging force is needed, switch to Power mode for more effective excavating.

Multi-Function Color Monitor

A newly developed Multi-Function Color Monitor has multiple functions, such as Working mode selection, hydraulic pump oil flow adjustment for matching to attachment, and maintenance interval notice, etc.

Working Mode Selection

The Multi-Function Color Monitor allows for easy selection of the working modes (**A**, **E**, **L** and **B** modes).

EMMS (Equipment Management Monitoring System)

Monitor Function

Controller monitors engine oil level, coolant temperature, battery charge and air clogging, etc. If the controller finds any abnormality, it is displayed.

Maintenance Function

The monitor informs replacement time of oil, filters and other maintenance items when the designated interval is reached.

Trouble Data Memory Function

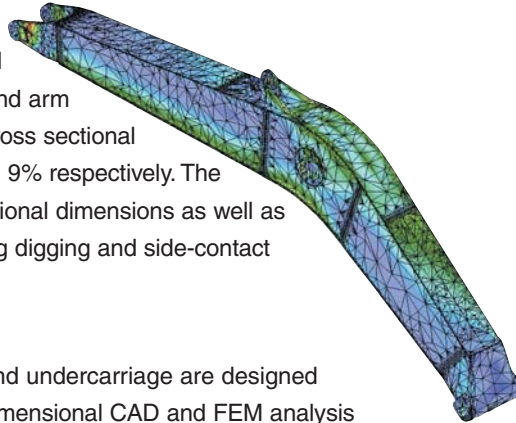
The monitor stores machine abnormalities for effective troubleshooting.



Excellent Reliability and Durability

• High Rigidity Work Equipment

The arm and boom are strengthened to correspond to increasing bucket and arm digging forces. The arm and boom cross sectional strength are also increased 35% and 9% respectively. The boom and arm have large cross-sectional dimensions as well as continuous groove welding, improving digging and side-contact strength.



• Sturdy Frame Structure

The revolving frame, center frame and undercarriage are designed by using the most advanced three-dimensional CAD and FEM analysis technology.

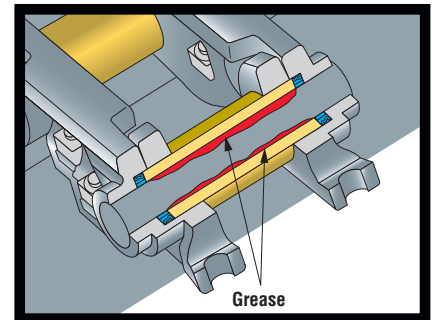
• Reliable Components

All of the major machine components, such as engine, hydraulic pumps, hydraulic motors and control valves, etc., are exclusively designed and manufactured by Komatsu.

• Highly Reliable Electronic Devices

Exclusively designed electronic devices have passed severe testing.

- Controller
- Sensors
- Connectors
- Heat resistant wiring



Grease sealed track provides excellent undercarriage durability.



Track Link with Strut

PC300LC-7 uses track links with strut providing superb durability.

WORKING ENVIRONMENT

Large Comfortable Cab

Comfortable Cab

New PC300LC-7's cab volume is increased by 14%, offering an exceptionally comfortable operating environment. The large cab enables full flat reclining of the seat back.

Pressurized Cab

The air conditioner, air filter and a higher internal air pressure (6.0 mm Aq **0.2" Aq**) prevent external dust from entering the cab.

Low Noise Design

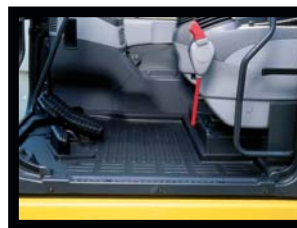
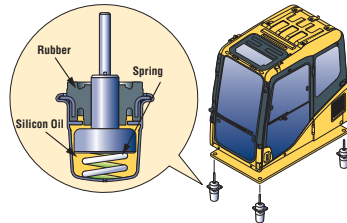
Noise level is remarkably reduced, not only engine noise but also noise when swinging and hydraulic relief.

Low Vibration with Cab Damper Mounting

PC300LC-7 uses new, improved multi-layer viscous mount system that incorporates longer stroke and the addition of a spring. The new cab damper mounting combined with strengthened left and right side decks aids vibration reduction at operator seat.

Vibration at floor is reduced from 120 dB (VL) to 115 dB (VL).

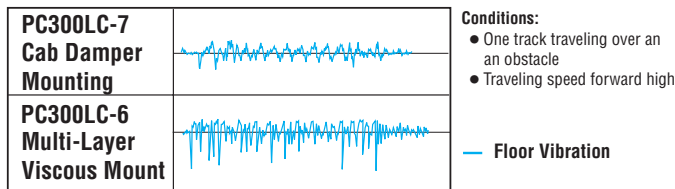
dB (VL) is index for expressing size of vibration.



Washable Cab Floor Mat

The PC300LC-7's cab floor mat is easy to keep clean. The gently inclined surface has a flanged floor mat and drainage holes to facilitate runoff.

Comparison of Riding Comfort



Pitch vertical direction on graph shows size of vibration.

SAFETY FEATURES



Safety Features

Wide Visibility

The right side window pillar has been removed and the rear pillar reshaped to provide better visibility. Blind spots have been decreased by 34%.

Pump/engine room partition

prevents oil from spraying on the engine if a hydraulic hose should burst.

Thermal guarding and fan guards are placed around high-temperature parts of the engine and fan drive.

Steps with non-skid sheet and large handrail. Steps with non-skid sheet provide anti-slip footing for maintenance.

Multi-Position Controls

The multi-position, pressure proportional control levers allow the operator to work in comfort while maintaining precise control. A double-slide mechanism allows the seat and controllers to move together or independently, allowing the operator to position the controllers for maximum productivity and comfort.



Seat Sliding Amount: 340 mm 13.4", increased 120 mm 4.7"



Large Handrail



Defroster



Cab Frame Mounted Wiper



Bottle Holder and Magazine Rack



Thermal Guard

MAINTENANCE FEATURES

Easy Maintenance

Komatsu designed the PC300LC-7 to have easy service access. We know by doing this, routine maintenance and servicing are less likely to be skipped, which can mean a reduction in costly downtime later on. Here are some of the many service features found on the PC300LC-7.



Easy Radiator Cleaning

- Easy Radiator Cleaning**
 Clearance between radiator and oil cooler is increased to facilitate radiator core cleaning with an air nozzle.

- Water Separator** is standard equipment, removing water mixed in fuel and preventing fuel system damage.

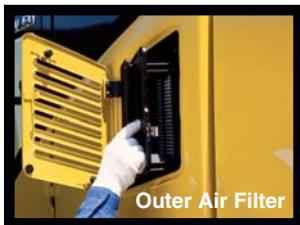


Water Separator



Remote Mounted Engine Oil Filter

- Easy Access to Engine Oil Filter and Fuel Drain Valve.** Engine oil filter and fuel drain valve are remotely mounted to improve accessibility.



Outer Air Filter



Inner Air Filter

Removal and installation of air conditioner filter element, without tools, facilitates cleaning.

- Easy Cab Filter Maintenance**
 Tool free removal of the internal and external cab filters.
- Fuel Tank Capacity Increased**
 Fuel tank capacity is increased from 540 ltr **142.7 U.S. gal** to 605 ltr **160 U.S. gal** to extend operating hours before refueling. The fuel tank is treated for rust prevention and improved corrosion resistance.

Reducing Maintenance Costs

- Hydraulic Oil and Filter/Engine Oil and Filter Replacement Interval Extended**

The new high performance filters are used in the hydraulic circuit and engine. Hydraulic oil filter, engine oil, and engine oil filter element replacement intervals are significantly extended to reduce maintenance costs.

Comparison of Replacement Intervals unit: hours

	PC300LC-7	PC300LC-6
Engine oil	500	250
Engine oil filter	500	250
Hydraulic oil	5,000	5,000
Hydraulic oil filter	1,000	500

High-Pressure In-Line Filter

The PC300LC-7 has high pressure in-line filters installed at the pump discharge ports. This protects the hydraulic system from contamination due to the unlikely event of a pump failure.

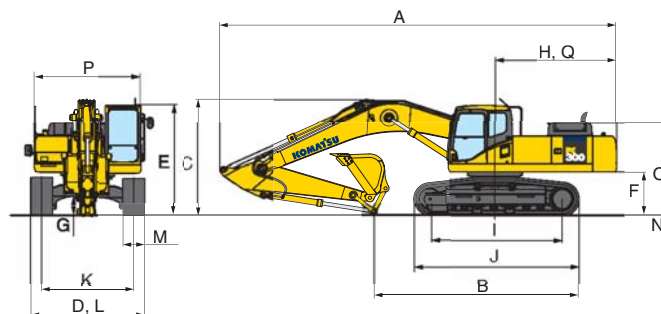


PC300LC-7 **Power PLUS** HYDRAULIC EXCAVATOR

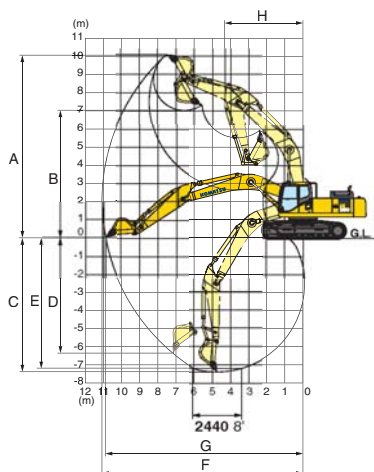


DIMENSIONS

	Arm length	3185 mm 10'5"	4020 mm 13'2"
A	Overall length	11140 mm 36'7"	11170 mm 36'8"
B	Length on ground (transport):	5930 mm 19'5"	5475 mm 18'0"
C	Overall height (to top of boom)	3280 mm 10'9"	3760 mm 12'4"
D	Overall width	3390 mm 11'1"	3390 mm 11'1"
E	Overall height (to top of cab)	3130 mm 10'3"	3130 mm 10'3"
F	Ground clearance, counterweight	1160 mm 3'10"	1160 mm 3'10"
G	Ground clearance (minimum)	500 mm 1'8"	500 mm 1'8"
H	Tail swing radius	3450 mm 11'4"	3450 mm 11'4"
I	Track length on ground	4030 mm 13'3"	4030 mm 13'3"
J	Track length	4955 mm 16'3"	4955 mm 16'3"
K	Track gauge	2590 mm 8'6"	2590 mm 8'6"
L	Width of crawler	3380 mm 11'1"	3380 mm 11'1"
M	Shoe width	800 mm 31.5"	800 mm 31.5"
N	Grouser height	36 mm 1.4"	36 mm 1.4"
O	Machine cab height	2580 mm 8'6"	2580 mm 8'6"
P	Machine cab width	3145 mm 10'4"	3145 mm 10'4"
Q	Distance, swing center to rear end	3405 mm 11'2"	3405 mm 11'2"



WORKING RANGE



	Arm	3185 mm 10'5"	4020 mm 13'2"
A	Max. digging height	10210 mm 33'6"	10550 mm 34'7"
B	Max. dumping height	7110 mm 23'4"	7490 mm 24'7"
C	Max. digging depth	7380 mm 24'3"	8180 mm 26'10"
D	Max. vertical wall digging depth	6480 mm 21'3"	7280 mm 23'11"
E	Max. digging depth of cut for 8' level	7180 mm 23'7"	8045 mm 26'5"
F	Max. digging reach	11100 mm 36'5"	11900 mm 39'1"
G	Max. digging reach at ground level	10920 mm 35'10"	11730 mm 38'6"
H	Min. swing radius	4320 mm 14'2"	4320 mm 14'2"
SAE rating	Bucket digging force at power max.	200 kN 20400 kgf/ 44,970 lb	200 kN 20400 kgf/ 44,970 lb
	Arm crowd force at power max.	165 kN 16800 kgf/ 37,040 lb	139 kN 14200 kgf/ 31,310 lb
ISO rating	Bucket digging force at power max.	227 kN 23100 kgf/ 50,930 lb	227 kN 23100 kgf/ 50,930 lb
	Arm crowd force at power max.	171 kN 17400 kgf/ 38,360 lb	144 kN 14700 kgf/ 32,410 lb



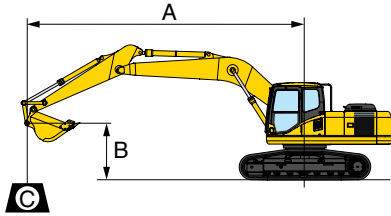
BACKHOE BUCKET, ARM, AND BOOM COMBINATION

Bucket Type	Bucket				Arms		
	Capacity		OLW	Weight	Number of Teeth	10'5"	13'2"
Komatsu HD	0.88 m ³	1.15 yd ³	762 mm 30"	1029 kg 2,268 lb	4	V	V
	1.11 m ³	1.45 yd ³	914 mm 36"	1123 kg 2,476 lb	4	V	V
	1.35 m ³	1.76 yd ³	1067 mm 42"	1246 kg 2,747 lb	5	V	W
	1.58 m ³	2.07 yd ³	1219 mm 48"	1313 kg 2,895 lb	5	W	X
	1.82 m ³	2.38 yd ³	1372 mm 54"	1425 kg 3,142 lb	6	X	Y
Komatsu SD	0.84 m ³	1.10 yd ³	762 mm 30"	1157 kg 2,550 lb	4	V	V
	1.10 m ³	1.40 yd ³	914 mm 36"	1250 kg 2,755 lb	4	V	V
	1.31 m ³	1.71 yd ³	1067 mm 42"	1394 kg 3,074 lb	5	V	W
	1.55 m ³	2.02 yd ³	1219 mm 48"	1504 kg 3,316 lb	5	W	Y
	1.78 m ³	2.33 yd ³	1372 mm 54"	1573 kg 3,467 lb	6	X	Y

V – Used with weights up to 3,500 lb/yd³, W – Used with weights up to 3,000 lb/yd³
 X – Used with weights up to 2,500 lb/yd³, Y – Used with weights up to 2,000 lb/yd³, Z – Not useable



LIFTING CAPACITY



- A: Reach from swing center
- B: Bucket hook height
- C: Lifting capacity
- Cf: Rating over front
- Cs: Rating over side
- ⊗: Rating at maximum reach

Conditions:

- Boom length 6500 mm **21'3"**
- Bucket 1.4 m³ **1.83 yd³** (SAE heaped)
- Bucket weight 1015 kg **2238 lb**
- Lifting mode
- Track shoes: -850 mm **33.5"**

PC300LC-7		Arm: 3185 mm 10'5"										Unit: kg/lb	
B	A	3.0 m 10'		4.6 m 15'		6.1 m 20'		7.6 m 25'		9.1 m 30'		⊗ MAX	
		Cf	Cs	Cf	Cs	Cf	Cs	Cf	Cs	Cf	Cs	Cf	Cs
7.6 m 25'								*6700 kg *14,800 lb	*6700 kg *14,800 lb			*5300 kg *11,750 lb	*5300 kg *11,750 lb
6.1 m 20'								*7350 kg *16,250 lb	6700 kg 14,800 lb			*5250 kg *11,600 lb	5050 kg 1,200 lb
4.6 m 15'						*9200 kg *20,300 lb	*9200 kg *20,300 lb	*7950 kg *17,450 lb	6500 kg 14,300 lb	*6950 kg *15,300 lb	4700 kg 10,350 lb	*5400 kg *11,900 lb	4450 kg 9,800 lb
3.0 m 10'				*14300 kg *31,550 lb	13550 kg 29,900 lb	*10600 kg *23,350 lb	8800 kg 19,400 lb	*8600 kg *19,000 lb	6200 kg 13,650 lb	7300 kg 16,100 lb	4550 kg 10,050 lb	*5700 kg *12,600 lb	4100 kg 9,050 lb
1.5 m 5'				*16550 kg *36,550 lb	12600 kg 27,850 lb	*11750 kg *26,000 lb	8250 kg 18,200 lb	*9250 kg *20,450 lb	5900 kg 13,000 lb	7150 kg 15,750 lb	4400 kg 9,700 lb	*6250 kg *13,800 lb	3950 kg 8,750 lb
0 m 0'		*8100 kg *17,900 lb	*8100 kg *17,900 lb	*17250 kg *38,000 lb	12100 kg 26,700 lb	*12400 kg *27,400 lb	7900 kg 17,400 lb	9300 kg 20,500 lb	5650 kg 12,500 lb	7000 kg 15,450 lb	4300 kg 9,450 lb	6600 kg 14,550 lb	4000 kg 8,850 lb
-1.5 m -5'		*13350 kg *29,450 lb	*13350 kg *29,450 lb	*16700 kg *36,800 lb	11950 kg 26,350 lb	*12350 kg *27,250 lb	7700 kg 17,050 lb	9150 kg 20,200 lb	5550 kg 12,250 lb			7050 kg 15,600 lb	4300 kg 9,500 lb
-3.0 m -10'		*19550 kg *43,100 lb	*19550 kg *43,100 lb	*15150 kg *33,400 lb	12050 kg 26,550 lb	*11450 kg *25,250 lb	7700 kg 17,050 lb	*8750 kg *19,300 lb	5550 kg 12,300 lb			*7650 kg *16,900 lb	4950 kg 10,950 lb
-4.6 m -15'		*16150 kg *35,600 lb	*16150 kg *35,600 lb	*12350 kg *27,250 lb	12350 kg 27,200 lb	*9350 kg *20,650 lb	7900 kg 17,450 lb					*7500 kg *16,500 lb	6350 kg 14,050 lb
-6.1 m -20'				*7150 kg *15,850 lb	*7150 kg *15,850 lb							*6250 kg *13,750 lb	*6250 kg *13,750 lb

* Load is limited by hydraulic capacity rather than tipping. Ratings are based on ISO Standard No. J10567. Rated loads do not exceed 87% of hydraulic lift capacity or 75% of tipping load.

PC300LC-7		Arm: 4020 mm 13'2"										Unit: kg/lb			
B	A	1.5 m 5'		3.0 m 10'		4.6 m 15'		6.1 m 20'		7.6 m 25'		9.1 m 30'		⊗ Maximum	
		Cf	Cs	Cf	Cs	Cf	Cs	Cf	Cs	Cf	Cs	Cf	Cs	Cf	Cs
7.6 m 25'														*4000 *8,900	*4000 *8,900
6.1 m 20'												*5900 *13,050	4850 10,700	*3950 *8,700	*3950 *8,700
4.6 m 15'									*7050 *15,600	6550 14,500	*6450 *14,250	4700 10,450	*4000 *8,850	3700 8,850	
3.0 m 10'				*20050 *44,250	*20050 *44,250	*12550 *27,650	*12550 *27,650	*9500 *20,950	8950 19,750	*7850 *17,350	6200 13,750	*6850 *15,150	4550 10,000	*4200 *9,250	3450 7,600
1.5 m 5'				*8100 *17,850	*8100 *17,850	*15200 *33,500	12850 28,350	*10900 *24,050	8300 18,350	*8650 *19,050	5850 12,950	7100 15,650	4350 9,600	*4500 *9,950	3300 7,350
0.0 m 0'				*8750 *19,300	*8750 *19,300	*16600 *36,700	12000 26,500	*11850 *26,150	7800 17,250	9200 20,300	5550 12,300	6900 15,250	4150 9,200	*5050 *11,100	3350 7,400
-1.5 m -5'		*7700 *17,000	*7700 *17,000	*11900 *26,300	*11900 *26,300	*16800 *37,050	11650 25,700	*12150 *26,850	7500 16,600	9000 19,850	5400 11,900	6800 15,000	4050 8,950	5850 12,950	3550 7,850
-3.0 m -10'		*11600 *25,600	*11600 *25,600	*16350 *36,000	*16350 *36,000	*15900 *35,050	11600 25,600	*11750 *25,950	7450 16,400	8900 19,700	5300 11,750	6800 15,000	4050 8,950	6650 14,700	4000 8,800
-4.6 m -15'		*16150 *35,600	*16150 *35,600	*19300 *42,550	*19300 *42,550	*13850 *30,550	11800 26,000	*10350 *22,850	7500 16,500	*7800 *17,200	5400 11,950			*6750 *14,950	4850 10,750
-6.1 m -20'				*13600 *30,050	*13600 *30,050	*10200 *22,550	*10200 *22,550	*7450 *16,450	*7450 *16,450					*6350 *14,000	*6350 *14,000

* Load is limited by hydraulic capacity rather than tipping. Ratings are based on ISO Standard No. J10567. Rated loads do not exceed 87% of hydraulic lift capacity or 75% of tipping load.



STANDARD EQUIPMENT

- Air conditioner with defroster
- Alternator, 50 Ampere, 24V
- Auto-decel
- Automatic deaeration system for fuel line
- Automatic engine warm-up system
- Batteries, large capacity
- Boom and arm holding valve
- Cab
- Counterweight 7100 kg **15,653 lbs**
- Dry type air cleaner, double element
- Electric horn
- E.M.M.S.
- Engine, Komatsu SAA6D114E
- Engine overheat prevention system
- Fan guard structure
- High pressure in-line hydraulic filters
- Hydraulic track adjusters (each side)
- Multi-function color monitor
- Power maximizing system
- PPC hydraulic control system
- Radiator and oil cooler dustproof net
- Rearview mirror, RH, LH
- Revolving frame deck guard
- Revolving frame under cover
- Seat belt, retractable
- Seat, suspension
- Service valve
- Shoes, triple grouser: 800 mm **31.5"**
- Starting motor, 4.5 kW/24V x 1
- Track guiding guard, center section
- Travel alarm
- Working light, 2 (boom and RH)
- Working mode selection system



OPTIONAL EQUIPMENT

- Arms
 - 2540 mm **8'4"** arm assembly
 - 3185 mm **10'5"** arm assembly
 - 3185 mm **10'5"** with one actuator piping
 - 4020 mm **13'2"** arm assembly
- Boom
 - 6500 mm **21'3"**
 - 6500 mm **21'3"** with one actuator piping
- Convertor, 12V
- Full front guard Level 1
- Full front guard Level 2
- Full length track roller guards
- HD undercovers
- High ambient temperature spec.
- One actuator hydraulic control unit
- Pattern change valve
- Rain visor
- Shoes, triple grouser: 700 mm **28"**
- Shoes, triple grouser: 850 mm **33.5"**
- Sun visor
- Straight travel pedal
- Top guard Level 2
- Track frame undercover
- Two actuator hydraulic control units



ATTACHMENT OPTIONS

- Buckets
 - Lug bushing
 - Play adjustment mechanism
- Komatsu breakers/hammers
- Komatsu plate compactors
- Lincoln autolube systems
- JRB couplers
- PSM thumbs

For a complete line up of available attachments, please contact your local Komatsu distributor

AESS675-00

©2004 Komatsu Printed in USA

DK11(5M) C

11/04(EV-1)

KOMATSU®

440 N. Fairway Drive
P.O. Box 8112
Vernon Hills, IL 60061-8112



www.KomatsuAmerica.com

Materials and specifications are subject to change without notice
KOMATSU is a trademark of Komatsu Ltd. Japan