



2019 PARTS & SERVICE SPECIALS



MAXIMUM PERFORMANCE

HYDRAULIC TUNE-UP SPECIAL

Applicable Machines (1 to 50 ton):

- Wheel loaders
- Hydraulic excavators
- Bulldozers
- Compact track loaders
- Skid steers

Includes:

- Adjust engine speed for best power and efficiency per manufacturer's guidelines
- Verify hydraulic flow and pressures/set to manufacturer's specifications
- Oil sampling (engine, transmission, final drives, swing) + hydraulic particle count
- **FREE**, comprehensive, 50 point inspection
- 1 hour of travel and 60 miles
- **FREE** Energy Savings Operation Report (applicable Komatsu machines only)

\$750 SHOP

\$950 FIELD

**CLICK HERE TO SCHEDULE
ONLINE**

Promotion runs 3/15/2019 - 8/31/2019. Contact your local PSR or service manager for details. Subject to change or cancellation at any time, without notice.



MAXIMUM COMFORT

AIR CONDITIONING INSPECTION

ANY MAKE. ANY MODEL.

Inspection includes:

- Check system charge pressures
- Check metal & flexible lines for wear/leaks
- Check compressor for leakage at shaft area
- Check & clean condenser coil
- Check & clean (or replace) cabin air filters
- 1 hour of travel and 60 miles
- Includes up to 3 lbs. of refrigerant
- **FREE** 50 point inspection

\$300 SHOP

\$500 FIELD

**CLICK HERE TO
SCHEDULE ONLINE**

Promotion runs 3/15/2019 - 8/31/2019. See your local PSR or service manager for more details. Subject to change or cancellation at any time, without notice.



HYDRAULIC CYLINDER RESEALS

LEAKING HYDRAULIC CYLINDERS CAN INTRODUCE DIRT AND OTHER CONTAMINANTS INTO YOUR MACHINE'S HYDRAULIC SYSTEM, PUTTING IT AT RISK! PROTECT YOUR INVESTMENT BY HAVING OUR TEAM REPAIR TODAY!

ANY MAKE. ANY MODEL.

Bring **TWO (2)** or more hydraulic cylinders to our shop for resealing and receive a **15% labor discount!**

We will:

- Disassemble
- Clean
- Inspect
- Advise of any issues (providing an estimate)
- Reseal
- Reassemble

SAVE 15%!

CLICK HERE TO SCHEDULE ONLINE

MAXIMUM PROTECTION

Promotion runs 3/15/2019 - 8/31/2019. Cylinders must be brought in at the same time to receive labor discount.



MAXIMUM CONVENIENCE

KOMATSU PARTS & SERVICE FINANCING

REPAIR NOW. PAY LATER.

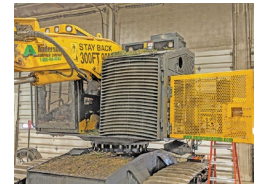
- 0% interest for 15 months, up to \$100,000.
- Finance up to \$300,000 at less than 2¼%, for up to 27 months.
- Up to 5 payment skips available, regardless of the contract length.
- Finance your Komatsu parts-only purchase, or both Komatsu parts and the labor performed by Anderson Equipment.
- Terms and conditions apply. Subject to credit review.

0% FOR 15 MONTHS

UP TO 5 SKIP PAYMENTS

**CLICK HERE TO CONTACT US
FOR MORE INFO**

Contact your local PSR, parts or service manager for details. Subject to change or cancellation at any time, without notice.



MAXIMUM UP-TIME

KOMATSU REPAIR & REBUILD PROGRAM

Level 1 - Component Repair

Includes Utility, Construction, Mining and Forestry machines

- Repair or Reman exchange ONE (1) engine, power module, transmission, torqueflow, final drive, differential, axle assembly, travel motor or main hydraulic pump.
- Up to a 10% parts discount

Level 2 - Machine Overhaul

Includes Utility, Construction, Mining and Forestry machines

- Rebuild or Reman exchange TWO (2) or more engine, power module, transmission, torqueflow, final drive (set of LH+RH), differential, axle assembly, travel motor (set of LH+RH), or main hydraulic pump.
- Up to a 20% parts discount

SAVE UP TO 20%!

**4 YEAR / 10,000 HOUR
REMAN ASSURANCE**

**CLICK HERE TO CONTACT US
FOR MORE INFO**

Contact your local PSR, parts or service manager for details. Subject to change or cancellation at any time, without notice. Exclusions apply.

GROUND ENGAGING TOOLS SPECIAL

Excavator Will-Fit Lip Assemblies (24" to 80"):

- Equipped with Esco's Ultralok® tooth system
- Rectangular lips can be trimmed to fit most buckets
- Made of premium A514 steel
- Corner adapters tacked in place to allow for easy adjustment to a specific bucket
- Save up to 40%

FREE Adapters:

- Purchase TWO (2) or more sets of Esco® Ultralok® teeth
- Receive a **FREE** set of Esco® Ultralok® adapters of the same size

CLICK HERE TO WATCH A SHORT VIDEO ON THE ESCO® ULTRALOK® SYSTEM

SAVE UP TO 40%!

FREE ADAPTERS!

CLICK HERE TO CONTACT US FOR MORE INFO

MAXIMUM PENETRATION

Contact your local PSR, parts manager or parts counter-person for details.



MAXIMUM DRIVE

UNDERCARRIAGE BUNDLE DISCOUNT

PURCHASE A SET OF KTSU® TRACKS, SPROCKETS, IDLERS AND ROLLERS TO RECEIVE A 5% DISCOUNT.

Why KTSU®?

- **Competitive pricing**
- **Largest range of CTL and mini-ex undercarriage in North America**
- **Best-in-class warranty:**
 - *Mini-excavator tracks carry an 18 month, non pro-rated warranty.*
 - *Compact track loader metal-core tracks carry a 14 month, non pro-rated warranty.*
 - *Compact track loader non-metal-core tracks carry a 12 month, pro-rated warranty.*
 - *Steel hard parts carry a 12 month or 1,200 hour (whichever comes first) warranty.*

SAVE 5%!

CLICK HERE TO CONTACT US FOR MORE INFO

CLICK HERE TO WATCH A SHORT VIDEO!

Promotion runs 3/1/2019 thru 5/1/2019. Contact your local PSR, parts manager or parts counter-person for details.

HYDRAULIC HOSE SPECIAL



MAXIMUM CONFIDENCE

BRING TWO (2) OR MORE HYDRAULIC HOSES IN FOR FABRICATION AND RECEIVE A 10% DISCOUNT!

Upon visually inspecting your machine during daily start-up/shut-down, pay close attention to chaffed, bubbling or dry-rotted hoses and take advantage of our hydraulic hose special to repair **BEFORE FAILURE!**

DID YOU KNOW that we use Gates® MEGACLEAN™ foam projectiles on every custom hose we build? These projectiles are 20-30% larger than the hose ID, which thoroughly cleans the hose from inside out, leaving nothing behind that could potentially contaminate your hydraulic system.

SAVE 10%!

**CLICK HERE TO CONTACT US
FOR MORE INFO**

Promotion runs 3/15/2019 - 8/31/2019. Contact your local PSR, parts manager or parts counter-person for details.



MAXIMUM EFFICIENCY

COMPLETE FUEL TREATMENT

BENEFITS OF ENERTECH LABS® COMPLETE FUEL TREATMENT™:

- Reduces EGR system clogging
- Reduces active regeneration (DPF)
- Chemically removes water
- Boosts cetane 4 to 6 points
- Lowers gelling of fuel (-35 to -40F)
- Improves lubricity
- Inhibits corrosion
- Cleans fuel injectors and pumps
- Improves power
- Helps reduce rough running engines
- Prevents icing and stabilizes fuel

**SAVE UP TO 23%!
CLICK HERE TO ORDER
ONLINE**

Buy a case and receive a 20% discount!

Order (any parts) from our website and save an additional 3%!

Part Number	Description	Ounces/ Gallons	Treatment Gallons	Case Qty.
10703	CFT	12 oz.	40	24
10704	CFT (Concentrate)	12 oz.	100	24
10705	CFT	32 oz.	250	12
10706	CFT	1 gal.	1,000	4
10706A	CFT	2.5 gal.	2,500	2
10707	CFT	5 gal.	5,000	1
10709	CFT	55 gal.	55,000	1
10700	CFT	275 gal.	275,000	1

Promotion runs 3/15/2019 - 8/31/2019.



MAXIMUM CLEAN-UP

BROOM WAFERS

PURCHASE YOUR BROOM WAFERS FROM ANDERSON EQUIPMENT AND SAVE BIG WITH OUR MULTI-LEVEL DISCOUNT SPECIAL!

- Buy **THREE (3)** or more sets at one time and receive a **5% discount**.
- Buy a “skid” (240 wafers) at one time and receive a **10% discount**.
- Buy multiple skids at one time and receive up to a **15% discount**.

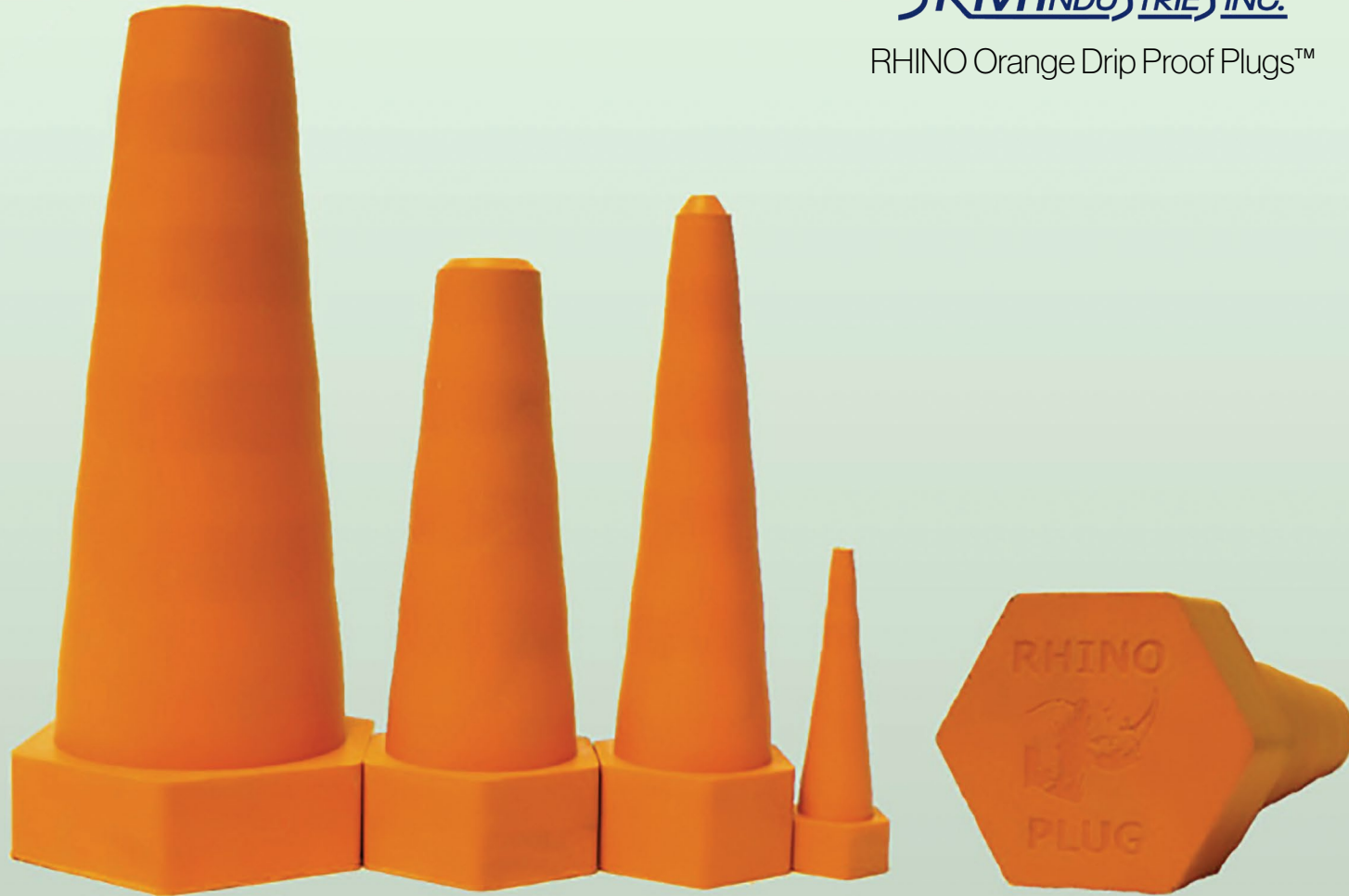
SAVE UP TO 15%!

**CLICK HERE TO CONTACT US
FOR MORE INFO**

Contact your local PSR, parts manager or parts counter-person for details.



RHINO Orange Drip Proof Plugs™



HYDRAULIC DRIP PROOF PLUGS

Material Specifications:

- Nitrile-NBR
- FDA approved ingredients

Features & Benefits:

- High quality oil resistant rubber
- Strong and reusable
- Protects the environment

Uses:

- Anywhere hydraulics are in use
- A handy tool for emergency leaks (one plug covers many sizes)

1. INSERT



2. PUSH



3. PUSH & TWIST



Part Number	Size	Package Quantity	Size Range	
			In.	Mm.
ROPLUG-1	Mini	20	0.05 to 0.42	1.27 to 10.66
ROPLUG-2	Small	12	0.16 to 0.89	4.06 to 22.60
ROPLUG-3	Medium	10	0.57 to 1.08	14.47 to 27.43
ROPLUG-4	Large	4	0.90 to 1.69	22.86 to 42.92
ROPLUG-K	Mixed Kit	2 of each	0.05 to 1.69	1.27 to 42.92

CLICK ABOVE TO ORDER ONLINE AND SAVE 3%!

Contact your local PSR, parts manager or parts counter-person for details.



MAXIMUM LONGEVITY

PREVENTATIVE MAINTENANCE AGREEMENTS

AN ANDERSON EQUIPMENT PM AGREEMENT IS THE BEST WAY TO ASSURE YOUR EQUIPMENT'S MAINTENANCE NEEDS ARE BEING FULLY ADDRESSED.

Benefits include:

- Factory trained technician performed
- Parts and labor price "lock" for entire length of agreement
- Can be purchased at any time
- Oil sampling at each interval
- Proper disposal of waste oil and filters
- Permanent record keeping
- 50 point inspection at each service interval
- Prepay agreement total and receive a 5% discount

[CLICK HERE FOR MORE INFO ON OUR PM AGREEMENTS](#)

SAVE 5%!

[CLICK HERE TO CONTACT US FOR MORE INFO](#)

Contact your local PSR, service manager or salesman for details.

1. **Access our website at www.andersonequip.com.**
2. **Click “Login” at the top of the screen.**
3. **Click “Create New Account” on the right.**
4. **Fill the required info fields and click “Save Changes”.**
5. **Hover over “Parts” (along the top ribbon) and select the drop down option “Buy Parts Online”.**
6. **Enter one or multiple part numbers and click “Search”, then click “Add to Cart”.**

FEATURES & BENEFITS

- You can enter multiple part numbers at once, copy and paste them from a spread sheet or paste them from Komatsu CSS into the box above the word “search”.
- The system will automatically lookup supersedures if you enter an old part number.
- The system will show you alternative parts, used parts and reman where available.
- The system will display availability for all parts so you can gauge how quickly you can get them.
- The system will find parts even if there are punctuation discrepancies with leading zeros, dashes, etc.
- If you are disconnected while creating an order, the system will remember what you had and everything will be there when you return to the site.
- If you are logged into your Anderson account when working on your order, the site will remember your order even if you subsequently access your account from a different computer.
- Your historical Ship-To addresses will be available on the Ship-To page so you can populate the Ship-To information with a single click.
- Under the “Parts” menu at the top of the web page, you will find a link to Customer Parts Order Inquiry which will show you the real time status of all of your parts orders including orders which were not entered through the Website.
- Under Parts/Customer Equipment or Service/Customer Equipment (which are two paths to the same page), you can see all of your equipment. Clicking on an Equipment line will take you to a page where you can find additional information about the machine including historical parts orders and work orders.
- You can re-order parts from prior parts orders or work orders.

The screenshot shows the top navigation bar with links for Home, Buy Parts Online, Login, Contact Us, Careers, Site Map, and Google. Below this is a search bar with a 'Search for Parts' button and a 'Shopping Cart(0)' button. A note below the search bar reads: 'Note: Please use these Navigation buttons instead of your back button to jump between elements of your order.' Below the search bar is a form with a 'Search a single P/N:' field, a 'Qty: 1' field, and a 'SEARCH' button. To the right of the search bar is a 'Cart Empty' message. Below the search bar is a 'Enter Part Numbers (one Part Number per line) - View Advanced Search Instructions' field. A note below this field reads: 'Separate P/N from Qty using an asterisk (ie "P/N*Qty" or "Qty*P/N") or type P/Ns without Quantities for Qty=1.' Below the search bar is a 'SEARCH' button and an 'Optional Filter by Manufacturer: --All Manufactures--' dropdown menu. A note below the dropdown menu reads: 'Note: The Manufacturer filter is generally not necessary. Use it if you are getting too many false matches.' Below the search bar is a 'We have found the following based on your Search and suggested quantities. Please review and adjust quantities and then click "Add to Cart". You can further edit quantities of items in your cart before finalizing your order.' Below this is a table with columns for 'exact match', 'HYD ADAPTERS', 'RHINO MIXED ORANGE PLUG KIT', and '448.62 X 1 0'. A note below the table reads: 'Available: BRIDGEVILLE (MAIN PARTS WAREHOUSE)'. Below the table is a 'CLICK HERE TO SHOW YOUR PRIOR INQUIRIES' button.

Anderson Equipment Company was founded in 1935 by H.W. Anderson and his partner C.K. Burson. Used and rebuilt construction equipment comprised a large part of the firm's inventory in the late 1930's and new construction and mining equipment lines were steadily added over the years. Since its inception, the company has continuously broadened its sales and service territories in Western Pennsylvania. In 1979, Anderson expanded into West Virginia and has become the market leader in rotary drills. By offering customers outstanding equipment and superior product support, Anderson is now a key supplier to the largest mining operations in the state.

In 1996, Anderson acquired Rupp Rental and Sales in upstate New York. This strategic acquisition brought the capabilities of two family-owned companies together to offer increased products and services. The ownership of a rental company has enabled Anderson to become more aggressive in the rental market in Pennsylvania and West Virginia while expanding its sales expertise north into New York.

Anderson's third generation of family ownership demonstrated their commitment to growing the company via their acquisition of R.C.Hazelton of New Hampshire, Vermont and Maine in November 2009 followed by their acquisition of The Oliver Stores of Maine and New Hampshire in December 2012.

Anderson continues to refine its product lines and services to better serve our customers. The Hazelton and Oliver Stores acquisitions bring unmatched forestry expertise to Anderson's existing portfolio of construction, mining and road building knowledge. We have established a reputation for developing innovative solutions to specialized job site applications.

- New and used equipment sales
- Rent to rent
- Rent to buy
- Equipment leasing
- OEM Parts
- Authorized OEM

With 18 full service locations across Pennsylvania, New York, West Virginia, Maine, New Hampshire and Vermont, our infrastructure affords us the ability to seamlessly fulfill our customers' needs from Kentucky to Canada. Although Anderson Equipment Company has changed dramatically over the years, one characteristic has remained the same - its reputation for **Quality: people, products and services.**



Click the QR code to visit our website.

TOUGH JOBS
REQUIRE Ktsu TRACKS
AMERICA
QUALITY AT A GREAT PRICE!



Prices and promotions mentioned within are subject to change or cancellation at any time, without notice.

Bridgeville, PA
 1000 Washington Pike
 Bridgeville, PA 15017
 P. 412.343.2300
 F. 412.504.4250

Clearfield, PA
 7550 Clearfield
 Curwensville Hwy
 Clearfield, PA 16830
 P. 814.765.5311
 F. 814.765.6820

Shippensburg, PA
 20561 Paint Blvd.
 Shippensburg, PA 16254
 P. 814.226.4100
 F. 814.226.5821

Somerset, PA
 436 Riggs Rd.
 Charleston, WV 15001
 P. 814.443.2867
 F. 814.443.4592

Charleston, WV
 1 Andy's Way
 Charleston, WV
 25309-8102
 P. 304.756.2800
 F. 304.366.7219

Fairmont, WV
 2007 Ruskin Dr.
 Pleasant Valley, WV
 26554
 P. 304.366.3075
 F. 304.366.7214

Buffalo, NY
 2140 Military Road
 Tonawanda, NY 14150
 P. 716.87.71992
 F. 716.87.71581

Rochester, NY
 115 Middle Road
 Henrietta, NY 14467
 P. 585.334.6770
 F. 585.334.9416

Syracuse, NY
 6317 Thompson Rd.
 Syracuse, NY 13206
 P. 315.463.8673
 F. 585.334.9416

Albany, NY
 912 Albany Shaker
 Road
 Latham, NY 12110
 P. 518.785.4500
 F. 518.783.1773

Watertown, NY
 22607 Murrok Circle
 Watertown, NY 13601
 P. 315.788.5512
 F. 315.785.8326

Anderson
 EQUIPMENT COMPANY
 Your COMPLETE Equipment Solution
 1-800-414-4554 | andersonequip.com

Quality People.
Quality Products.
Quality Service.

Endicott, NY
 720 E. Franklin St.
 Endicott, NY 13760
 P. 607.748.3400
 F. 607.748.5564

Olean, NY
 4176 Route 417
 Allegany, NY 14706
 P. 716.372.8822
 F. 716.372.7198

Gorham, ME
 18 Gorham Industrial
 Parkway
 Gorham, ME 04038
 P. 207.591.5482
 F. 207.591.5515

Bangor, ME
 142 Target Industrial
 Circle
 Bangor, ME 04401
 P. 207.942.0177
 F. 207.942.1371

Manchester, NH
 1645 Candia Rd.
 Manchester, NH 03109
 P. 603.627.7696
 F. 603.627.5731

Lancaster, NH
 565 Main Street
 Lancaster, NH 03584
 P. 603.788.5591
 F. 603.788.2208

East Montpelier, VT
 151 Packard Rd.
 East Montpelier, VT
 05651
 P. 802.223.9689
 F. 802.223.1418