





**STAY SAFE.  
STAY PRODUCTIVE.**  
with **Anderson Equipment.**

**MAXIMUM SAFETY**

## WALKAROUND INSPECTION

### 85 POINT INSPECTION INCLUDES:

- Numerically rated (1-5) condition assessment of 85 machine components.
- **HUGE** focus on safety critical items.
- Full report with a prioritized (“Must”, “Should” or “Could” fix) list of necessary and suggested repairs.
- **FREE** of charge with every Anderson Equipment shop or field billable work order.

**FREE!**

WITH ANY SHOP OR FIELD CALL

*Call your local service manager today to schedule PM service, diagnostic request or any other need you may have!*

# PREPARE NOW.

**DPF / SCR SYSTEM**  
**FUEL INJECTORS**  
**INJECTION PUMPS**  
**WATER PUMPS**  
**RADIATORS**  
**TURBOCHARGERS**  
**ALTERNATORS**  
**STARTERS**  
**BATTERIES**  
**UNDERCARRIAGES**  
**HOSES**  
**BELTS**  
**SAFETY CRITICAL**  
**PINS & BUSHINGS**

**MAXIMUM READINESS**

**SHOP SPECIAL**

#### Applicable machines:

- Komatsu wheel loaders
- Komatsu hydraulic excavators
- Komatsu bulldozers
- Sennebogen material handlers
- Anderson-supported Tier IV engine machines

#### Inspection includes:

- Full "PM Clinic" to determine health / performance
- DPF / SCR system inspection (where applicable)
- Full undercarriage inspection (where applicable)
- Oil sampling (engine, transmission, final drives, swing) + **hydraulic particle count**
- **FREE**, comprehensive, 85 point inspection
- **FREE** Energy Savings Operation Report (applicable Komatsu machines only)

**\$850**

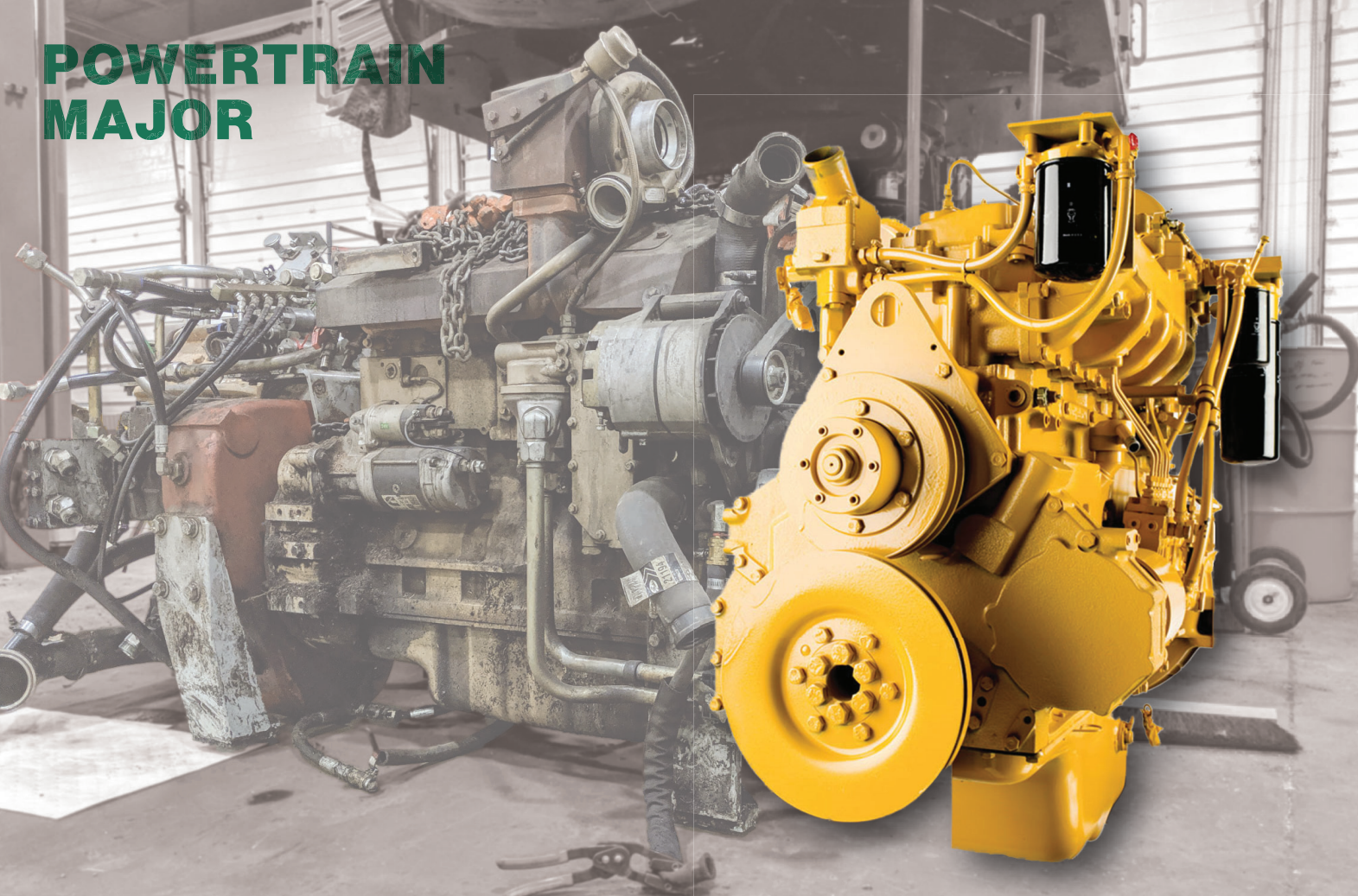
*INSPECTION PRICE  
MENTION PROMO CODE 0064*

**10% LABOR DISCOUNT**

*OFF ANY SUGGESTED REPAIRS\**

Promotion runs 11/1/2019 - 1/31/2020. Contact your local service manager for details.  
Subject to change or cancellation at any time, without notice.  
\*Excludes major component repairs or replacement (e.g. engines, transmissions, etc.).

# POWERTRAIN MAJOR



**MAXIMUM UP-TIME**

# KOMATSU REPAIR & REBUILD PROGRAM

## Level 1 - Component Repair

*Includes Utility, Construction, Mining and Forestry machines*

- Anderson-performed Repair or Reman exchange ONE (1) engine, power module, transmission, torqueflow, final drive, differential, axle assembly, travel motor or main hydraulic pump.
- Up to a **10%** parts discount

## Level 2 - Machine Overhaul

*Includes Utility, Construction, Mining and Forestry machines*

- Anderson-performed Rebuild or Reman exchange TWO (2) or more engine, power module, transmission, torqueflow, final drive (set of LH+RH), differential, axle assembly, travel motor (set of LH+RH), or main hydraulic pump.
- Up to a **20%** parts discount

*Contact your local PSR, parts or service manager for details. Subject to change or cancellation at any time, without notice. Exclusions apply.*

**SAVE UP TO 20%!**

*MENTION PROMO CODE 0039*

**4 YEAR / 10,000 HOUR  
REMAN ASSURANCE**



# KOMATSU PARTS & SERVICE FINANCING

## WINTER SPECIAL PROMO RATES!

- 0% interest for 15 months, up to \$100,000.
- Finance \$100,000 to \$150,000 at 1.24% for up to 21 months.
- Finance up to \$300,000 for 2.24% up to 27 months.
- 3 payment skips available per 12-month period.
- Finance your Komatsu parts-only purchase, or both Komatsu parts and the labor performed by Anderson Equipment.
- Terms and conditions apply. Subject to credit review.
- *Winter Special runs 12/1/2019 - 3/31/2020.*

**0% FOR 15 MONTHS**

**3 SKIP PAYMENTS**

**MAXIMUM CONVENIENCE**

Contact your local PSR, parts or service manager for details. Subject to change or cancellation at any time, without notice.

**ALL MAKES.**

# HYDRAULIC CYLINDER RESEALS

**LEAKING HYDRAULIC CYLINDERS CAN INTRODUCE DIRT AND OTHER CONTAMINANTS INTO YOUR MACHINE'S HYDRAULIC SYSTEM, PUTTING IT AT RISK! PROTECT YOUR INVESTMENT BY HAVING OUR TEAM REPAIR TODAY!**

Bring **TWO (2)** or more hydraulic cylinders to our shop for resealing and receive a **15% labor discount!**

**We will:**

- Disassemble
- Clean
- Inspect
- Advise of any issues (providing an estimate)
- Reseal
- Reassemble

**SAVE 15%!**  
MENTION PROMO CODE 0059

Scan the QR code to schedule service



*Promotion runs 11/1/2019 thru 1/31/2020. Cylinders must be brought in at the same time to receive labor discount. Subject to change or cancellation at any time.*

**MAXIMUM PROTECTION**

**ALL MAKES.**



# KOMATSU BATTERIES

**GENUINE KOMATSU BATTERIES: BUILT TO LAST- BACKED BY OUTSTANDING WARRANTY (UP TO 18 MONTHS, NO PRO-RATION).**

*Just a few of our most popular batteries...*

BCI Group Size	Komatsu Part No.	CCA	RC	CA	Battery Dimensions					
					Length		Width		Height	
					in	mm	in	mm	in	mm
27F	EP727FMF	840	140	1010	12 5/8	321	6 3/4	171	9	229
4D	EP904D	1050	290	1280	20 3/4	527	8 1/2	216	10 1/8	258
8D	EP908DFT	1425	440	1730	20 3/4	527	11	279	10	254
4DLT	EP94DLT	850	240	1005	20	508	8 1/2	206	8 1/8	206
30H	EP930H	650	150	800	13	330	6 3/4	171	9 1/2	241
31	EP1231MF	1000	185	1190	13	330	6 3/4	171	9 1/2	241
31P	EP1231PMF	1000	185	95	13	330	6 3/4	171	9 1/2	241
17TF	EP917TF	530	140	630	17	432	6 7/8	175	8	203

**MAXIMUM RELIABILITY**

Contact your local parts manager or counter-person for details.

**ALL MAKES.**

## GROUND ENGAGING TOOLS SPECIAL

### Excavator Will-Fit Lip Assemblies (24" to 80"):

- Equipped with ESCO®'s Ultralok® tooth system
- Rectangular lips can be trimmed to fit most buckets
- Made of premium A514 steel
- Corner adapters tacked in place to allow for easy adjustment to a specific bucket
- Save up to **40%**

### FREE Adapters:

- Purchase TWO (2) or more sets of ESCO® Ultralok® teeth
- Receive a **FREE** set of ESCO® Ultralok® adapters of the same size

**SAVE UP TO 40%!**

*MENTION PROMO CODE 0066*

**FREE ADAPTERS!**

*MENTION PROMO CODE 0067*

**MAXIMUM PENETRATION**

Contact your local PSR, parts manager or parts counter-person for details.



**THOUSANDS IN STOCK.**



**MAXIMUM CUTTING**

# FORESTRY SAW TEETH

“

**While maintaining the highest standards for cutting tools in the industry, QUADCO's saw teeth are suited for all applications, even in the toughest conditions.**

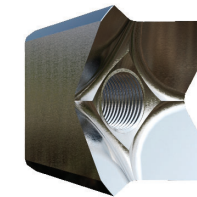
**From design to testing, we've proven the most efficient cut is through a single set of tips with the proper amount of relief angle. Anything more, is simply dragging the saw disc down.”**

*-www.quadco.com*



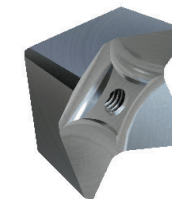
## **NO SHANK BEAVER**

*Example PN  
Q10233T*



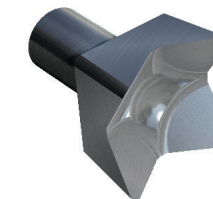
## **TWO-PIECE BEAVER**

*Example PN  
QK10031T*



## **ONE-PIECE BEAVER**

*Example PN  
QK10024T*



*Contact your local PSR, parts manager or parts counter-person for details.*



# WINTER TRACKTION.

**MAXIMUM GRIP**

## RUBBER SNOW TRACKS



### X-TRACKION

*TOUGH TRACKS DESIGNED FOR EXTREME APPLICATIONS.*  
The X-Trackion track is a premium, heavy duty track for extreme applications requiring a beefier center section to protect the center guide. This robust track is also great for running dozer blades and the directional tread will push dirt and snow for sure. The shape of the tread bars taper and groove down and are angled to hold traction on hillsides or in slippery (snow/ice) applications but will disrupt the path under it.



### Z-TRACK

*A MULTI-DIRECTIONAL TREAD GIVING TRACTION GOING BOTH WAYS.*  
The Z-tread is designed for excellent traction but also distributes machine weight well across all the treads evenly allowing it to shine in general landscaping and snow applications. When you think of traction, think Z-Track.

*Designed for loose underfoot conditions.*



**Industry Best Warranty.**

Contact your local PSR, parts manager or parts counter-person for details.



**MAXIMUM EFFICIENCY**

# COMPLETE FUEL TREATMENT

## BENEFITS OF ENERTECH LABS® COMPLETE FUEL TREATMENT™ :

- Reduces EGR system clogging
- Reduces active regeneration (DPF)
- Chemically removes water
- Boosts cetane 4 to 6 points
- Lowers gelling of fuel (-35 to -40F)
- Improves lubricity
- Inhibits corrosion
- Cleans fuel injectors and pumps
- Improves power
- Helps reduce rough running engines
- Prevents icing and stabilizes fuel

Product	Part Number	Container Size	Case Qty.	Treats (Gal)	Our Price (Ea.)
CFT Complete Fuel Treatment 12 oz.	10703	12 oz	24	40	\$ 5.56
CFT 12 oz. (Concentrate)	10704	12 oz	24	100	\$ 6.30
CFT 32 oz.	10705	32 oz	12	250	\$ 13.79
CFT 1 Gallon	10706	1 gal	4	1,000	\$ 52.75
CFT 2.5 Gallon	10706A	2.5 gal	2	2,500	\$ 122.78
CFT 5 Gallon	10707	5 gal	1	5,000	\$ 224.11
CFT 55 Gallon	10709	55 gal	1	55,000	\$ 2,315.01

*Pricing subject to change without notice.*

**Order (any parts) from our website and save an additional 3%!**



*Prices subject to change at any time without notice.*



# BROOM WAFERS

**PURCHASE YOUR BROOM WAFERS FROM ANDERSON EQUIPMENT AND SAVE BIG WITH OUR MULTI-LEVEL DISCOUNT SPECIAL!**


- Buy **THREE (3)** or more sets at one time and receive a **5% discount**.
- Buy a “skid” (240 wafers) at one time and receive a **10% discount**.
- Buy multiple skids at one time and receive up to a **15% discount**.

**SAVE UP TO 15%!**

*MENTION PROMO CODE 0068*

**MAXIMUM CLEAN-UP**

*Contact your local PSR, parts manager or parts counter-person for details.*

 18 Locations • 6 States • 800.414.4554 • [andersonequip.com](http://andersonequip.com)

**MANY MAKES.**

## PREVENTIVE MAINTENANCE AGREEMENTS

**AN ANDERSON EQUIPMENT PM AGREEMENT IS THE BEST WAY TO ASSURE YOUR MAINTENANCE NEEDS ARE BEING FULLY ADDRESSED.**

**Benefits include:**

- Factory trained technician performed
- Parts and labor price "lock" for entire length of agreement
- Can be purchased at any time
- Oil sampling at each interval
- Proper disposal of waste oil and filters
- Permanent record keeping
- 50 point inspection at each service interval
- Prepay agreement total and receive a **5%** discount

**SAVE 5%!**



**MAXIMUM LONGEVITY**

Contact your local PSR, service manager or salesman for details.

1. Access our website at [www.andersonequip.com](http://www.andersonequip.com).
2. Click “Login” at the top of the screen.
3. Click “Create New Account” on the right.
4. Fill the required info fields and click “Save Changes”.
5. Hover over “Parts” (along the top ribbon) and select the drop down option “Buy Parts Online”.
6. Enter one or multiple part numbers and click “Search”, then click “Add to Cart”.

## FEATURES & BENEFITS

- You can enter multiple part numbers at once, copy and paste them from a spread sheet or paste them from Komatsu CSS into the box above the word “search”.
- The system will automatically lookup supersedures if you enter an old part number.
- The system will show you alternative parts, used parts and reman where available.
- The system will display availability for all parts so you can gauge how quickly you can get them.
- The system will find parts even if there are punctuation discrepancies with leading zeros, dashes, etc.
- If you are disconnected while creating an order, the system will remember what you had and everything will be there when you return to the site.
- If you are logged into your Anderson account when working on your order, the site will remember your order even if you subsequently access your account from a different computer.
- Your historical Ship-To addresses will be available on the Ship-To page so you can populate the Ship-To information with a single click.
- Under the “Parts” menu at the top of the web page, you will find a link to Customer Parts Order Inquiry which will show you the real time status of all of your parts orders including orders which were not entered through the Website.
- Under Parts/Customer Equipment or Service/Customer Equipment (which are two paths to the same page), you can see all of your equipment. Clicking on an Equipment line will take you to a page where you can find additional information about the machine including historical parts orders and work orders.
- You can re-order parts from prior parts orders or work orders.

**Buy Parts Online - Shop for Parts** Home Buy Parts Online Login Contact Us Careers Site Map Google

HOME EQUIPMENT PARTS SERVICE NEWS CREDIT/FINANCING ABOUT US CALL US TODAY AT 1-800-414-4554

Search for Parts → Shopping Cart(0) → Shipping Info → Billing Info → Order Confirmation  
\* Note: Please use these Navigation buttons instead of your back button to jump between elements of your order.

Search a single P/N: Qty: 1 SEARCH ... or ... **Cart Empty**  
Enter Part Numbers: (one Part Number per line) - View Advanced Search Instructions  
Separate P/N from Qty using an asterisk. (ie "P/N"Qty" or "Qty"P/N") or type P/Ns without Quantities for Qty=1.  
If you don't see your cart items and you have an account, try logging in. [VIEW CART](#)

SEARCH Optional Filter by Manufacturer: --All Manufacturers-- **Komatsu E-Parts Central**  
Note: The Manufacturer filter is generally not necessary. Use it if you are getting too many false matches.

We have found the following based on your Search and suggested quantities. Please review and adjust quantities and then click "Add to Cart". You can further edit quantities of items in your cart before finalizing your order. [ADD TO CART](#)

Tue 03/05/2019 14:17:08

ROPLDG-X	exact match	HYD ADAPTERS	RHINO MIXED ORANGE PLUG KIT	648.62 X	1	0
Available: BRIDGEVILLE (MAIN PARTS WAREHOUSE)						

[CLICK HERE TO SHOW YOUR PRIOR INQUIRIES](#)

Anderson Equipment Company was founded in 1935 by H.W. Anderson and his partner C.K. Burson. Used and rebuilt construction equipment comprised a large part of the firm's inventory in the late 1930's and new construction and mining equipment lines were steadily added over the years. Since its inception, the company has continuously broadened its sales and service territories in Western Pennsylvania. In 1979, Anderson expanded into West Virginia and has become the market leader in rotary drills. By offering customers outstanding equipment and superior product support, Anderson is now a key supplier to the largest mining operations in the state.

In 1996, Anderson acquired Rupp Rental and Sales in upstate New York. This strategic acquisition brought the capabilities of two family-owned companies together to offer increased products and services. The ownership of a rental company has enabled Anderson to become more aggressive in the rental market in Pennsylvania and West Virginia while expanding its sales expertise north into New York.

Anderson's third generation of family ownership demonstrated their commitment to growing the company via their acquisition of R.C.Hazelton of New Hampshire, Vermont and Maine in November 2009 followed by their acquisition of The Oliver Stores of Maine and New Hampshire in December 2012.

Anderson continues to refine its product lines and services to better serve our customers. The Hazelton and Oliver Stores acquisitions bring unmatched forestry expertise to Anderson's existing portfolio of construction, mining and road building knowledge. We have established a reputation for developing innovative solutions to specialized job site applications.

- New and used equipment sales
- Rent to rent
- Rent to buy
- Equipment leasing
- OEM Parts
- Authorized OEM

With 18 full service locations across Pennsylvania, New York, West Virginia, Maine, New Hampshire and Vermont, our infrastructure affords us the ability to seamlessly fulfill our customers' needs from Kentucky to Canada. Although Anderson Equipment Company has changed dramatically over the years, one characteristic has remained the same - its reputation for **Quality: people, products and services.**

# QUALITY PEOPLE. QUALITY PRODUCTS. QUALITY SERVICE.



Scan the QR code with your smart phone to visit our website

**Bridgeville, PA**

1000 Washington Pike  
Bridgeville, PA 15017  
P. 412.343.2300  
F. 412.504.4250

**Clearfield, PA**

7550 Clearfield  
Curwensville Hwy  
Clearfield, PA 16830  
P. 814.765.5311  
F. 814.765.6820

**Shipperville, PA**

20561 Paint Blvd.  
Shipperville, PA 16254  
P. 814.226.4100  
F. 814.226.5821

**Somerset, PA**

436 Riggs Rd.  
Somerset, PA 15501  
P. 814.443.2867  
F. 814.443.4592

**Charleston, WV**

1 Andy's Way  
Charleston, WV  
25309-8102  
P. 304.756.2800  
F. 304.756.2799

**Fairmont, WV**

2007 Fuskin Dr.  
Pleasant Valley, WV  
26554  
P. 304.366.3075  
F. 304.366.7214

**Buffalo, NY**

2140 Military Road  
Tonawanda, NY 14150  
P. 716.87.7192  
F. 716.87.7151

**Rochester, NY**

115 Middle Road  
Henrietta, NY 14467  
P. 585.334.6770  
F. 585.334.9416

**Syracuse, NY**

6317 Thompson Rd.  
Syracuse, NY 13206  
P. 315.463.8673  
F. 585.334.9416

**Albany, NY**

912 Albany Shaker  
Road  
Latham, NY 12110  
P. 518.785.4500  
F. 518.783.1773

**Watertown, NY**

22607 Murrock Circle  
Watertown, NY 13601  
P. 315.788.5512  
F. 315.785.8326



**Endicott, NY**

720 E. Franklin St.  
Endicott, NY 13760  
P. 607.748.3400  
F. 607.748.5564

**Olean, NY**

4176 Route 417  
Allegany, NY 14706  
P. 716.372.8822  
F. 716.372.7198

**Gorham, ME**

18 Gorham Industrial  
Parkway  
Gorham, ME 04038  
P. 207.591.5482  
F. 207.591.5515

**Bangor, ME**

142 Target Industrial  
Circle  
Bangor, ME 04401  
P. 207.942.0177  
F. 207.942.1371

**Manchester, NH**

1645 Candia Rd.  
Manchester, NH 03109  
P. 603.627.7696  
F. 603.627.5731

**Lancaster, NH**

565 Main Street  
Lancaster, NH 03584  
P. 603.788.5591  
F. 603.788.2208

**East Montpelier, VT**

151 Packard Rd.  
East Montpelier, VT  
05651  
P. 802.223.9689  
F. 802.223.1418



Prices and promotions mentioned within are subject to change or cancellation at any time, without notice.