

CELEBRATING  
**85**  
YEARS

**PRODUCT SUPPORT**  
*Summer '20*





# STAY SAFE. STAY PRODUCTIVE.

WITH **Anderson Equipment.**

## WALKAROUND INSPECTION

### 85 POINT INSPECTION INCLUDES:

- Numerically rated (1-5) condition assessment of 85 machine components.
- **HUGE** focus on safety critical items.
- Full report with a prioritized (“Must”, “Should” or “Could” fix) list of necessary and suggested repairs.
- **FREE** of charge with every Anderson Equipment shop or field billable work order.


**FREE!**

*WITH ANY SHOP OR FIELD CALL*

[Click Here to Schedule Service](#)

**MAXIMUM SAFETY**

*Call your local service manager today to schedule PM service, diagnostic request or any other need you may have!*

 18 Locations • 6 States • 800.414.4554 • [andersonequip.com](http://andersonequip.com)

# RUN RIGHT, ALL SEASON.

## HYDRAULIC TUNE-UP SPECIAL

### Applicable machines (Anderson-supported):

- Wheel loaders
- Hydraulic excavators
- Bulldozers
- Material handlers
- 1-50 ton class

### Inspection includes:

- Full "PM Clinic" to determine health / performance
- DPF / SCR system inspection (where applicable)
- Oil sampling (engine, transmission, final drives, swing) + **hydraulic particle count**
- **FREE**, comprehensive, 85 point inspection
- **FREE** Energy Savings Operation Report (applicable Komatsu machines only)


**\$750 SHOP**  
**\$950 FIELD**  
*MENTION PROMO CODE 0055*

**10% LABOR DISCOUNT**  
*OFF SUGGESTED REPAIRS\**

[Click Here to Schedule Service](#)

Promotion runs 3/15/2020 - 8/31/2020. Contact your local service manager for details.  
Subject to change or cancellation at any time, without notice.  
\*Excludes major component repairs or replacement (e.g. engines, transmissions, etc.).

**MAXIMUM PERFORMANCE**

 18 Locations • 6 States • 800.414.4554 • [andersonequip.com](http://andersonequip.com)

**ALL MAKES.**

# AIR CONDITIONING INSPECTION

**Inspection includes:**

- Check system charge pressures
- Check metal & flexible lines for wear/leaks
- Check compressor for leakage at shaft area
- Check & clean condenser coil
- Check & clean cabin air filters (replace if needed for additional charge)
- 1 hour and 60 miles of travel
- **FREE** multi-point inspection (with report)

**\$300 SHOP**

*MENTION PROMO CODE 0052*

**\$500 FIELD**

*MENTION PROMO CODE 0052*

[Click Here to Schedule Service](#)

**MAXIMUM COMFORT**

Promotion runs 3/15/2020 - 8/31/2020. See your local service manager for more details. Subject to change or cancellation at any time, without notice.

**ALL MAKES.**

# HYDRAULIC CYLINDER RESEALS

**LEAKING HYDRAULIC CYLINDERS CAN INTRODUCE DIRT AND OTHER CONTAMINANTS INTO YOUR MACHINE'S HYDRAULIC SYSTEM, PUTTING IT AT RISK! PROTECT YOUR INVESTMENT BY HAVING OUR TEAM REPAIR TODAY!**

Bring **TWO (2)** or more hydraulic cylinders to our shop for resealing and receive a **15% labor discount!**

**We will:**

- Disassemble
- Clean
- Inspect
- Advise of any issues (providing an estimate)
- Reseal
- Reassemble

**SAVE 15%!**

MENTION PROMO CODE 0059

[Click Here to Schedule Service](#)

**MAXIMUM PROTECTION**

*Promotion runs 3/15/2020 thru 8/31/2020. Cylinders must be brought in at the same time to receive labor discount. Subject to change or cancellation at any time.*

**ALL MAKES.**



## HYDRAULIC HOSE SPECIAL

**BRING TWO (2) OR MORE HYDRAULIC HOSES IN FOR FABRICATION AND RECEIVE A 10% DISCOUNT!**

Upon visually inspecting your machine during daily start-up/shut-down, pay close attention to chaffed, bubbling or dry-rotted hoses and take advantage of our hydraulic hose special to repair **BEFORE FAILURE!**


**DID YOU KNOW** that we use Gates® MEGACLEAN™ foam projectiles on every custom hose we build? These projectiles are 20-30% larger than the hose ID, which thoroughly cleans the hose from inside out, leaving nothing behind that could potentially contaminate your hydraulic system.

**SAVE 10%!**

**Click Here to Contact Us**

**MAXIMUM CONFIDENCE**

*Promotion runs 3/15/2020 - 8/31/2020. Contact your local parts manager or parts counter-person for details.*

 18 Locations • 6 States • 800.414.4554 • andersonequip.com

**ALL MAKES.**

**G.E.T. TEETH**

**Excavator Will-Fit Lip Assemblies (24" to 80"):**

- Equipped with ESCO®'s Ultralok® tooth system
- Rectangular lips can be trimmed to fit most buckets
- Made of premium A514 steel
- Corner adapters tacked in place to allow for easy adjustment to a specific bucket
- Save up to **40%**

**FREE Adapters:**

- Purchase TWO (2) or more sets of ESCO® Ultralok® teeth
- Receive a **FREE** set of ESCO® Ultralok® adapters of the same size\*

**SAVE UP TO 40%!**

*MENTION PROMO CODE 0066*

**FREE ADAPTERS!**

*MENTION PROMO CODE 0067*

**Click Here to Contact Us**

**MAXIMUM PENETRATION**

*\*Available for competitor conversions only.*

**ALL MAKES.**

**G.E.T. BLADES**

**ESCO® edges and end bits are precision punched for easy installation and are available in ForgeTemp® and MaxTemp® Steel. ForgeTemp steel is intended for high abrasion, low impact conditions. MaxTemp steel is heat treated, through-hardened steel that delivers maximum protection against breakage in high impact applications.**


ESCO® edges and bits provide:

- Better penetration which reduces fuel consumption
- Self-sharpening for maximum penetration
- Longer wear life which increases machine availability
- All MaxTemp blades are guaranteed against impact breakage
- Offerings include OEM standard, heavy duty, and extra heavy duty

**D O Z E R S  
L O A D E R S  
G R A D E R S  
E X C A V A T O R S  
S C R A P E R S  
AND MORE!**

**MAXIMUM WEAR**

*Contact your local parts counter-person for details.*

 18 Locations • 6 States • 800.414.4554 • [andersonequip.com](http://andersonequip.com)



**ALL MAKES.**



**MAXIMUM GRIP**

# RUBBER TRACKS

## Why Ktsu® ?

- **Competitive pricing**
- **Largest range of CTL and mini-ex undercarriage in North America**
- **Best-in-class warranty:**
  - *Mini-excavator tracks carry an 18 month, non pro-rated warranty.*
  - *Compact track loader metal-core tracks carry a 14 month, non pro-rated warranty.*
  - *Compact track loader non-metal-core tracks carry a 12 month, pro-rated warranty.*
  - *Steel hard parts carry a 12 month or 1,200 hour (whichever comes first) warranty.*

**HUNDREDS OF  
TRACKS IN STOCK!**

**ALL MAKES &  
MODELS!**

T R A C K S

S P R O C K E T S

R O L L E R S

I D L E R S

C H A I N S



Contact your local parts manager or parts counter-person for details.

**ALL MAKES.**

## **BROOM WAFERS**

**PURCHASE YOUR BROOM WAFERS FROM ANDERSON EQUIPMENT AND SAVE BIG WITH OUR MULTI-LEVEL DISCOUNT SPECIAL!**

- Buy **THREE (3)** or more sets at one time and receive a **5%** discount.
- Buy a “skid” (240 wafers) at one time and receive a **10%** discount.
- Buy multiple skids at one time and receive up to a **15%** discount.


**SAVE UP TO 15%!**

*MENTION PROMO CODE 0068*

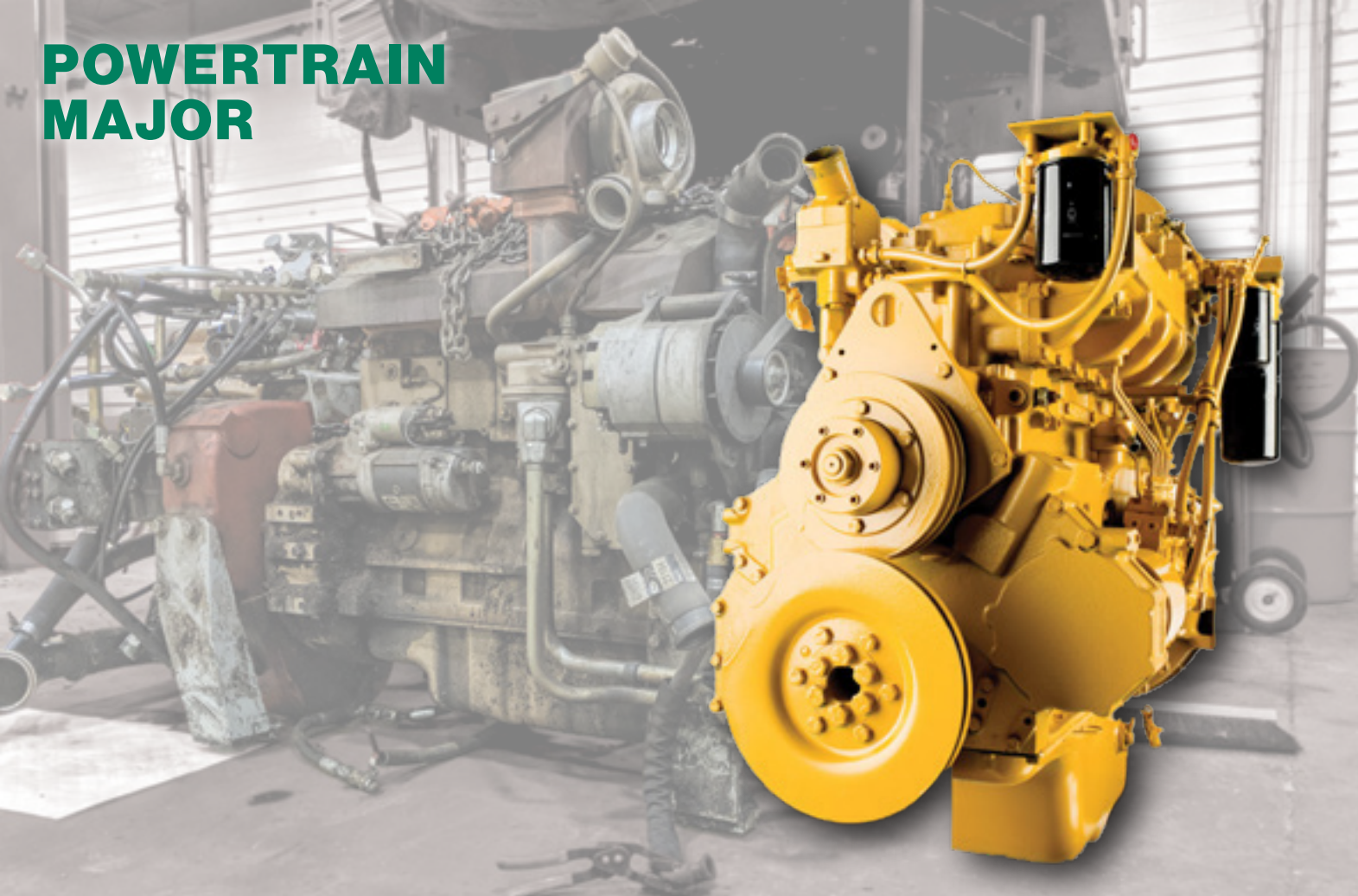
[Click Here to Contact Us](#)

**MAXIMUM CLEAN-UP**

*Contact your local PSR, parts manager or parts counter-person for details.*

 18 Locations • 6 States • 800.414.4554 • andersonequip.com

# POWERTRAIN MAJOR



# KOMATSU REPAIR & REBUILD PROGRAM

## Level 1 - Component Repair

*Includes Utility, Construction, Mining and Forestry machines*

- Anderson-performed Repair or Reman exchange ONE (1) engine, power module, transmission, torqueflow, final drive, differential, axle assembly, travel motor or main hydraulic pump.
- Up to a **10%** parts discount

## Level 2 - Machine Overhaul

*Includes Utility, Construction, Mining and Forestry machines*

- Anderson-performed Rebuild or Reman exchange TWO (2) or more engine, power module, transmission, torqueflow, final drive (set of LH+RH), differential, axle assembly, travel motor (set of LH+RH), or main hydraulic pump.
- Up to a **20%** parts discount

**SAVE UP TO 20%!**

*MENTION PROMO CODE 0039*

**4 YEAR / 10,000 HOUR  
REMAN ASSURANCE**

**Click Here to Schedule Service**

Contact your local parts or service manager for details. Subject to change or cancellation at any time, without notice. Exclusions apply. Available at our Komatsu supporting locations only.

**MAXIMUM UP-TIME**



# KOMATSU PARTS & SERVICE FINANCING

# REPAIR NOW. PAY LATER.

### PROGRAM DETAILS:

- 0% interest for 15 months, up to \$100,000.
- Finance \$100,000 to \$150,000 at 1.74% for up to 21 months.
- Finance up to \$300,000 for 2.74% up to 27 months.
- 3 payment skips available per 12-month period.
- Finance your Komatsu parts-only purchase, or both Komatsu parts and the labor performed by Anderson Equipment.
- Terms and conditions apply. Subject to credit review.
- Minimum amount to be financed is \$7,500, unless otherwise restricted by state or local law.

**0% FOR 15 MONTHS**

**3 SKIP PAYMENTS**

**Click Here to Contact Us**

**MAXIMUM CONVENIENCE**

*Contact your local parts or service manager for details. Subject to change or cancellation at any time, without notice. Exclusions apply. Available at our Komatsu supporting locations only.*

# PREVENTIVE MAINTENANCE AGREEMENTS

**AN ANDERSON EQUIPMENT PM AGREEMENT IS THE BEST WAY TO ASSURE YOUR MAINTENANCE NEEDS ARE BEING FULLY ADDRESSED.**

**Benefits include:**

- Factory trained technician performed
- Parts and labor price "lock" for entire length of agreement
- Can be purchased at any time
- Oil sampling at each interval
- Proper disposal of waste oil and filters
- Permanent record keeping
- Multi-point inspection at each service interval
- Prepay agreement total and receive a **5%** discount

**SAVE 5%!**

[Click Here for More Info](#)



Contact your local service manager for details.

**MAXIMUM LONGEVITY**

1. Click [HERE](#) to access online ordering.
2. Click “Login” at the top of the screen.
3. Click “Create New Account” on the right.
4. Fill the required info fields and click “Save Changes”.
5. Hover over “Parts” (along the top ribbon) and select the drop down option “Buy Parts Online”.
6. Enter one or multiple part numbers and click “Search”, then click “Add to Cart”.

## FEATURES & BENEFITS

- You can enter multiple part numbers at once, copy and paste them from a spread sheet or paste them from Komatsu CSS into the box above the word “search”.
- The system will automatically lookup supersedures if you enter an old part number.
- The system will show you alternative parts, used parts and reman where available.
- The system will display availability for all parts so you can gauge how quickly you can get them.
- The system will find parts even if there are punctuation discrepancies with leading zeros, dashes, etc.
- If you are disconnected while creating an order, the system will remember what you had and everything will be there when you return to the site.
- If you are logged into your Anderson account when working on your order, the site will remember your order even if you subsequently access your account from a different computer.
- Your historical Ship-To addresses will be available on the Ship-To page so you can populate the Ship-To information with a single click.
- Under the “Parts” menu at the top of the web page, you will find a link to Customer Parts Order Inquiry which will show you the real time status of all of your parts orders including orders which were not entered through the Website.
- Under Parts/Customer Equipment or Service/Customer Equipment (which are two paths to the same page), you can see all of your equipment. Clicking on an Equipment line will take you to a page where you can find additional information about the machine including historical parts orders and work orders.
- You can re-order parts from prior parts orders or work orders.

Buy Parts Online | Shop for Parts | Home | Buy Parts Online | Login | Contact Us | Cart | My Profile | Logout

HOME | EQUIPMENT | PARTS | SERVICE | NEWS | CREDIT FINANCING | ABOUT US | CALL US TODAY AT 1-800-414-4554

Search for Parts | Shipping/Cards | Shipping Info | Shipping Info | Order Confirmation

\* Note: Please use these navigation buttons instead of your back button to navigate between elements of our order.

Search a single PIN: Qty: 1 [SEARCH] or [Cart Empty]

Enter Part Numbers (one Part Number per line) | View Advanced Search Instructions

Optional Filter by Manufacturer: All Manufacturers

Note: The Manufacturer filter is generally not necessary. Use it if you are getting too many results.

We have found the following based on your Search and suggested quantities. Please review and adjust quantities and then click "Add to Cart". You can further edit quantities of items in your cart before finalizing your order.

Thu: 03/05/2015 10:17:00

DESCRIPTION	QTY	UNIT PRICE	TOTAL
HYD ADAPTERS	1		
BAND MIXED ORANGE PLUG KIT	1		
			\$44.42

Available BRIDGEVILLE (BAIN-BRIT) WAREHOUSE

CLICK HERE TO SHOW YOUR PRIOR INQUIRIES

Anderson Equipment Company was founded in 1935 by H.W. Anderson and his partner C.K. Burson. Used and rebuilt construction equipment comprised a large part of the firm's inventory in the late 1930's and new construction and mining equipment lines were steadily added over the years. Since its inception, the company has continuously broadened its sales and service territories in Western Pennsylvania. In 1979, Anderson expanded into West Virginia and has become the market leader in rotary drills. By offering customers outstanding equipment and superior product support, Anderson is now a key supplier to the largest mining operations in the state.

In 1996, Anderson acquired Rupp Rental and Sales in upstate New York. This strategic acquisition brought the capabilities of two family-owned companies together to offer increased products and services. The ownership of a rental company has enabled Anderson to become more aggressive in the rental market in Pennsylvania and West Virginia while expanding its sales expertise north into New York.

Anderson's third generation of family ownership demonstrated their commitment to growing the company via their acquisition of R.C.Hazelton of New Hampshire, Vermont and Maine in November 2009 followed by their acquisition of The Oliver Stores of Maine and New Hampshire in December 2012.

Anderson continues to refine its product lines and services to better serve our customers. The Hazelton and Oliver Stores acquisitions bring unmatched forestry expertise to Anderson's existing portfolio of construction, mining and road building knowledge. We have established a reputation for developing innovative solutions to specialized job site applications.

- New and used equipment sales
- Rent to rent
- Rent to buy
- Equipment leasing
- OEM Parts
- Authorized OEM

With 18 full service locations across Pennsylvania, New York, West Virginia, Maine, New Hampshire and Vermont, our infrastructure affords us the ability to seamlessly fulfill our customers' needs from Kentucky to Canada. Although Anderson Equipment Company has changed dramatically over the years, one characteristic has remained the same - its reputation for **Quality: people, products and services.**

# QUALITY PEOPLE. QUALITY PRODUCTS. QUALITY SERVICE.



Click the QR code with your smart phone to visit our website

**Bridgeville, PA**  
1000 Washington Pike  
Bridgeville, PA 15017  
P. 412.343.2300  
F. 412.504.4250

**Clearfield, PA**  
7550 Clearfield  
Curwensville Hwy  
Clearfield, PA 16830  
P. 814.765.5311  
F. 814.765.6820

**Shippenville, PA**  
20561 Paint Blvd.  
Shippenville, PA 16254  
P. 814.226.4100  
F. 814.226.5821

**Somerset, PA**  
436 Riggs Rd.  
Somerset, PA 15501  
P. 814.443.2867  
F. 814.443.4592

**Charleston, WV**  
1 Andy's Way  
Charleston, WV  
25309-8102  
P. 304.756.2800  
F. 304.756.2799

**Fairmont, WV**  
2007 Ruskin Dr.  
Pleasant Valley, WV  
26554  
P. 304.366.3075  
F. 304.366.7214

**Buffalo, NY**  
2140 Military Road  
Tonawanda, NY 14150  
P. 716.87.71992  
F. 716.87.71581

**Rochester, NY**  
115 Middle Road  
Henrietta, NY 14467  
P. 585.334.6770  
F. 585.334.9416

**Syracuse, NY**  
6317 Thompson Rd.  
Syracuse, NY 13206  
P. 315.463.8673  
F. 585.334.9416

**Albany, NY**  
912 Albany Shaker  
Road  
Latham, NY 12110  
P. 518.785.4500  
F. 518.783.1773

**Watertown, NY**  
22607 Murrok Circle  
Watertown, NY 13601  
P. 315.788.5512  
F. 315.785.8326

**Anderson**  
EQUIPMENT COMPANY  
Your COMPLETE Equipment Solution  
1.800.414.4554 | andersonequip.com

**SINCE 1935**

**Endicott, NY**  
720 E. Franklin St.  
Endicott, NY 13760  
P. 607.748.3400  
F. 607.748.5564

**Olean, NY**  
4176 Route 417  
Allegany, NY 14706  
P. 716.372.8822  
F. 716.372.7198

**Gorham, ME**  
18 Gorham Industrial  
Parkway  
Gorham, ME 04038  
P. 207.591.5482  
F. 207.591.5515

**Bangor, ME**  
142 Target Industrial  
Circle  
Bangor, ME 04401  
P. 207.942.0177  
F. 207.942.1371

**Manchester, NH**  
1645 Candia Rd.  
Manchester, NH 03109  
P. 603.627.7696  
F. 603.627.5731

**Lancaster, NH**  
565 Main Street  
Lancaster, NH 03584  
P. 603.788.5591  
F. 603.788.2208

**East Montpelier, VT**  
151 Packard Rd.  
East Montpelier, VT  
05651  
P. 802.223.9689  
F. 802.223.1418

Prices and promotions mentioned within are subject to change or cancellation at any time, without notice.